

OHLDE CATTLE CO.



Basic **BLACKS**

**BULL &
FEMALE
SALE**

APRIL 17, 2023

PALMER, KS

The No. 1 Source for Easy Fleshing, Maternally Efficient Angus Cattle

Welcome to Ohlde Cattle Company's 33rd Annual Basic Blacks Bull and Female Sale. The sale will be at the Ranch near Palmer, Kansas, for those wanting to attend in person. There will also be the options of online bidding through Superior Productions and *Liveauctions.tv*. Phone bidding is also available through Superior. Registering to bid well in advance of the sale would be very helpful as the sale is on a Monday. This will help things run more smoothly.

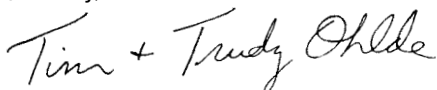
We continue to genetically engineer cattle that thrive on grass and not just survive regardless of what Mother Nature brings us for moisture and growing conditions. Our cattle are made to perform under all types of environments. The focus here at OCC has remained the same for nearly 40 years — to produce the type of cattle that increase profit. The Basic Blacks program began with the commitment to producing low birthweight, strong maternal, cost efficient performance cattle that are thick, easy fleshing, good uddered and require minimum maintenance while working in a forage-based environment. Predictability comes with consistent breeding of the same type and kind rather than the fire and ice approach. At OCC, balance multiple trait selection has always been the cornerstone of our breeding program.

We still believe that cattle breeding is an art. There remain essential cow herd traits that are not addressed directly or accurately by performance testing and EPDs. We think a common goal should be to fine-tune EPDs that can more accurately predict the expression of maternal traits in a forage based, often low-input environment. We believe that much work remains to achieve such a goal however and are concerned that the direction of current EPD research is pulling us away from that. In short, a computer will never be able to replace the eye. Environments are quite different in many cases and selecting cattle that fit your environment more often than not is best determined by observation of your cattle in your environment. Keep in mind that Maximum is seldom optimum.

We continue our steadfast commitment to producing those easy fleshing, low-input, uniform, versatile cattle that will work for you, the cowman. We think \$EN, \$W and BW are the most important EPDs for low-input commercial ranchers. Net profit is still the bottom line. The bulls and females in this offering will transmit these attributes to their progeny. If the commercial cowman does not have females that can make them a profit, there isn't a beef industry. Our business is to keep you in business!

If we can assist you in any way, please give us a call. Cattle are available for viewing anytime between now and sale time.

Sincerely,



Tim, Trudy, Jake and Jordon Ohlde

***"We must remember that cattle should thrive on grass
not just survive on grass."***

Ohlde Cattle Co. BASIC BLACKS BULL & FEMALE SALE

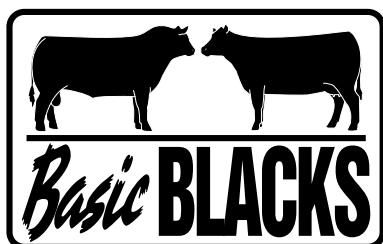
Monday, April 17, 2023 • 1 PM
at the Ranch
Palmer, Kansas

Trudy: 785-630-0522 • Tim: 785-630-0523
Jake: 785-630-0521

Selling 136 Bulls
Angus, Angus II® and Fleck-Angus
Plus 61 Registered &
Commercial Females

Need not be present to win!

Registered buyers on the Internet, as well as buyers attending sale day, are eligible to win free semen!



Ohlde Cattle Co.

1362 2nd Road • Palmer, KS 66962
Tim, Trudy, Jake & Jordon Ohlde
Tim: 785-630-0523 • Trudy: 785-630-0522
Jake: 785-630-0521
1-800-New-Bull (639-2855)
ohldecatt@bluevalley.net • OhldeCattle.com

Barney Schuh • Clyde Mattson

Basic Blacks and Angus II are trademarks of Ohlde Cattle Co.

AUCTIONEER Brian Curless, 217-242-1665

SALE REPRESENTATIVES:

Jeff Mafi, Angus Journal 816-344-4266
Stephen Russell, KLA 785-458-2650
Chris Beutler, Midwest Messenger 402-380-8244
Justin Stout, The Stock Exchange 913-645-5136
Guy Peverley, The Stock Exchange 785-456-9911 or 785-456-4390

SALE LOCATION:

At the ranch, 1362 2nd Road • Palmer, KS 66962

TRUCKING: We are available to assist with trucking arrangements and will guarantee delivery for no more than \$300 per head on purchases totaling \$10,000 or more. Purchases totaling less than \$10,000 will be delivered at the cost of trucking. Call with questions.

HEALTH: Cattle sell with the proper health papers for interstate shipment.

TERMS: All cattle sell under the standard terms and conditions recommended by the American Angus Association. All sale bulls are guaranteed free of the AM and NH genetic defects. ***OCC will retain 1/3 semen and revenue sharing interest in all registered Angus bulls unless indicated differently in the individual lots.***

INSURANCE: Livestock insurance will be available sale day.

ACCOMMODATIONS: Cedar Court Motel, 905 E Crawford St., Clay Center, 785-632-2148 — 14 miles south of the ranch
Clay Center has a paved airstrip and Manhattan (50 miles from the ranch) has a regional airport with commercial flights.

VIEWING THE AUCTION: The auction will be broadcast online at Bid.SuperiorLivestock.com and the pre-recorded videos will also be hosted there. You do not need an account just to watch the auction or view videos of the sale offering.

ONLINE BIDDING: Go to Bid.SuperiorLivestock.com for Superior's new online bidding platform.

TURN IN BIDS OVER THE PHONE: This is Superior's traditional method of buying cattle and is the suggested process for anybody who does not have consistent, high-speed internet.

FOR HELP WITH REGISTRATION OR ANY PART OF THE BIDDING PROCESS PLEASE CALL SUPERIOR AT 1-800-422-2117.





How to participate on the phone or online

VIEWING THE AUCTION: The auction will be broadcast online at Bid.SuperiorLivestock.com and the pre-recorded videos will also be hosted there. You do not need an account just to watch the auction or view videos of the sale offering.

ONLINE BIDDING: Go to Bid.SuperiorLivestock.com for Superior's new online bidding platform. If you have not registered there before you will need to create an account. The first time you register an account you will receive a confirmation e-mail that you must click on. Once you have completed this, select the auction you would like to bid on and click the "Request a Buyer Number" button. The first time you request a buyer number you will be sent a confirmation code via text. Enter that code in the login portal and you will receive a buyer number. This 2-step verification process will only have to be done once and in the future you will be able to simply login and request a buyer number and receive it instantly for any auction. Once you have successfully registered and received a buyer number it will show your name and buyer number on both the video preview page and the online bidding page when you are logged in. If you have an account at LiveAuctions.tv you may skip the registration process.

and use those login credentials to request a buyer number as LiveAuctions is a division of Superior Livestock. For more details on registering an account and also how to bid, you may watch a tutorial at Bid.SuperiorLivestock.com/how-it-works.

TURN IN BIDS OVER THE PHONE: This is Superior's traditional method of buying cattle and is the suggested process for anybody who does not have consistent, high-speed internet. You still must register an account at Bid.SuperiorLivestock.com and request a buyer number. Once you receive a buyer number you will see the bid line phone number. Just watch the auction online and call in at least 2 lots ahead of the lot you are looking to bid on. A Superior Livestock representative will be with you on the phone and will assist you in placing bids.

FOR HELP WITH REGISTRATION OR ANY PART OF THE BIDDING PROCESS PLEASE CALL SUPERIOR AT 1-800-422-2117.



OCC Rear End 751R

Calved 9-1-05

+15649977

#OCC Focus 813F

#Basin Rainmaker 654X

OCC Homer 650H

+Dixie Erica of CH 1019

+OCC Dixie Erica 816B

#DHD Traveler 6807

OCC Joker 620J

Dixie Erica of CH 1019

FCC Revolution Rose 995N

#+OCC Emblazon 854E

OCC Revolution Rose 887H

OCC Juanada 709V

Rito 9Q4 of 1H1 Sasquatch

OCC Revolution Rose 919E

CED	BW	WW	YW	DMI	Milk	MW	MH	\$EN
2	2.2	45	72	0.28	17	-43	-1.1	20

OCC Rear End is a very deep, heavy muscled bull with unbelievable style, balance, and excellent feet and legs. His sire has done it all when it comes to calving ease and maternal quality with longevity. His grand sire, OCC Joker, sires moderate-sized females with excellent fleshing ability and great udder quality. Rear End has had great acceptance in Argentina with more than 1,000 progeny.



OCC Emblazon 854E

Calved 3-19-95

#+12514348

#QAS Traveler 23-4

#Band 234 of Ideal 3163

DHD Traveler 6807

QAS Blackbird Eve 601 1

#Bemindful Maid DHD 0807

#PBC 707 1M F0203

#PBC 707 1M F0203

Bemindful Maid of R R 1079

Dixie Erica of C H 1019

#R R Rito 707

Dixie Erica of C H 615

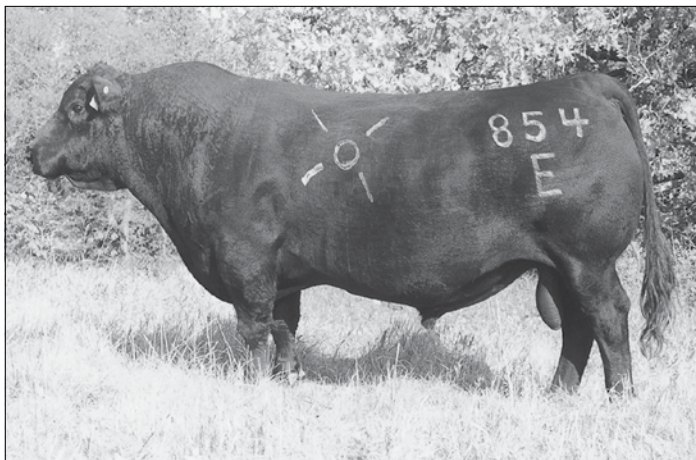
Evocate Princess T

Schebrook Emulous 11N7

R R Dixie Erica of C H 447

CED	BW	WW	YW	DMI	Milk	MW	MH	\$EN
12	0.3	44	69	0.38	17	4	-0.7	13

His progeny have demonstrated to us that Emblazon is a worthy replacement for 6807 in our program. Emblazon has established an impressive set of low birth, superior growth EPDs, similar to those of his sire. Emblazon daughters are proving to be sound, easy fleshing females with beautiful udders.



OCC Homer 650H

Calved 2-16-98

13235197

#Basin Rainmaker 654X

#Basin Rainmaker D S 380U

OCC Focus 813F

Basin Bardolene 423U

Dixie Erica of C H 1019

#PBC 707 1M F0203

#DHD Traveler 6807

Dixie Erica of C H 615

OCC Dixie Erica 816B

#QAS Traveler 23-4

Dixie Erica of C H 1019

#Bemindful Maid DHD 0807

#PBC 707 1M F0203

Dixie Erica of C H 615

CED	BW	WW	YW	DMI	Milk	MW	MH	\$EN
19	-3.8	23	42	-0.4	18	-45	-1.3	19

A son of OCC Focus 813F, Homer is double bred to the Dixie Erica of C H 1019 cow that has produced so many herd sires for us. Homer's dam, OCC Dixie Erica 816B, is a beautiful 6807 daughter that we consider to be an ideal Angus cow. Well known for his calving ease and calf vigor for many years.





OCC Eureka 865E

Calved 3-22-95

12514352

#DHD Traveler 6807

#QAS Traveler 23-4

OCC Backstop 888B

Revolution Rose of R R 9239

#Bemindful Maid DHD 0807

#PBC 707 1M F0203

Revolution Rose of R R 4064

#PBC 707 1M F0203

#R R Rito 707

Blackbird of R R 1204

Blackbird of R R 7023

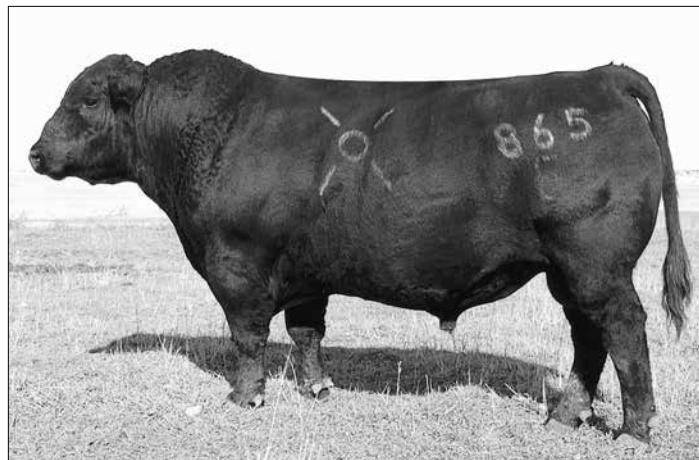
Evocate Princess T

Emulation N Bar 4073

Blackbird of R R 5093

CED	BW	WW	YW	DMI	Milk	MW	MH	\$EN
5	1.6	38	55	-0.32	24	-4	-0.6	11

Eureka combines incredible thickness and fleshing ability with an attractive phenotype. His daughters are moderate sized, low maintenance females with excellent udder quality. His dam was one of our most productive foundation cows.



OCC Epitome 630E

Calved 3-11-17

19391475

OCC Focus 813F

Basin Rainmaker 654X

OCC Paxton 730P

OCC Blackbird 736K

Dixie Erica of C H 1019

OCC Great Plains 943G

OCC Blackbird 824G

OCC Rear End 751R

OCC Homer 650H

OCC Dixie Erica 730W

OCC Dixie Erica 776M

FCC Revolution Rose 995N

OCC Eureka 865E

OCC Dixie Erica 606G

CED	BW	WW	YW	DMI	Milk	MW	MH	\$EN
9	.3	47	80	.75	21	-3	-.9	12

A sale topping bull that we have used on purebreds and crossbred. He sires great length and heavy muscle. His daughters are among our best 2 year olds with fabulous udders. His sons have excellent growth and scrotal along with exceptional phenotype. His dam is a fabulous Rear End donor. Excellent follow up to Paxton.



OCC Zodiac 655Z

Calved 9-16-02

#17715632

#OCC Paxton 730P

#DHD Traveler 6807

OCC Umax 820U

OCC Dixie Erica 801M

Dixie Erica of CH 1019

#Basin Rainmaker 654X

OCC Juanada 709V

OCC Practical 841P

+OCC Exodus 712E

OCC Dixie Erica 628W

Chloe Dixie Erica 7313

OCC Dixie Erica 971E

#DHD Traveler 6807

Dixie Erica of CH 1019

CED	BW	WW	YW	DMI	Milk	MW	MH	\$EN
9	-.9	32	55	.29	14	-20	-1.2	19

A sire that has caught the attention of nearly everyone that has stopped by. He has been used heavily in our program through both natural and AI service. They are very consistent in performance, muscling and fleshing ability. His dam has extreme fleshing ability and a perfect udder. Beautiful females. Top 2% \$EN



OCC Paxton 730P

Calved 3-14-04

14940735

#Basin Rainmaker 654X

#Basin Rainmaker DS 380U

OCC Focus 813F

Dixie Erica of CH 1019

Basin Bardolene 423U

PBC 707 1M F0203

Dixie Erica of CH 615

OCC Great Plains 943G

N Bar Emulation EXT

OCC Blackbird 736K

OCC Blackbird 824G

OCC Dixie Erica CH 1019

OCC Anchor 771A

OCC Blackbird 778A

CED	BW	WW	YW	DMI	Milk	MW	MH	\$EN
13	-1.3	41	69	0.92	16	-15	-1.4	17

A very long-bodied, big-scratled, wide-based bull that is four generations from the 6807 bloodline. Very linebred to F0203. Will make an excellent cross and complement intensely bred 6807 cattle and still be able to maintain the thickness and phenotype. BW 75 lbs. WR 106 YR 111. His Anchor granddam is also the granddam of OCC Legend 616L. Paternal brother to Homer and Hunter. His daughters are phenomenal and his genetic influence has topped many sales in the last few years!





OCC Dakota 687D

Calved 3-22-16

+ 19067883

OCC Umax 820U
O C C Zodiac 655Z
 OCC Dixie Erica 628W

OCC Paxton 730P
OCC Dixie Erica 839A
 OCC Dixie Erica 637S

OCC Paxton 730P
 OCC Dixie Erica 801M
 OCC Practical 841P
 Chloe Dixie Erica 7313
 OCC Focus 813F
 OCC Blackbird 736K
 OCC Missing Link 830M
 OCC Dixie Erica 603N5

CED	BW	WW	YW	DMI	Milk	MW	MH	\$EN
10	-.1	35	55	.25	12	-31	-1.4	21

Dakota is a long bodied, heavy muscled son of Zodiac. His mother was known as the belly dragger cow with a lot depth and volume.



OCC Accolade 825A

Calved 3-21-13

18078529

OCC Focus 813F
OCC Paxton 730P
 OCC Blackbird 736K

OCC Missing Link 830M
OCC Dixie Erica 771R
 OCC Dixie Erica 776M

Basin Rainmaker 654X
 Dixie Erica of C H 1019
 OCC Great Plains 943G
 OCC Blackbird 824G
 OCC Headliner 661H
 OCC Dixie Erica 946K
 OCC Eureka 865E
 OCC Dixie Erica 606G

CED	BW	WW	YW	DMI	Milk	MW	MH	\$EN
3	3.1	56	98	1.04	23	56	-0.1	-15

He will add a little more frame than other OCC sires and additional growth. He is a Paxton son out of Big Time's dam.



OCC Best Yet 766B

Calved 4-18-14

18413646

OCC Great Plains 943G
OCC Work of Art 766W
 OCC Dixie Erica 662J

OCC Eureka 865E
OCC Dixie Erica 817Y
 OCC Dixie Erica 612H

N Bar Emulation EXT
 Dixie Erica of C H 1019
 OCC Emblazon 854E
 OCC Dixie Erica 816B
 OCC Backstop 888B
 Blackbird of R R 1204
 D H D Traveler 6807
 OCC Dixie Erica 803F

CED	BW	WW	YW	DMI	Milk	MW	MH	\$EN
1	2.8	49	95	0.99	24	42	-0.2	-9

A big scrotaled bull, with incredible length, style and balance. He has a little more frame then some OCC bulls. Everyone that has seen him wants some semen. He has caused as much excitement as any of our bulls in recent history. Even more exciting is that he duplicates his phenotype and performance in every calf. A great future is ahead for this sire.



OCC Blueprint 632B

Calved 3-10-14

18396008

OCC Headliner 661H
OCC Moderator 825M
 OCC Dixie Erica 845K

OCC Practical 841P
OCC Dixie Erica 628W
 Chloe Dixie Erica 7313

OCC Emblazon 854E
 OCC Juanada 858F
 OCC Emblazon 854E
 OCC Dixie Erica 960H
 +OCC Exodus 712E
 OCC Dixie Erica 971E
 #DHD Traveler 6807
 Dixie Erica of CH 1019

CED	BW	WW	YW	DMI	Milk	MW	MH	\$EN
11	-1.4	28	50	0.24	22	-26	-1	15

A Moderator son that is doing a great job on heifers. He is thick, long, smooth, attractive, small headed and good-footed. He sires his identical phenotype in every calf. The first daughters now look very good. A nice replacement for Moderator. A maternal brother to OCC Zodiac 655Z.





OCC Zar 869Z

Calved 9-13-12

17995884

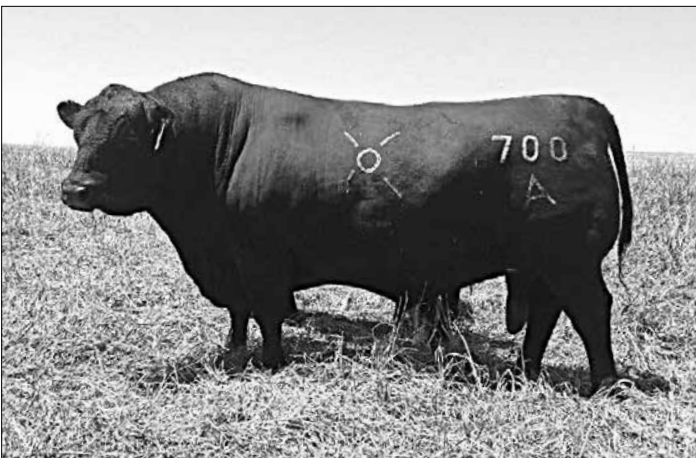
#OCC Focus 813F
OCC Homer 650H
+OCC Dixie Erica 816B

OCC Paxton 730P
OCC Dixie Erica 642U
OCC Dixie Erica 801M

#Basin Rainmaker 654X
+Dixie Erica of CH 1019
#DHD Traveler 6807
Dixie Erica of CH 1019
OCC Focus 813F
OCC Blackbird 736K
OCC Joker 620J
OCC Joker 620J5

CED	BW	WW	YW	DMI	Milk	MW	MH	SEN
16	-1.8	28	52	-0.11	16	-40	-1.2	20

A bull we have used natural service on heifers for four years. His daughters are proving his greatness as a female sire. His sons are growthy and powerful with good capacity and fleshing ability. He is proving to be a great replacement for Homer and Eureka.



OCC Alpha 700A

Calved 03-25-13

18041805

OCC NO Problems 52N
OCC X-tra Easy 708X
OCC Dixie Erica 678T

OCC Jet Stream 825J
OCC Dixie Erica 806Y
OCC Dixie Erica 607P

OCC Focus 813F
OCC Dixie Erica 816B
OCC Traveler 723Z
OCC Dixie Erica 613L
OCC Emblazon 854E
OCC Juanada 968G
OCC Headliner 661H
OCC Dixie Erica 816B

CED	BW	WW	YW	DMI	Milk	MW	MH	SEN
12	-2.1	33	63	0.17	25	7	-0.7	7

Son of X-tra Easy. A younger sire that is consistent low birth. He is a bull that will change fleshing ability, depth and muscle with an attractive phenotype. Excellent uddered cattle throughout his pedigree.



OCC Big Time 746Z

Calved 4-06-12

17696450

OCC Homer 650H
OCC Rear End 751R
FCC Revolution Rose 995N

OCC Missing Link 830M
OCC Dixie Erica 771R
OCC Dixie Erica 776M

OCC Focus 813F
OCC Dixie Erica 816B
OCC Joker 620J
OCC Revolution Rose 887H
OCC Headliner 661H
OCC Dixie Erica 946K
OCC Eureka 865E
OCC Dixie Erica 606G

CED	BW	WW	YW	DMI	Milk	MW	MH	SEN
-3	4.3	67	112	.91	11	65	.2	-12

Big Time is a Rear End 751R son that had tremendous individual weaning and yearling performance and he has carried that forward with his EPDs for WW and YW. Big Time's daughters have been very popular with customers who have used him. His daughters have a very attractive phenotype along with excellent fertility and udder quality.



OCC Equal 685E

Calved 3-29-17

19391497

OCC Headliner 661H
OCC Moderator 825M
OCC Dixie Erica 845K

OCC Great Plains 943G
OCC Pollyanna 638U
OCC Pollyanna 944H

OCC Emblazon 854E
OCC Juanada 858F
OCC Emblazon 854E
OCC Dixie Erica 960H
N Bar Emulation EXT
Dixie Erica of CH 1019
OCC Anchor 771A
OCC Pollyanna 979F

CED	BW	WW	YW	DMI	Milk	MW	MH	SEN
14	-2.1	28	42	-.13	23	-19	-.9	15

Equal 685E is a low-birth sire that works well on both heifers and cows. He's in the top 4% of the Angus breed for both CED and BW EPDs. His daughters make very efficient cows - note that he's in the top percentile of the breed for SEN and DMI (dry matter intake). Equal is sired by Moderator 825M, a bull recognized for his low-birth traits combined with fleshing ability and a highly attractive phenotype. His dam is the extraordinary Pollyanna 638U cow, a Great Plains daughter that is still in production at 15 years of age and currently raising her 13th calf.



OCC Exceptional Blaze 149E

Calved 4-14-17

ASA 3547570

OCC Missing Link 830M
OCC Anvil 809A
FCC Blackcap Lady 3810

OCC Headliner 661H
OCC Dixie Erica 946K
OCC Anchor 771A
H A Blackcap Lady 0464
OCC Emblazon 854E
OCC Juanada 968G
Sir Arnold J5606
Miss Arnold E5562

OCC Jet Stream 825J
OCC Scarlett 111S
OCC Miss Arnold 134M

CED	BW	WW	YW	CEM	MILK	MWW	STAY	DOC
13.7	-0.5	47.1	60.3	2.6	21.6	45.1	18.4	12.4

Exceptional Blaze 149E is a 1/4 Fleckvieh, 3/4 Angus bull that we have used through both natural and AI service in recent years. He's sired by Anvil 809A, whose dam was a moderate and powerful Anchor daughter. 149E's dam is OCC Scarlett 111S, a highly productive cow with remarkable longevity - she remains in the herd at 17 years of age and will calve again in April 2023 with her 16th calf. Exceptional Blaze is homozygous polled and carries the red gene.



OCC Gulf Stream 183Z

Calved 5-01-12

ASA 4165634

OCC Jet Stream 825J
OCC Jet Stream 939W
OCC Juanada 861T

OCC Emblazon 854E
OCC Juanada 968G
OCC Rancher 680R
OCC Juanada 815R
OCC Hunter 928H
OCC Erica Lassie 839J
Sir Arnold B9018A
Miss Arnold D9496

OCC Mitchell 831M
OCC Miss 134T
Miss Arnold F9708

CED	BW	WW	YW	CEM	MILK	MWW	STAY	DOC
11.4	.2	54.3	80.1	1.6	20.7	47.8	19.0	11.4

Gulf Stream 183Z is a grandson of OCC Jet Stream 825J. His daughters are outstanding and we've used him in both our Fleck-Angus and Angus II programs. Genetically, he's homozygous black and polled. His dam is a smaller framed 1/2 Fleckvieh, 1/2 Angus cow with an enviable production record and great longevity. She remains in production at 16 years of age.



OCC Zebron 871Z

Calved 9-13-12

+*18051619

OCC Homer 650H
OCC Rear End 751R
FCC Revolution Rose 995N

OCC Focus 813F
OCC Dixie Erica 816B
OCC Joker 620J
OCC Revolution Rose 887H
D H D Traveler 6807
OCC Juanada 709V
OCC Bonanza 880B
Pollyanna of R R 5205

OCC Anchor 771A
OCC Pollyanna 944H
OCC Pollyanna 979F

CED	BW	WW	YW	DMI	Milk	MW	MH	SEN
5	1.5	37	60	0.02	19	-30	-1	17

A very balanced son of Rear End. His dam was the 944H cow that went to 18 years of age. Should excel in muscle, fleshing ability and longevity.



OCC Extra Power 307E

Calved 3-15-17

Angus II

OCC Focus 813F
OCC Paxton 730P
OCC Blackbird 736K

Basin Rainmaker 654X
Dixie Erica of C H 1019
OCC Great Plains 943G
OCC Blackbird 824G
OCC Backstop 888B
Blackbird of R R 1204
OCC Anchor 771A
OCC Miss Minotaur 479S

OCC Eureka 865E
OCC Miss 404R
OCC Miss Anchor 488E

Extra Power 307E was a featured Angus II bull in our 2019 auction. He's a Paxton son with top performance and an extremely handsome phenotype. When it comes to muscle mass and depth of body, he's in a league of his own. Lanny Livingston, a good friend and fellow cattleman, purchased the bull in 2019 and has used him through natural service with great success. We retained an interest and collected semen on the bull so have used him in our AI program.



OCC Focus 813F

Calved 3-1-96

12739373

Basin Rainmaker D S 380U
Basin Rainmaker 654X
Basin Bardolene 423U

G D A R Rainmaker 340
Shady Lady Rachel 3233
Basin Emulation 5653
Basin Bardolene 5624
R R Rito 707
Evocate Princess T
Schebrook Emulous 11N7
R R Dixie Erica of C H 447

PBC 707 1M F0203
Dixie Erica of C H 1019
Dixie Erica of C H 615

CED	BW	WW	YW	DMI	Milk	MW	MH	SEN
9	-1.5	34	66	0.86	16	-6	-0.8	16

An old foundation bull out of Rainmaker 654X and the 1019 cow. He is the sire of some great bulls such as Homer, No Problem and Paxton. His daughters have been very fertile with a lot of longevity.



OCC Atlas 664A

Calved 3-16-13

18078526

OCC Focus 813F
OCC Transformation 680T
OCC Dixie Erica 603N

Basin Rainmaker 654X
Dixie Erica of C H 1019
OCC Joker 620J
OCC Dixie Erica 816B
Papa Optima 9818
Papa Envious Blackbird 8832
OCC Emblazon 854E
OCC Dixie Erica 921E

Papa Forte 1921
Chloe Dixie Erica 7313
OCC Dixie Erica 826J

CED	BW	WW	YW	DMI	Milk	MW	MH	SEN
14	-2.2	38	73	1.02	19	-16	-1.1	15

Atlas has one of the most impressive herd sire EPD spreads from low birth to excellent yearling in the OCC program. Atlas was the high selling in in the 2015 sale and has proven to be a great female producer. His daughters have beautiful udders and phenotype. He has excellent calving ease combined with good growth and fleshing ability.

SEMEN ORDERS

Call 1-800-New-Bull

Visit *OhldeCattle.com* for a complete list of bulls. Please call and order semen by Noon Friday April 14 if you would like to pick up your semen order at the sale for a 10% discount.

Delivery to your doorstep is always available as usual but not qualified for the discount. We would love to visit regarding the best choices for your needs.

785-630-0522

2023 Sire Directory

Name	Registration #	Straw	Cert
OCC Emblazon 845E	#12514348	Call	\$50
OCC Paxton 730P	#14940735	Call	\$40
OCC X-tra Easy 708X	#17190960	\$15	\$35
OCC Linebred 661L	#14051770	\$35	\$40
OCC Best Yet 766B	#18413646	\$30	\$40
OCC Zar 869Z	#17995884	\$20	\$35
OCC Alpha 700A	#18041805	\$25	N/A
OCC Hunter 928H	#13354639	\$15	\$30
OCC Rancher 680R	#15289755	\$20	\$50
OCC Eureka 865E	#12514352	Call	\$40
OCC Missing Link 830M	#14456399	\$15	\$40
OCC X-cel 652X	#16877211	\$15	\$35
OCC Picture Perfect	#14940739	\$20	\$35
OCC Dakota 687D *New*	#19067883	\$25	\$40
OCC Epitome 630E *New*	#19391475	\$20	\$40
OCC Accolade 825A	#18078529	\$20	\$40
OCC Night Watch 902N	#14940663	\$20	\$35
OCC Rear End 751R	#15649977	Call	\$40
OCC Big Time 746Z	#17696450	\$20	\$35
OCC Thumper 819T	#16293203	\$20	\$30
OCC Anchor 771A	#11684971	Call	\$30
OCC Unmistakable 946U	#16294218	\$30	\$40
OCC Great Plains 943G	#13092912	\$20	\$30
OCC Echelon 857E	#12514349	Call	\$40
OCC Realist 641R	#15289740	\$15	\$30
OCC No Problems 52N	#15659166	\$100	\$35
OCC Jupiter 671J	#13509906	\$15	\$30
OCC Homer 650H	#13235197	Call	\$30
OCC Y-Not 388Y	#17695293	\$20	\$35



OCC Dixie Erica 628W — this Practical 841P daughter is the dam of OCC Zodiac 655Z, OCC Blueprint 632B and OCC Confidence 820C.



OCC Miss 193F — pictured with her calf by OCC Exceptional Blaze 149E in the fall calving herd at our Beloit, Kansas, ranch. 193F is an OCC Gulf Stream 183Z daughter. We continue to be impressed by the Gulf Stream daughters.



OCC Dixie Erica 638A — The Rear End 751R daughters are exceptional.



OCC Just So 601J

Calved 01/15/21 20602908

OCC Moderator 825M
OCC Deliverance 846D
OCC Blackcap 906B

OCC X-tra Easy 708X
OCC Dixie Erica 828F
OCC Dixie Erica 865D

OCC Headliner 661H
OCC Dixie Erica 845K
OCC Transformation 680T
OCC Blackcap 804M
OCC NO Problems 52N
OCC Dixie Erica 678T
OCC Archon 889A
OCC Dixie Erica 642U

Production EPDs			
CED	BW	WW	YW
8	0	38	65

Maternal EPDs			
CEM	Milk	\$EN	\$W
7	21	15	34

Individual Birth Wt, Ratios, Fleshing Score

BW	Weaning	Yearling	Fleshing
70	106	110	8.6

A moderate framed bull carrying good muscling and depth of body. He's structurally correct with sound feet and legs. Low birth with excellent weaning and yearling performance. Top 2% of the breed for \$EN and top 15% for \$M.



OCC Josiah 607J

Calved 03/07/21 20602869

OCC Linebred 661L
OCC Night Watch 902N
OCC Primrose 931L

OCC Zar 869Z
OCC Pollyanna 721G
OCC Pollyanna 753D

OCC Homer 650H
OCC Dixie Erica 686J
OCC Just Right 619J
OCC Primrose 677H
OCC Homer 650H
OCC Dixie Erica 642U
OCC Zodiac 655Z
OCC Pollyanna 847A

Production EPDs			
CED	BW	WW	YW
11	-2	35	57

Maternal EPDs			
CEM	Milk	\$EN	\$W
6	19	17	33

Individual Birth Wt, Ratios, Fleshing Score

BW	Weaning	Yearling	Fleshing
65	105	97	8.5

This Night Watch son features low-birth and excellent weaning performance. Double bred to the calving ease sire Homer 650H. His Zar sired dam is a Zodiac granddaughter from the Pollyanna family! Top 4% of the breed for BW and top 1% for \$EN.



OCC Jester 609J

Calved 03/07/21 20602871

OCC X-tra Easy 708X
OCC Alpha 700A
OCC Dixie Erica 806Y

OCC Legacy 839L
OCC Dixie Erica 727G
OCC Dixie Erica 742A

OCC NO Problems 52N
OCC Dixie Erica 678T
OCC Jet Stream 825J
OCC Dixie Erica 607P
OCC Echelon 857E
OCC Dixie Erica 960E
OCC Wholesome 667W
OCC Dixie Erica 704X

Production EPDs			
CED	BW	WW	YW
10	-0.4	34	66

Maternal EPDs			
CEM	Milk	\$EN	\$W
5	24	11	32

Individual Birth Wt, Ratios, Fleshing Score

BW	Weaning	Yearling	Fleshing
67	101	107	8.5

Jester is a smaller framed, very attractive son of Alpha. He features a low birth weight with good growth numbers. He's sound on his feet and legs and is a good choice to use on heifers. Top 3% of the breed for \$EN.



OCC Jaunty 604J

Calved 03/02/21 20602868

OCC Headliner 661H
OCC Moderator 825M
OCC Dixie Erica 845K

OCC Headliner 661H
OCC Pollyanna 618G
OCC Pollyanna 638U

OCC Emblazon 854E
OCC Juanada 858F
OCC Emblazon 854E
OCC Dixie Erica 960H
OCC Emblazon 854E
OCC Juanada 858F
OCC Great Plains 943G
OCC Pollyanna 944H

Production EPDs			
CED	BW	WW	YW
14	-2.2	36	60

Maternal EPDs			
CEM	Milk	\$EN	\$W
10	23	11	38

Individual Birth Wt, Ratios, Fleshing Score

BW	Weaning	Yearling	Fleshing
62	109	111	8.4

A Moderator son that's triple bred to Emblazon. A bull with mass and capacity. Very low birth with outstanding weaning and yearling performance. From the great Pollyanna family, he excels in the maternal traits. Top 4% of the breed for CED and top 3% for BW and \$EN EPDs.



OCC Jesper 608J

Calved 03/07/21 20602870

OCC Homer 650H
OCC Linebred 661L
OCC Dixie Erica 686J

OCC Deliverance 846D
OCC Dixie Erica 717G
OCC Dixie Erica 755E

OCC Focus 813F
OCC Dixie Erica 816B
OCC Emblazon 854E
OCC Dixie Erica 816B
OCC Moderator 825M
OCC Blackcap 906B
OCC Zar 869Z
OCC Dixie Erica 663C

Production EPDs			
CED	BW	WW	YW
17	-3.1	32	56

Maternal EPDs			
CEM	Milk	\$EN	\$W
8	21	15	32

Individual Birth Wt, Ratios, Fleshing Score

BW	Weaning	Yearling	Fleshing
55	103	100	8.7

Jesper is a low-birth son of Linebred 661L and would be a good choice for use on heifers. Double bred to the legendary calving ease sire Homer 650H. He's moderate framed with thickness and good feet and legs. Great maternal genetics. Top 1% of the breed for CED and BW, top 2% for \$EN.



OCC Just Stout 610J

Calved 03/07/21 20602872

OCC Transformation 680T
OCC Atlas 664A
Chloe Dixie Erica 7313

OCC Zain 802Z
OCC Dixie Erica 871F
OCC Dixie Erica 634X

OCC Focus 813F
OCC Dixie Erica 603N
Papa Forte 1921
OCC Dixie Erica 826J
OCC Eureka 865E
OCC Dixie Erica 693N
OCC Paxton 730P
OCC Dixie Erica 605K

Production EPDs			
CED	BW	WW	YW
11	-1.2	35	59

Maternal EPDs			
CEM	Milk	\$EN	\$W
3	24	13	37

Individual Birth Wt, Ratios, Fleshing Score

BW	Weaning	Yearling	Fleshing
65	114	103	8.8

An impressive Atlas son, he's very eye appealing and moves out well. Low birth with superior weaning and yearling ratios. He traces to the foundation 1019 cow 9 times. Top 10% of the breed for BW and top 2% for \$EN.



OCC Jacinto 611J

Calved 03/08/21 20602909

OCC Homer 650H

OCC Linebred 661L

OCC Dixie Erica 686J

OCC Zodiac 655Z

OCC Dixie Erica 657G

OCC Dixie Erica 681A

OCC Focus 813F

OCC Dixie Erica 816B

OCC Emblazon 854E

OCC Dixie Erica 816B

OCC Umax 820U

OCC Dixie Erica 628W

OCC Transformation 680T

Chloe Dixie Erica 7313

Production EPDs			
CED	BW	WW	YW
16	-3	25	46

Maternal EPDs				\$Values
CEM	Milk	\$EN	\$W	
7	17	19	21	

Individual Birth Wt, Ratios, Fleshing Score

BW	Weaning	Yearling	Fleshing
58	91	89	8.4

Jacinto is another Linebred son with low-birth genetics. He's an eye appealing, well balanced bull in a smaller framed package. A great choice to help build a herd of efficient replacement females. Top 1% of the breed for CED, top 2% for BW, and top 1% for \$EN.



OCC Janus 624J

Calved 03/13/21 20605384

OCC X-tra Easy 708X

OCC Alpha 700A

OCC Dixie Erica 806Y

OCC Sleep In 7002Z CM

OCC Pollyanna 961B

Pollyanna 938Z

OCC NO Problems 52N

OCC Dixie Erica 678T

OCC Jet Stream 825J

OCC Dixie Erica 607P

OCC NO Problems 52N

CM Dixie Erica 015X OCC

OCC Normalizar 842N

OCC Pollyanna 897W

Production EPDs			
CED	BW	WW	YW
16	-3	30	57

Maternal EPDs				\$Values
CEM	Milk	\$EN	\$W	
9	26	11	37	

Individual Birth Wt, Ratios, Fleshing Score

BW	Weaning	Yearling	Fleshing
66	106	105	8.7

This Alpha son offers great calving ease combined with excellent weaning and yearling performance. He also brings cow herd efficiency and ideal udder conformation to the table. He's in the top 1% of the breed for both CED and BW, the top 3% for \$EN, and the top 10% for DMI (dry matter intake).



OCC Julio 627J

Calved 03/14/21 20602875

OCC Zodiac 655Z

OCC Dakota 687D

OCC Dixie Erica 839A

OCC Echelon 857E

OCC Dixie Erica 884A

OCC Dixie Erica 618W

OCC Umax 820U

OCC Dixie Erica 628W

OCC Paxton 730P

OCC Dixie Erica 637S

D H D Traveler 6807

Dixie Erica of C H 1019

OCC Eureka 865E

OCC Dixie Erica 763M

Production EPDs			
CED	BW	WW	YW
13	-1.9	31	53

Maternal EPDs				\$Values
CEM	Milk	\$EN	\$W	
4	17	17	27	

Individual Birth Wt, Ratios, Fleshing Score

BW	Weaning	Yearling	Fleshing
66	91	97	8.8

Julio is a slightly smaller framed Dakota son that exhibits incredible muscling and depth of body. He offers calving ease (-1.9 BW EPD) and a superb maternal ancestry. Dam is a beautiful Echelon x Eureka bred cow. Top 10% of the breed for CED, top 5% for BW, and top 1% for \$EN.



OCC Jericho 620J

Calved 03/11/21 20602873

OCC Zodiac 655Z

OCC Dakota 687D

OCC Dixie Erica 839A

OCC NO Problems 52N

OCC Dixie Erica 779D

OCC Dixie Erica 803Z

OCC Umax 820U

OCC Dixie Erica 628W

OCC Paxton 730P

OCC Dixie Erica 637S

OCC Focus 813F

OCC Dixie Erica 816B

OCC Eureka 865E

OCC Dixie Erica 693N

Production EPDs			
CED	BW	WW	YW
9	0.4	42	70

Maternal EPDs				\$Values
CEM	Milk	\$EN	\$W	
0	19	15	40	

Individual Birth Wt, Ratios, Fleshing Score

BW	Weaning	Yearling	Fleshing
84	112	110	9

A very masculine son of Dakota. You will like his length of body and depth of rib. His pedigree traces to the Dixie Erica 1019 foundation cow 11 times! Excellent weaning and yearling performance. Top 2% of the breed for \$EN.



OCC Judd 625J

Calved 03/13/21 20602874

OCC Homer 650H

OCC Rear End 751R

FCC Revolution Rose 995N



OCC NO Problems 52N

OCC Evonne 632C

OCC Evonne 806A

OCC Focus 813F

OCC Dixie Erica 816B

OCC Joker 620J

OCC Revolution Rose 887H

OCC Focus 813F

OCC Dixie Erica 816B

OCC Rear End 751R

BHA Evonne 180

Production EPDs			
CED	BW	WW	YW
6	1.1	41	71

Maternal EPDs				\$Values
CEM	Milk	\$EN	\$W	
4	18	17	32	

Individual Birth Wt, Ratios, Fleshing Score

BW	Weaning	Yearling	Fleshing
80	99	103	8.3

Judd is a Rear End son that's moderate in frame, deep bodied, and thick with style and balance. His dam is a productive No Problems daughter. He's linebred to Rear End, Focus 813F, and the 816B cow. Top 1% of the breed for \$EN and top 15% for \$M.



OCC Judgement 630J

Calved 03/15/21 20602876

OCC Zodiac 655Z

OCC Dakota 687D

OCC Dixie Erica 839A



OCC Eureka 865E

OCC Dixie Erica 803X

OCC Dixie Erica 612H

OCC Umax 820U

OCC Dixie Erica 628W

OCC Paxton 730P

OCC Dixie Erica 637S

OCC Backstop 888B

Blackbird of R R 1204

D H D Traveler 6807

OCC Dixie Erica 803F

Production EPDs			
CED	BW	WW	YW
9	-0.2	33	54

Maternal EPDs				\$Values
CEM	Milk	\$EN	\$W	
-1	21	15	37	

Individual Birth Wt, Ratios, Fleshing Score

BW	Weaning	Yearling	Fleshing
78	100	100	9.2

Judgement is a powerful son of Dakota and out of the phenomenal 803X donor cow. An ET calf, he offers superb low-input cow efficiency traits and excellent udder quality. Top 2% if the breed for \$EN and top 4% for DMI (dry matter intake). Full ET brothers sell as lots 21, 22, and 24.



OCC Josh 632J

Calved 03/15/21 20602877

OCC Umax 820U
OCC Zodiac 655Z
 OCC Dixie Erica 628W

OCC Echelon 857E
OCC Dixie Erica 818A
 OCC Dixie Erica 693N

OCC Paxton 730P
 OCC Dixie Erica 801M
 OCC Practical 841P
 Chloe Dixie Erica 7313
 D H D Traveler 6807
 Dixie Erica of C H 1019
 OCC Headliner 661H
 OCC Dixie Erica 907C

Production EPDs			
CED	BW	WW	YW
7	0.3	36	68

Maternal EPDs				\$Values
CEM	Milk	\$EN	\$W	
1	18	14	30	

Individual Birth Wt, Ratios, Fleshing Score			
BW	Weaning	Yearling	Fleshing
78	103	108	8.8

A thick and stout Zodiac son out of an excellent Echelon daughter that goes back to the great 907C cow. His pedigree traces to the foundation 1019 cow 10 times. Note his excellent weaning and yearling performance. Top 2% of the breed for \$EN and top 15% for DMI.



OCC Joffrey 637J

Calved 03/16/21 20602878

D H D Traveler 6807
OCC Echelon 857E
 Dixie Erica of C H 1019

OCC Rear End 751R
OCC Pollyanna 610B
 OCC Pollyanna 944H

Q A S Traveler 23-4
 Bemindful Maid D H D 0807
 PBC 707 1M F0203
 Dixie Erica of C H 615
 OCC Homer 650H
 FCC Revolution Rose 995N
 OCC Anchor 771A
 OCC Pollyanna 979F

Production EPDs			
CED	BW	WW	YW
13	-1.9	31	51

Maternal EPDs				\$Values
CEM	Milk	\$EN	\$W	
8	18	19	29	

Individual Birth Wt, Ratios, Fleshing Score			
BW	Weaning	Yearling	Fleshing
65	96	91	8.8

This Echelon son is thick and stout with an abundance of balance and style. Very low birth weight with good performance EPDs. His Rear End sired dam is a heavy milking cow with excellent udder quality. Top 5% of the breed for BW and top 1% for \$EN.



OCC Jolt 641J

Calved 03/16/21 20602879

OCC Paxton 730P
OCC Epitome 630E
 OCC Dixie Erica 730W

OCC Focus 813F
OCC Pollyanna 643E
 OCC Pollyanna 744Y

OCC Focus 813F
 OCC Blackbird 736K
 OCC Rear End 751R
 OCC Dixie Erica 776M
 Basin Rainmaker 654X
 Dixie Erica of C H 1019
 OCC Paxton 730P
 OCC Pollyanna 944H

Production EPDs			
CED	BW	WW	YW
6	1.3	42	77

Maternal EPDs				\$Values
CEM	Milk	\$EN	\$W	
0	19	14	32	

Individual Birth Wt, Ratios, Fleshing Score			
BW	Weaning	Yearling	Fleshing
81	96	101	8.6

An Epitome son that's massively thick and wide topped. We are very impressed by the Epitome progeny. Double bred to Paxton and he also traces to the 1019 cow 9 times. His dam is a younger Focus daughter from the Pollyanna family. Top 2% of the breed for \$EN.



OCC Just My Style 633J

Calved 03/15/21 20602910

OCC Umax 820U
OCC Zodiac 655Z
 OCC Dixie Erica 628W

OCC Moderator 825M
OCC Pollyanna 847A
 OCC Pollyanna 944H

OCC Paxton 730P
 OCC Dixie Erica 801M
 OCC Practical 841P
 Chloe Dixie Erica 7313
 OCC Headliner 661H
 OCC Dixie Erica 845K
 OCC Anchor 771A
 OCC Pollyanna 979F

Production EPDs			
CED	BW	WW	YW
10	-0.6	31	54

Maternal EPDs				\$Values
CEM	Milk	\$EN	\$W	
4	18	16	26	

Individual Birth Wt, Ratios, Fleshing Score			
BW	Weaning	Yearling	Fleshing
75	100	101	8.9

Zodiac sons bring the complete package of ample muscle, fleshing ability, performance, soundness, and a good look. His dam is an attractive, great uddered Moderator daughter out of the 944H cow. Top 15% of the breed for BW and top 1% for \$EN.



OCC Joist 638J

Calved 03/16/21 20605386

OCC Homer 650H
OCC Rear End 751R
 FCC Revolution Rose 995N

OCC Work of Art 766W
OCC Blackcap 754C
 OCC Blackcap 606Z

OCC Focus 813F
 OCC Dixie Erica 816B
 OCC Joker 620J
 OCC Revolution Rose 887H
 OCC Great Plains 943G
 OCC Dixie Erica 662J
 OCC Jet Stream 825J
 OCC Blackcap 872K

Production EPDs			
CED	BW	WW	YW
9	-0.1	42	69

Maternal EPDs				\$Values
CEM	Milk	\$EN	\$W	
6	21	14	39	

Individual Birth Wt, Ratios, Fleshing Score			
BW	Weaning	Yearling	Fleshing
75	120	116	8.5

A Rear End son that's thick, deep sided, attractive, and sound. Very moderate birth with exceptional weaning and yearling performance! Note that his dam is a Work of Art daughter from the Blackcap family - solid maternal traits throughout. Top 2% of the breed for \$EN.



OCC Just Good 644J

Calved 03/17/21 20602880

OCC Backstop 888B
OCC Eureka 865E
 Blackbird of R R 1204

Akers Missing Link 9603
OCC Dixie Erica 789A
 OCC Dixie Erica 730W

D H D Traveler 6807
 Revolution Rose of R R 9239
 PBC 707 1M F0203
 Blackbird of R R 7023
 OCC Missing Link 830M
 OCC Blackbird 736K
 OCC Rear End 751R
 OCC Dixie Erica 776M

Production EPDs			
CED	BW	WW	YW
1	3	48	77

Maternal EPDs				\$Values
CEM	Milk	\$EN	\$W	
-7	26	6	45	

Individual Birth Wt, Ratios, Fleshing Score			
BW	Weaning	Yearling	Fleshing
92	113	112	8.9

This Eureka son is stout, well balanced, and stylish with outstanding weaning and yearling. His dam is a big volume, easy fleshing cow that always brings in a heavy calf. Note that his maternal granddam, 730W, is the dam of OCC Epitome 630E! Top 10% of the breed for \$EN and top 3% for DMI.



OCC Jet Power 645J

Calved 03/17/21 20605385

OCC X-tra Easy 708X
OCC Alpha 700A
OCC Dixie Erica 806Y

OCC Moderator 825M
OCC Juanada 641Z
OCC Juanada 827X

OCC NO Problems 52N
OCC Dixie Erica 678T
OCC Jet Stream 825J
OCC Dixie Erica 607P
OCC Headliner 661H
OCC Dixie Erica 845K
OCC Eureka 865E
OCC Juanada 858F

Production EPDs			
CED	BW	WW	YW
14	-3.2	38	63

Maternal EPDs			
CEM	Milk	\$EN	\$W
8	28	4	48

Individual Birth Wt, Ratios, Fleshing Score			
BW	Weaning	Yearling	Fleshing
65	117	110	8.5

This Alpha son is remarkable for calving ease and exceptional weaning and yearling performance. His dam and maternal granddam remain in production at 11 and 13 years of age respectively. Top 4% of the breed for CED, top 1% for BW, top 10% for \$EN, and top 3% for DMI.



OCC Joule 656J

Calved 03/15/21 20602882

OCC Zodiac 655Z
OCC Dakota 687D
OCC Dixie Erica 839A

FEATURED LOT
OCC Eureka 865E
OCC Dixie Erica 803X
OCC Dixie Erica 612H

OCC Umax 820U
OCC Dixie Erica 628W
OCC Paxton 730P
OCC Dixie Erica 637S
OCC Backstop 888B
Blackbird of R R 1204
D H D Traveler 6807
OCC Dixie Erica 803F

Production EPDs			
CED	BW	WW	YW
9	-0.2	33	54

Maternal EPDs			
CEM	Milk	\$EN	\$W
-1	21	15	37

Individual Birth Wt, Ratios, Fleshing Score			
BW	Weaning	Yearling	Fleshing
80	100	100	9

The second of four ET Dakota sons out of the powerfully efficient 803X donor cow. He's long-bodied, heavy muscled, deep ribbed, and smooth. Top 2% of the breed for \$EN and top 4% for DMI. Full brothers sell as lots 12, 22, and 24.



OCC Jim Dandy 658J

Calved 03/18/21 20602893

OCC Emblazon 854E
OCC Jet Stream 825J
OCC Juanada 968G

FEATURED LOT
OCC Missing Link 830M
OCC Dixie Erica 771R
OCC Dixie Erica 776M

D H D Traveler 6807
Dixie Erica of C H 1019
OCC Eureka 865E
OCC Juanada 774A
OCC Headliner 661H
OCC Dixie Erica 946K
OCC Eureka 865E
OCC Dixie Erica 606G

Production EPDs			
CED	BW	WW	YW
5	1.7	46	78

Maternal EPDs			
CEM	Milk	\$EN	\$W
-3	22	2	44

Individual Birth Wt, Ratios, Fleshing Score			
BW	Weaning	Yearling	Fleshing
84	100	100	8.2

Jim Dandy is a big, heavy muscled bull that will add growth and performance to his calves. This ET bull is a son of Jet Stream 825J. His dam is Dixie Erica 771R, making him a maternal brother to Accolade and full brother to Double Impact. Top 10% for both \$EN and DMI.



OCC Jefford 653J

Calved 03/19/21 20602881

OCC Emblazon 854E
OCC Headliner 661H
OCC Juanada 858F

OCC Blueprint 632B
OCC Dixie Erica 625G
OCC Dixie Erica 669D

D H D Traveler 6807
Dixie Erica of C H 1019
Basin Rainmaker 654X
OCC Juanada 709V
OCC Moderator 825M
OCC Dixie Erica 628W
OCC Focus 813F
OCC Dixie Erica 607B

Production EPDs			
CED	BW	WW	YW
11	-1.5	34	56

Maternal EPDs			
CEM	Milk	\$EN	\$W
5	21	14	34

Individual Birth Wt, Ratios, Fleshing Score			
BW	Weaning	Yearling	Fleshing
57	101	100	8.6

A son of Headliner 661H, the Emblazon son that we exported to Argentina in 1999. He's low birth with good weaning and yearling numbers. His dam is a young Blueprint daughter and his pedigree traces to the 1019 cow 4 times. Top 2% of the breed for \$EN.



OCC Jaxon 657J

Calved 03/16/21 20602883

OCC Zodiac 655Z
OCC Dakota 687D
OCC Dixie Erica 839A

FEATURED LOT
OCC Eureka 865E
OCC Dixie Erica 803X
OCC Dixie Erica 612H

OCC Umax 820U
OCC Dixie Erica 628W
OCC Paxton 730P
OCC Dixie Erica 637S
OCC Backstop 888B
Blackbird of R R 1204
D H D Traveler 6807
OCC Dixie Erica 803F

Production EPDs			
CED	BW	WW	YW
9	-0.2	33	54

Maternal EPDs			
CEM	Milk	\$EN	\$W
-1	21	15	37

Individual Birth Wt, Ratios, Fleshing Score			
BW	Weaning	Yearling	Fleshing
82	100	100	9

A heavy muscled, long-bodied, moderate framed bull that is very sound on his feet and legs. Another one of the four ET Dakota sons out of the great 803X donor cow. Top 2% of the breed for \$EN and top 4% for DMI. Full brothers sell as lots 12, 21, and 24.



OCC Journeyman 659J

Calved 03/19/21 20602884

OCC Zodiac 655Z
OCC Dakota 687D
OCC Dixie Erica 839A

FEATURED LOT
OCC Eureka 865E
OCC Dixie Erica 803X
OCC Dixie Erica 612H

OCC Umax 820U
OCC Dixie Erica 628W
OCC Paxton 730P
OCC Dixie Erica 637S
OCC Backstop 888B
Blackbird of R R 1204
D H D Traveler 6807
OCC Dixie Erica 803F

Production EPDs			
CED	BW	WW	YW
9	-0.2	33	54

Maternal EPDs			
CEM	Milk	\$EN	\$W
-1	21	15	37

Individual Birth Wt, Ratios, Fleshing Score			
BW	Weaning	Yearling	Fleshing
84	100	100	9

This ET bull is another very stout and impressive Dakota son out of the beautiful and efficient 803X cow. He's thick and stout and will sire an incredible set of replacement females. Top 2% of the breed for \$EN and top 4% for DMI. Full brothers sell as lots 12, 21, and 22.



OCC Just Slick & Good 668J

Calved 03/20/21 20602885

OCC Homer 650H

OCC Rear End 751R

FCC Revolution Rose 995N

FEATURED LOT

OCC Eureka 865E

OCC Dixie Erica 665Z

OCC Dixie Erica 773U

OCC Focus 813F

OCC Dixie Erica 816B

OCC Joker 620J

OCC Revolution Rose 887H

OCC Backstop 888B

Blackbird of R R 1204

OCC Prestige 672P

OCC Dixie Erica 778J

Production EPDs			
CED	BW	WW	YW
4	1.5	44	71

Maternal EPDs			
CEM	Milk	\$EN	\$W
1	22	13	40

Individual Birth Wt, Ratios, Fleshing Score			
BW	Weaning	Yearling	Fleshing
82	108	106	9.2

This Rear End son is just what his name states. It can also be said he's wide topped and muscular. His dam is a beautiful and easy fleshing Eureka daughter with a perfect udder. Moderate birth with excellent weaning and yearling ratios. Top 3% of the breed for \$EN and top 25% for \$M.



OCC Jarvis 672J

Calved 03/21/21 20602912

OCC Homer 650H

OCC Rear End 751R

FCC Revolution Rose 995N

OCC Echelon 857E

OCC Dixie Erica 603Z

OCC Dixie Erica 605K

OCC Focus 813F

OCC Dixie Erica 816B

OCC Joker 620J

OCC Revolution Rose 887H

D H D Traveler 6807

Dixie Erica of C H 1019

Papa Forte 1921

OCC Dixie Erica 921D

Production EPDs			
CED	BW	WW	YW
6	1.2	34	56

Maternal EPDs			
CEM	Milk	\$EN	\$W
4	19	19	30

Individual Birth Wt, Ratios, Fleshing Score			
BW	Weaning	Yearling	Fleshing
80	101	96	9

Jarvis is a heavy muscled, deep-sided Rear End son with balance and style. His dam is a powerful Echelon daughter and she gets a lot of that from her dam, the stout 605K donor cow by Forte. Top 1% of the breed for \$EN and top 40% for \$M.



OCC Just The Man 677J

Calved 03/22/21 20602913

OCC Homer 650H

OCC Rear End 751R

FCC Revolution Rose 995N

OCC Focus 813F

OCC Dixie Erica 690D

OCC Dixie Erica 609B

OCC Focus 813F

OCC Dixie Erica 816B

OCC Joker 620J

OCC Revolution Rose 887H

Basin Rainmaker 654X

Dixie Erica of C H 1019

OCC Rancher 680R

OCC Dixie Erica 803F

Production EPDs			
CED	BW	WW	YW
3	1.9	38	69

Maternal EPDs			
CEM	Milk	\$EN	\$W
2	19	16	27

Individual Birth Wt, Ratios, Fleshing Score			
BW	Weaning	Yearling	Fleshing
86	95	102	8.5

Another attractive Rear End son. He is a long, heavy muscled, and deep bodied bull. His pedigree traces to the 1019 cow 6 times. Top 1% of the breed for \$EN and top 10% for \$M.



OCC Jonas 671J

Calved 03/21/21 20602911

OCC Homer 650H

OCC Linebred 661L

OCC Dixie Erica 686J

OCC Blueprint 632B

OCC Erica Lassie 613G

OCC Erica Lassie 761D

OCC Focus 813F

OCC Dixie Erica 816B

OCC Emblazon 854E

OCC Dixie Erica 816B

OCC Moderator 825M

OCC Dixie Erica 628W

OCC Zodiac 655Z

OCC Erica Lassie 688A

Production EPDs			
CED	BW	WW	YW
15	-2.2	35	62

Maternal EPDs			
CEM	Milk	\$EN	\$W
7	19	15	32

Individual Birth Wt, Ratios, Fleshing Score			
BW	Weaning	Yearling	Fleshing
60	100	103	8.6

This Linebred 661L son is bred for calving ease. He's very low birth (-2.2 BW EPD) but also has good weaning and yearling numbers. His dam is an attractive young Blueprint daughter. Top 2% of the breed for CED, top 3% for BW, and top 2% for \$EN.



OCC Jethro 676J

Calved 03/22/21 20602886

OCC Zodiac 655Z

OCC Felder 805F

OCC Dixie Erica 730W

OCC You're Exact 763Y

OCC Revolution Rose 929B

OCC Revolution Rose 780Y

OCC Umax 820U

OCC Dixie Erica 628W

OCC Rear End 751R

OCC Dixie Erica 776M

OCC Paxton 730P

OCC Pollyanna 944H

OCC Jupiter 671J

OCC Revolution Rose 743K

Production EPDs			
CED	BW	WW	YW
7	1	42	70

Maternal EPDs			
CEM	Milk	\$EN	\$W
1	19	14	35

Individual Birth Wt, Ratios, Fleshing Score			
BW	Weaning	Yearling	Fleshing
80	106	104	8.6

Felder 805F is producing some excellent cattle for us. This son features muscle, style, balance, growth, and fleshing ability. His dam is double bred to Anchor 771A. Top 2% of the breed for \$EN.



OCC Dixie Erica 665Z — This powerful and easy fleshing Eureka 865E daughter is the dam of Lot 25.



OCC Jammer 681J

Calved 03/22/21 20602892

OCC Emblazon 854E

OCC Jet Stream 825J

OCC Juanada 968G

FEATURED LOT

OCC Missing Link 830M

OCC Dixie Erica 771R

OCC Dixie Erica 776M

D H D Traveler 6807

Dixie Erica of C H 1019

OCC Eureka 865E

OCC Juanada 774A

OCC Headliner 661H

OCC Dixie Erica 946K

OCC Eureka 865E

OCC Dixie Erica 606G

Production EPDs			
CED	BW	WW	YW
5	1.7	46	78

Maternal EPDs			
CEM	Milk	\$EN	\$W
-3	22	2	44

Individual Birth Wt, Ratios, Fleshing Score			
BW	Weaning	Yearling	Fleshing
76	100	100	8.3

This Jet Stream son is stout and growthy with a little more frame. He's an ET bull out of the Dixie Erica 771R cow and is a full brother to Double Impact 722D and the bull that sells as lot 23. He will sire efficient cow herd traits. Top 10% of the breed for \$EN and DMI.



OCC Javelin 688J

Calved 03/24/21 20602888

OCC Focus 813F

OCC Homer 650H

OCC Dixie Erica 816B

OCC Legacy 839L

OCC Dixie Erica 630G

OCC Dixie Erica 812A

Basin Rainmaker 654X

Dixie Erica of C H 1019

D H D Traveler 6807

Dixie Erica of C H 1019

OCC Echelon 857E

OCC Dixie Erica 960E

OCC Rear End 751R

OCC Dixie Erica 605K

Production EPDs			
CED	BW	WW	YW
15	-2	27	47

Maternal EPDs			
CEM	Milk	\$EN	\$W
8	21	17	27

Individual Birth Wt, Ratios, Fleshing Score			
BW	Weaning	Yearling	Fleshing
58	102	101	8.8

This Homer son offers great calving ease and good weaning and yearling performance. Homer calves display incredible calf vigor, often standing to nurse within 10 minutes after birth. His dam is an attractive young Legacy daughter with ideal udder quality. Top 2% for CED, top 4% for BW, top 1% for \$EN, and top 35% for \$M.



OCC Jay 695J

Calved 03/26/21 20602889

D H D Traveler 6807

OCC Echelon 857E

Dixie Erica of C H 1019

OCC Eureka 865E

OCC Dixie Erica 608W

OCC Dixie Erica 816B

Q A S Traveler 23-4

Bemindful Maid D H D 0807

PBC 707 1M F0203

Dixie Erica of C H 615

OCC Backstop 888B

Blackbird of R R 1204

D H D Traveler 6807

Dixie Erica of C H 1019

Production EPDs			
CED	BW	WW	YW
11	-0.9	35	61

Maternal EPDs			
CEM	Milk	\$EN	\$W
3	20	16	35

Individual Birth Wt, Ratios, Fleshing Score			
BW	Weaning	Yearling	Fleshing
74	101	102	8.6

We continue to use Echelon in our program because he sires fantastic cows. Jay's dam is a Eureka daughter that remains in production at 14 years of age. Note that his maternal granddam is the 816B cow! Very moderate birth with good weaning and yearling ratios. Top 2% of the breed for \$EN.



OCC Dixie Erica 803X — This beautiful Eureka 865E daughter is the dam of four excellent ET sons in the sale. All sired by Dakota 687D, they are Lots 12, 21, 22 and 24.



OCC Dixie Erica 839A — This high-capacity Paxton 730P daughter is the dam of OCC Dakota 687D. There are many top Dakota sons in the sale offering, including both registered Angus and Angus II.



OCC Jingles 696J

Calved 03/26/21 20602890

OCC Zodiac 655Z

OCC Dakota 687D

OCC Dixie Erica 839A

OCC Zodiac 655Z

OCC Dixie Erica 673D

OCC Dixie Erica 843A

OCC Umax 820U

OCC Dixie Erica 628W

OCC Paxton 730P

OCC Dixie Erica 637S

OCC Umax 820U

OCC Dixie Erica 628W

OCC NO Problems 52N

Chloe Dixie Erica 7313

Production EPDs			
CED	BW	WW	YW
8	0.7	35	59

A Dakota son that's long-bodied and heavy muscled. He's double bred to Zodiac 655Z. He's also triple bred to Paxton 730P. He'll sire an excellent set of replacement females. Top 1% of the breed for \$EN.

Maternal EPDs			
CEM	Milk	\$EN	\$W
1	15	20	25

Individual Birth Wt, Ratios, Fleshing Score			
BW	Weaning	Yearling	Fleshing
85	95	97	8.9



OCC Jedi 697J

Calved 03/25/21 20602891

D H D Traveler 6807

OCC Echelon 857E

Dixie Erica of C H 1019

OCC Eureka 865E

OCC Erica Lassie 729S

OCC Erica Lassie 884L

Q A S Traveler 23-4

Bemindful Maid D H D 0807

PBC 707 1M F0203

Dixie Erica of C H 615

OCC Backstop 888B

Blackbird of R R 1204

OCC Hunter 928H

OCC Erica Lassie 839J

Production EPDs			
CED	BW	WW	YW
9	0.2	39	64

Maternal EPDs			
CEM	Milk	\$EN	\$W
3	20	15	41

Individual Birth Wt, Ratios, Fleshing Score			
BW	Weaning	Yearling	Fleshing
82	100	100	8.9

Jedi is a very eye-appealing son of Echelon. He's smooth-made, wide-based, and moderate in frame. He's an ET bull out of an older Eureka daughter, Erica Lassie 729S, from a cow family with great soundness and longevity. Top 2% of the breed for \$EN and top 3% for DMI.



OCC Jandro 701J

Calved 03/27/21 20605380

OCC Umax 820U

OCC Zodiac 655Z

OCC Dixie Erica 628W

OCC Jet Stream 825J

OCC Juanada 751A

OCC Juanada 826R

OCC Paxton 730P

OCC Dixie Erica 801M

OCC Practical 841P

Chloe Dixie Erica 7313

OCC Emblazon 854E

OCC Juanada 968G

D D A Fahren 21X

OCC Juanada 968G

Production EPDs			
CED	BW	WW	YW
5	1.5	36	60

Maternal EPDs			
CEM	Milk	\$EN	\$W
-2	21	14	31

Individual Birth Wt, Ratios, Fleshing Score			
BW	Weaning	Yearling	Fleshing
85	108	104	8.5

Jandro is a Zodiac son with great weaning and yearling performance. He is thick, long, deep, and attractive. His dam is from the great Juanada cow family that produced Jet Stream. Top 2% of the breed for \$EN.

SEMEN ORDERS

Visit *OhldeCattle.com* for a complete list of bulls. Please call and order semen early so we can make sure it is delivered to your doorstep in time for breeding. We would love to visit regarding the best choices for your needs.

785-630-0522



OCC Jazz 698J

Calved 03/26/21 20602894

OCC Paxton 730P

OCC Accolade 825A

OCC Dixie Erica 771R

FEATURED LOT

OCC Big Time 746Z

OCC Dixie Erica 663C

OCC Dixie Erica 605K

OCC Focus 813F

OCC Blackbird 736K

OCC Missing Link 830M

OCC Dixie Erica 776M

OCC Rear End 751R

OCC Dixie Erica 771R

Papa Forte 1921

OCC Dixie Erica 921D

Production EPDs			
CED	BW	WW	YW
-3	5.2	56	100

Maternal EPDs			
CEM	Milk	\$EN	\$W
-7	22	-12	34

Individual Birth Wt, Ratios, Fleshing Score			
BW	Weaning	Yearling	Fleshing
94	107	115	8.5

Massive is the best word to describe Jazz. Watch him walk. He's heavy muscled from every angle you look. His dam is a powerful Big Time daughter that also features Papa Forte in her pedigree. A heavier birth weight bull but with excellent weaning and yearling performance. A bull to use on cows for those extra heavy weaning weights.



OCC Jock 703J

Calved 03/27/21 20602914

OCC Homer 650H

OCC Rear End 751R

FCC Revolution Rose 995N

FEATURED LOT

OCC Moderator 825M

OCC Pollyanna 636B

OCC Pollyanna 683X

OCC Focus 813F

OCC Dixie Erica 816B

OCC Joker 620J

OCC Revolution Rose 887H

OCC Headliner 661H

OCC Dixie Erica 845K

OCC Remarkabull 937R

OCC Pollyanna 944H

Production EPDs			
CED	BW	WW	YW
11	-1.5	37	60

Maternal EPDs			
CEM	Milk	\$EN	\$W
8	19	17	38

Individual Birth Wt, Ratios, Fleshing Score			
BW	Weaning	Yearling	Fleshing
71	105	101	9

Jock is a Rear End son that's long, smooth, thick, and deep-bodied. He's big footed with plenty of bone. His dam is a beautiful Moderator daughter from the Pollyanna family that goes back to 683X and 944H. Low birth combined with solid weaning and yearling performance. Top 15% of the breed for CED, top 10% for BW, top 1% for \$EN, and top 4% for DMI.



OCC Johnny Jumbo 708J, Lot 39, pictured as a calf in the summer of 2021 with his dam OCC Dixie Erica 607B.

Lot 39 – OCC Johnny Jumbo



Calved 03/29/21

20347650

OCC Homer 650H

OCC Focus 813F

OCC Rear End 751R

OCC Dixie Erica 816B

FCC Revolution Rose 995N

OCC Joker 620J

FEATURED LOT

OCC Revolution Rose 887H

OCC Paxton 730P

OCC Focus 813F

OCC Dixie Erica 607B

OCC Blackbird 736K

OCC Dixie Erica 801M

OCC Joker 620J

OCC Dixie Erica 907C

Production EPDs			
CED	BW	WW	YW
6	1.4	52	85

Maternal EPDs			\$Values
CEM	Milk	\$EN	\$W
5	19	14	48

Individual Birth Wt, Ratios, Fleshing Score			
BW	Weaning	Yearling	Fleshing
78	119	120	9.5

Johnny Jumbo is a very masculine son of Rear End. He epitomizes style & balance and maternal excellence. Tim has been following this bull since the day he was born. He's one of those rare individuals that stood out early and just got better with time. He displayed tremendous performance through the weaning and yearling stages. Interestingly, he's not the heaviest bull in the group today but we don't consider that a fault. Efficient, grass-based cattle don't need an extended growth curve. He's doing just what he should for cattle that can thrive and adapt under forage conditions.

Johnny Jumbo's maternal ancestry is second to none. His dam is a big capacity Paxton daughter with abundant fleshing ability and excellent udder quality. His maternal granddam, 801M, was an exceptional Joker daughter that's the paternal granddam of Zodiac. His great granddam 907C is a full sister to Great Plains (EXT x 1019). He's double bred to both Joker and Focus. He traces 5 times to 6807 and 7 times to the 1019 cow. Top 10% for \$M, top 2% for \$EN, and top 10% for DMI!

Tim named this bull "Johnny Jumbo" in honor of an Ohlde family legacy. His great grandfather was an accomplished stockman who specialized in producing mules. In 1910, his legendary mammoth jack "Johnny Jumbo" was widely acclaimed to be the best jack west of the Mississippi.



OCC Dixie Erica 607B — dam of Lot 39.



OCC Dixie Erica 801M — grandam of Lot 39.



OCC Junction 710J

Calved 03/29/21 20605381

OCC Homer 650H
OCC Rear End 751R
FCC Revolution Rose 995N

OCC Paxton 730P
OCC Dixie Erica 708A
OCC Dixie Erica 706S

OCC Focus 813F
OCC Dixie Erica 816B
OCC Joker 620J
OCC Revolution Rose 887H
OCC Focus 813F
OCC Blackbird 736K
OCC Missing Link 830M
OCC Dixie Erica 614M

Production EPDs			
CED	BW	WW	YW
12	-1.2	44	67

Maternal EPDs			
CEM	Milk	\$EN	\$W
7	19	16	42

Individual Birth Wt, Ratios, Fleshing Score			
BW	Weaning	Yearling	Fleshing
67	109	105	9

Junction is a long, heavy muscled, and deep sided Rear End son. His dam is a productive Paxton daughter with excellent udder quality. He offers low birth weight with excellent weaning and yearling performance. Top 10% of the breed for CED and BW, top 1% for \$EN.



OCC Jimador 715J

Calved 03/30/21 20602897

OCC Paxton 730P
OCC Accolade 825A
OCC Dixie Erica 771R

OCC Great Plains 943G
OCC Dixie Erica 638D
OCC Dixie Erica 721Y

OCC Focus 813F
OCC Blackbird 736K
OCC Missing Link 830M
OCC Dixie Erica 776M
N Bar Emulation EXT
Dixie Erica of C H 1019
OCC Practical 841P
OCC Dixie Erica 808U

Production EPDs			
CED	BW	WW	YW
16	-3.4	41	69

Maternal EPDs			
CEM	Milk	\$EN	\$W
6	21	4	41

Individual Birth Wt, Ratios, Fleshing Score			
BW	Weaning	Yearling	Fleshing
52	96	96	8.4

Jimador is a calving ease bull that's a grandson of both Paxton and Great Plains, two great sires in the OCC program. Note his birth weight EPD of -3.4. Top 1% of the breed for both CED and BW, top 10% for \$EN, and top 25% for \$M.



OCC Jury's In 723J

Calved 04/02/21 20602915

OCC Focus 813F
OCC Future 635F
OCC Pollyanna 683X

OCC Alpha 700A
OCC Dixie Erica 717F
OCC Dixie Erica 745A

Basin Rainmaker 654X
Dixie Erica of C H 1019
OCC Remarkabull 937R
OCC Pollyanna 944H
OCC X-tra Easy 708X
OCC Dixie Erica 806Y
OCC Wholesome 667W
OCC Dixie Erica 714X

Production EPDs			
CED	BW	WW	YW
7	0.4	37	70

Maternal EPDs			
CEM	Milk	\$EN	\$W
3	21	10	31

Individual Birth Wt, Ratios, Fleshing Score			
BW	Weaning	Yearling	Fleshing
80	103	107	8.5

Jury's In is a son of Future 635F, a young bull that we're excited about. Future is a Focus son out of the great Pollyanna 683X cow so maternal excellence is a given. Very good weaning and yearling performance. Top 4% of the breed for \$EN and top 35% for \$M.



OCC Jam Packed 712J

Calved 03/30/21 20602896

OCC Paxton 730P
OCC Epitome 630E
OCC Dixie Erica 730W

FEATURED LOT

OCC Zar 869Z
OCC Dixie Erica 755E
OCC Dixie Erica 663C

OCC Focus 813F
OCC Blackbird 736K
OCC Rear End 751R
OCC Dixie Erica 776M
OCC Homer 650H
OCC Dixie Erica 642U
OCC Big Time 746Z
OCC Dixie Erica 605K

Production EPDs			
CED	BW	WW	YW
6	1.8	44	78

Maternal EPDs			
CEM	Milk	\$EN	\$W
1	22	12	36

Individual Birth Wt, Ratios, Fleshing Score			
BW	Weaning	Yearling	Fleshing
84	100	100	8.8

A powerful son of Epitome that's wide-based and thick topped. He's double bred to Rear End. His dam is a daughter of Zar 869Z, a bull that's proven for calving ease and tremendous maternal traits. Top 3% of the breed for \$EN and top 10% for \$M.



OCC Jack Daniels 722J

Calved 03/24/21 20602898

OCC Emblazon 854E
OCC Headliner 661H
OCC Juanada 858F

OCC Work of Art 766W
OCC Dixie Erica 789C
OCC Dixie Erica 818Z

D H D Traveler 6807
Dixie Erica of C H 1019
Basin Rainmaker 654X
OCC Juanada 709V
OCC Great Plains 943G
OCC Dixie Erica 662J
OCC Jet Stream 825J
OCC Dixie Erica 864L

Production EPDs			
CED	BW	WW	YW
7	0.3	38	62

Maternal EPDs			
CEM	Milk	\$EN	\$W
2	23	12	37

Individual Birth Wt, Ratios, Fleshing Score			
BW	Weaning	Yearling	Fleshing
75	104	101	8.7

Jack Daniels is good, and we're talking about the bull and not the whiskey (but nothing against the whiskey!). He's a son of Headliner and out of an efficient Work of Art daughter. Very moderate birth with good weaning and yearling ratios. Top 3% of the breed for \$EN.



OCC Erica 730W — This Rear End 751R daughter is the dam of OCC Epitome 630E, a current herd sire that is stamping his calves with his stout and attractive phenotype. There are many impressive Epitome sons in the sale, including Lots 17, 41, 47, 57, 81, 83, 84, 86 and 96.



OCC Jamal 734J

Calved 04/04/21 20602899

D H D Traveler 6807

OCC Echelon 857E

Dixie Erica of C H 1019

OCC Paxton 730P

OCC Pollyanna 744Y

OCC Pollyanna 944H

Q A S Traveler 23-4

Bemindful Maid D H D 0807

PBC 707 1M F0203

Dixie Erica of C H 615

OCC Focus 813F

OCC Blackbird 736K

OCC Anchor 771A

OCC Pollyanna 979F

Production EPDs			
CED	BW	WW	YW
9	0.6	42	73

Maternal EPDs				\$Values
CEM	Milk	\$EN	\$W	
2	19	14	38	

Individual Birth Wt, Ratios, Fleshing Score			
BW	Weaning	Yearling	Fleshing
78	111	113	8.9

Jamal is a high performing Echelon son that's long bodied and thick. Exceptional weaning and yearling ratios. His dam is a Paxton daughter out of the Pollyanna 944H donor cow! Top 2% of the breed for \$EN and top 10% for DMI.



OCC Jove 757J

Calved 04/13/21 20605382

OCC Paxton 730P

OCC Epitome 630E

OCC Dixie Erica 730W

OCC Zodiac 655Z

OCC Pollyanna 753D

OCC Pollyanna 847A

OCC Focus 813F

OCC Blackbird 736K

OCC Rear End 751R

OCC Dixie Erica 776M

OCC Umax 820U

OCC Dixie Erica 628W

OCC Moderator 825M

OCC Pollyanna 944H

Production EPDs			
CED	BW	WW	YW
8	0.5	33	58

Maternal EPDs				\$Values
CEM	Milk	\$EN	\$W	
1	20	16	28	

Individual Birth Wt, Ratios, Fleshing Score			
BW	Weaning	Yearling	Fleshing
80	90	92	8.8

Jove is a thick, very sound Epitome son. His dam is a very moderate, good uddered Zodiac daughter. Top 1% for \$EN and top 30% for \$M.



This granddaughter of OCC Juanada 709V, the dam of Anchor 771A, displays the maternal power of the Juanada cow family.



OCC Java 739J

Calved 04/06/21 20602900

OCC Homer 650H

OCC Rear End 751R

FCC Revolution Rose 995N

OCC Paxton 730P

OCC Juanada 884C

OCC Juanada 845Z

OCC Focus 813F

OCC Dixie Erica 816B

OCC Joker 620J

OCC Revolution Rose 887H

OCC Focus 813F

OCC Blackbird 736K

OCC Homer 650H

OCC Juanada 735X

Production EPDs			
CED	BW	WW	YW
6	1	43	67

Maternal EPDs				\$Values
CEM	Milk	\$EN	\$W	
2	18	18	39	

Individual Birth Wt, Ratios, Fleshing Score			
BW	Weaning	Yearling	Fleshing
85	107	97	8.8

A Rear End son that's structurally correct, well balanced, with good muscling and depth. Dam is a stout Paxton daughter. He'll sire replacement females that will keep you in the cow business. Top 1% if the breed for \$EN and top 4% for \$M.



OCC Jasper 759J

Calved 04/14/21 20602901

OCC Alpha 700A

OCC Fortress 744F

OCC Dixie Erica 752A

OCC Paxton 730P

OCC Dixie Erica 694C

OCC Dixie Erica 803X

OCC X-tra Easy 708X

OCC Dixie Erica 806Y

OCC You Sleep 638Y

OCC Dixie Erica 710X

OCC Focus 813F

OCC Blackbird 736K

OCC Eureka 865E

OCC Dixie Erica 612H

Production EPDs			
CED	BW	WW	YW
3	2.6	46	82

Maternal EPDs				\$Values
CEM	Milk	\$EN	\$W	
-4	25	4	38	

Individual Birth Wt, Ratios, Fleshing Score			
BW	Weaning	Yearling	Fleshing
88	104	101	9.2

Here's a thick and attractive Fortress son. Fortress is a top performing sire that was the high selling bull in our 2020 sale. Dam is a big volume, easy fleshing Paxton daughter out of the great 803X donor cow. Top 10% for \$EN.



OCC Just In Time 766J

Calved 04/18/21 20602902

OCC Umax 820U

OCC Zodiac 655Z

OCC Dixie Erica 628W

OCC Echelon 857E

OCC Juanada 830A

OCC Juanada 826R

OCC Paxton 730P

OCC Dixie Erica 801M

OCC Practical 841P

Chloe Dixie Erica 7313

D H D Traveler 6807

Dixie Erica of C H 1019

D D A Fahren 21X

OCC Juanada 968G

Production EPDs			
CED	BW	WW	YW
9	-0.8	27	49

Maternal EPDs				\$Values
CEM	Milk	\$EN	\$W	
0	16	20	22	

Individual Birth Wt, Ratios, Fleshing Score			
BW	Weaning	Yearling	Fleshing
72	85	88	8.4

A good, low birth Zodiac son. His dam is a 10 year old Echelon daughter from the Juanada family that produced Jet Stream and Anchor 771A. Top 15% for BW, top 1% for \$EN.



OCC Jeez He's Good 778J

Calved 04/21/21 20602903

OCC Paxton 730P

OCC Accolade 825A

OCC Dixie Erica 771R

FEATURED LOT

OCC Linebred 661L

OCC Dixie Erica 654C

OCC Dixie Erica 828A

OCC Focus 813F

OCC Blackbird 736K

OCC Missing Link 830M

OCC Dixie Erica 776M

OCC Homer 650H

OCC Dixie Erica 686J

OCC Paxton 730P

OCC Dixie Erica 771R

Production EPDs			
CED	BW	WW	YW
8	1.2	49	86

Maternal EPDs				\$Values	
CEM	Milk	\$EN	\$W		
-1	20	0	40		

Individual Birth Wt, Ratios, Fleshing Score			
BW	Weaning	Yearling	Fleshing
79	99	105	8.3

A rugged, big footed Accolade son with excellent growth and performance. Wide base and top. Linebred to the 771R cow. Top 15% for \$EN.



OCC Jude 785J

Calved 04/24/21 20602904

OCC Emblazon 854E

OCC Jet Stream 825J

OCC Juanada 968G

OCC Eureka 865E

OCC Dixie Erica 633D

OCC Dixie Erica 803Y

D H D Traveler 6807

Dixie Erica of C H 1019

OCC Eureka 865E

OCC Juanada 774A

OCC Backstop 888B

Blackbird of R R 1204

OCC Paxton 730P

OCC Dixie Erica 605K

Production EPDs			
CED	BW	WW	YW
10	-0.1	33	54

Maternal EPDs				\$Values	
CEM	Milk	\$EN	\$W		
2	22	14	32		

Individual Birth Wt, Ratios, Fleshing Score			
BW	Weaning	Yearling	Fleshing
78	94	97	9

Jude is a wide-based, thick topped Jet Stream son. His dam is a very moderate, easy fleshing Eureka daughter with a perfect udder. Top 25% of the breed for BW, top 2% for \$EN, and top 25% for \$M.



OCC Just The One 797J

Calved 04/28/21 20602906

OCC Zodiac 655Z

OCC Felder 805F

OCC Dixie Erica 730W

OCC Great Plains 943G

OCC Dixie Erica 624E

OCC Dixie Erica 694C

OCC Umax 820U

OCC Dixie Erica 628W

OCC Rear End 751R

OCC Dixie Erica 776M

N Bar Emulation EXT

Dixie Erica of C H 1019

OCC Paxton 730P

OCC Dixie Erica 803X

Production EPDs			
CED	BW	WW	YW
5	1.4	43	75

Maternal EPDs				\$Values	
CEM	Milk	\$EN	\$W		
0	23	8	38		

Individual Birth Wt, Ratios, Fleshing Score			
BW	Weaning	Yearling	Fleshing
82	106	109	8.6

A son of Felder 805F, a Zodiac son that's doing a nice job for us. Dam is a productive, good uddered Great Plains daughter! Moderate birth with excellent weaning and yearling performance. Top 5% for \$EN and top 15% for \$M.



OCC Jeronimo 781J

Calved 04/22/21 20602916

OCC Work of Art 766W

OCC Best Yet 766B

OCC Dixie Erica 817Y

OCC Sentinel 714S

OCC Pollyanna 805C

OCC Pollyanna 744Y

OCC Great Plains 943G

OCC Dixie Erica 662J

OCC Eureka 865E

OCC Dixie Erica 612H

OCC Focus 813F

OCC Blackcap 804M

OCC Paxton 730P

OCC Pollyanna 944H

Production EPDs			
CED	BW	WW	YW
0	3.1	46	85

Maternal EPDs				\$Values	
CEM	Milk	\$EN	\$W		
-3	22	5	33		

Individual Birth Wt, Ratios, Fleshing Score			
BW	Weaning	Yearling	Fleshing
86	100	99	8.5

Another powerful Best Yet son. His dam is a smooth-made, slick haired Sentinel daughter with ideal udder quality. Top 10% for \$EN.



OCC Just Now 788J

Calved 04/01/21 20602905

OCC Alpha 700A

OCC Fortress 744F

OCC Dixie Erica 752A

OCC Work of Art 766W

OCC Juanada 808C

OCC Juanada 641Z

OCC X-tra Easy 708X

OCC Dixie Erica 806Y

OCC You Sleep 638Y

OCC Dixie Erica 710X

OCC Great Plains 943G

OCC Dixie Erica 662J

OCC Moderator 825M

OCC Juanada 827X

Production EPDs			
CED	BW	WW	YW
6	1.9	46	85

Maternal EPDs				\$Values	
CEM	Milk	\$EN	\$W		
1	25	-1	41		

Individual Birth Wt, Ratios, Fleshing Score			
BW	Weaning	Yearling	Fleshing
78	105	109	8.8

Just Now is another impressive Fortress son. Growth and performance here. Moderate birth with excellent weaning and yearling ratios. Top 15% for \$EN.



OCC Dixie Erica 827A — This Paxton 730P daughter is the dam of OCC Do It All 656D and is also a maternal sister to OCC Accolade 825A. She's the granddam of the heifers that sell as Lots 140 and 186.



OCC Justify 812J

Calved 05/06/21 20602917

OCC Echelon 857E
OCC Front Range 827F
OCC Blackcap 906B

OCC Atlas 664A
OCC Dixie Erica 627G
OCC Dixie Erica 765E

D H D Traveler 6807
Dixie Erica of C H 1019
OCC Transformation 680T
OCC Blackcap 804M
OCC Transformation 680T
Chloe Dixie Erica 7313
OCC Wholesome 667W
OCC Dixie Erica 640Y

Production EPDs			
CED	BW	WW	YW
9	0	41	71

Maternal EPDs				\$Values
CEM	Milk	\$EN	\$W	
2	21	15	37	

Individual Birth Wt, Ratios, Fleshing Score			
BW	Weaning	Yearling	Fleshing
75	108	108	8.5

Justify is a low-birth bull with impressive weaning and yearling performance.

He's double bred to Transformation 680T. Dam is a good, young Atlas daughter. Top 2% for \$EN and top 20% for \$M.



OCC Just Power 814J

Calved 05/09/21 20602907

OCC Paxton 730P
OCC Epitome 630E
OCC Dixie Erica 730W

OCC Remarkabull 937R
OCC Juanada 722E
OCC Juanada 655U

OCC Focus 813F
OCC Blackbird 736K
OCC Rear End 751R
OCC Dixie Erica 776M
OCC Mitchell 831M
OCC Dixie Erica 801M
OCC Paxton 730P
OCC Juanada 664R

Production EPDs			
CED	BW	WW	YW
7	1.3	41	73

Maternal EPDs				\$Values
CEM	Milk	\$EN	\$W	
1	22	13	35	

Individual Birth Wt, Ratios, Fleshing Score			
BW	Weaning	Yearling	Fleshing
88	101	101	8.8

Just Power is an Epitome son loaded with muscle. Dam is a high producing, good uddered Remarkabull daughter.

Maternal great granddam, 664R, is a twin sister to the great Juanada 663R cow! Top 3% for \$EN.



OCC Juanada 663R – Pictured at 13 years of age, this Emblazon daughter remains in the herd at 18. The longevity of this cow family has been astounding. She's the dam of Lot 152 and maternal granddam of Lot 160.



OCC Jimbo 813J

Calved 05/06/21 20602918

OCC Work of Art 766W
OCC Best Yet 766B
OCC Dixie Erica 817Y
FEATURED LOT
OCC Jet Stream 825J
OCC Juanada 819B
OCC Juanada 570W

OCC Great Plains 943G
OCC Dixie Erica 662J
OCC Eureka 865E
OCC Dixie Erica 612H
OCC Emblazon 854E
OCC Juanada 968G
OCC Practical 841P
OCC Juanada 826R

Production EPDs			
CED	BW	WW	YW
2	2.2	36	66

Maternal EPDs				\$Values
CEM	Milk	\$EN	\$W	
-4	23	11	30	

Individual Birth Wt, Ratios, Fleshing Score			
BW	Weaning	Yearling	Fleshing
85	93	95	8.8

A thick and stout Best Yet son.

His dam is an easy fleshing Jet Stream daughter. She's also linebred to the Juanada family that produced Anchor and Jet Stream. Top 3% for \$EN.



OCC Just Like That 824J

Calved 05/14/21 20602920

OCC Umax 820U
OCC Zodiac 655Z
OCC Dixie Erica 628W
OCC Wholesome 667W
OCC Dixie Erica 745A
OCC Dixie Erica 714X

OCC Paxton 730P
OCC Dixie Erica 801M
OCC Practical 841P
Chloe Dixie Erica 7313
OCC Practical 841P
OCC Juanada 664R
GCC Hunter 649U
OCC Dixie Erica 892U

Production EPDs			
CED	BW	WW	YW
5	1.4	37	66

Maternal EPDs				\$Values
CEM	Milk	\$EN	\$W	
-3	18	15	27	

Individual Birth Wt, Ratios, Fleshing Score			
BW	Weaning	Yearling	Fleshing
92	103	101	8.9

Just Like That is a full brother to "Good As There Is", a top selling bull in our 2021

production sale. Moderate frame with loads of muscle. Top 2% for \$EN.



OCC Jaden 832J

Calved 05/19/21 20605383

OCC Jet Stream 825J
OCC Double Impact 722D
OCC Dixie Erica 771R
OCC Alpha 700A
OCC Dixie Erica 752F
OCC Dixie Erica 828A

OCC Emblazon 854E
OCC Juanada 968G
OCC Missing Link 830M
OCC Dixie Erica 776M
OCC X-tra Easy 708X
OCC Dixie Erica 806Y
OCC Paxton 730P
OCC Dixie Erica 771R

Production EPDs			
CED	BW	WW	YW
6	1.3	41	71

Maternal EPDs				\$Values
CEM	Milk	\$EN	\$W	
0	22	8	36	

Individual Birth Wt, Ratios, Fleshing Score			
BW	Weaning	Yearling	Fleshing
76	100	100	8.2

Jaden exhibits tremendous growth and performance.

Dam is a smooth-made, slick haired Alpha daughter. Maternal granddam is a full sister to the great 827A cow. Top 5% for \$EN.



OCC Just The Ticket 834J

Calved 05/23/21 20602919

OCC Work of Art 766W
OCC Best Yet 766B
 OCC Dixie Erica 817Y

OCC Rear End 751R
OCC Pollyanna 611B
 OCC Pollyanna 944H

OCC Great Plains 943G
 OCC Dixie Erica 662J
 OCC Eureka 865E
 OCC Dixie Erica 612H
 OCC Homer 650H
 FCC Revolution Rose 995N
 OCC Anchor 771A
 OCC Pollyanna 979F

Production EPDs			
CED	BW	WW	YW
1	3	45	79

Maternal EPDs			\$Values
CEM	Milk	\$EN	\$W
-1	22	6	35

Individual Birth Wt, Ratios, Fleshing Score			
BW	Weaning	Yearling	Fleshing
88	106	102	8.6

Just The Ticket is a wide-based, big topped bull with excellent weaning and yearling ratios. Use on cows for superior calf performance. His dam is a powerful Rear End daughter from the Pollyanna 944H family. Top 10% of the breed for \$EN.

CM Angus Bulls

Lots 61-62 are consigned by
 Clyde Mattson, Manhattan, Kan.

For more information,
 call 785-632-0763 or
 email clydem2@yahoo.com.



CM Julian 7108J

Calved 05/12/21 20608867

OCC Unbelievable 851U
CM Garth 7102G
 PCC Melody Victoria Y1041

OCC Paxton 730P
CM Merle 674D
 CM Merle 802U

OCC Practical 841P
 OCC Pollyanna 944H
 PCC OH Pledge 2357P
 BAX Melody Victoria 224-656
 OCC Focus 813F
 OCC Blackbird 736K
 OCC Homer 650H
 CM Merle 601S

Production EPDs			
CED	BW	WW	YW
13	-1.7	34	56

Maternal EPDs			\$Values
CEM	Milk	\$EN	\$W
4	19	16	32

Individual Birth Wt, Ratios, Fleshing Score			
BW	Weaning	Yearling	Fleshing
64	98	100	8.6

A low birth bull with 3 generations of calving ease ancestry. His dam is a smooth-made Paxton daughter with a near perfect udder. Top 1% of the breed for \$EN.



OCC Confidence 820C — A thick and powerful son of Big Time 746Z out of the legendary Dixie Erica 628W, making him a maternal brother to Zodiac 655Z and Blueprint 632B. We have used Confidence 820C heavily in our fall calving herd. Two daughters sell in this sale as Lots 167 and 177.



CM Jovan 7101J

Calved 3/19/21 20608866

OCC Homer 650H
OCC Rear End 751R
 FCC Revolution Rose 995N

HAR Pinebank 443 202
DDA Sandy 541
 DDA Sandy 2105

OCC Focus 813F
 OCC Dixie Erica 816B
 OCC Joker 620J
 OCC Revolution Rose 887H
 Pinebank Waigroup 41/97
 DDA Stella 443
 Hyland BC 0668
 DDA Sandy 931

Production EPDs			
CED	BW	WW	YW
4	1.3	43	67

Maternal EPDs			\$Values
CEM	Milk	\$EN	\$W
5	21	15	42

Individual Birth Wt, Ratios, Fleshing Score			
BW	Weaning	Yearling	Fleshing
76	112	108	8.2

This Rear End son is thick, stout, and posts top weaning and yearling ratios. His dam brings outcross but complementary grass-based genetics to the table. Top 2% of the breed for \$EN.



The dam of Lot 61 with her 2020 bull calf that is a full brother to CM Jovan 7101J. This cow has produced several sons by Rear End 751R and they have all been good and stout.



OCC Journey 692J

Calved 03/25/21 4596117 Red Angus

PCC Colorado Hobo
OCC No Doubt 622N
OCC Vanessa 601L

Redhill P707 Nebula 153Z
OCC Vanessa 601E
OCC Vanessa 605C

BUF CRK Hobo 1961
RKJ Hero 433 804
OCC Honesty 962H
Leachman Vanesa 5900
Beckton Nebula P P707
BUF CRK Redpride P154
OCC Red Grazer 610Z
OCC Vanessa 829S

Production EPDs			
CED	BW	WW	YW
13	-3.5	45	76

Maternal EPDs			\$Values
CEM	Milk	HB	ProS
6	22	54	85

Individual Birth Wt, Ratios, Fleshing Score			
BW	Weaning	Yearling	Fleshing
68	99	102	8.5

Journey is a thick and attractive Red Angus bull sired by No Doubt 622N. He has a low birth weight EPD but also provides good weaning and yearling growth. His dam is a very moderate, big volume daughter of Nebula 153Z with great udder quality.



OCC Jonas 791J

Calved 03/26/21 4596125 Red Angus

Redhill P707 Nebula 153Z
OCC Daylight 848D
OCC Vanessa 902B

OCC Homer 650H
OCC Miss 627E
OCC Miss 826C

Beckton Nebula P P707
BUF CRK Redpride P154
Red Hill B571 Julian 84S
OCC Vanessa 822P
OCC Focus 813F
OCC Dixie Erica 816B
OCC Wholesome 667W
OCC Miss 782Y

Production EPDs			
CED	BW	WW	YW
15	-2.6	53	82

Maternal EPDs			\$Values
CEM	Milk	HB	ProS
5	22	82	99

Individual Birth Wt, Ratios, Fleshing Score			
BW	Weaning	Yearling	Fleshing
68	104	106	8

Jonas is a black-hided Red Angus bull sired by OCC Daylight 848D. He carries the red gene. He combines low birth with excellent weaning and yearling performance. Note that his dam is a Homer 650H daughter! He's in the top 8% of the breed for HB, a good selection tool for cow herd traits.



OCC Vanessa 902B — the dam of OCC Daylight 848D, sire of Lots 65 and 66,



OCC Justify 763J

Calved 04/17/21 4596109 Red Angus

Mushrush Triton A330
Calvo Titan 64E
452C

FEATURED LOT

OCC Red Grazer 610Z
OCC Vanessa 607C
OCC Vanessa 829S

Beckton Nebula P P707
Mushrush Prairie Madam LN U2
OCC Easy Red
Calvo Dana 101A
BB 6021 Grazer 6242
OCC Vanessa 829S
PCC Colorado Hobo
OCC Vanessa 768P

Production EPDs			
CED	BW	WW	YW
13	-2.9	53	83

Maternal EPDs			\$Values
CEM	Milk	HB	ProS
5	28	59	82

Individual Birth Wt, Ratios, Fleshing Score			
BW	Weaning	Yearling	Fleshing
70	99	96	8

Justify is stout and muscular. He's a full brother to OCC Home Run 650H that sold in our 2022 sale. His dam is a daughter of Red Grazer 610Z, a great cow efficiency sire. Red Grazer is in the top 15% of the breed for HB (Herd Builder), a good selection tool for cow herd traits.



OCC-PCL Juggernaut 64J

Calved 03/12/21 4615275 Red Angus

Redhill P707 Nebula 153Z
OCC Daylight 848D
OCC Vanessa 902B

SR Oscarline 6106
SR Miss 9092
SR Miss BBLink 6171

Beckton Nebula P P707
BUF CRK Redpride P154
Red Hill B571 Julian 84S
OCC Vanessa 822P
SR Ultimatebred 322A
RF Jessa J395-0297-5075
SR BB Oscar 1100
SR Miss Millie 329A

Production EPDs			
CED	BW	WW	YW
13	-2.1	59	90

Maternal EPDs			\$Values
CEM	Milk	HB	ProS
6	26	86	105

Individual Birth Wt, Ratios, Fleshing Score			
BW	Weaning	Yearling	Fleshing
64	115	96	8

Juggernaut is another son of Daylight 848D that features calving ease combined with exceptional weaning and yearling performance. He's in the top 6% of the breed for Herd Builder (HB). He'll sire superior replacement females. Consigned by Peats Creek Livestock, Palmer, Kansas.



OCC Daylight 848D — The Red Angus sire of Lot 65 and 66.

Angus II[®] Bulls

Developed exclusively at Ohlde Cattle Co., Angus IIs are typically at least 7/8 Angus and offer more consistent fertility, performance and milk production than the registered cattle but with the same or improved calving ease, muscle, carcass quality and fleshing ability.



OCC Zar 300J

Calved 3/5/21 Angus II

OCC Homer 650H
OCC Zar 869Z
OCC Dixie Erica 642U

OCC Zebron 871Z
OCC Miss 386G
OCC Miss 314C

OCC Focus 813F
OCC Dixie Erica 816B
OCC Paxton 730P
OCC Dixie Erica 801M
OCC Rear End 751R
OCC Pollyanna 944H
OCC Linebred 661L
OCC Miss Rear End 414Z

Production EPDs			
BW	WW	Milk	YW
-1.8	40	19	65

Individual Birth Wt, Ratios, Fleshing Score			
BW	Weaning	Yearling	Fleshing
57	98	97	9

This Zar 869Z son is thick, moderate framed, and very low birth. Double bred to Homer, he'll make a great bull to use on heifers.



OCC Atlas 301J

Calved 3/6/21 Angus II

OCC Transformation 680T
OCC Atlas 664A
Chloe Dixie Erica 7313

OCC Deacon 615D
OCC Miss 379G
OCC Miss 387B

OCC Focus 813F
OCC Dixie Erica 603N
Papa Forte 1921
OCC Dixie Erica 826J
OCC Realist 641R
OCC Blackcap 804M
OCC No Problems 52N
OCC Miss 413Z

Production EPDs			
BW	WW	Milk	YW
-1.5	39	20	70

Individual Birth Wt, Ratios, Fleshing Score			
BW	Weaning	Yearling	Fleshing
68	101	105	8.5

An Atlas son that is structurally correct with good feet and legs. Heavy muscled with fleshing ability. Safe for heifers and he is good!



OCC Dakota 304J

Calved 3/10/21 Angus II

OCC Zodiac 655Z
OCC Dakota 687D
OCC Dixie Erica 839A

OCC Paxton 300X
OCC Miss 343D
OCC Miss 480Z

OCC Umax 820U
OCC Dixie Erica 628W
OCC Paxton 730P
OCC Dixie Erica 637S
OCC Paxton 730P
OCC Miss Emblazon 512L
OCC Jet Stream 825J
OCC Miss Anchor 462F

Production EPDs			
BW	WW	Milk	YW
1.1	38	18	64

Individual Birth Wt, Ratios, Fleshing Score			
BW	Weaning	Yearling	Fleshing
84	97	93	8.5

Here is a double bred Paxton. He's massive - deep sided and thick from end to end.



OCC Dakota 305J

Calved 3/12/21 Angus II

OCC Zodiac 655Z
OCC Dakota 687D
OCC Dixie Erica 839A

OCC Eureka 482Z
OCC Miss 351D
OCC Miss 348Y

OCC Umax 820U
OCC Dixie Erica 628W
OCC Paxton 730P
OCC Dixie Erica 637S
OCC Eureka 865E
OCC Miss Emblazon 512L
OCC Umax 820U
OCC Miss 597R

Production EPDs			
BW	WW	Milk	YW
0.8	42	18	72

Individual Birth Wt, Ratios, Fleshing Score			
BW	Weaning	Yearling	Fleshing
80	108	109	8

A Dakota 687D son that is thick and wide. Moderate birth combined with excellent weaning and yearling performance.



OCC Atlas 314J

Calved 3/14/21 15/16 Angus II, 1/16 Fleckvieh

OCC Transformation 680T
OCC Atlas 664A
Chloe Dixie Erica 7313

OCC Gulf Stream 183Z
OCC Miss 361G
OCC Miss 321D

OCC Focus 813F
OCC Dixie Erica 603N
Papa Forte 1921
OCC Dixie Erica 826J
OCC Jet Stream 939W
OCC Toni 134T
OCC Eureka 482Z
OCC Miss Homer 321Y

Production EPDs			
BW	WW	Milk	YW
-0.8	39	19	67

Individual Birth Wt, Ratios, Fleshing Score			
BW	Weaning	Yearling	Fleshing
66	106	101	8

A big, heavy muscled son of Atlas. Atlas sons consistently have low birth weights and grow very well. Good bone, feet, and legs.



OCC Atlas 315J

Calved 3/14/21 Angus II

OCC Transformation 680T

OCC Atlas 664A

Chloe Dixie Erica 7313

OCC Double Take 706D

OCC Miss 306G

OCC Miss 334B

OCC Focus 813F

OCC Dixie Erica 603N

Papa Forte 1921

OCC Dixie Erica 826J

OCC Zodiac 655Z

OCC Dixie Erica 633A

OCC Thumper 819T

OCC Miss 302U

Production EPDs			
BW	WW	Milk	YW
-0.9	38	20	65

Individual Birth Wt, Ratios, Fleshing Score			
BW	Weaning	Yearling	Fleshing
67	97	103	8.5

Another low birth Atlas son out of a top producing cow family noted for longevity.



A typical Angus II cow.



OCC Fanfare 320J

Calved 3/16/21 Angus II

OCC Paxton 730P

OCC Fanfare 323F

OCC Flo 404R

OCC No Problems 52N

OCC Miss 303D

OCC Miss 369B

OCC Focus 813F

OCC Blackbird 736K

OCC Eureka 865E

OCC Miss Anchor 488E

OCC Focus 813F

OCC Dixie Erica 816B

OCC Legend 616L

OCC Valarie 452L

Production EPDs			
BW	WW	Milk	YW
0.8	36	19	64

Individual Birth Wt, Ratios, Fleshing Score			
BW	Weaning	Yearling	Fleshing
75	101	106	8.5

Lot 73 is sired by Fanfare 323F, a Paxton son that's a full brother to Extra Power 307E. Very moderate birth with good weaning and yearling performance.



OCC Double Impact 322J

Calved 3/16/21 Angus II

OCC Jet Stream 825J

OCC Double Impact 722D

OCC Dixie Erica 771R

OCC You're Exact 763Y

OCC Miss 311F

OCC Miss 425B

OCC Emblazon 854E

OCC Juanada 968G

OCC Missing Link 830M

OCC Dixie Erica 776M

OCC Paxton 730P

OCC Pollyanna 944H

OCC Sleep In 7002Z CM

OCC Miss 429Z

Production EPDs			
BW	WW	Milk	YW
0.5	38	18	70

Individual Birth Wt, Ratios, Fleshing Score			
BW	Weaning	Yearling	Fleshing
68	107	93	8

A stout son of Double Impact with great weaning performance. He's double bred to Headliner 661H. This pedigree combines the Pollyanna, Dixie Erica, and Juanada cow families.



OCC Zar 326J

Calved 3/17/21 Angus II

OCC Homer 650H

OCC Zar 869Z

OCC Dixie Erica 642U

OCC Dakota 687D

OCC Miss 385G

OCC Miss 378C

OCC Focus 813F

OCC Dixie Erica 816B

OCC Paxton 730P

OCC Dixie Erica 801M

OCC Zodiac 655Z

OCC Dixie Erica 839A

OCC Zuk 681Z

OCC Miss Mitchell 357U

Production EPDs			
BW	WW	Milk	YW
-1.2	35	18	62

Individual Birth Wt, Ratios, Fleshing Score			
BW	Weaning	Yearling	Fleshing
67	101	101	8.5

A smaller framed Zar son that will make a good heifer bull. He is well balanced and stylish.



OCC Miss Prestige 322X — This OCC Prestige 672P daughter is the dam of Lot 89.



OCC Dixie Erica 816B — Emblazon's sister and dam of OCC herd sires Homer, Picture Perfect, No Problems and Jupiter.



OCC Dakota 334J

Calved 3/20/21 Angus II

OCC Zodiac 655Z
OCC Dakota 687D
OCC Dixie Erica 839A

OCC Zuk 681Z
OCC Miss 378C
OCC Miss Mitchell 357U

OCC Umax 820U
OCC Dixie Erica 628W
OCC Paxton 730P
OCC Dixie Erica 637S
OCC Eureka 865E
OCC Dixie Erica 645U
OCC Mitchell 831M
OCC Valarie 428H

Production EPDs			
BW	WW	Milk	YW
0.8	38	18	65

Individual Birth Wt, Ratios, Fleshing Score			
BW	Weaning	Yearling	Fleshing
84	91	104	8.5

Here is a moderate framed son of Dakota. Shows good muscling and fleshing ability. His dam is a top producing 7 year old cow.



OCC Equal 337J

Calved 3/20/21 Angus II

OCC Moderator 825M
OCC Equal 685E
OCC Pollyanna 638U

OCC Little Big Man 639Z
OCC Miss 310D
OCC Miss 18N

OCC Headliner 661H
OCC Dixie Erica 845K
OCC Great Plains 943G
OCC Pollyanna 944H
OCC Paxton 730P
OCC Dixie Erica 605K
OCC Ali 2nd 385J
OCC Miss 788

Production EPDs			
BW	WW	Milk	YW
1.1	35	20	62

Individual Birth Wt, Ratios, Fleshing Score			
BW	Weaning	Yearling	Fleshing
84	104	105	7.5

A smaller framed son of Equal with top weaning and yearling performance. Good feet and legs. Muscle definition is a plus on this bull.



OCC Accolade 329J

Calved 3/18/21 Angus II

OCC Paxton 730P
OCC Accolade 825A
OCC Dixie Erica 771R

OCC Zodiac 655Z
OCC Miss 370C
OCC Miss 363Z

OCC Focus 813F
OCC Blackbird 736K
OCC Missing Link 830M
OCC Dixie Erica 776M
OCC Umax 820U
OCC Dixie Erica 628W
OCC Paxton's Fleck 154W
OCC Miss 312W

Production EPDs			
BW	WW	Milk	YW
1.2	40	19	76

Individual Birth Wt, Ratios, Fleshing Score			
BW	Weaning	Yearling	Fleshing
75	90	100	7.5

This bull is very balanced and displays muscle from any angle. He is thick, deep and wide. Moves out well and structurally correct. Triple bred to Paxton.



OCC Fanfare 336J

Calved 3/20/21 Angus II

OCC Paxton 730P
OCC Fanfare 323F
OCC Flo 404R

OCC Zodiac 655Z
OCC Miss 432C
OCC Miss S1

OCC Focus 813F
OCC Blackbird 736K
OCC Eureka 865E
OCC Miss Anchor 488E
OCC Umax 820U
OCC Dixie Erica 628W
OCC Emblazon 854E son
OCC Miss M71

Production EPDs			
BW	WW	Milk	YW
0.6	40	20	72

Individual Birth Wt, Ratios, Fleshing Score			
BW	Weaning	Yearling	Fleshing
70	112	111	8

Lot 78 is a thick, well balanced son of Fanfare. Note his very moderate birth combined with outstanding weaning and yearling performance.



OCC Dakota 341J

Calved 3/21/21 Angus II

OCC Zodiac 655Z
OCC Dakota 687D
OCC Dixie Erica 839A

FEATURED LOT
OCC Little Big Man 639Z
OCC Miss 312D
OCC Valarie 312Y

OCC Umax 820U
OCC Dixie Erica 628W
OCC Paxton 730P
OCC Dixie Erica 637S
OCC Paxton 730P
OCC Dixie Erica 605K
Lavenham Minotaur
OCC Valarie 399H

Production EPDs			
BW	WW	Milk	YW
1.5	42	20	75

Individual Birth Wt, Ratios, Fleshing Score			
BW	Weaning	Yearling	Fleshing
90	111	119	8

A long bodied Dakota son with great performance. Muscular down his top and deep sided. His dam is a heavy milking, perfect uddered cow.



OCC Epitome 342J

Calved 3/21/21 Angus II

OCC Paxton 730P
OCC Epitome 630E
OCC Dixie Erica 730W

OCC Zebron 871Z
OCC Miss 315E
OCC Miss 309A

OCC Focus 813F
OCC Blackbird 736K
OCC Rear End 751R
OCC Dixie Erica 776M
OCC Rear End 751R
OCC Pollyanna 944H
OCC No Problems 52N
OCC Miss 370Y

Production EPDs			
BW	WW	Milk	YW
0.5	40	19	70

Individual Birth Wt, Ratios, Fleshing Score			
BW	Weaning	Yearling	Fleshing
58	91	92	8.5

A low birth son of Epitome displaying massive volume and muscle. He is wide based and thick topped. This bull is good!



OCC Linebred 344J

Calved 3/22/21 Angus II

OCC Homer 650H
OCC Linebred 661L
OCC Dixie Erica 686J

OCC You're Exact 763Y
OCC Miss 332G
OCC Miss 444W

OCC Focus 813F
OCC Dixie Erica 816B
OCC Emblazon 854E
OCC Dixie Erica 816B
OCC Paxton 730P
OCC Pollyanna 944H
OCC Prophet 666P
OCC Flo 595R

Production EPDs			
BW	WW	Milk	YW
-0.2	38	18	70

Individual Birth Wt, Ratios, Fleshing Score			
BW	Weaning	Yearling	Fleshing
76	107	110	8

This Linebred 661L son is a good solid bull with excellent weaning and yearling performance. He's moderate in size with good muscling.



OCC Epitome 346J

Calved 3/22/21 Angus II

OCC Paxton 730P
OCC Epitome 630E
OCC Dixie Erica 730W

OCC Upstart 961U
OCC Miss 439Y
OCC Miss 436W

OCC Focus 813F
OCC Blackbird 736K
OCC Rear End 751R
OCC Dixie Erica 776M
OCC New Life 904N
OCC Dixie Erica 637S
OCC Mitchell 831M
OCC Miss Anchor 321L

Production EPDs			
BW	WW	Milk	YW
0.5	42	20	74

Individual Birth Wt, Ratios, Fleshing Score			
BW	Weaning	Yearling	Fleshing
80	99	103	8.5

This Epitome son exhibits tremendous muscle mass. He's wide based and thick topped. His dam is a big volume, easy fleshing 12 year old cow.



OCC Epitome 347J

Calved 3/22/21 Angus II

OCC Paxton 730P
OCC Epitome 630E
OCC Dixie Erica 730W

OCC Upfront 873U
OCC Miss 319Z
OCC Miss 453W

OCC Focus 813F
OCC Blackbird 736K
OCC Rear End 751R
OCC Dixie Erica 776M
OCC Great Plains 943G
OCC Dixie Erica 661J
OCC Sentinel 714S
OCC Miss 416T

Production EPDs			
BW	WW	Milk	YW
0.4	40	20	75

Individual Birth Wt, Ratios, Fleshing Score			
BW	Weaning	Yearling	Fleshing
60	111	107	8

Lot 84 is a low birth son of Epitome with terrific performance ratios. Look at his muscle mass. He is well balanced and deep bodied. Will sire great daughters.



OCC Miss 311Z — An Angus II cow sired by OCC Rear End 751R. The dam of Lots 168 and 183.



OCC Blueprint 348J

Calved 3/22/21 Angus II

OCC Moderator 825M
OCC Blueprint 632B
OCC Dixie Erica 628W

OCC Atlas 664A
OCC Miss 303G
OCC Miss 324E

OCC Headliner 661H
OCC Dixie Erica 845K
OCC Practical 841P
Chloe Dixie Erica 7313
OCC Transformation 680T
Chloe Dixie Erica 7313
OCC X-tra Easy 708X
OCC Miss 446B

Production EPDs			
BW	WW	Milk	YW
-1.2	38	19	68

Individual Birth Wt, Ratios, Fleshing Score			
BW	Weaning	Yearling	Fleshing
59	104	100	8

A low birth son of Blueprint that will sire calving ease and beautifully efficient daughters. His pedigree includes the calving ease sires Atlas and X-tra Easy.



OCC Epitome 355J

Calved 3/26/21 Angus II

CC Paxton 730P

OCC Epitome 630E

OCC Dixie Erica 730W

FEATURED
LOT

OCC Umax 820U

OCC Miss 348Y

OCC Flo 597R

OCC Focus 813F

OCC Blackbird 736K

OCC Rear End 751R

OCC Dixie Erica 776M

OCC Paxton 730P

OCC Dixie Erica 801M

Troycastle Ali 2

OCC Flo 513U

Production EPDs			
BW	WW	Milk	YW
1.1	45	20	78

Individual Birth Wt, Ratios, Fleshing Score			
BW	Weaning	Yearling	Fleshing
82	124	114	7.5

Another heavy muscled Epitome son with incredible weaning and yearling performance. He's wide based, big hiped, and thick topped. His paternal granddam, 730W, is a donor in our ET program.



OCC Extra Power 366J

Calved 3/29/21 Angus II

OCC Paxton 730P

OCC Extra Power 307E

OCC Flo 404R

OCC Paxton 300X

OCC Miss 337D

OCC Miss 363Z

OCC Focus 813F

OCC Blackbird 736K

OCC Eureka 865E

OCC Miss Anchor 488E

OCC Paxton 730P

OCC Miss Emblazon 512L

OCC Paxton's Fleck 154W

OCC Miss 312W

Production EPDs			
BW	WW	Milk	YW
0.5	44	19	75

Individual Birth Wt, Ratios, Fleshing Score			
BW	Weaning	Yearling	Fleshing
70	92	97	8.5

A solid Extra Power son out of a deep bodied, easy fleshing dam. He's triple bred to Paxton.



OCC Atlas 370J

Calved 3/30/21 Angus II

OCC Transformation 680T

OCC Atlas 664A

Chloe Dixie Erica 7313

OCC Linebred 661L

OCC Miss 317G

OCC Miss 631E

OCC Focus 813F

OCC Dixie Erica 603N

Papa Forte 1921

OCC Dixie Erica 826J

OCC Homer 650H

OCC Dixie Erica 686J

OCC Echelon 857E

OCC Miss 605Y

Production EPDs			
BW	WW	Milk	YW
-2.2	38	19	67

Individual Birth Wt, Ratios, Fleshing Score			
BW	Weaning	Yearling	Fleshing
56	109	105	8

This low birth Atlas son features a pedigree with 3 generations of low birth ancestry. He'd be excellent for use on heifers. Note his great weaning and yearling data also.



OCC Extra Power 374J

Calved 3/30/21 Angus II

OCC Paxton 730P

OCC Extra Power 307E

OCC Flo 404R

OCC Prestige 672P

OCC Miss 322X

OCC Miss Eureka 522N

OCC Focus 813F

OCC Blackbird 736K

OCC Eureka 865E

OCC Miss Anchor 488E

OCC Headliner 661H

OCC Dixie Erica 816B

OCC Eureka 865E

OCC Miss Anchor 462F

Production EPDs			
BW	WW	Milk	YW
1.2	42	21	76

Individual Birth Wt, Ratios, Fleshing Score			
BW	Weaning	Yearling	Fleshing
85	107	106	9

A thick and stout Extra Power 307E son with outstanding weaning and yearling performance. His dam is the powerful 322X cow sired by Prestige 672P.



OCC You're Exact 377J

Calved 4/1/21 Angus II

OCC Paxton 730P

OCC You're Exact 763Y

OCC Pollyanna 944H

OCC X-tra Easy 708X

OCC Miss 324E

OCC Miss 446B

OCC Focus 813F

OCC Blackbird 736K

OCC Anchor 771A

OCC Pollyanna 979F

OCC No Problems 52N

OCC Dixie Erica 678T

OCC X-factor 677X

OCC Miss 552N

Production EPDs			
BW	WW	Milk	YW
-0.5	36	18	68

Individual Birth Wt, Ratios, Fleshing Score			
BW	Weaning	Yearling	Fleshing
68	92	101	8.5

A low birth You're Exact 763Y son. Moderate frame with a wide base, thick top and deep flank. He is structurally sound and eye catching.



OCC Power Bull 383J

Calved 4/2/21 3/4 Angus II, 1/4 HP

BTF 4 3119 ET

OCC Power Baldy 063W

OCC Valarie 452L

OCC Echelon 857E

OCC Miss 103B

OCC Miss 343Z

NT Plato Rupert 4

NT Austina 338

OCC Joker 620J

OCC Valarie 394H

D H D Traveler 6807

Dixie Erica of C H 1019

OCC Rear End 751R

OCC Miss 310S

Production EPDs			
BW	WW	Milk	YW
1.7	38	18	68

Individual Birth Wt, Ratios, Fleshing Score			
BW	Weaning	Yearling	Fleshing
87	91	95	8

Lot 91 is a solid black bull that's 3/4 Angus II and 1/4 Polled Hereford. Average frame and deep bodied, thick topped, and wide based. His dam is a perfect uddered Echelon daughter.



OCC Double Impact 386J

Calved 4/4/21

Angus II

OCC Jet Stream 825J

OCC Double Impact 722D

OCC Dixie Erica 771R

OCC Accolade 825A

OCC Miss 355F

OCC Miss 371B

OCC Emblazon 854E

OCC Juanada 968G

OCC Missing Link 830M

OCC Dixie Erica 776M

OCC Paxton 730P

OCC Dixie Erica 771R

OCC Solution 362S

OCC Miss Focus 315R

Production EPDs			
BW	WW	Milk	YW
1.4	42	18	74

Individual Birth Wt, Ratios, Fleshing Score			
BW	Weaning	Yearling	Fleshing
80	100	107	8

This stout Double Impact son has great length of body. Fleshing ability and performance with excellent yearling performance. His dam is an outstanding Accolade daughter.



OCC Zodiac 391J

Calved 4/6/21

Angus II

OCC Umax 820U

OCC Zodiac 655Z

OCC Dixie Erica 628W

OCC Picture Perfect 738P

OCC Miss 335D

OCC Miss 103B

OCC Paxton 730P

OCC Dixie Erica 801M

OCC Practical 841P

Chloe Dixie Erica 7313

OCC Legend 616L

OCC Dixie Erica 816B

OCC Echelon 857E

OCC Miss 343Z

Production EPDs			
BW	WW	Milk	YW
0.4	39	17	65

Individual Birth Wt, Ratios, Fleshing Score			
BW	Weaning	Yearling	Fleshing
70	92	95	8.5

A son of Zodiac, this bull is stylish and well balanced. Has good feet and legs. Thick topped and big hipped.



OCC Atlas 392J

Calved 4/3/21

Angus II

OCC Transformation 680T

OCC Atlas 664A

Chloe Dixie Erica 7313

OCC Zar 869Z

OCC Miss 346G

OCC Miss 312D

OCC Focus 813F

OCC Dixie Erica 603N

Papa Forte 1921

OCC Dixie Erica 826J

OCC Homer 650H

OCC Dixie Erica 642U

OCC Little Big Man 639Z

OCC Valarie 312Y

Production EPDs			
BW	WW	Milk	YW
-0.8	39	18	68

Individual Birth Wt, Ratios, Fleshing Score			
BW	Weaning	Yearling	Fleshing
74	99	104	8

This slick haired Atlas son personifies his sire's low birth to yearling EPDs. He is muscular down his top and wide based. His dam is a nice Zar daughter from a solid cow family.



OCC Accolade 396J

Calved 4/10/21

Angus II

OCC Paxton 730P

OCC Accolade 825A

OCC Dixie Erica 771R

OCC Thumper 819T

OCC Miss 334B

OCC Miss 302U

OCC Focus 813F

OCC Blackbird 736K

OCC Missing Link 830M

OCC Dixie Erica 776M

OCC Eureka 865E

OCC Dixie Erica 954K

OCC Prototype 847P

OCC Flo 305L

Production EPDs			
BW	WW	Milk	YW
-1	39	19	67

Individual Birth Wt, Ratios, Fleshing Score			
BW	Weaning	Yearling	Fleshing
60	92	95	8

An Accolade son with a little more frame and plenty of muscle expression. His dam is a very productive Thumper daughter from a great cow family.



OCC Epitome 397J

Calved 4/11/21

Angus II

OCC Paxton 730P

OCC Epitome 630E

OCC Dixie Erica 730W

OCC Paxton 730P

OCC Miss 349Y

OCC Miss 480P

OCC Focus 813F

OCC Blackbird 736K

OCC Rear End 751R

OCC Dixie Erica 776M

OCC Focus 813F

OCC Blackbird 736K

OCC Mitchell 831M

OCC Miss Eureka 479M

Production EPDs			
BW	WW	Milk	YW
-0.5	41	20	75

Individual Birth Wt, Ratios, Fleshing Score			
BW	Weaning	Yearling	Fleshing
75	96	95	8

Another muscular Epitome son that is very sound on his feet and legs. His dam is a big volume, deep bodied 12 year old Paxton daughter.



OCC Equal 399J

Calved 4/18/21

Angus II

OCC Moderator 825M

OCC Equal 685E

OCC Pollyanna 638U

OCC Transformation 680T

OCC Miss 301F

OCC Miss 312D

OCC Headliner 661H

OCC Dixie Erica 845K

OCC Great Plains 943G

OCC Pollyanna 944H

OCC Focus 813F

OCC Dixie Erica 603N

OCC Little Big Man 639Z

OCC Valarie 312Y

Production EPDs			
BW	WW	Milk	YW
0.5	38	21	72

Individual Birth Wt, Ratios, Fleshing Score			
BW	Weaning	Yearling	Fleshing
86	111	109	8

Lot 97 is a top performing son of Equal. Note his outstanding weaning and yearling ratios. His dam is a beautiful young Transformation daughter.



OCC Equal 407J

Calved 4/21/21 Angus II

OCC Moderator 825M
OCC Equal 685E
OCC Pollyanna 638U

OCC Picture Perfect 738P
OCC Miss 305F
OCC Miss 347D

OCC Headliner 661H
OCC Dixie Erica 845K
OCC Great Plains 943G
OCC Pollyanna 944H
OCC Legend 616L
OCC Dixie Erica 816B
OCC Paxton 300X
OCC Miss 314W

Production EPDs			
BW	WW	Milk	YW
0.6	39	19	70

Individual Birth Wt, Ratios, Fleshing Score			
BW	Weaning	Yearling	Fleshing
84	108	102	8

A smaller framed, structurally correct son of Equal with great performance ratios. He is stylish, correct, and well balanced.



OCC Accolade 410J

Calved 4/23/21 Angus II

OCC Paxton 730P
OCC Accolade 825A
OCC Dixie Erica 771R

OCC Zuk 681Z
OCC Miss 369D
OCC Miss 377R

OCC Focus 813F
OCC Blackbird 736K
OCC Missing Link 830M
OCC Dixie Erica 776M
OCC Eureka 865E
OCC Dixie Erica 645U
OCC Focus 813F
OCC Miss Anchor 321G

Production EPDs			
BW	WW	Milk	YW
1.9	44	20	76

Individual Birth Wt, Ratios, Fleshing Score			
BW	Weaning	Yearling	Fleshing
88	102	102	8

Lot 99 is a massive, structurally correct bull that will be a great "cow changer". He's heavy muscled, wide based, and thick topped.



OCC You're Exact 414J

Calved 4/28/21 Angus II

OCC Paxton 730P
OCC You're Exact 763Y
OCC Pollyanna 944H

FEATURED LOT
OCC Accolade 825A
OCC Miss 335E
OCC Miss 103B

OCC Focus 813F
OCC Blackbird 736K
OCC Anchor 771A
OCC Pollyanna 979F
OCC Paxton 730P
OCC Dixie Erica 771R
OCC Echelon 857E
OCC Miss 343Z

Production EPDs			
BW	WW	Milk	YW
0.4	42	21	75

Individual Birth Wt, Ratios, Fleshing Score			
BW	Weaning	Yearling	Fleshing
80	111	114	8

A You're Exact son with great performance and many top cows in his pedigree. Moderate frame. Thick topped, wide based, and deep flanked.



OCC Fair Deal 420J

Calved 4/27/21 Angus II

OCC Moderator 825M
OCC Fair Deal 854F
OCC Juanada 570W

OCC X-tra Easy 708X
OCC Miss 325D
OCC Miss 348B

OCC Headliner 661H
OCC Dixie Erica 845K
OCC Practical 841P
OCC Juanada 826R
OCC No Problems 52N
OCC Dixie Erica 678T
OCC X-factor 677X
OCC Miss 444W

Production EPDs			
BW	WW	Milk	YW
-0.8	35	20	65

Individual Birth Wt, Ratios, Fleshing Score			
BW	Weaning	Yearling	Fleshing
74	92	97	7.5

Lot 101 is a son of Fair Deal 854F, a bull we primarily used on heifers. His dam is a good uddered, very efficient X-tra Easy daughter.



OCC Equal 422J

Calved 5/22/21 Angus II

OCC Moderator 825M
OCC Equal 685E
OCC Pollyanna 638U

OCC Accolade 825A
OCC Miss 351F
OCC Valarie 312Y

OCC Headliner 661H
OCC Dixie Erica 845K
OCC Great Plains 943G
OCC Pollyanna 944H
OCC Paxton 730P
OCC Dixie Erica 771R
Lavenham Minotaur
OCC Valarie 399H

Production EPDs			
BW	WW	Milk	YW
0.2	39	19	70

Individual Birth Wt, Ratios, Fleshing Score			
BW	Weaning	Yearling	Fleshing
82	102	107	7.5

A smaller framed son of Equal that is thick and structurally correct. Very good weaning and yearling performance. Dam is a top young Accolade daughter.



Fall calving cows and calves on stockpiled native grass at our Beloit, Kansas, ranch.

The OCC Fleckvieh-Angus Program

We selected 20 Fleckvieh cows in the 1,000-head Arnold Brother's dispersal in 2001. The cows we picked were smaller framed, dark red, very easy fleshing, good uddered and in the top 10% in production records.

We knew the cows were good, but they proved to be way better than we hoped. I selected and imported a group of these Austrian Fleckvieh in 1972-1974. The 10 best females of this group went to the Arnold Brothers and they were the basis of many of the cows I bought from them in 2001.

We then bred these cattle to our OCC Angus bulls and the result is our Fleck-Angus cattle. These are not typical Simm-Angus cattle. They are more range oriented. The frame, muscle, fleshing ability, udder quality and calving ease nearly match our Angus and Angus II cattle today. I warn you, if you try these cattle you might become addicted to them. They are GOOD!



OCC Atlas 100J

Calved 3/5/21 1/8 Fleckvieh, 7/8 Angus

OCC Transformation 680T
OCC Atlas 664A
Chloe Dixie Erica 7313
OCC You're Exact 763Y
OCC Miss 133G
OCC Nadia 127N

OCC Focus 813F
OCC Dixie Erica 603N
Papa Forte 1921
OCC Dixie Erica 826J
OCC Paxton 730P
OCC Pollyanna 944H
OCC Jet Stream 825J
Miss Arnold F9708

Production EPDs				Individual Birth Wt, Ratios, Fleshing Score			
BW	WW	Milk	YW	BW	Weaning	Yearling	Fleshing
-1.1	56	24	80	66	101	104	8

This Atlas son features very low birth combined with good weaning and yearling performance. His dam is a daughter of OCC Nadia 127N, one of our original Fleck-Angus cows born in 2003. She remained in the herd to 19 years of age!



OCC Zar 104J

Calved 3/13/21 1/8 Fleckvieh, 7/8 Angus

OCC Homer 650H
OCC Zar 869Z
OCC Dixie Erica 642U
OCC Anvil 809A
OCC Gloria 150G
OCC Scarlett 111S

OCC Focus 813F
OCC Dixie Erica 816B
OCC Paxton 730P
OCC Dixie Erica 801M
OCC Missing Link 830M
FCC Blackcap Lady 3810
OCC Jet Stream 825J
OCC Miss 134M

Production EPDs				Individual Birth Wt, Ratios, Fleshing Score			
BW	WW	Milk	YW	BW	Weaning	Yearling	Fleshing
-0.8	57	22	79	72	97	107	8

A very stout Zar son that will be a "cow changer". His dam is sired by the powerfull Anvil 809A, making her a full sister to Exceptional Blaze 149E. His granddam, 111S, has produced 15 natural calves to date and remains in the herd at 17 years of age.



OCC Extra Power 116J

Calved 3/20/21 1/16 Fleckvieh, 15/16 Angus II

OCC Paxton 730P
OCC Extra Power 307E
OCC Flo 404R
OCC You're Exact 763Y
OCC Miss 107G
OCC Miss 116X

OCC Focus 813F
OCC Blackbird 736K
OCC Eureka 865E
OCC Miss Anchor 488E
OCC Paxton 730P
OCC Pollyanna 944H
OCC Transformation 680T
OCC Toni 134T

Production EPDs				Individual Birth Wt, Ratios, Fleshing Score			
BW	WW	Milk	YW	BW	Weaning	Yearling	Fleshing
1.2	60	24	82	84	98	102	9

An extremely stout and easy fleshing Extra Power son. His maternal granddam, 116X, is a smaller framed cow with tremendous depth, volume, and fleshing ability. She remains sound and productive at 13 years of age and just calved again in March with her 12th calf.



OCC Epitome 111J

Calved 3/16/21 1/32 Fleckvieh, 31/32 Angus

OCC Paxton 730P
OCC Epitome 630E
OCC Dixie Erica 730W
OCC X-cellent 857X
OCC Miss 173C
OCC Miss 102X

OCC Focus 813F
OCC Blackbird 736K
OCC Rear End 751R
OCC Dixie Erica 776M
OCC Focus 813F
OCC Blackcap 872K
OCC Solution 362S
OCC Trixie 100T

Production EPDs				Individual Birth Wt, Ratios, Fleshing Score			
BW	WW	Milk	YW	BW	Weaning	Yearling	Fleshing
0.5	58	22	80	70	98	103	8.5

A thick and powerful Epitome son out of a low percentage Fleck-Angus dam.



OCC Zar 119J

Calved 3/21/21 1/32 Fleckvieh, 31/32 Angus

OCC Homer 650H

OCC Zar 869Z

OCC Dixie Erica 642U

FEATURED LOT

OCC Dakota 687D

OCC Miss 124G

OCC Miss 151C

OCC Focus 813F

OCC Dixie Erica 816B

OCC Paxton 730P

OCC Dixie Erica 801M

OCC Zodiac 655Z

OCC Dixie Erica 839A

OCC Xample 810X

OCC Miss 151Z

Production EPDs			
BW	WW	Milk	YW
0.5	62	22	88

Individual Birth Wt, Ratios, Fleshing Score			
BW	Weaning	Yearling	Fleshing
78	114	111	8

Lot 107 is a good and thick Zar son with outstanding weaning and yearling performance. Note that his dam is a Dakota daughter. This predominately Angus bull will provide good weaning performance and strong maternal traits.



OCC Exceptional 124J

Calved 3/23/21 1/4 Fleckvieh, 3/4 Angus

OCC Anvil 809A

OCC Exceptional Blaze 149E

OCC Scarlett 111S

OCC Jet Stream 825J

OCC Miss 150A

OCC Miss 194Y

OCC Missing Link 830M

FCC Blackcap Lady 3810

OCC Jet Stream 825J

OCC Miss Arnold 134M

OCC Emblazon 854E

OCC Juanada 968G

OCC Kiddo 832K

Miss Arnold E5562

Production EPDs			
BW	WW	Milk	YW
1.1	58	24	78

Individual Birth Wt, Ratios, Fleshing Score			
BW	Weaning	Yearling	Fleshing
66	95	96	8.5

A moderate framed son of Exceptional Blaze 149E with an attractive phenotype. His dam is a perfect uddered Jet Stream daughter. Two heifers from the same cow family sell as lots 189 and 191.



OCC Miss 179F – A Fleck-Angus cow sired by OCC Alpha 700A in the fall calving herd at our Beloit ranch. She's only 1/16 Fleckvieh but these low percentage cows have never shorted us on producing ability.



OCC Atlas 120J

Calved 3/22/21 1/8 Fleckvieh, 7/8 Angus

OCC Transformation 680T

OCC Atlas 664A

Chloe Dixie Erica 7313

OCC Anvil 809A

OCC Miss 156G

OCC Miss 194Y

OCC Focus 813F

OCC Dixie Erica 603N

Papa Forte 1921

OCC Dixie Erica 826J

OCC Missing Link 830M

FCC Blackcap Lady 3810

OCC Kiddo 832K

Miss Arnold E5562

Production EPDs			
BW	WW	Milk	YW
0.8	59	24	82

Individual Birth Wt, Ratios, Fleshing Score			
BW	Weaning	Yearling	Fleshing
78	106	102	8

We have used Atlas extensively as a calving ease sire on Fleck-Angus heifers and been very pleased with the results at calving time and beyond. Lot 108 is stout and attractive with very good weaning and yearling performance.



OCC Atlas 128J

Calved 3/24/21 1/32 Fleckvieh, 31/32 Angus

OCC Transformation 680T

OCC Atlas 664A

Chloe Dixie Erica 7313

OCC Captain 271C

OCC Miss 149G

OCC Miss 123D

OCC Focus 813F

OCC Dixie Erica 603N

Papa Forte 1921

OCC Dixie Erica 826J

OCC Gulf Stream 183Z

OCC Miss 274Z

OCC Paxton 300X

OCC Miss 105Z

Production EPDs			
BW	WW	Milk	YW
-0.4	55	22	78

Individual Birth Wt, Ratios, Fleshing Score			
BW	Weaning	Yearling	Fleshing
62	96	95	8

A low-birth Atlas son out of a beautiful young cow with ideal udder quality. He's heavy muscled, deep bodied, and stylish.



OCC Extra Power 129J

Calved 3/26/21 1/4 Fleckvieh, 3/4 Angus II

OCC Paxton 730P

OCC Extra Power 307E

OCC Flo 404R

FEATURED LOT

OCC Eureka 865E

OCC Miss 134N

Miss Arnold E1152

OCC Focus 813F

OCC Blackbird 736K

OCC Eureka 865E

OCC Miss Anchor 488E

OCC Backstop 888B

Blackbird of R R 1204

LJB Jade AJ6

Miss Arnold C1721

Production EPDs			
BW	WW	Milk	YW
0.8	52	25	82

Individual Birth Wt, Ratios, Fleshing Score			
BW	Weaning	Yearling	Fleshing
77	102	103	8

This Extra Easy son is very thick and stout. His Eureka sired dam was an 18 year old cow when she raised this bull but he was her last calf unfortunately. Now gone, she never missed raising a great calf.



OCC Exceptional 132J

Calved 3/26/21 1/4 Fleckvieh, 3/4 Angus

OCC Anvil 809A
OCC Exceptional Blaze 149E
OCC Scarlett 111S

OCC X-factor 677X
OCC Miss 276B

OCC Anchor's Natalie 135N

OCC Missing Link 830M
FCC Blackcap Lady 3810
OCC Jet Stream 825J
OCC Miss Arnold 134M
OCC Focus 813F
OCC Dixie Erica 603N
OCC Anchor 771A
Miss Arnold F9789

Production EPDs			
BW	WW	Milk	YW
1.4	61	24	85

Individual Birth Wt, Ratios, Fleshing Score			
BW	Weaning	Yearling	Fleshing
90	98	101	7.5

A thick and powerful Exceptional Blaze 149E bull. His maternal granddam, 135N, was a big volume Anchor daughter from our first Fleck-Angus calf crop. Expect excellent weaning performance and premier maternal traits with this bull.



OCC Exceptional 136J

Calved 3/26/21 3/16 Fleckvieh, 13/16 Angus

OCC Anvil 809A
OCC Exceptional Blaze 149E
OCC Scarlett 111S

OCC Y Not 388Y
OCC Miss 117B

OCC Miss 129Y

OCC Missing Link 830M
FCC Blackcap Lady 3810
OCC Jet Stream 825J
OCC Miss Arnold 134M
OCC Night Watch 902N
OCC Juanada 723S
OCC Mitchell 831M
OCC Miss 180P

Production EPDs			
BW	WW	Milk	YW
2.1	60	20	87

Individual Birth Wt, Ratios, Fleshing Score			
BW	Weaning	Yearling	Fleshing
90	104	104	8

Another good growth, well balanced son of Exceptional Blaze 149E. Very good actual weaning and yearling performance with EPDs to match.



OCC Gulf Stream 149J

Calved 4/13/21 1/8 Fleckvieh, 7/8 Angus

OCC Jet Stream 939W
OCC Gulf Stream 183Z
OCC Toni 134T

FEATURED LOT
OCC You're Exact 763Y
OCC Miss 135E

OCC Miss 145B

OCC Jet Stream 825J
OCC Juanada 861T
OCC Mitchell 831M
Miss Arnold F9708
OCC Paxton 730P
OCC Pollyanna 944H
OCC Cosmic 154Y
OCC Miss Paxton 155W

Production EPDs			
BW	WW	Milk	YW
0.9	61	23	82

Individual Birth Wt, Ratios, Fleshing Score			
BW	Weaning	Yearling	Fleshing
70	102	107	8

A deep sided, attractive Gulf Stream son with low-birth and very good weaning and yearling performance. His dam is a very nice You're Exact daughter.



OCC Extra Power 133J

Calved 3/26/21 1/4 Fleckvieh, 3/4 Angus II

OCC Paxton 730P
OCC Extra Power 307E
OCC Flo 404R

OCC Mitchell 831M
MFI Black Flora 9070

MFI Flora 7033

OCC Focus 813F
OCC Blackbird 736K
OCC Eureka 865E
OCC Miss Anchor 488E
OCC Hunter 928H
OCC Erica Lassie 839J
IPU Bronson 19K
MFI Flora 4128

Production EPDs			
BW	WW	Milk	YW
0.8	62	24	90

Individual Birth Wt, Ratios, Fleshing Score			
BW	Weaning	Yearling	Fleshing
67	103	106	8

A very low birth Extra Power son with superior weaning and yearling performance. His dam is a 14-year-old Mitchell daughter. He's a complete bull - stout and growthy with excellent maternal ancestry.



OCC Exceptional 146J

Calved 4/5/21 3/16 Fleckvieh, 13/16 Angus II

OCC Anvil 809A
OCC Exceptional Blaze 149E
OCC Scarlett 111S

OCC Paxton 300X
OCC Miss 123D

OCC Miss 105Z

OCC Missing Link 830M
FCC Blackcap Lady 3810
OCC Jet Stream 825J
OCC Miss Arnold 134M
OCC Paxton 730P
OCC Miss Emblazon 512L
OCC Mitchell 336U
OCC Legend's Miss 184R

Production EPDs			
BW	WW	Milk	YW
2.3	58	22	86

Individual Birth Wt, Ratios, Fleshing Score			
BW	Weaning	Yearling	Fleshing
92	110	108	7.5

Another Exceptional Blaze 149E son with excellent weaning and yearling performance. His dam is a smooth, slick haired Paxton granddaughter.



OCC Extra Power 152J

Calved 4/14/21 1/8 Fleckvieh, 7/8 Angus II

OCC Paxton 730P
OCC Extra Power 307E
OCC Flo 404R

FEATURED LOT
OCC Jet Stream 825J
OCC Scarlett 111S
OCC Miss Arnold 134M

OCC Focus 813F
OCC Blackbird 736K
OCC Eureka 865E
OCC Miss Anchor 488E
OCC Emblazon 854E
OCC Juanada 968G
Sir Arnold J5606
Miss Arnold E5562

Production EPDs			
BW	WW	Milk	YW
2.2	64	26	95

Individual Birth Wt, Ratios, Fleshing Score			
BW	Weaning	Yearling	Fleshing
96	122	117	8

An Extra Power son with incredible growth and performance. His dam is OCC Scarlett 111S, making him a maternal brother to 149E. Exhibiting great longevity, 111S remains in the herd at 17 years of age and is easily the highest ratioing cow at OCC.



OCC Equal 153J

Calved 4/15/21 3/16 Fleckvieh, 13/16 Angus

OCC Moderator 825M
OCC Equal 685E
OCC Pollyanna 638U

OCC Gulf Stream 183Z
OCC Miss 119F
MFI Black Helga 7054

OCC Headliner 661H
OCC Dixie Erica 845K
OCC Great Plains 943G
OCC Pollyanna 944H
OCC Jet Stream 939W
OCC Toni 134T
OCC Paxton 730P
MFI Helga 5165

Production EPDs			
BW	WW	Milk	YW
1.1	58	20	76

Individual Birth Wt, Ratios, Fleshing Score			
BW	Weaning	Yearling	Fleshing
77	103	100	8

This Equal son is smaller framed with good thickness and depth. His dam, 119F, is a Gulf Stream daughter that consistently produces a top calf.



OCC Extra Power 156J

Calved 4/18/21 1/4 Fleckvieh, 3/4 Angus II

OCC Paxton 730P
OCC Extra Power 307E
OCC Flo 404R

OCC Ureka 960U
OCC Miss 178Z
Miss Arnold F9708

OCC Focus 813F
OCC Blackbird 736K
OCC Eureka 865E
OCC Miss Anchor 488E
OCC Eureka 865E
OCC Dixie Erica 816B
Sir Arnold B9018A
Miss Arnold D9496

Production EPDs			
BW	WW	Milk	YW
1.6	61	24	82

Individual Birth Wt, Ratios, Fleshing Score			
BW	Weaning	Yearling	Fleshing
78	100	104	8

Extra Power 307E sons are as good as it gets. He stamps them all with ample muscle and an attractive phenotype.



OCC Gulf Stream 159J

Calved 4/16/21 1/4 Fleckvieh, 3/4 Angus

OCC Jet Stream 939W
OCC Gulf Stream 183Z
OCC Toni 134T

OCC Anvil 809A
OCC Miss 157F
OCC Miss 194Y

OCC Jet Stream 825J
OCC Juanada 861T
OCC Mitchell 831M
Miss Arnold F9708
OCC Missing Link 830M
FCC Blackcap Lady 3810
OCC Kiddo 832K
Miss Arnold E5562

Production EPDs			
BW	WW	Milk	YW
2.1	62	23	88

Individual Birth Wt, Ratios, Fleshing Score			
BW	Weaning	Yearling	Fleshing
85	97	98	7.5

Gulf Stream 183Z has left a tremendous legacy at OCC through his many progeny. This son's pedigree features our two dominant foundation Fleckvieh cows - F9708 and E5562.



OCC Gulf Stream 161J

Calved 4/16/21 1/8 Fleckvieh, 7/8 Angus

OCC Jet Stream 939W
OCC Gulf Stream 183Z
OCC Toni 134T

OCC Gulf Stream 183Z
OCC Miss 129F
OCC Miss 150A

OCC Jet Stream 825J
OCC Juanada 861T
OCC Mitchell 831M
Miss Arnold F9708
OCC Jet Stream 939W
OCC Toni 134T
OCC Jet Stream 825J
OCC Miss 194Y

Production EPDs			
BW	WW	Milk	YW
1.3	58	22	79

Individual Birth Wt, Ratios, Fleshing Score			
BW	Weaning	Yearling	Fleshing
81	96	98	7.5

Another Gulf Stream son that is intensely linebred that way through a sire-daughter mating. Moderate birth with very good weaning and yearling EPDs.



OCC Equal 163J

Calved 4/20/21 1/16 Fleckvieh, 15/16 Angus II

OCC Moderator 825M
OCC Equal 685E
OCC Pollyanna 638U

OCC Wholesome 667W
OCC Miss 131F
OCC Miss 147Z

OCC Headliner 661H
OCC Dixie Erica 845K
OCC Great Plains 943G
OCC Pollyanna 944H
OCC Practical 841P
OCC Juanada 664R
OCC Transformation 680T
Akers Miss Emblazon U100

Production EPDs			
BW	WW	Milk	YW
1.1	56	22	78

Individual Birth Wt, Ratios, Fleshing Score			
BW	Weaning	Yearling	Fleshing
65	94	95	8

A low birth Equal son that will sire excellent replacement females. His dam is a good young Wholesome daughter.



OCC Exceptional 165J

Calved 4/22/21 3/8 Fleckvieh, 5/8 Angus

OCC Anvil 809A
OCC Exceptional Blaze 149E
OCC Scarlett 111S

FEATURED LOT
OCC Paxton 730P
OCC Miss 157X
Miss Arnold E5562

OCC Missing Link 830M
FCC Blackcap Lady 3810
OCC Jet Stream 825J
OCC Miss Arnold 134M
OCC Focus 813F
OCC Blackbird 736K
Panzer
Miss Arnold A5225

Production EPDs			
BW	WW	Milk	YW
1.4	64	24	92

Individual Birth Wt, Ratios, Fleshing Score			
BW	Weaning	Yearling	Fleshing
80	114	107	7.5

A very good 149E son out of a 13-year-old Paxton daughter. Moderate birth combined with excellent weaning and yearling performance. Double bred to the great E5562 foundation cow.



OCC Gulf Stream 166J

Calved 4/11/21 1/4 Fleckvieh, 3/4 Angus

OCC Jet Stream 939W

OCC Jet Stream 825J

OCC Gulf Stream 183Z

OCC Juanada 861T

OCC Miss 134T

OCC Mitchell 831M

FEATURED LOT

OCC Rear End 751R

Miss Arnold F9708

OCC Homer 650H

OCC Miss 107Y

FCC Revolution Rose 995N

MFI Blk Miss Knight 100F 9030

OCC Total 616T

MFI Miss Knight 100F 6088

Production EPDs			
BW	WW	Milk	YW
1.2	62	24	90

Individual Birth Wt, Ratios, Fleshing Score			
BW	Weaning	Yearling	Fleshing
82	116	107	8

This Gulf Stream son is big and good with outstanding weaning and yearling performance. His dam is a top producing 14-year-old Rear End daughter.



OCC Gulf Stream 167J

Calved 3/26/21 5/16 Fleckvieh, 11/16 Angus

OCC Jet Stream 939W

OCC Jet Stream 825J

OCC Gulf Stream 183Z

OCC Juanada 861T

OCC Miss 134T

OCC Mitchell 831M

OCC Blaze Jettfleck 279Z

Miss Arnold F9708

OCC Jet Stream 825J

OCC Miss 125D

Miss Arnold F9708

OCC Miss 157U

OCC Paxton 730P

OCC Nellie 125N

Production EPDs			
BW	WW	Milk	YW
-0.8	55	20	72

Individual Birth Wt, Ratios, Fleshing Score			
BW	Weaning	Yearling	Fleshing
50	92	99	7.5

A very low birth Gulf Stream son that will specialize as a replacement female sire. Note that he's double bred to the Miss Arnold F9708 foundation cow.



OCC Anvil 174J

Calved 5/8/21 1/8 Fleckvieh, 7/8 Angus

OCC Missing Link 830M

OCC Headliner 661H

OCC Anvil 809A

OCC Dixie Erica 946KFCC

Blackcap Lady 3810

OCC Anchor 771A

H A Blackcap Lady 0464

OCC Y Not 388Y

OCC Night Watch 902N

OCC Miss 138C

OCC Juanada 723S

MFI Black Lolita 8086

OCC Paxton 730P

MFI Lolita 6190

Production EPDs			
BW	WW	Milk	YW
0.9	62	22	88

Individual Birth Wt, Ratios, Fleshing Score			
BW	Weaning	Yearling	Fleshing
74	111	108	8

A top performing son of Anvil 809A with a very moderate birth weight. We used Anvil on Fleck-Angus cows for many years and his calves always weighed heavy at weaning. This bull will continue that tradition.



OCC Perflektion 270J

Calved 1/25/21 5/16 Fleckvieh, 11/16 Angus

OCC You're The One 610Y

OCC Missing Link 830M

OCC Perflektion 111A

OCC Dixie Erica 903E

OCC Miss 122W

OCC Rear End 751R

OCC Jet Stream 825J

MFI Black Litta 7078

OCC Emblazon 854E

OCC Paisley 160P

OCC Juanada 968G

Miss Arnold E5568

Panzer

Miss Arnold A5225

Production EPDs			
BW	WW	Milk	YW
0.8	59	24	81

Individual Birth Wt, Ratios, Fleshing Score			
BW	Weaning	Yearling	Fleshing
91	ET	ET	8

This Perflektion son from our ET program is thick, wide, and powerful. His dam is the 160P Jet Stream daughter known for her producing ability and great longevity. A full brother sells as lot 128.



OCC Perflektion 273J

Calved 1/28/21 5/16 Fleckvieh, 11/16 Angus

OCC You're The One 610Y

OCC Missing Link 830M

OCC Perflektion 111A

OCC Dixie Erica 903E

OCC Miss 122W

OCC Rear End 751R

OCC Jet Stream 825J

MFI Black Litta 7078

OCC Emblazon 854E

OCC Paisley 160P

OCC Juanada 968G

Miss Arnold E5568

Panzer

Miss Arnold A5225

Production EPDs			
BW	WW	Milk	YW
0.8	59	24	81

Individual Birth Wt, Ratios, Fleshing Score			
BW	Weaning	Yearling	Fleshing
90	ET	ET	8

Another ET Perflektion son that's a full brother to lot 127. This bull is also massively thick and wide. It's difficult to find fault with either of these Perflektion sons.



OCC Gulf Stream 359J

Calved 5/1/20 1/8 Fleckvieh, 7/8 Angus II

CC Jet Stream 939W

OCC Jet Stream 825J

OCC Gulf Stream 183Z

OCC Juanada 861T

OCC Miss 134T

OCC Mitchell 831M

OCC Zodiac 364C

Miss Arnold F9708

OCC Zodiac 655Z

OCC Miss 341F

OCC Miss Upstart 439Y

OCC Miss 497B

OCC Prototype 847P

OCC Miss Emblazon 512L

Production EPDs			
BW	WW	Milk	YW
-0.8	52	22	75

Individual Birth Wt, Ratios, Fleshing Score			
BW	Weaning	Yearling	Fleshing
60	98	98	8.5

We started using Gulf Stream on a group of Angus II cows several years ago and have been thrilled with the results. This son is very low-birth and will sire exceptional females.



OCC Gulf Stream 367J

Calved 3/29/21 1/8 Fleckvieh, 7/8 Angus II

OCC Jet Stream 939W

OCC Gulf Stream 183Z

OCC Miss 134T

FEATURED LOT

OCC X-tra Easy 708X

OCC Miss 317F

OCC Miss 337D

OCC Jet Stream 825J

OCC Juanada 861T

OCC Mitchell 831M

Miss Arnold F9708

OCC No Problems 52N

OCC Dixie Erica 678T

OC Paxton 300X

OCC Miss 363Z

Production EPDs			
BW	WW	Milk	YW
0.5	55	22	78

Individual Birth Wt, Ratios, Fleshing Score			
BW	Weaning	Yearling	Fleshing
74	105	114	8

Another Gulf Stream son out of an Angus II dam. Low birth with outstanding weaning and yearling performance.



OCC Gulf Stream 372J

Calved 3/30/21 1/8 Fleckvieh, 7/8 Angus II

OCC Jet Stream 939W

OCC Gulf Stream 183Z

OCC Miss 134T

OCC Little Big Man 639Z

OCC Miss 300D

OCC Flo 595R

OCC Jet Stream 825J

OCC Juanada 861T

OCC Mitchell 831M

Miss Arnold F9708

OCC Paxton 730P

OCC Dixie Erica 605K

Troycastle Ali 2

OCC Flo 302V

Production EPDs			
BW	WW	Milk	YW
0.8	58	24	82

Individual Birth Wt, Ratios, Fleshing Score			
BW	Weaning	Yearling	Fleshing
78	112	109	8.5

A very thick and stout Gulf Stream son with superior weaning and yearling performance. His dam is a daughter of the powerful Paxton son named Little Big Man. A maternal sister sells as Lot 193.



OCC Gulf Stream 425J

Calved 5/31/21 1/8 Fleckvieh, 7/8 Angus II

OCC Jet Stream 939W

OCC Gulf Stream 183Z

OCC Miss 134T

OCC Paxton 300X

OCC Miss 369C

OCC Miss 444W

OCC Jet Stream 825J

OCC Juanada 861T

OCC Mitchell 831M

Miss Arnold F9708

OCC Paxton 730P

OCC Miss Emblazon 512L

OCC Prophet 666P

OCC Flo 595R

Production EPDs			
BW	WW	Milk	YW
0.4	57	22	78

Individual Birth Wt, Ratios, Fleshing Score			
BW	Weaning	Yearling	Fleshing
77	103	106	8.5

The excellent performance of Gulf Stream progeny out of Angus II cows has been most impressive. Moderate birth with solid weaning and yearling ratios.



OCC Gulf Stream 667J

Calved 3/26/21 1/8 Fleckvieh, 7/8 Angus II

OCC Jet Stream 939W

OCC Gulf Stream 183Z

OCC Miss 134T

OCC Accolade 825A

OCC Miss 346F

OCC Miss 369B

OCC Jet Stream 825J

OCC Juanada 861T

OCC Mitchell 831M

Miss Arnold F9708

OCC Paxton 730P

OCC Dixie Erica 771R

OCC Legend 616L

OCC Valarie 452L

Production EPDs			
BW	WW	Milk	YW
1.2	59	23	80

Individual Birth Wt, Ratios, Fleshing Score			
BW	Weaning	Yearling	Fleshing
87	109	108	8

Another Gulf Stream son with top weaning and yearling performance. His dam is a smooth-made, deep flanked Accolade daughter with great udder quality.



OCC Power Fleck 051J

Calved 3/16/21 1/16 Fleck, 3/8 HP, 9/16 Angus II

BTF 4 3119 ET

OCC Power Baldy 063W

OCC Valarie 452L

OCC Zorro 067Z

OCC Miss 056C

OCC Trixie 100T

NT Plato Rupert 4

NT Austina 338

OCC Joker 620J

OCC Valarie 394H

BTF 4 3119 ET

OCC Valarie 452L

OCC Prototype 847P

OCC Nadia 127N

Production EPDs			
BW	WW	Milk	YW
2.2	54	20	75

Individual Birth Wt, Ratios, Fleshing Score			
BW	Weaning	Yearling	Fleshing
90	94	98	8

Power Baldy is a 1/2 Angus II, 1/2 Polled Hereford bull that we continue to use selectively in our Fleck-Angus and Angus II programs. This son is actually linebred to the 3119 Polled Hereford bull as well as the high producing 452L cow.



OCC Exceptional 057J

Calved 4/3/21 3/16 Fleck, 1/16 HP, 3/4 Angus

OCC Anvil 809A

OCC Exceptional Blaze 149E

OCC Scarlett 111S

OCC Zebron 871Z

OCC Miss 059F

OCC Miss 053B

OCC Missing Link 830M

FCC Blackcap Lady 3810

OCC Jet Stream 825J

OCC Miss Arnold 134M

OCC Rear End 751R

OCC Pollyanna 944H

OCC Power Baldy 063W

MFI Black Litta 7078

Production EPDs			
BW	WW	Milk	YW
0.9	54	25	78

Individual Birth Wt, Ratios, Fleshing Score			
BW	Weaning	Yearling	Fleshing
56	92	98	8

A well balanced, low birth son of Exceptional Blaze out of a beautiful young Zebron daughter. This bull also has a touch of Polled Hereford breeding.



OCC Style with Ease 058J

Calved 4/11/21 1/16 Fleck, 1/16 HP, 7/8 Angus

OCC Awakening 893A
OCC-ALC Style with Ease
ALC Juanada 501

OCC You're Exact 763Y
OCC Miss 052G
OCC Miss 077C

OCC No Problems 52N
OCC Dixie Erica 617P
OCC X-cite 825X
A L C Dixie Erica 218
OCC Paxton 730P
OCC Pollyanna 944H
OCC Zorro 067Z
OCC Belinda 137R

Production EPDs			
BW	WW	Milk	YW
-0.5	50	22	72

Individual Birth Wt, Ratios, Fleshing Score			
BW	Weaning	Yearling	Fleshing
68	92	96	8

A low birth and attractive Style with Ease son. His dam is an eye-catching young BWF You're Exact daughter.



OCC Miss 148Z — Pictured with her 2022 bull calf by OCC Zodiac's Jetfleck 251H, this 1/4 Fleckvieh, 3/4 Angus cow is sired by Transformation 680T. Her maternal granddam is the foundation Miss Arnold E5562 Fleckvieh cow.



A 3-year-old Paxton sired female / 1/2 Angus, 1/2 Fleckvieh



OCC Cow Maker 728J

Calved 4/2/21 1/4 Senepol, 3/4 Angus

BTF 7841 4F 3613
Southern Cow Maker
FCC Blackcap Lady 3810

FEATURED LOT

OCC X-cellent 857X
OCC Miss 727Z
OCC Miss 594W

Milkman MS4F
WC 7841F
OCC Anchor 771A
H A Blackcap Lady 0464
OCC Focus 813F
OCC Blackcap 872K
OCC Emblazon 854E
OCC Miss 425R

Production EPDs			
BW	WW	Milk	YW
-1.4	48	22	68

Individual Birth Wt, Ratios, Fleshing Score			
BW	Weaning	Yearling	Fleshing
65	102	104	8.5

Southern Cow Maker is a 1/2 Senepol, 1/2 Angus bull that specializes in siring easy fleshing, slick haired calves with improved heat tolerance. This son is out of a deep flanked, easy fleshing Angus cow. Low birth combined with top weaning and yearling performance.



OCC Paisley 160P — A 1/2 Fleckvieh, 1/2 Angus cow sired by OCC Jet Stream 825J pictured at 16 years of age with her 2020 fall born bull calf. She is the dam of the ET bulls that sell as Lots 127 and 128.



OCC Red Gem 171G — We like 'em thick at OCC. Red Gem is a 1/8 Fleckvieh bull that we used for pasture breeding in 2022. Looking forward to his first calves.

The females offered this year represent OCC's three main breed groups: registered Angus, Angus II and Fleckvieh-Angus. These females, including the yearling heifers, have grazed out all winter and have not received supplemental feed prior to the sale. The offering includes a mix of open yearling heifers, a group of late spring calving heifers, and a few fall bred females. We think these females are ready to go to work and excel in any forage-based system.

Lots 138–185

Registered Angus Lots 138 - 164

Registered Red Angus Lot 165

Angus II Lots 166 - 183

Fleckvieh-Angus Lots 184 - 198



OCC Dixie Erica 614K

Calved 3/13/22 20606640

OCC Zodiac 655Z

OCC Dakota 687D

OCC Dixie Erica 839A

FEATURED LOT

OCC Wholesome 667W

OCC Dixie Erica 649G

OCC Dixie Erica 694C

OCC Umax 820U

OCC Dixie Erica 628W

OCC Paxton 730P

OCC Dixie Erica 637S

OCC Practical 841P

OCC Juanada 664R

OCC Paxton 730P

OCC Dixie Erica 803X

Production EPDs			
CED	BW	WW	YW
10	-0.1	39	62

Maternal EPDs				\$Values
CEM	Milk	\$EN	\$W	
-1	18	16	34	

A Dakota daughter with 3+ generations of maternal ancestry noted for volume, fleshing ability, and udder quality. Maternal great granddam is 803X. Top 2% of the breed for \$EN. Sells open.



OCC Dixie Erica 629K

Calved 3/16/22 20606645

OCC Paxton 730P

OCC Accolade 825A

OCC Dixie Erica 771R

FEATURED LOT

OCC Blueprint 632B

OCC Dixie Erica 693F

OCC Dixie Erica 727D

OCC Focus 813F

OCC Blackbird 736K

OCC Missing Link 830M

OCC Dixie Erica 776M

OCC Moderator 825M

OCC Dixie Erica 628W

OCC You're Exact 763Y

OCC Dixie Erica 811Z

Production EPDs			
CED	BW	WW	YW
8	0.8	43	75

Maternal EPDs				\$Values
CEM	Milk	\$EN	\$W	
1	23	3	39	

A good Accolade daughter that's double bred to Paxton. Dam is a smooth & attractive Blueprint daughter. Sells open.



OCC Dixie Erica 630K

Calved 3/16/22 20606646

OCC Zodiac 655Z

OCC Do It All 656D

OCC Dixie Erica 827A

FEATURED LOT

OCC Linebred 661L

OCC Dixie Erica 654C

OCC Dixie Erica 828A

OCC Umax 820U

OCC Dixie Erica 628W

OCC Paxton 730P

OCC Dixie Erica 771R

OCC Homer 650H

OCC Dixie Erica 686J

OCC Paxton 730P

OCC Dixie Erica 771R

Production EPDs			
CED	BW	WW	YW
12	-0.9	37	69

Maternal EPDs				\$Values
CEM	Milk	\$EN	\$W	
3	18	13	30	

Lot 140 is sired by Do It All 656D, the high selling bull at \$115,000 in our 2018 sale. She's also linebred to the 771R cow. Sells open.



OCC Erica Lassie 635K

Calved 3/17/22 20606648

OCC Moderator 825M

OCC Equal 685E

OCC Pollyanna 638U

FEATURED LOT

OCC Focus 813F

OCC Erica Lassie 616H

OCC Erica Lassie 770F

OCC Headliner 661H

OCC Dixie Erica 845K

OCC Great Plains 943G

OCC Pollyanna 944H

Basin Rainmaker 654X

Dixie Erica of C H 1019

OCC Zar 869Z

OCC Erica Lassie 628C

Production EPDs			
CED	BW	WW	YW
14	-2.3	29	48

Maternal EPDs				\$Values
CEM	Milk	\$EN	\$W	
9	19	17	28	

A very smooth and easy fleshing Equal daughter. She's very low birth and her dam is a young, new generation Focus 813F daughter. Sells open.



OCC Dixie Erica 639K

Calved 3/19/22 20606650

OCC Zodiac 655Z

OCC Dakota 687D

OCC Dixie Erica 839A

OCC Legacy 839L

OCC Dixie Erica 630G

OCC Dixie Erica 812A

OCC Umax 820U

OCC Dixie Erica 628W

OCC Paxton 730P

OCC Dixie Erica 637S

OCC Echelon 857E

OCC Dixie Erica 960E

OCC Rear End 751R

OCC Dixie Erica 605K

Production EPDs			
CED	BW	WW	YW
10	0.3	32	52

Maternal EPDs			\$Values
CEM	Milk	\$EN	\$W
3	18	19	27

Another excellent Dakota daughter. Dam is a great young cow - a Legacy out of a Rear End daughter! Top 1% of the breed for \$EN. Sells open.



OCC Dixie Erica 645K

Calved 3/19/22 20606652

OCC Zodiac 655Z

OCC Dakota 687D

OCC Dixie Erica 839A

OCC Zar 869Z

OCC Dixie Erica 755E

OCC Dixie Erica 663C

OCC Umax 820U

OCC Dixie Erica 628W

OCC Paxton 730P

OCC Dixie Erica 637S

OCC Homer 650H

OCC Dixie Erica 642U

OCC Big Time 746Z

OCC Dixie Erica 605K

Production EPDs			
CED	BW	WW	YW
10	0.4	36	62

Maternal EPDs			\$Values
CEM	Milk	\$EN	\$W
2	18	16	29

Deep flanked, easy fleshing Dakota daughters make efficient cows. Dam is an attractive Zar x Big Time! Top 2% of the breed for \$EN. Sells open.



OCC Juanada 676K

Calved 3/26/22 20617336

OCC Umax 820U

OCC Zodiac 655Z

OCC Dixie Erica 628W

FEATURED LOT

OCC Paxton 730P

OCC Juanada 884C

OCC Juanada 845Z

OCC Paxton 730P

OCC Dixie Erica 801M

OCC Practical 841P

Chloe Dixie Erica 7313

OCC Focus 813F

OCC Blackbird 736K

OCC Homer 650H

OCC Juanada 735X

Production EPDs			
CED	BW	WW	YW
11	-1.3	36	60

Maternal EPDs			\$Values
CEM	Milk	\$EN	\$W
1	17	16	37

Wow! An excellent Zodiac daughter out of a big volume Paxton dam. Double bred to Paxton and 4 times to Focus 813F. Top 2% of the breed for \$EN. Sells open.



OCC Pollyanna 729K

Calved 4/4/22 20617353

OCC Homer 650H

OCC Rear End 751R

FCC Revolution Rose 995N

FEATURED LOT

OCC Paxton 730P

OCC Pollyanna 744Y

OCC Pollyanna 944H

OCC Focus 813F

OCC Dixie Erica 816B

OCC Joker 620J

OCC Revolution Rose 887H

OCC Focus 813F

OCC Blackbird 736K

OCC Anchor 771A

OCC Pollyanna 979F

Production EPDs			
CED	BW	WW	YW
5	1.8	43	71

Maternal EPDs			\$Values
CEM	Milk	\$EN	\$W
1	19	16	44

A powerful Rear End daughter from the great 944H cow family. Her 744Y Paxton sired dam has been an ET donor. Top 2% of the breed for \$EN. Sells open.



OCC Pollyanna 738K

Calved 4/8/22 20617355

OCC Paxton 730P

OCC Accolade 825A

OCC Dixie Erica 771R

FEATURED LOT

OCC Focus 813F

OCC Pollyanna 699F

OCC Pollyanna 636B

OCC Focus 813F

OCC Blackbird 736K

OCC Missing Link 830M

OCC Dixie Erica 776M

Basin Rainmaker 654X

Dixie Erica of C H 1019

OCC Moderator 825M

OCC Pollyanna 683X

Production EPDs			
CED	BW	WW	YW
6	1.6	44	80

Maternal EPDs			\$Values
CEM	Milk	\$EN	\$W
1	20	3	34

A high performing Accolade daughter from the Pollyanna family. Dam is a Focus 813F and ancestry includes 636B, 683X, and 944H. A rare opportunity here! Sells open.



OCC Dixie Erica 744K

Calved 4/11/22 20617357

OCC Work of Art 766W

OCC Best Yet 766B

OCC Dixie Erica 817Y

OCC Legacy 839L

OCC Dixie Erica 727G

OCC Dixie Erica 742A

OCC Great Plains 943G

OCC Dixie Erica 662J

OCC Eureka 865E

OCC Dixie Erica 612H

OCC Echelon 857E

OCC Dixie Erica 960E

OCC Wholesome 667W

OCC Dixie Erica 704X

Production EPDs			
CED	BW	WW	YW
5	1.7	41	78

Maternal EPDs			\$Values
CEM	Milk	\$EN	\$W
-1	23	6	33

A Best Yet daughter with moderate birth and very good weaning and yearling performance. Dam is an attractive young Legacy daughter. Sells open.



OCC Juanada 752K

Calved 4/12/22 20617359

OCC Homer 650H

OCC Rear End 751R

FCC Revolution Rose 995N

FEATURED LOT

OCC Accolade 825A

OCC Juanada 733D

OCC Juanada 831A

OCC Focus 813F

OCC Dixie Erica 816B

OCC Joker 620J

OCC Revolution Rose 887H

OCC Paxton 730P

OCC Dixie Erica 771R

OCC Echelon 857E

OCC Juanada 826R

Production EPDs			
CED	BW	WW	YW
5	1.7	40	68

Maternal EPDs				\$Values
CEM	Milk	\$EN	\$W	
3	21	14	41	

Rear End daughters are consistent for moderate size, quiet disposition, great udders, thickness, and fleshing ability. The 733D dam is deep and wide, and from the family that produced Jet Stream. Sells open.



OCC Dixie Erica 755K

Calved 4/12/22 20617362

OCC Paxton 730P

OCC Accolade 825A

OCC Dixie Erica 771R

OCC Zodiac 655Z

OCC Dixie Erica 673D

OCC Dixie Erica 843A

OCC Focus 813F

OCC Blackbird 736K

OCC Missing Link 830M

OCC Dixie Erica 776M

OCC Umax 820U

OCC Dixie Erica 628W

OCC No Problems 52N

Chloe Dixie Erica 7313

Production EPDs			
CED	BW	WW	YW
8	0.6	44	77

Maternal EPDs				\$Values
CEM	Milk	\$EN	\$W	
-1	20	8	37	

A top performing Accolade daughter out of a Zodiac sired dam! Maternal granddam 843A is an ultra low-birth, high-efficiency cow. Sells open.



OCC Pollyanna 803K

Calved 5/13/22 20606667

OCC Awakening 893A

OCC-ALC Style with Ease

ALC Juanada 701

FEATURED LOT

OCC Sentinel 714S

OCC Pollyanna 805C

OCC Pollyanna 744Y

OCC No Problems 52N

OCC Dixie Erica 617P

OCC X-cite 825X

ALC Dixie Erica 218

OCC Focus 813F

OCC Blackcap 804M

OCC Paxton 730P

OCC Pollyanna 944H

Production EPDs			
CED	BW	WW	YW
10	-0.8	39	67

Maternal EPDs				\$Values
CEM	Milk	\$EN	\$W	
3	21	14	36	

An attractive Style with Ease daughter out of the smooth, slick haired, great uddered 805C cow. Note her Pollyanna cow family roots - 944H and 744Y. Top 2% of the breed for \$EN. Sells open.



OCC Dixie Erica 961J

Calved 11/3/21 20621034

OCC Zodiac 655Z

OCC Howdy 706H

OCC Erica Lassie 688A

OCC Legacy 839L

OCC Dixie Erica 624H

OCC Dixie Erica 742A

OCC Umax 820U

OCC Dixie Erica 628W

OCC Echelon 857E

OCC Erica Lassie 729S

OCC Echelon 857E

OCC Dixie Erica 960E

OCC Wholesome 667W

OCC Dixie Erica 704X

Production EPDs			
CED	BW	WW	YW
9	0.2	33	59

Maternal EPDs				\$Values
CEM	Milk	\$EN	\$W	
2	19	16	28	

A stout and attractive heifer sired by a Zodiac son. Dam is a smooth-made Legacy daughter. Top 2% of the breed for \$EN. Sells open.



OCC Juanada 9102J

Calved 10/14/21 20621035

OCC Backstop 888B

OCC Eureka 865E

Blackbird of R R 1204

FEATURED LOT

OCC Emblazon 854E

OCC Juanada 663R

OCC Juanada 775C

D H D Traveler 6807

Revolution Rose of R R 9239

PBC 707 1M F0203

Blackbird of R R 7023

D H D Traveler 6807

Dixie Erica of C H 1019

N Bar Emulation EXT

OCC Juanada 709V

Production EPDs			
CED	BW	WW	YW
4	2	36	55

Maternal EPDs				\$Values
CEM	Milk	\$EN	\$W	
-2	23	12	37	

Eureka! This ET heifer is a rare find. Her dam is the 663R cow that's still in the herd at 18 years of age. The productive, great uddered Eureka daughters will never go out of style. Sells open.



CM Primrose 10T1

Calved 9/23/21 20619188

OCC Focus 813F

OCC Paxton 730P

OCC Blackbird 736K

OCC Rear End 751R

RTR Primrose 15R5

RTR Primrose 6T3

Basin Rainmaker 654X

Dixie Erica of C H 1019

OCC Great Plains 943G

OCC Blackbird 824G

OCC Homer 650H

FCC Revolution Rose 995N

Papa Forte 1921

RTR Primrose 801K

Production EPDs			
CED	BW	WW	YW
9	0.1	38	62

Maternal EPDs				\$Values
CEM	Milk	\$EN	\$W	
3	20	17	39	

A thick & stout Paxton daughter out of an attractive and great uddered Rear End x Papa Forte dam. A fall born heifer held over for spring breeding. Top 1% for \$EN. Sells open. Consigned by Clyde Mattson.



CM Babine 195J

Calved 10/15/21 20619187

OCC Homer 650H
OCC Rear End 751R
 FCC Revolution Rose 995N

Churchill of Wye
CM Churchill's Babine 881F
 Newports Babine 90

OCC Focus 813F
 OCC Dixie Erica 816B
 OCC Joker 620J
 OCC Revolution Rose 887H
 Lodge of Wye
 Colleen of Wye
 Alap of Wye UMF 8329
 Blackbird of Wye UMF 8711

Production EPDs			
CED	BW	WW	YW
2	0.5	31	42

Maternal EPDs				\$Values
CEM	Milk	\$EN	\$W	
5	15	21	\$W	28

A stout, big volume Rear End daughter with a unique pedigree. Her dam is a Churchill of Wye daughter with a straight old-school Wye pedigree. Excellent udder quality and efficient grass-based genetics from both sire and dam. A fall born heifer held over for spring breeding. Sells open. Consigned by Clyde Mattson.



OCC Dixie Erica 617J

Calved 3/10/21 20296037

OCC Emblazon 854E
OCC Jet Stream 825J
 OCC Juanada 968G
FEATURED LOT
 OCC No Problems 52N
OCC Dixie Erica 601B
 Chloe Dixie Erica 7313

D H D Traveler 6807
 Dixie Erica of C H 1019
 OCC Eureka 865E
 OCC Juanada 774A
 OCC Focus 813F
 OCC Dixie Erica 816B
 Papa Forte 1921
 OCC Dixie Erica 826J

Production EPDs			
CED	BW	WW	YW
10	0.1	34	59

Maternal EPDs				\$Values
CEM	Milk	\$EN	\$W	
3	20	17	\$W	34

A calving ease and cow efficiency specialist here. Jet Stream daughter out of a maternal sister to the great 628W cow. Top 1% for \$EN. Due to calve in early to mid June 2023 to OCC Heifer Bull 632H (20313543).



OCC Dixie Erica 709J

Calved 3/29/21 20296063

OCC X-tra Easy 708X
OCC Alpha 700A
 OCC Dixie Erica 806Y
 OCC Focus 813F
OCC Dixie Erica 669G
 OCC Dixie Erica 806Y

OCC No Problems 52N
 OCC Dixie Erica 678T
 OCC Jet Stream 825J
 OCC Dixie Erica 607P
 Basin Rainmaker 654X
 Dixie Erica of C H 1019
 OCC Jet Stream 825J
 OCC Dixie Erica 607P

Production EPDs			
CED	BW	WW	YW
10	-1	33	61

Maternal EPDs				\$Values
CEM	Milk	\$EN	\$W	
6	22	12	\$W	31

This nice Alpha 700A daughter has a very unique pedigree. Note that she's double bred to the great 806Y cow. Due to calve in early August 2023 to OCC Heifer Bull 632H (20313543).



OCC Pollyanna 613J

Calved 3/10/21 20296035

OCC Headliner 661H
OCC Moderator 825M
 OCC Dixie Erica 845K

OCC Jet Stream 825J
OCC Pollyanna 685G
 OCC Pollyanna 748Z

OCC Emblazon 854E
 OCC Juanada 858F
 OCC Emblazon 854E
 OCC Dixie Erica 960H
 OCC Emblazon 854E
 OCC Juanada 968G
 OCC Rear End 751R
 OCC Pollyanna 944H

Production EPDs			
CED	BW	WW	YW
9	0.1	31	53

Maternal EPDs				\$Values
CEM	Milk	\$EN	\$W	
6	22	15	\$W	29

An attractive Moderator daughter from the Pollyanna family that's triple bred to Emblazon. Her dam is a Jet Stream daughter out of an extra stout Rear End dam. Due to calve in May 2023 to OCC Heifer Bull 632H (20313543).



OCC Evonne 642J

Calved 3/16/21 20296044

OCC Umax 820U
OCC Zodiac 655Z
 OCC Dixie Erica 628W
FEATURED LOT
 OCC Rear End 751R
OCC Evonne 806A
 BHA Evonne 180

OCC Paxton 730P
 OCC Dixie Erica 801M
 OCC Practical 841P
 Chloe Dixie Erica 7313
 OCC Homer 650H
 FCC Revolution Rose 995N
 OCC Focus 813F
 Miss Bonanza 9005

Production EPDs			
CED	BW	WW	YW
5	0.7	34	59

Maternal EPDs				\$Values
CEM	Milk	\$EN	\$W	
-1	15	17	\$W	26

Zodiac daughters out of Rear End sired dams excel in fleshing ability and cow efficiency. Top 1% of the breed for \$EN. Due to calve in May 2023 to OCC Heifer Bull 632H (20313543).



OCC Dixie Erica 731J

Calved 4/4/21 20306309

OCC Paxton 730P
OCC Epitome 630E
 OCC Dixie Erica 730W
FEATURED LOT
 OCC Zodiac 655Z
OCC Dixie Erica 777D
 OCC Dixie Erica 826A

OCC Focus 813F
 OCC Blackbird 736K
 OCC Rear End 751R
 OCC Dixie Erica 776M
 OCC Umax 820U
 OCC Dixie Erica 628W
 OCC Paxton 730P
 OCC Dixie Erica 771R

Production EPDs			
CED	BW	WW	YW
10	-0.4	46	78

Maternal EPDs				\$Values
CEM	Milk	\$EN	\$W	
1	17	14	\$W	38

A stout Epitome daughter out of a Zodiac sired dam. Triple bred to Paxton. Top 2% for \$EN. Due to calve in May 2023 to OCC Heifer Bull 632H (20313543).



OCC Juanada 761J

Calved 4/10/21 20296938

OCC Alpha 700A
OCC Fortress 744F
OCC Dixie Erica 752A

OCC Paxton 730P
OCC Juanada 681C
OCC Juanada 663R

OCC X-tra Easy 708X
OCC Dixie Erica 806Y
OCC You Sleep 638Y
OCC Dixie Erica 710X
OCC Focus 813F
OCC Blackbird 736K
OCC Emblazon 854E
OCC Juanada 775C

Production EPDs			
CED	BW	WW	YW
6	1.7	45	77

Maternal EPDs				\$Values
CEM	Milk	\$EN	\$W	
0	24	8	43	

Fortress is a high performing Alpha son that was the high selling bull is our 2020 sale. Dam of lot 160 is a daughter of the 663R donor cow. Due to calve in May 2023 to OCC Heifer Bull 632H (20313543).



OCC Juanada 790J

Calved 4/1/21 20306324

OCC Paxton 730P
OCC You're Exact 763Y
OCC Pollyanna 944H

OCC Work of Art 766W
OCC Juanada 734C
OCC Juanada 709Z

OCC Focus 813F
OCC Blackbird 736K
OCC Anchor 771A
OCC Pollyanna 979F
OCC Great Plains 943G
OCC Dixie Erica 662J
OCC Umax 820U
OCC Juanada 603W

Production EPDs			
CED	BW	WW	YW
12	-0.7	33	57

Maternal EPDs				\$Values
CEM	Milk	\$EN	\$W	
5	19	15	32	

The You're Exact 763Y daughters are excellent and deserve more recognition. Dam is a very nice Work of Art daughter. Top 2% for \$EN. Due to calve in May 2023 to OCC Heifer Bull 632H (20313543).



RTR Primrose 6R9

Calved 9/22/19 19824784

OCC Emblazon 854E
OCC Jet Stream 825J
OCC Juanada 968G

OCC Rear End 751R
RTR Primrose 15R5
RTR Primrose 6T3

D H D Traveler 6807
Dixie Erica of C H 1019
OCC Eureka 865E
OCC Juanada 774A
OCC Homer 650H
FCC Revolution Rose 995N
Papa Forte 1921
RTR Primrose 801K

Production EPDs			
CED	BW	WW	YW
6	1	39	60

Maternal EPDs				\$Values
CEM	Milk	\$EN	\$W	
3	23	15	42	

An attractive, great uddered Jet Stream daughter that's a maternal sister to lot 153. Her dam is a beautiful Rear End x Forte bred cow. Top 2% of the breed for \$EN. Bred on 12/31/22 to OCC Paxton 730P. Consigned by Clyde Mattson.



OCC Dixie Erica 774J

Calved 4/20/21 20306318

OCC Moderator 825M
OCC Equal 685E
OCC Pollyanna 638U

OCC Transformation 680T
OCC Dixie Erica 800E
OCC Dixie Erica 903B

OCC Headliner 661H
OCC Dixie Erica 845K
OCC Great Plains 943G
OCC Pollyanna 944H
OCC Focus 813F
OCC Dixie Erica 603N
OCC Work of Art 766W
OCC Dixie Erica 605K

Production EPDs			
CED	BW	WW	YW
14	-2.5	29	48

Maternal EPDs				\$Values
CEM	Milk	\$EN	\$W	
9	25	13	34	

An ultra low-birth Equal daughter with great maternal ancestry throughout her pedigree. Dam is a very nice 680T daughter. Top 3% for \$EN. Due to calve in May 2023 to OCC Heifer Bull 632H (20313543).



OCC Dixie Erica 815J

Calved 5/9/21 20298128

OCC Paxton 730P
OCC Accolade 825A
OCC Dixie Erica 771R

OCC Linebred 661L
OCC Dixie Erica 622C
OCC Dixie Erica 821A

OCC Focus 813F
OCC Blackbird 736K
OCC Missing Link 830M
OCC Dixie Erica 776M
OCC Homer 650H
OCC Dixie Erica 686J
OCC Rear End 751R
OCC Dixie Erica 706S

Production EPDs			
CED	BW	WW	YW
2	3.7	50	83

Maternal EPDs				\$Values
CEM	Milk	\$EN	\$W	
-3	22	5	37	

This Accolade daughter has very impressive weaning and yearling EPDs. Dam is a deep flanked Linebred daughter. Due to calve in early to mid June 2023 to OCC Heifer Bull 632H (20313543).



OCC Vanessa 609K

Calved 3/9/22 Red Angus - 4738797

PCC Colorado Hobo
OCC No Doubt 622N
OCC Vanessa 601L

OCC Zodiac 655Z
OCC Vanessa 760E
OCC Vanessa 770A

BUF CRK Hobo 1961
RKJ Hero 433 804
OCC Honesty 962H
Leachman Vanesa 5900
OCC Umax 820U
OCC Dixie Erica 628W
OCC X-tra Duty 696X
OCC Vanessa 677U

Production EPDs			
CED	BW	WW	YW
14	-2.7	48	76

Maternal EPDs				\$Values
CEM	Milk	HB	ProS	
5	17	38	61	

An impressive black-hided Red Angus heifer sired by No Doubt and out of a Zodiac daughter! A unique and rare Red Angus pedigree. Low-birth with solid weaning and yearling numbers. She carries the red gene. Sells open.



OCC Miss 306K

Calved 3/11/22 Angus II

OCC Paxton 730P
OCC You're Exact 763Y
OCC Pollyanna 944H

OCC X-tra Easy 708X
OCC Miss 317F
OCC Miss 337D

OCC Focus 813F
OCC Blackbird 736K
OCC Anchor 771A
OCC Pollyanna 979F
OCC No Problems 52N
OCC Dixie Erica 678T
OCC Paxton 300X
OCC Miss 363Z

An attractive You're Exact daughter out of an X-tra Easy sired dam. Great Angus II cow family. Sells open.



OCC Miss 322K

Calved 3/20/22 Angus II

OCC Alpha 700A
OCC Fortress 744F
OCC Dixie Erica 752A

FEATURED LOT
OCC Rear End 751R
OCC Miss 311Z
OCC Miss Eureka 522N

OCC X-tra Easy 708X
OCC Dixie Erica 806Y
OCC You Sleep 638Y
OCC Dixie Erica 710X
OCC Homer 650H
FCC Revolution Rose 995N
OCC Eureka 865E
OCC Miss Anchor 462F

Loads of stoutness and performance in this pedigree. Sired by Fortress, the high selling bull in our 2020 auction, and out of the powerful Rear End daughter 311Z! Sells open.



OCC Miss 369K

Calved 4/8/22 Angus II

OCC Paxton 730P
OCC You're Exact 763Y
OCC Pollyanna 944H

OCC Practical 841P
OCC Miss 314W
OCC Miss 340S

OCC Focus 813F
OCC Blackbird 736K
OCC Anchor 771A
OCC Pollyanna 979F
OCC Focus 813F
OCC Juanada 968G
OCC Normalizar 842N
OCC Miss 321M

Another solid You're Exact daughter from a proven cow family. Her dam is still in production at 14 years of age. Sells open.



OCC Miss 380K

Calved 4/8/22 Angus II

OCC Zodiac 655Z
OCC Good As There Is 642G
OCC Dixie Erica 745A

OCC Accolade 825A
OCC Miss 335E
OCC Miss 103B

OCC Umax 820U
OCC Dixie Erica 628W
OCC Wholesome 667W
OCC Dixie Erica 714X
OCC Paxton 730P
OCC Dixie Erica 771R
OCC Echelon 857E
OCC Miss 343Z

An attractive heifer sired by "Good As There Is", an impressive Zodiac son from our 2021 sale. Dam is a powerful Accolade daughter from a solid cow family. Sells open.



OCC Miss 321K

Calved 3/23/22 Angus II

OCC Big Time 746Z
OCC Confidence 820C
OCC Dixie Erica 628W

OCC Paxton 300X
OCC Miss 316C
OCC Miss 316Y

OCC Rear End 751R
OCC Dixie Erica 771R
OCC Practical 841P
Chloe Dixie Erica 7313
OCC Paxton 730P
OCC Miss Emblazon 512L
OCC Rear End 751R
OCC Miss 312W

The Confidence 820C calves are impressive. He's a maternal brother to Zodiac and Blueprint. The dam of lot 167 is a high capacity Paxton x Rear End cow and she's a looker. Sells open.



OCC Miss 342K

Calved 3/31/22 15/16 Angus II, 1/16 Fleckvieh

OCC Work of Art 766W
OCC Best Yet 766B
OCC Dixie Erica 817Y

OCC Gulf Stream 183Z
OCC Miss 361G
OCC Miss 321D

OCC Great Plains 943G
OCC Dixie Erica 662J
OCC Eureka 865E
OCC Dixie Erica 612H
OCC Jet Stream 939W
OCC Toni 134T
OCC Eureka 482Z
OCC Miss Homer 321Y

A very nice Best Yet daughter that's 1/16 Fleckvieh but we included her with the Angus II heifers. Dam is a beautiful young Gulf Stream daughter. Sells open.



OCC Miss 379K

Calved 4/21/22 Angus II

OCC Rear End 751R
OCC Big Time 746Z
OCC Dixie Erica 771R

FEATURED LOT
OCC Miss 322X
OCC Prestige 672P
OCC Miss Eureka 522N

OCC Homer 650H
FCC Revolution Rose 995N
OCC Missing Link 830M
OCC Dixie Erica 776M
OCC Headliner 661H
OCC Dixie Erica 816B
OCC Eureka 865E
OCC Miss Anchor 462F

A very stout Big Time daughter out of the great 322X cow. A rare opportunity here. Sells open.



OCC Miss 394K

Calved 4/22/22 Angus II

OCC Zodiac 655Z
OCC Good As There Is 642G
OCC Dixie Erica 745A

OCC No Problems 52N
OCC Miss 387B
OCC Miss 413Z

OCC Umax 820U
OCC Dixie Erica 628W
OCC Wholesome 667W
OCC Dixie Erica 714X
OCC Focus 813F
OCC Dixie Erica 816B
OCC Rear End 751R
OCC Miss Eureka 522N

Another excellent "Good As There Is" daughter and one of the first offered for sale. Dam is a smooth-made, easy fleshing No Problems daughter. Sells open.



OCC Miss 396K

Calved 3/29/22

Angus II

OCC Paxton 730P

OCC You're Exact 763Y

OCC Pollyanna 944H

OCC No Problems 52N

OCC Miss 320D

OCC Miss 350B

OCC Focus 813F

OCC Blackbird 736K

OCC Anchor 771A

OCC Pollyanna 979F

OCC Focus 813F

OCC Dixie Erica 816B

OCC You're Stout 677Y

OCC Miss Eureka 411M

Another top You're Exact daughter. Her very productive dam is sired by No Problems, a great female sire that's a full brother to Homer 650H. Sells open.



OCC Miss 478J

Calved 10/26/21

Angus II

OCC Awakening 893A

OCC-ALC Style with Ease

ALC Juanada 501

OCC Alpha 700A

OCC Miss 397G

OCC Miss 377E

OCC No Problems 52N

OCC Dixie Erica 617P

OCC X-cite 825X

ALC Dixie Erica 218

OCC X-tra Easy 708X

OCC Dixie Erica 806Y

OCC Transformation 680T

OCC Miss Mitchell 436W

A good Style with Ease daughter out of an Alpha sired dam. She'll make a productive and attractive cow. A fall born heifer held over for spring breeding. Sells open.



OCC Miss 327J

Calved 3/17/21

Angus II

OCC No Problems 52N

OCC X-tra Easy 708X

OCC Dixie Erica 678T

OCC Certain 629C

OCC Miss 410F

OCC Miss 402D

OCC Focus 813F

OCC Dixie Erica 816B

OCC Traveler 723Z

OCC Dixie Erica 613L

OCC No Problems 52N

OCC Pollyanna 847A

OCC Zar 869Z

OCC Miss 397B

A nice X-tra Easy daughter with a solid calving ease pedigree. She's double bred to No Problems and the maternal granddam is a Zar daughter. Due to calve in May 2023 to OCC Hallmark 705H (20380604).



OCC Miss 405J

Calved 4/19/21

Angus II

OCC Paxton 730P

OCC Accolade 825A

OCC Dixie Erica 771R

OCC Jet Stream 825J

OCC Miss 348A

OCC Miss 407Y

OCC Focus 813F

OCC Blackbird 736K

OCC Missing Link 830M

OCC Dixie Erica 776M

OCC Emblazon 854E

OCC Juanada 968G

OCC Paxton 730P

OCC Miss Emblazon 512L

A highly attractive Accolade daughter from a cow family noted for longevity. Her dam is a 10 year old Jet Stream daughter. Due to calve in July 2023 to OCC Hallmark 705H (20380604).



OCC Miss 411K

Calved 4/30/22

Angus II

OCC Echelon 857E

OCC Front Range 827F

OCC Blackcap 906B

OCC Zodiac 655Z

OCC Miss 425C

OCC Miss 506P

D H D Traveler 6807

Dixie Erica of C H 1019

OCC Transformation 680T

OCC Blackcap 804M

OCC Umax 820U

OCC Dixie Erica 628W

OCC Eureka 865E

OCC Miss Rito 203 306Y

Many great "foundation" sires appear up close in this pedigree, including Echelon, Eureka, and Traveler 6807. And her dam is a Zodiac daughter! Sells open.



OCC Miss 484J

Calved 12/4/21

Angus II

OCC Big Time 746Z

OCC Confidence 820C

OCC Dixie Erica 628W



OCC Zodiac 655Z

OCC Miss 401F

OCC Miss 416W

OCC Rear End 751R

OCC Dixie Erica 771R

OCC Practical 841P

OCC Dixie Erica 776M

OCC Umax 820U

OCC Dixie Erica 628W

OCC Missing Link 830M

OCC Miss 390R

Sired by Confidence, her dam is a Zodiac daughter making her double bred to the great 628W cow. A fall born heifer held over for spring breeding. Sells open.



OCC Miss 369J

Calved 3/29/21

Angus II

OCC Paxton 730P

OCC You're Exact 763Y

OCC Pollyanna 944H

OCC Zar 869Z

OCC Miss 348E

OCC Miss 318C

OCC Focus 813F

OCC Blackbird 736K

OCC Anchor 771A

OCC Pollyanna 979F

OCC Homer 650H

OCC Dixie Erica 642U

OCC Y Not 388Y

OCC Valarie 312Y

A You're Exact daughter from a top producing, heavy milking cow family. Due to calve in May 2023 to OCC Hallmark 705H (20380604).



OCC Miss 411J

Calved 4/25/21

Angus II

OCC Awakening 893A

OCC-ALC Style with Ease

ALC Juanada 501

OCC Big Time 746Z

OCC Miss 308G

OCC Miss 334Z

OCC No Problems 52N

OCC Dixie Erica 617P

OCC X-cite 825X

ALC Dixie Erica 218

OCC Rear End 751R

OCC Dixie Erica 771R

OCC Paxton 300X

OCC Miss 337U

A Style with Ease daughter out of a young, Big Time sired dam. The maternal granddam 334Z is easy fleshing with ideal udder quality. Due to calve in May 2023 to OCC Hallmark 705H (20380604).



OCC Miss 416J

Calved 5/6/21

Angus II

OCC Paxton 730P

OCC Accolade 825A

OCC Dixie Erica 771R

OCC Accolade 825A

OCC Miss 355E

OCC Miss 358B

OCC Focus 813F

OCC Blackbird 736K

OCC Missing Link 830M

OCC Dixie Erica 776M

OCC Paxton 730P

OCC Dixie Erica 771R

OCC Wholesome 667W

OCC Miss 319X

A deep bodied Angus II heifer that's closely linebred to Accolade. Due to calve in May 2023 to OCC Front Range 827F (20035899).



OCC Miss 422H

Calved 9/24/20

Angus II

OCC Legend 616L

OCC Legend's Reflection

OCC Miss 316N

OCC Rear End 751R

OCC Miss 311Z

OCC Miss Eureka 522N

OCC Emblazon 854E

OCC Blackbird 632J

OCC Honesty 962H

OCC Miss 6807 332C

OCC Focus 813F

FCC Revolution Rose 995N

OCC Eureka 865E

OCC Miss Anchor 462F

This heifer is sired by Legend's Reflection, an Angus II son of Legend. Her dam is the powerful 311Z cow. Due to calve in July 2023 to OCC Hallmark 705H (20380604).



OCC Miss 103K

Calved 3/6/22

1/4 Fleckvieh, 3/4 Angus

OCC Paxton 730P

OCC You're Exact 763Y

OCC Pollyanna 944H

OCC Blaze Jetfleck 279Z

OCC Miss 126D

MFI Black Lolita 9267

OCC Focus 813F

OCC Blackbird 736K

OCC Anchor 771A

OCC Pollyanna 979F

OCC Jet Stream 825J

Miss Arnold F9708

DDA Profit Center 22F

MFI Lolita 7114

A stout, 1/4 Fleckvieh daughter of You're Exact from a powerful cow family. Sells open.



OCC Miss 108K

Calved 3/13/22

3/8 Fleckvieh, 5/8 Angus

OCC Paxton 730P

OCC Extra Power 307E

OCC Miss 404R

OCC Exceptional Blaze 149E

OCC Miss 147H

OCC Miss 129B

OCC Focus 813F

OCC Blackbird 736K

OCC Eureka 865E

OCC Miss Anchor 488E

OCC Anvil 809A

OCC Scarlett 111S

OCC Cosmic 154Y

OCC Miss Paxton 157X

We used Extra Power 307E heavily on Fleck-Angus cows and love the results. Dam is sired by 149E. Sells open.



OCC Miss 127K

Calved 3/20/22

1/8 Fleckvieh, 7/8 Angus

OCC Zodiac 655Z

OCC Do It All 656D

OCC Dixie Erica 827A

OCC Wide-Body 838W

OCC Miss 181Y

OCC Legend's Naomi 126N

OCC Umax 820U

OCC Dixie Erica 628W

OCC Paxton 730P

OCC Dixie Erica 771R

OCC Kanga 886K

OCC Dixie Erica 867K

OCC Legend 616L

Miss Arnold E5562

A rare opportunity to add an excellent Fleck-Angus daughter of OCC Do It All 656D to your herd. She's very good! Sells open.



OCC Miss 136K

Calved 3/26/22

3/16 Fleckvieh, 13/16 Angus

OCC Anvil 809A

OCC Exceptional Blaze 149E

OCC Scarlett 111S

OCC You're Exact 763Y

OCC Miss 135E

OCC Miss 145B

OCC Missing Link 830M

FCC Blackcap Lady 3810

OCC Jet Stream 825J

OCC Miss Arnold 134M

OCC Paxton 730P

OCC Pollyanna 944H

OCC Cosmic 154Y

OCC Miss Paxton 155W

We've been very impressed by the Exceptional Blaze 149E calves. OCC Scarlett 111S, the dam of 149E, is easily the highest producing cow on the ranch for weaning and yearling growth. Sells open.



OCC Miss 139K

Calved 3/28/22

3/16 Fleckvieh, 13/16 Angus

OCC Zodiac 655Z

OCC Zodiac's Jetfleck 251H

OCC Priscilla 158P

OCC Y Not 388Y

OCC Miss 117B

OCC Miss 129Y

OCC Umax 820U

OCC Dixie Erica 628W

OCC Jet Stream 825J

Miss Arnold E1007

OCC Night Watch 902N

OCC Juanada 723S

OCC Mitchell 831M

OCC Miss 180P

The 251H bull is a Zodiac son that's siring an outstanding set of calves. His dam, 158P, produced until she was 17 years of age which isn't unusual for these Fleck-Angus cows. Sells open.



OCC Miss 141K

Calved 3/31/22

3/8 Fleckvieh, 5/8 Angus

OCC Anvil 809A

OCC Exceptional Blaze 149E

OCC Scarlett 111S

OCC Kiddo 832K

OCC Miss 194Y

Miss Arnold E5562

OCC Missing Link 830M

FCC Blackcap Lady 3810

OCC Jet Stream 825J

OCC Miss Arnold 134M

OCC Emblazon 854E

OCC Juanada 957F

Panzer

Miss Arnold A5225

Another Exceptional Blaze 149E daughter with loads of promise. She's double bred to the foundation Miss Arnold E5562 cow. Her dam is a powerful 12 year old daughter of Kiddo. Sells open.



OCC Miss 167K

Calved 4/18/22 1/4 Fleckvieh, 3/4 Angus

OCC Zodiac 655Z
OCC Zodiac's Jetfleck 251H
OCC Priscilla 158P

OCC Y Not 388Y
OCC Miss 138C
MFI Black Lolita 8086

OCC Umax 820U
OCC Dixie Erica 628W
OCC Jet Stream 825J
Miss Arnold E1007
OCC Night Watch 902N
OCC Juanada 723S
OCC Paxton 730P
MFI Lolita 6190

Another daughter of 251H and out of a powerful granddaughter of Paxton. Great producing ability and longevity in her family. Sells open.



OCC Miss 191K

Calved 4/19/22 1/8 Fleckvieh, 7/8 Angus

OCC Jet Stream 825J
OCC Double Impact 722D
OCC Dixie Erica 771R

OCC Jet Stream 825J
OCC Miss 150A
OCC Miss 194Y

OCC Emblazon 854E
OCC Juanada 968G
OCC Missing Link 830M
OCC Dixie Erica 776M
OCC Emblazon 854E
OCC Juanada 968G
OCC Kiddo 832K
Miss Arnold E5562

A very nice Double Impact daughter that's double bred to Jet Stream. Her dam is a maternal sister to the heifer that sells as lot 189. Sells open.



OCC Miss 336K

Calved 3/29/22 1/8 Fleckvieh, 7/8 Angus II

OCC Zodiac 655Z
OCC Zodiac's Jetfleck 251H
OCC Priscilla 158P

OCC No Problems 52N
OCC Miss 397B
OCC Miss 411Z

OCC Umax 820U
OCC Dixie Erica 628W
OCC Jet Stream 825J
Miss Arnold E1007
OCC Focus 813F
OCC Dixie Erica 816B
OCC Jet Stream 825J
OCC Miss Anchor 462F

A stout 251H daughter out a top producing Angus II cow. Great performance and udder quality here. Sells open.



OCC Miss 373K

Calved 4/10/22 1/8 Fleckvieh, 7/8 Angus II

OCC Zodiac 655Z
OCC Zodiac's Jetfleck 251H
OCC Priscilla 158P

OCC Little Big Man 639Z
OCC Miss 300D
OCC Flo 595R

OCC Umax 820U
OCC Dixie Erica 628W
OCC Jet Stream 825J
Miss Arnold E1007
OCC Paxton 730P
OCC Dixie Erica 605K
Troycastle Ali 2
OCC Flo 302V

Another good 251H sired heifer. Her Angus II dam is a daughter of Little Big Man, a Paxton son with incredible mass and volume. Sells open.



OCC Miss 252J

Calved 11/6/21 1/32 Fleckvieh, 31/32 Angus

OCC Moderator 825M
OCC Equal 685E
OCC Pollyanna 638U

OCC Alpha 700A
OCC Miss 189F
OCC Miss 199C

OCC Headliner 661H
OCC Dixie Erica 845K
OCC Great Plains 943G
OCC Pollyanna 944H
OCC X-tra Easy 708X
OCC Dixie Erica 806Y
OCC Unmistakable 946U
OCC Rachel 162R

This Equal daughter is a very high percentage Angus heifer. Her dam is a beautiful young Alpha daughter. A fall born heifer held over for spring breeding. Sells open.



OCC Miss 298J

Calved 10/4/21 1/4 Fleckvieh, 3/4 Angus

OCC Umax 820U
OCC Zodiac 655Z
OCC Dixie Erica 628W

OCC Jet Stream 825J
OCC Priscilla 158P
Miss Arnold E1107

OCC Paxton 730P
OCC Dixie Erica 801M
OCC Practical 841P
Chloe Dixie Erica 7313
OCC Emblazon 854E
OCC Juanada 968G
LJB Jade AJ6
Miss Arnold C1284

An impressive Zodiac daughter from our ET program. Her dam is the highly proven OCC Priscilla 158P that produced to 17 years of age. A fall born heifer held over for spring breeding. Sells open.



OCC Miss 158J

Calved 4/19/21 3/16 Fleckvieh, 13/16 Angus

OCC Anvil 809A
OCC Exceptional Blaze 149E
OCC Scarlett 111S

OCC Accolade 825A
OCC Miss 143F
OCC Miss 110W

OCC Missing Link 830M
FCC Blackcap Lady 3810
OCC Jet Stream 825J
OCC Miss Arnold 134M
OCC Paxton 730P
OCC Dixie Erica 771R
OCC Rear End 751R
OCC Nellie 125N

This Exceptional Blaze daughter will make an excellent cow. Double bred to Jet Stream and her pedigree also features Paxton and Rear End. Due to calve in May 2023 to OCC Hallmark 705H (20380604).



OCC Miss 283J

Calved 4/28/21 1/4 Fleckvieh, 3/4 Angus

D H D Traveler 6807
OCC Emblazon 854E
Dixie Erica of C H 1019

OCC Legend 616L
OCC Legend's Naomi 126N
Miss Arnold E5562

Q A S Traveler 23-4
Bemindful Maid D H D 0807
PBC 707 1M F0203
Dixie Erica of C H 615
OCC Emblazon 854E
OCC Blackbird 632J
Panzer
Miss Arnold A5225

An Emblazon daughter from our ET program. Her dam was a powerful 1/2 Fleckvieh cow by Legend! A full sister sells as Lot 198. Due to calve in early July 2023 to OCC Hallmark 705H (20380604).



OCC Miss 284J

Calved 5/5/21

1/4 Fleckvieh, 3/4 Angus

D H D Traveler 6807

OCC Emblazon 854E

Dixie Erica of C H 1019

OCC Legend 616L

OCC Legend's Naomi 126N

Miss Arnold E5562

Q A S Traveler 23-4

Bemindful Maid D H D 0807

PBC 707 1M F0203

Dixie Erica of C H 615

OCC Emblazon 854E

OCC Blackbird 632J

Panzer

Miss Arnold A5225

Another Emblazon daughter that's 1/4 Fleckvieh and a full sister to Lot 197. Her maternal granddam, Miss Arnold E5562, was an elite foundation cow in our Fleck-Angus program. Due to calve in early July 2023 to OCC Hallmark 705H (20380604).



OCC-ALC Style with Ease — Raised by Allison Land & Cattle, he's a new-generation calving ease sire that we're using on both heifers and cows. He's double bred to Focus 813F through his sire while his dam is a beautiful Eureka x Echelon bred cow. Top 1% of the breed for CED and BW and top 3% for \$EN. A son sells as lot 136 and daughters sell as lots 150, 176, and 181.



OCC Pollyanna 842Z — An OCC Practical 841P daughter out of the great Pollyanna 944H donor cow. The number of Practical daughters was never large but their influence has been huge. For example, the 628W dam of Zodiac, Blueprint, and Confidence is a Practical daughter!



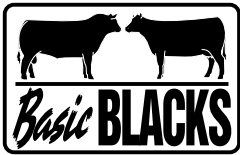
OCC Blackbird 636D — A Zodiac 655Z daughter that is double bred to Paxton 730P.



A Fleckvieh-Angus cow.



OCC Dixie Erica 628W — Dam of OCC Blueprint 632B and OCC Zodiac 655Z.



Ohlde Cattle Co.
1362 2nd Road
Palmer, KS 66962

Address Service Requested

DATED MATERIAL FIRST CLASS

Mail to:

Ohlde Cattle Co.
BASIC BLACKS
BULL & FEMALE SALE
April 17, 2023 • 1 PM
Palmer, Kansas