

OCC Basic Blacks Bull Sale

3rd Monday in April Annually • 1 p.m. • At the ranch near Palmer, Kansas

America's #1 proven source for powerful, easy fleshing, beautifully uddered, maternally efficient Angus.



OCC Dakota 687D — Dakota's Dam was nicknamed "Belly Dragger" Dakota is similar in muscle to his Sire Zodiac but offers a bit more length. He is producing excellent daughters with beautiful udders. Progeny sell in this sale.



OCC Dixie Erica 628W — Dam of Zodiac a 2009 model. Photo at 11 years of age. Top 1% \$EN (18) Mature weight 1,315 lb. Also the Dam OCC Blueprint 632B.



6807 Daughter — 1991 model - OCC Juanada 774A. Top 1% \$EN (18) mature weight 1205 lb. Her influence is in this sale.

Selling 125+ Angus, Angus II & FleckAngus Bulls

2-year-old Forage Fed, Real World bulls

Plus 70+ Registered & Commercial Females

Also selling Private Treaty: 18-month-old Fall Bulls

Industry standard

Ohlde genetics have not only become a household name; OCC genetics have become an "industry standard." The Ohlde-kind are cattle that flesh with ease, they are low maintenance, moderate frame with uniformity and excellent performance on forage. Another OCC benefit is **LONGEVITY** — OCC bulls have the structure and fertility to perform season after season.

Grass-fattening regimes

Commercial producers as well as some purebred breeders have realized the tremendous benefits with OCC genetics. They are much easier fleshing and require a lot less feed than the larger framed or "carcass-type" cattle that are currently being highly promoted. Many U.S. and Argentina producers are successfully using OCC genetics to enhance their grass-fattening regimes. In fact most grass fattening experts say that OCC genetics are the best in America, Argentina, Canada and Mexico.

Proven, consistent producers

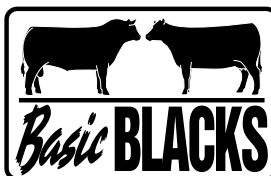
Ohlde-bred cattle are highly accepted, proven, consistent producers that are in large demand by all walks of the cattle industry. From calving ease and vigor, to the superior females with excellent udder quality, to the most-valued OCC bulls that consistently sire calves exactly the way you expect them to.

**Keeping things in balance — moderation,
consistency, predictability and uniformity.**

SALE BOOK REQUESTS

785-630-0522 Trudy cell

Bid online at LiveAuctions.tv or
[SuperiorLivestock.com!](http://SuperiorLivestock.com)



© Basic Blacks is a registered
trademark of Ohlde Cattle Co.

Ohlde Cattle Co.

Tim, Trudy, Jake & Jordon Ohlde
1362 2nd Road • Palmer, KS 66962
785-630-0523 Tim
785-630-0522 Trudy
tim-trudy@ohldecattle.com
www.OhldeCattle.com

Balance Never Goes Out of Style

The Basic Blacks program began with a commitment to producing low birth, strong maternal, cost-efficient performance cattle that are easy fleshing and require minimum maintenance while working in a forage-based environment. Our appreciation for this type of cattle evolved over time and the years of working with large numbers of cattle from several breeds gave us the practical insight into the type of cattle needed to meet our goals.

At Ohlde Cattle Co., balanced, multiple-trait selection has always been the cornerstone of our breeding philosophy. Most cattlemen today would admit that single-trait selection has caused more problems than it's solved. One need only look at the recent past to see now an overemphasis on frame and growth resulted in excessive large

At Ohlde Cattle Co., maternal is more than milk, carcass means more than marbling and performance means more than just pounds weaned.

frame, high maintenance cattle that were not practical or profitable. Despite this awareness, true multiple-trait selection is often done in name only. Witness the number of people who used only milk EPDs when talking about maternal traits or marbling EPDs when discussing carcass sires.

The efficient, functional, forage-loving cow will always be the key to ranch profitability. The variables for creating this animal have always been rather simple. It is man's constant need for "more" that complicates matters. The equation for creating the functional cow focuses on moderate mature size, volume and capacity ("guts"), the ability to flesh easily on grass and calving ease combined with udder quality without worrying too much about growth and carcass traits. This approach results in cow herds that can be profitable with less inputs while also being incredibly versatile (e.g. crossbreeding).

Yes, carcass and growth traits are essential in the cattle business but the basic cow does not have to shoulder all of those responsibilities along with her maternal duties. The constant call to improve carcass and growth traits in the cow herd can throw things seriously out of balance. When attention on the functional cow herd traits is refocused

The fact OCC sires excel in cow \$ENergy EPD value is not a surprise to us but it is reassuring to see that they also do exceedingly well in the areas of BW, CED, Mature Weight and Functional Longevity.

on growth and carcass, the long-term results are never positive. Basic cow herd function is reduced and feed and other inputs must be increased in a futile attempt to salvage profitability.

The knowledge that allows ranchers to recognize and value the efficient and functional cow can be hard-earned but it's not rocket science. It's easy to take our eyes off the prize though when we listen to so many competing industry voices about what cattle should be. Above all else, it's important for the rancher to know what type of cattle he must have to make his operation work efficiently and profitably. When

one breeds cattle to someone else's specifications, it usually makes the rancher's job more difficult.

The Ohlde Cattle Co. vision of the functional cow has resulted in cattle that are easy fleshing, high volume and smaller framed with unparalleled udder quality and an overall attractive phenotype. Ohlde Cattle Co. recognized that cow efficiency and profitability intersect many years ago but the new EPD data is finally documenting that reality for all cattlemen. The fact OCC sires excel in cow energy value is not a surprise to us but it is reassuring to see that they also do exceedingly well in the area of weaned calf. The bottom line is that selection for cow herd traits gets most of the other areas of beef production right without trying too hard. As the hard-to-measure cow herd traits reveal themselves through the new value based EPDs, the true value of these type of cattle becomes apparent.

Three programs to choose from: registered Angus, SimAngus and Angus II*

The Basic Blacks registered Angus program began in earnest in 1986 with the purchase of an elite set of females. These cows met our stringent selection criteria for moderate size, volume, superior fleshing ability, excellent udders with small teats, light birth weight and structural soundness. We also demanded older linebred performance pedigrees, excellent EPDs and production records.

Angus II is the name for our unique high-percentage Angus cattle developed exclusively at Ohlde Cattle Co. They are typically at least 7/8 Angus and offer more consistent fertility, performance and milk production than the registered cattle but with the same or improved calving ease, muscle, carcass quality and fleshing ability. Angus IIs have an Amerifax base and offer very similar genetics to the registered cattle but possess added hybrid vigor and typically sell for a more economical price.

Our SimAngus program is Fleckvieh (Austrian) based with predominately 1/4 or 1/8 Simmental influence with remainder OCC Angus genetics. They are very low birth and easy fleshing with nearly the same mature weight as our other breeds.

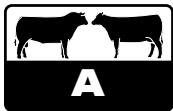


A typical Angus II cow.

* Angus II is a trademark of Ohlde Cattle Co.

MAXIMUM IS NOT OPTIMUM. MODERATION IS KEY.

Basic Blacks Sire Directory



OCC Emblazon 854E

Calved 03-19-95 #+12514348

Legendary!

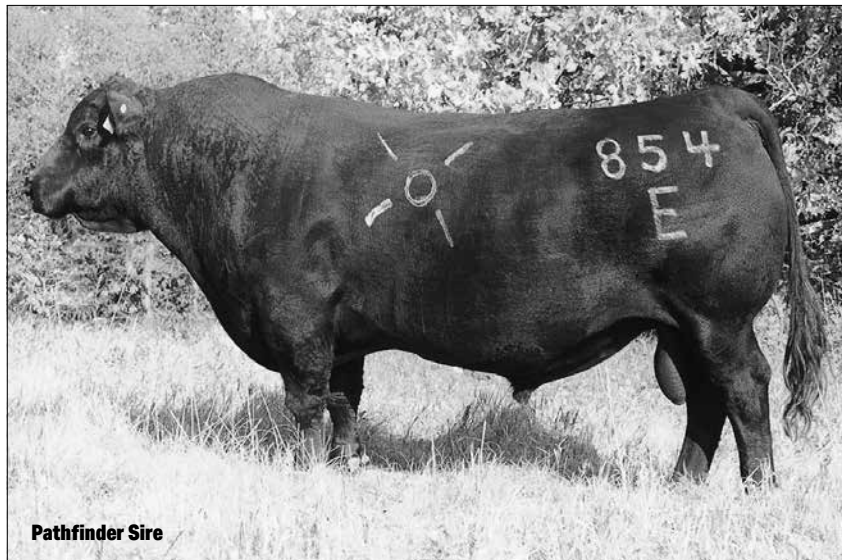
Emblazon has depth, length, volume and muscle.

Emblazon has established an impressive set of low-birth, moderate growth EPDs. The Emblazon daughters are sound easy fleshing females with beautiful udders.

We consider his full sister to be the ideal Angus cow and his dam's contribution to our program remains unequalled.

Emblazon progeny have proven that he is the industry wide, worthy replacement for his Pathfinder sire DHD Traveler 6807.

Emblazon is maintaining his place in history producing impeccable females. He continues to be used heavily even after 28+ years. A sign of a Great One.



Pathfinder Sire

Emblazon Speaks for Himself

- Emblazon sons have topped many bull sales across the country.
- Emblazon has been used to improve functionality by breeders from 10 different breeds.
- Emblazon and his OCC counterparts have stood the test of time and become the "industry standard" for siring the right kind for any environment.
- He is as popular today as he was 25 years ago.
- Not many bulls can stand the test of time through all the fads.

Emblazon = Value

Q A S Traveler 23-4

D H D Traveler 6807

Bemindful Maid D H D 0807

Band 234 of Ideal 3163

Q A S Blackbird Eve 601 1

PBC 707 1M F0203

Bemindful Maid of R R 1079

PBC 707 1M F0203

Dixie Erica of C H 1019

Dixie Erica of C H 615

R R Rito 707

Evocate Princess T

Schearbrook Emulous 11N7

R R Dixie Erica of C H 447

Semen: Call • Certificate: \$50

Production EPDs				Maternal EPDs			
CED	BW	WW	YW	MILK	FL%	\$EN	\$EN%
+12	+4	+45	+71	+16	25%	+19	4%

A legendary bull that has contributed to many successful cow herds!



A 5-year-old Paxton daughter.



OCC Dixie Erica 816B — We consider this full sister to Emblazon and Echelon to be the ideal Angus cow. **Selling many grandsons!**



1019 — Emblazon's dam pictured at 17 years.

Calving ease, power and performance can go together!



OCC Paxton 730P

Calved 03-14-04 14940735

#Basin Rainmaker 654X
OCC Focus 813F
 Dixie Erica of C H 1019

#Basin Rainmaker D S 380U
 Basin Bardolene 423U
 PBC 707 1M F0203
 Dixie Erica of C H 615

O C C Great Plains 943G
OCC Blackbird 736K
 O C C Blackbird 824G

N Bar Emulation EXT
 Dixie Erica of C H 1019
 O C C Anchor 771A
 O C C Blackbird 778A

Production EPDs				Maternal EPDs			
CED	BW	WW	YW	MILK	FL%	\$EN	\$EN%
+13	-1.2	+43	+71	+15	3%	+23	2%

- A very long-bodied, big scrotaled, wide-based bull that is four generations from the 6807 bloodline. Very linebred to F0203. That is making an excellent cross to intensely bred 6807 cattle and still be able to maintain the thickness and phenotype of OCC-bred cattle.
- BW 75 lb., WR 106, YR 111. His Anchor granddam is also the granddam of OCC Legend. Paternal brother to Homer and Hunter. The best combination of calving ease, \$W and \$EN available with fleshing ability and udder quality.
- Producing highly notable progeny in many influential programs with sons and grandsons topping sales around the country.
- Ranks in top 2% \$EN, 10% BW and 5% CED.

Semen: Call • Certificate: \$40



OCC Linebred 661L

Calved 02-13-01 14051770



#OCC Focus 813F
OCC Homer 650H
 +OCC Dixie Erica 816B

#Basin Rainmaker 654X
 +Dixie Erica of CH 1019
 #DHD Traveler 6807
 Dixie Erica of CH 1019

#+OCC Emblazon 854E
OCC Dixie Erica 686J
 +OCC Dixie Erica 816B

#DHD Traveler 6807
 Dixie Erica of CH 1019
 #DHD Traveler 6807
 Dixie Erica of CH 1019

Production EPDs				Maternal EPDs			
CED	BW	WW	YW	MILK	FL%	\$EN	\$EN%
+18	-3.4	+34	+61	+19	15%	+22	3%

- A Homer son that is popular as he sires consistent, low birth, easy fleshing progeny that also exhibit excellent growth and thickness. His daughters, like those of his sire, are great uddered and low maintenance females. His sons have good thickness, growth and scrotal."1019" cow is the great grandam all four times. If you want the "1019" look and function this is the bull.
- Ranks in top 1% CED and BW, and 2% \$EN.

Semen: \$50/straw • Certificate: \$40

Ranks in the Top 2% for \$EN.

Legendary!



Pathfinder Sire



OCC Best Yet 766B

Calved 04-18-2014 18413646

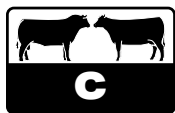
Sire: OCC Work of Art 766W • Dam: OCC Dixie Erica 817Y
 MGS: OCC Eureka 865E1

Production EPDs				Maternal EPDs			
CED	BW	WW	YW	MILK	FL%	\$EN	\$EN%
-2	+3	+54	+101	+24	4%	-14	45%

- A big scrotaled bull, with incredible length, style and balance.
- He has a little more frame than some OCC bulls. Everyone that has seen him wants some semen. He has caused as much excitement as any of our bulls in recent history.
- Even more exciting is that he duplicates his phenotype and performance in every calf. A great future is ahead for this sire.
- Sire of an \$9,500 bull that sold in our 2019 sale who in turn sired the top three heifers in a recent sale that average \$47,000 each.

Semen: \$20/straw • Certificate: \$40

Maternal efficiency, longevity performance and predictability!



OCC X-tra Easy 708X

Calved 09-11-10 17190960

CALVING EASE

Sire: OCC No Problems 52N • Dam: OCC Dixie Erica 678T • MGS: OCC Traveler 723Z

Production EPDs				Maternal EPDs			
CED	BW	WW	YW	MILK	FL%	\$EN	\$EN%
+11	-.7	+38	+73	+18	60%	+21	3%

- A long, thick, smooth-made bull bred several generations for low birth and great efficiency. He has extra scrotal and exceptional fleshing ability.
- His dam is a very fertile, high production cow.
- He has excellent calving ease. We have used him a lot and really like the calves. Many clients are using him as a replacement for Homer. Calving ease for those first-calf heifers and nice replacements.

Semen: \$20/straw • Certificate: \$35

Top 3% for \$EN and 15% Birth.



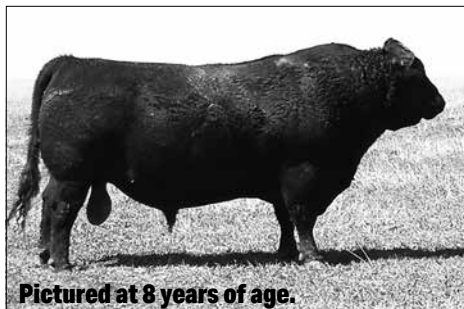
A typical OCC Homer daughter in production.
Tremendous udder quality, ease of fleshing and superior mothering instinct.



OCC Zar 869Z

Calved 09-13-12 17995884

CALVING EASE



Pictured at 8 years of age.

Sire: OCC Homer 650H • Dam: OCC Dixie Erica 642U
MGS: OCC Paxton 730P

Production EPDs				Maternal EPDs			
CED	BW	WW	YW	MILK	FL%	\$EN	\$EN%
-16	-2.4	+30	+55	+15	20%	+26	1%

- A bull we have used on heifers for many years. His daughters are proving his greatness as a female sire. His sons are growthy and powerful with good capacity and fleshing ability. He is proving to be a great replacement for Homer and Eureka. Calving Ease ranks Top 2% CED and 3% BW

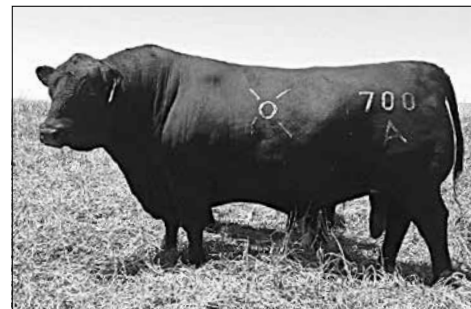
Semen: \$25/straw • Certificate: \$35



OCC Alpha 700A

Calved 03-25-13 18041805

CALVING EASE



Sire: OCC X-tra Easy 708X • Dam: OCC Dixie Erica 806Y
MGS: OCC Jet Stream 825J

Production EPDs				Maternal EPDs			
CED	BW	WW	YW	MILK	FL%	\$EN	\$EN%
+14	-1.8	+34	+63	+22	35%	+19	4%

- Son of X-tra Easy. A younger sire that is consistent low birth. He is a bull that will change fleshing ability, depth and muscle with an attractive phenotype. Excellent uddered cattle throughout his pedigree.
- Calving ease: Ranks top 5% BW, 5% CED and 5% \$EN.

Semen: \$25/straw • Certificate: N/A

Who says adding muscle, fleshing ability & udder quality can't be easy?



OCC Hunter 928H

Calved 09-06-98 #13354639



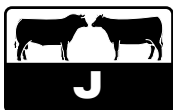
Pathfinder Sire

Sire: OCC Focus 813F • Dam: OCC Dixie Erica 960E
MGS: OCC Anchor 771A

Production EPDs				Maternal EPDs			
CED	BW	WW	YW	MILK	FL%	\$EN	\$EN%
+7	-.4	+30	+53	+21	20%	+22	3%

- Hunter provides calving ease combined with excellent weaning and yearling performance. Incredible combination of \$EN & \$WN.
- His dam is a powerful Anchor daughter with a beautiful combination of capacity, fleshing ability and udder quality.
- His daughters are proving to have the same look and production with great longevity and fleshing ability. His 15-16 year-old-daughters have producers coming back to him.

Semen: \$20/straw • Certificate: \$35



OCC Eureka 865E

Calved 03-22-95 #+12514352

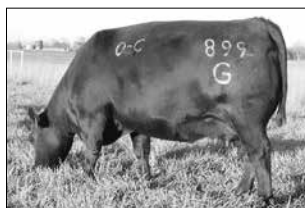


Pathfinder Sire

Sire: OCC Backstop 888B • Dam: Blackbird of RR 1204
MGS: PBC 707 1M F0203

Production EPDs				Maternal EPDs			
CED	BW	WW	YW	MILK	FL%	\$EN	\$EN%
+4	+1.6	+39	+59	+24	10%	+15	10%

- Combines incredible thickness, fleshing ability, great disposition with an attractive phenotype.
- His Pathfinder dam was one of our most productive foundation cows: 10 WR at 111, 10 YR at 107.
- Sires moderate-sized, low-maintenance daughters with excellent udders.



OCC Dixie Erica 899G
—sired by Eureka.

Semen: Call • Certificate: \$40



OCC Confidence 820C

Calved 05-08-15 +18994618



Sire: OCC Big Time 746Z • Dam: OCC Dixie Erica 628W
MGS: OCC Practical

Production EPDs				Maternal EPDs			
CED	BW	WW	YW	MILK	FL%	\$EN	\$EN%
+5	+1	+40	+67	+17	15%	+20	4%

- Confidence is a maternal brother to Zodiac. Out of the great 628W cow. He has a lot of length and eye appeal with good bone and performance and is passing it on to his progeny.

Semen: \$25/straw • Certificate: \$40



OCC Missing Link 830M

Calved 09-16-02 #14456399



Pathfinder Sire

Sire: OCC Headliner 661H • Dam: OCC Dixie Erica 946K
MGS: OCC Glory 950G

Production EPDs				Maternal EPDs			
CED	BW	WW	YW	MILK	FL%	\$EN	\$EN%
+8	-.2	+45	+75	+22	95%	+18	4%

- Missing Link was our pick of his calf crop and he is not letting us down (WN 104, YR 105, IMF 126). He is long, clean, thick, smooth and stylish. He breeds similar to Legend in consistency of muscle and style with a little more length. Sired by the great proven Argentine AI sire, OCC Headliner 661H, and out of a beautiful Glory daughter whose dam is 816B (Emblazon's full sister).
- We have many mature daughters in production and they're outstanding.
- He will see continue to heavy use both domestically and abroad.
- His sons are topping sales across the country.

Semen: \$20/straw • Certificate: \$40

Keeping things in balance — moderation, consistency, predictability and uniformity.



OCC Blueprint 632B

Calved 03-10-14 18396008



Sire: OCC Homer 650H • Dam: OCC Dixie Erica 603N
MGS: OCC Joker 620J

Production EPDs				Maternal EPDs			
CED	BW	WW	YW	MILK	FL%	\$EN	\$EN%
+13	-1.9	+30	+54	+22	1%	+22	3%

- A Moderator son that does a great job on heifers. He is thick, smooth, attractive, small headed, good footed and out of an incredible cow. A maternal brother to Zodiac. He sires his phenotype in every calf. His daughters are exceptional cows

Semen: Call
Certificates: \$40



OCC Dixie Erica 628W
— Dam of Blueprint and Zodiac.



OCC Picture Perfect 738P

Calved 03-17-04 +14940739



Sire: OCC Legend 616L • Dam: OCC Dixie Erica 816B
MGS: DHD Traveler 6807

Production EPDs				Maternal EPDs			
CED	BW	WW	YW	MILK	FL%	\$EN	\$EN%
+16	-1.5	+25	+48	+17	25%	+26	1%

- Picture Perfect (pictured at 10 years of age) is our choice for the replacement of his sire OCC Legend who is now deceased. His dam is the "Birthmark" cow 816B and she is also the dam of Homer. This bull will give the phenotype, muscle and fleshing ability of Legend with an even lower birth weight and excellent maternal value in his daughters. If you want Picture Perfect cows take a look at this bull. Calving Ease ranks in top 2% CED and 10% BW.

Semen: \$20/straw • Certificate: \$35



OCC Dakota 687D

Calved 03-22-16 19067883

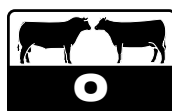


Sire: OCC Zodiac 655Z • Dam: OCC Dixie Erica 839A
MGS: OCC Umax 820U

Production EPDs				Maternal EPDs			
CED	BW	WW	YW	MILK	FL%	\$EN	\$EN%
+9	+1.4	+38	+59	+6	60%	+30	1%

- Dakota is a bull who continues to leave his mark in the industry with his daughters in production. His sire is the illustrious OCC Zodiac. Dakota was our pick of his early sons. His dam has tremendous volume and fleshing ability. He has great length of body and excellent muscle with an appealing phenotype and structural soundness.

Semen: \$25/straw • Certificate: \$40



OCC Epitome 630E

Calved 03-11-17 19391475



Sire: OCC Paxton 730P • Dam: OCC Dixie Erica 730W
MGS: OCC Focus 813F

Production EPDs				Maternal EPDs			
CED	BW	WW	YW	MILK	FL%	\$EN	\$EN%
+13	-1.2	+55	+90	+21	15%	+17	5%

- Epitome was a sale topping bull that we have used on purebreds and crossbred. He sires great length, heavy muscle and extra dimension. His daughters have fabulous udder and teat structure. His sons have excellent growth and scrotal along with exceptional phenotype. His dam is a fabulous Rear End donor. A bull we will continue to use a lot in the future. Excellent follow up to Paxton.

Semen: \$35/straw • Certificate: \$40

TO ORDER SEMEN,
 Trudy: 785-630-0522 • Tim: 785-630-0523

**FREE Shipping and
 FREE OCC Cap!**

on orders of 100 straws or more.

We ship by UPS right to your door!
 Volume discounts available on some bulls.

Check out website for older sires.
**Call if interested in Fleck X, Angus II
 or Heat Tolerant semen.**



OCC Accolade 825A

Calved 03-21-13 +18078529



Sire: OCC Paxton 730P • Dam: OCC Dixie Erica 771R
 MGS: OCC Missing Link 830M

Production EPDs				Maternal EPDs			
CED	BW	WW	YW	MILK	FL%	\$EN	\$EN%
+1	+2.9	+56	+98	+22	2%	-5	25%

• An incredibly powerful Paxton son with as much dimension as you will find in a bull. He will certainly help to fill Paxton's shoes. He is a maternal brother to OCC Big Time. He is seeing extensive service in our herd.

Semen: \$20/straw • Certificate: \$40



OCC Night Watch 902N

Calved 09-28-03 14940663

Sire: OCC Linebred 661L • Dam: OCC Primrose 931L
 MGS: OCC Just Right 619J

Production EPDs				Maternal EPDs			
CED	BW	WW	YW	MILK	FL%	\$EN	\$EN%
+10	-2.6	+38	+67	+23	45%	+21	3%

• A calving ease bull with tremendous muscle. Night Watch has good calving ease with excellent muscle, length, growth and an attractive phenotype. Daughters look excellent with great femininity and extension in the neck. His progeny are coming to the top in several herds.

Semen: \$20/straw • Certificate: \$35



OCC Heifer Bull 632H

Calved 03-14-20 20313543



Sire: OCC Homer 650H • Dam: OCC Pollyanna 807F
 MGS: OCC Zodiac 655Z

Production EPDs				Maternal EPDs			
CED	BW	WW	YW	MILK	FL%	\$EN	\$EN%
+15	-1.7	+32	+62	+18	15%	+22	3%

- OCC Heifer Bull has an impeccable pedigree stacking some of the most notable sires in the breed - OCC Homer, OCC Zodiac and OCC Paxton as the Sire and Grand Sires
- Pictured in his working clothes he is a moderate thick made bull that passes that on to his progeny
- He is calving ease with a similar calf vigor to Homer, his sire.
- The daughter will make exceptional replacements with him falling in the top 15% in Function Longivity (FL) & 3% in \$EN.

Semen: \$25/straw • Certificate: \$40



OCC Big Time 746Z

Calved 04-06-12 17696450



Sire: OCC Rear End 751R • Dam: OCC Dixie Erica 771R
 MGS: OCC Missing Link 830M

Production EPDs				Maternal EPDs			
CED	BW	WW	YW	MILK	FL%	\$EN	\$EN%
-5	+4.6	+69	+116	+13	40%	-13	40%

• Big Time is a Rear End son that should replace his sire. His overall thickness, mass, performance and eye appeal is impressive. Rear End semen is in short supply, so this son is an exciting alternative. His dam and granddam have been exceptional producing cows. His calves are proving exceptional in thickness and growth. No. 1 OCC growth sire. Big Time females are very good with excellent udders, easy fleshing and excellent fertility.

Semen: \$20/straw • Certificate: \$35



OCC Thumper 819T

Calved 09-01-07 16293203

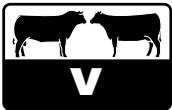


Sire: OCC Eureka 865E • Dam: OCC Dixie Erica 954K
MGS: OCC Anchor 771A

Production EPDs				Maternal EPDs			
CED	BW	WW	YW	MILK	FL%	\$EN	\$EN%
-6	+4.5	+48	+83	+16	70%	+7	15%

- A very heavy muscled bull with extreme fleshing ability.
- His Anchor-sired dam is a donor cow with excellent feet and udder that produced through 15 years old.
- He is a changer bull like Anchor. His calves are deep and stout out of any type of cow. His daughters are easy fleshing with excellent udders.
- A possible alternative to Eureka.

Semen: \$20
Certificate: \$30



OCC Unmistakable 946U

Calved 03-03-08 16294218



Sire: OCC Paxton 730P • Dam: FCC Revolution Rose 2476
MGS: OCC Emblazon 854E

Production EPDs				Maternal EPDs			
CED	BW	WW	YW	MILK	FL%	\$EN	\$EN%
+5	+2.0	+66	+113	+19	55%	-9	35%

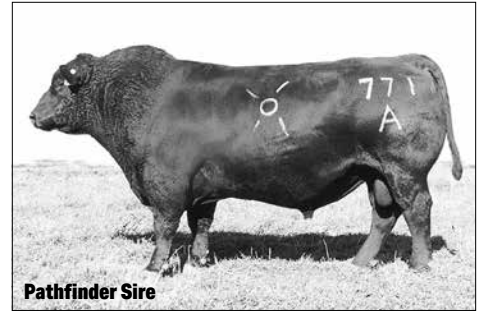
- Unmistakable is a very popular bull that had been heavily used in North and South America.
- He combines the legendary Paxton X Emblazon lineage with a 113 YW EPD.

Semen: \$30/straw • Certificate: \$40



OCC Anchor 771A

Calved 03-10-91 #11684971



#1 high accuracy bull in the breed for \$EN value. (+29)

Pathfinder Sire

Sire: DHD Traveler 6807 • Dam: OCC Juanada 709V
MGS: Cole Creek Oscar 92R

Production EPDs				Maternal EPDs			
CED	BW	WW	YW	MILK	FL%	\$EN	\$EN%
+4	+2.1	+26	+42	+12	80%	+30	1%

- After 33 years of use, Anchor is still the go-to-bull to sire offspring with unparalleled muscle, volume and fleshing.
- A real changer bull for the big, hard-working cows.
- His daughters are industry standard in power and fleshing ability.



Maternal sister, OCC Juanada 775C, and the grandam of Kiddo 832K.

Semen: Call — Limited Supply
Anchor clone: \$25
Certificate: \$40



OCC Great Plains 943G

Calved 09-07-97 #+13092912



Pathfinder Sire

Sire: N Bar Emulation EXT • Dam: Dixie Erica of CH 1019
MGS: PBC 707 1M F0203

Production EPDs				Maternal EPDs			
CED	BW	WW	YW	MILK	FL%	\$EN	\$EN%
+8	+2	+38	+71	+24	15%	+15	10%

- Great Plains is an excellent "EXT" son out of the Dixie Erica 1019.
- Proven calving ease with milk and muscle.
- He excels his sire EXT in every EPD.
- His daughters are extremely fertile with great longevity. His full sister lived to 18 years of age.
- A bull that many breeders are coming back to recently.

Semen: \$20/straw • Certificate: \$35

OCC Basic Blacks Bull Sale

3rd Monday in April Annually • 1 p.m. • At the ranch near Palmer, Kansas

America's #1 proven source for powerful, easy fleshing, beautifully uddered, maternally efficient Angus.

"Saving America's Cow Herds"

Selling 125+ Angus, Angus II & FleckAngus Bulls

2-year-old Forage Fed, Real World Bulls

Plus 70+ Registered & Commercial Females

Also selling Private Treaty: 18-month-old Fall Bulls



OCC Zodiac 655Z

A female producing bull in the Top 1% \$EN.



OCC Paxton 730P

Popular OCC sire that is leaving his mark on the industry

Offering many sons and grandsons of Johnny Jumbo, Zodiac, Paxton, Echelon, Eureka, Rear End, Homer, Zar, Epitome, Atlas, Alpha, Accolade, and Confidence.

OCC herd sires offer the best combination of \$EN, feet, udder, teat and FL values in the breed today.

- When calves are sold at weaning, the commercial operator should focus on \$EN and \$W for maximum profit.
- Basic Blacks bulls are bred to consistently sire low birth, perfect udders and maximum fleshing ability.
- Our bulls are not pushed on grain! All bulls are developed on a true forage diet.
- This guarantees soundness and added longevity enabling bulls to realistically maintain and even gain weight in the breeding pasture!
- OCC-bred females have proven to be the easiest fleshing cattle on grass alone, of any pedigrees in the Angus breed today. This guarantees less feed supplementation and decreases cow cost.

OCC Basic Blacks — Power of Predictability

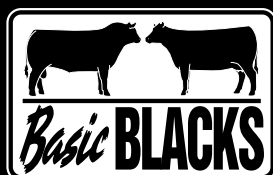
Linebred for Maternal Efficiency, Longevity,
Performance and Predictable Uniformity.

SEMEN ORDERS

Trudy: 785-630-0522

Tim: 785-630-0523

Semen available on
several new young bulls!



© Basic Blacks is a registered
trademark of Ohlde Cattle Co.

Ohlde Cattle Co.

Tim, Trudy, Jake & Jordon Ohlde
1362 2nd Road • Palmer, KS 66962

785-630-0523 Tim cell

785-630-0523 Trudy cell

tim-trudy@ohldecattle.com

SALE BOOK REQUESTS

Trudy: 785-630-0522

Tim: 785-630-0523

Bid online at LiveAuctions.tv or
superiorlivestock.com!

For more information, visit www.OhldeCattle.com

Cattle Need to Thrive on Grass Not Just Survive

The maternally efficient cow that thrives-on-grass-alone has always been the key to ranch profitability.

At Ohlde Cattle Co. we embraced this basic principle as part of our breeding program more than 40 years ago and never looked back. Our vision of this cow resulted in cattle that have a moderate mature size (1,100-1,400 lbs.), loads of volume and capacity (guts) and the ability to flesh easily on grass along with exceptional calving ease, udder quality, longevity and overall attractive phenotype. Ohlde Cattle Co has long recognized that cow efficiency and ranch profitability depends heavily on input costs. OCC Cattle have the ability to make very good use of grass and forage without the need for expensive supplements.

What's the biggest expense affecting profitability in cow-calf operations?

It's feed costs, final answer. Feed costs have the largest impact on profitability among cost factors in cow-calf operations, accounting for more than 50 percent of the variation in herd-to-herd profits. After feed cost, the next largest cost factor was depreciation. Operating costs ranked third and calf weight fourth as profit indicators. (University of Illinois IRM)

Managing feed costs has to be a priority for the commercial cow-calf operator.

Feed costs are hard to manage if the cow herd can't adapt and maintain reasonable production levels in a grass environment without expensive supplementation. The cow herd's ability to function on grass with minimal supplementation is limited by their genetic capacity to do so. That's where the Cow Energy Value (\$EN) can help. The Cow Energy Value is a way to compare sires for their ability to reduce cow energy requirements (expressed in dollar savings per cow per year) in future daughters. A larger value is more favorable as it translates into more dollars saved on feed expenses. When it comes to maximizing ranch profit, developing an energy efficient cow herd is not enough however. Focusing solely on \$EN Value improves cow efficiency but could reduce calf weaning weights over time.

Payday for most cow-calf operators comes when the calves are sold at weaning.

With current calf prices and economic instability, it is understandable why many ranchers are not motivated to retain ownership past weaning. In this scenario, the producer has a second powerful tool: Weaned Calf Value (\$W). As presented in the AAA sire summary, the \$W value "makes it possible to compare sires for the expected dollar-per-head difference in future progeny pre-weaning performance in a multi-trait fashion within a typical U.S. beef cow herd." It quantifies four primary economic impact areas: birth weight, weaning weight, maternal milk and mature cow size. Selecting sires with the highest \$W value that also offer sufficiently positive \$EN values (+10 to +30 or higher – you be the judge based on environment and goals) will enhance profitability at weaning the most.

Ohlde Cattle Co. herd sires offer the best combination of low birth weight, \$EN, feet, udder, teat and FL values in the breed today.

Nineteen of the top 30 bulls of the breed with less than +1 BW EPD and more than +53 YW and +19 \$EN, +30 \$W and positive ribeye are predominately OCC breeding. Semen is available on 10 of these bulls through OCC. The commercial cow-calf operator can acknowledge that the feedlot and carcass traits are important to the industry but these traits should not be the only focus of sire selection or ranch profitability will suffer. Carcass and feedlot traits are more terminal oriented and leave less maternally desirable females. The bottom line is that selecting bulls for replacement females with high \$EN, maternal traits and FL values can get most of the other areas of beef production right without trying too hard. Maternally efficient cattle are also typically competitive in the feedlot and on the rail. Perhaps it's time to let Ohlde Cattle Co genetics enhance your cow herd's bottom line. This guarantees Less Input and more profit.

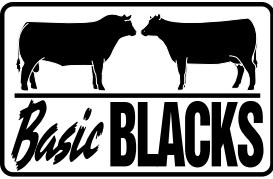


6807 Daughter — A 1991 model with \$W 28, \$EN 33 and Mature Wt. 1,205 lb.

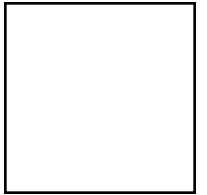


Paxton Daughter — A 2011 model with \$W 47, \$EN 33 and Mature Wt. 1,195 lb.

Focus on Females!



Ohlde Cattle Co.
1362 2nd Road • Palmer, KS 66962



Address Service Requested

DATED MATERIAL FIRST CLASS

Mail to:



OHLDE CATTLE CO.

Tim, Trudy, Jake
& Jordan Ohlde

1362 2nd Road
Palmer, KS 66962

785-630-0523 Tim
785-630-0522 Trudy

tim-trudy@ohldecattle.com
www.OhldeCattle.com

* Basic Blacks is a
registered trademark of
Ohlde Cattle Co.

**PLEASE
CALL FOR
INFORMATION
ON FLECK X,
ANGUS II &
ADDITIONAL
ANGUS BULLS.**

* = Calving Ease Bull

Sire	Registration #	Straw	Cert
OCC Emblazon 845E	#12514348	Call	\$50
OCC Paxton 730P	#14940735	Call	\$40
OCC X-tra Easy 708X *	#17190960	\$20	\$35
OCC Linebred 661L *	#14051770	\$50	\$40
OCC Best Yet 766B	#18413646	\$20	\$40
OCC Zar 869Z *	#17995884	\$25	\$35
OCC Alpha 700A *	#18041805	\$25	N/A
OCC Hunter 928H	#13354639	\$20	\$35
OCC Confidence 820C	#15289755	\$25	\$40
OCC Eureka 865E	#12514352	Call	\$40
OCC Missing Link 830M	#14456399	\$20	\$40
OCC X-cel 652X	#16877211	\$20	\$35
OCC Blueprint 632B *	#18396008	Call	\$40
OCC Picture Perfect 738P *	#14940739	\$20	\$35
OCC Dakota 687D	#19067883	\$25	\$40
OCC Epitome 630E	#19391475	\$35	\$40
OCC Accolade 825A	#18078529	\$20	\$40
OCC Night Watch 902N *	#14940663	\$20	\$35
OCC Heifer Bull 632H *	#20313543	\$25	\$40
OCC Rear End 751R	#15649977	Call	\$40
OCC Big Time 746Z	#17696450	\$20	\$35
OCC Thumper 819T	#16293203	\$20	\$30
OCC Anchor 771A	#11684971	Call	\$40
OCC Unmistakable 946U	#16294218	\$30	\$40
OCC Great Plains 943G	#13092912	\$20	\$35
OCC Echelon 857E *	#12514349	Call	\$40
OCC Realist 641R *	#15289740	\$20	\$30
OCC No Problems 52N *	#15659166	\$100	\$35
OCC Homer 650H *	#13235197	Call	\$35
OCC Y-Not 388Y *	#17695293	\$20	\$35
OCC Equal 865E	#19391497	\$20	\$35
OCC Unbelievable 851U	#16293987	\$25	\$35

2026 Sire Directory

OCC Basic Blacks Bull Sale

3rd Monday in April Annually
1 p.m. • Palmer, KS

OCC Basic Blacks Bull Sale

3rd Monday in April Annually • 1 p.m. • At the ranch near Palmer, Kansas