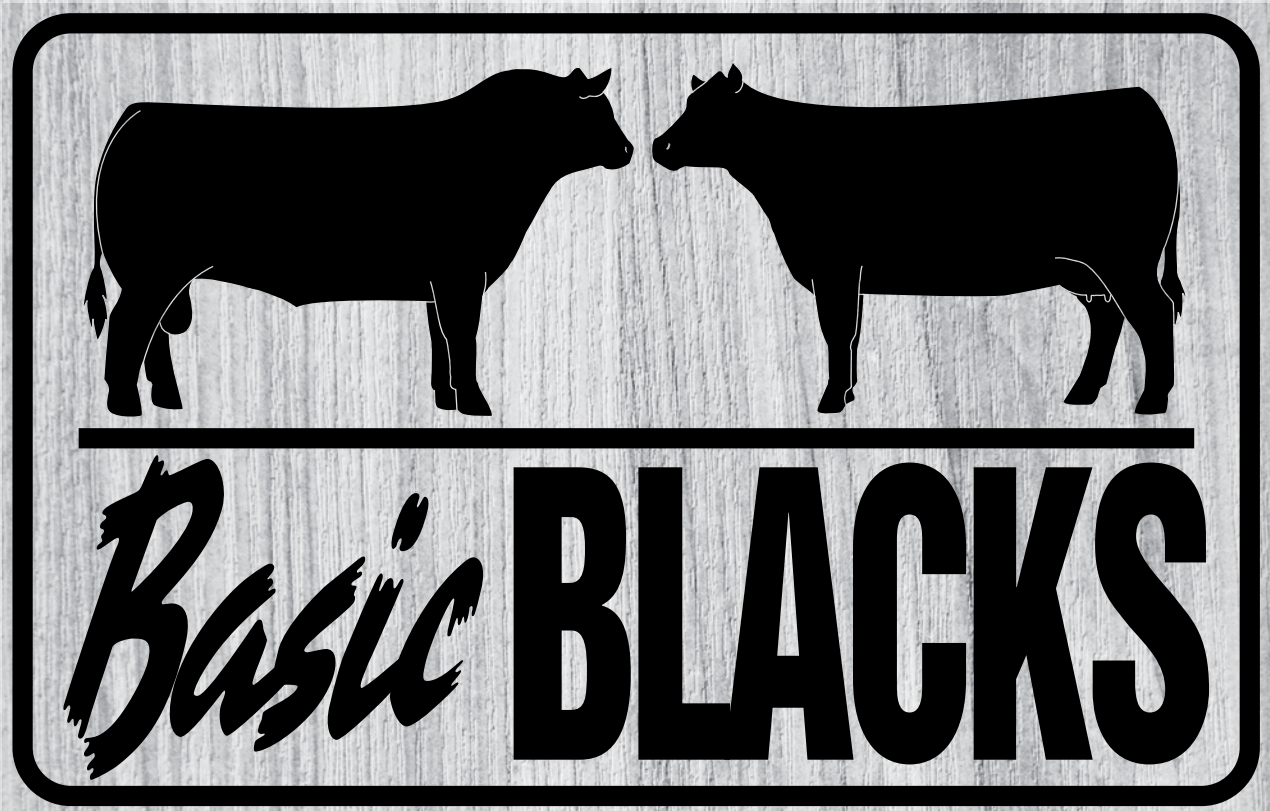


OHLDE CATTLE CO.



**BULL &
FEMALE
SALE**

APRIL 20, 2026

PALMER, KS

The No. 1 Source for Easy Fleshing, Maternally Efficient Angus Cattle

Welcome to Ohlde Cattle Company's 36th Annual Basic Blacks Bull and Female Sale. The sale will be at the ranch near Palmer, Kansas for those planning to attend in person. There is also the option of online bidding through Superior Productions and Liveauctions.tv. Phone bidding is also available through Superior. Registering to bid well in advance of the sale is very helpful to prepare for a Monday auction. Profitability for the commercial cow-calf producer has been the focus of the OCC program for over 40 years. We think it's essential to keep the focus on net profit. It's not only important to consider profit per cow but also profit per acre and that's where we think OCC cattle offer many advantages.

We are convinced that a cow herd adapted to the forage on the ranch (with minimal or zero supplementation) is the foundation of net profitability. The mother cows have to be able to thrive and not just survive on grass. Maternal lines of cattle that have the innate ability to flesh easily on grass usually have a certain "look" – a lot of body capacity ("guts" if you will) to consume forage in volume and they don't have to be big in stature to do it. There are opportunities to run more cows on the ranch when mature cow size is reduced or at least kept in balance.

Cow longevity is also a big factor in the profitability and sustainability of a herd. Cows that remain in the herd and produce a calf year after year are key to a ranch's long-term success.

A frequent dilemma for ranchers wanting to build that profitable and sustainable cow herd is having meaningful EPDs that can be used in direct selection. The EPD tools that readily translate to maternal cow efficiency and longevity have been sorely lacking in our estimation. Tools such as \$EN, DMI, and BW have been useful indicators in the past and our cattle excel in these areas. However, they have fallen short in providing a full picture.

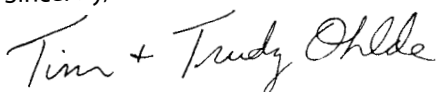
We are excited that the American Angus Association has developed the new Functional Longevity (FL) EPD that provides another selection tool to aid in profitability. It has been gratifying that OCC cattle rate highly in this area as it provides evidence that our selection process for cow efficiency and longevity over the years has proven meaningful. Functional Longevity is now factored into AAA's \$Maternal (\$M) EPD as well and we believe that adds significance to this EPD for ranchers focused on low-input systems.

So, where does that leave us when it comes to selection for cow efficiency? There are now more tools to work with and that is always positive. With selection tools like Functional Longevity, \$EN, and possibly \$M, it's now increasingly possible to identify bulls that will sire those efficient, long-lived cows. AAA EPDs for maternal weight (MW), maternal height (MH), teat size, udder suspension, hoof angle, and claw set are also available to fine tune the selection process for longevity and efficiency.

The OCC Angus II and Fleck-Angus programs provide an opportunity to benefit from heterosis without compromising cow herd efficiency. We have focused on the same selection process for cow efficiency when developing our Angus II and Fleck-Angus cow herds. It's entirely possible to have an efficient, low-input crossbred cow herd when the parent breeds are congruent in size and type.

If we can assist you in any way, please give us a call. Cattle are available for viewing anytime between now and sale time.

Sincerely,



Tim, Trudy, Jake and Jordon Ohlde

***"We must remember that cattle should thrive on grass
not just survive on grass."***

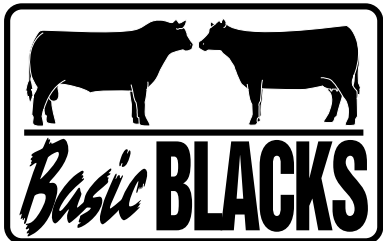
Ohlde Cattle Co. BASIC BLACKS BULL & FEMALE SALE

Monday, April 20, 2026 • 1 PM
at the Ranch • Palmer, Kansas
Trudy: 785-630-0522 • Tim: 785-630-0523

Selling 138 Bulls Angus, Angus II® and Fleck-Angus Plus 64 Registered & Commercial Females

Need not be present to win!

Registered buyers on the Internet, as well as buyers attending sale day, are eligible to win free semen!



Ohlde Cattle Co.

1362 2nd Road • Palmer, KS 66962

Tim, Trudy, Jake & Jordon Ohlde

Tim: 785-630-0523 • Trudy: 785-630-0522

1-800-New-Bull (639-2855)

ohldecatt@ohldecattle.com • OhldeCattle.com

Barney Schuh • Clyde Mattson • José Hernandez • Clint Tipton

Basic Blacks and Angus II are trademarks of Ohlde Cattle Co.

AUCTIONEER..... Brian Curless, 217-242-1665

SALE REPRESENTATIVES:

Jeff Mafi, *Angus Journal*.....816-344-4266
Stephen Russell, *KLA*785-458-2650
Chris Beutler, *Livestock Digital*402-380-8244
Justin Stout, *The Stock Exchange*913-645-5136
Guy Peverley, *The Stock Exchange*.....785-456-9911 or 785-456-4390

SALE LOCATION:

At the ranch, 1362 2nd Road • Palmer, KS 66962

TRUCKING: We are available to assist with trucking arrangements and will guarantee delivery for no more than \$300 per head on purchases totaling \$10,000 or more. Purchases totaling less than \$10,000 will be delivered at the cost of trucking. Call with questions.

HEALTH: Cattle sell with the proper health papers for interstate shipment.

TERMS: All cattle sell under the standard terms and conditions recommended by the American Angus Association. All sale bulls are guaranteed free of the AM and NH genetic defects. *OCC will retain 1/3 semen and revenue sharing interest in all registered Angus bulls unless indicated differently in the individual lots.*

INSURANCE: Livestock insurance will be available sale day.

ACCOMMODATIONS: Cedar Court Motel, 905 E Crawford St., Clay Center, 785-632-2148 — 14 miles south of the ranch. Clay Center has a paved airstrip and Manhattan (50 miles from the ranch) has a regional airport with commercial flights.

VIEWING THE AUCTION: The auction will be broadcast online at Bid.SuperiorLivestock.com and the pre-recorded videos will also be hosted there. You do not need an account just to watch the auction or view videos of the sale offering.

ONLINE BIDDING: Go to Bid.SuperiorLivestock.com for Superior's new online bidding platform.

TURN IN BIDS OVER THE PHONE: This is Superior's traditional method of buying cattle and is the suggested process for anybody who does not have consistent, high-speed internet.

FOR HELP WITH REGISTRATION OR ANY PART OF THE BIDDING PROCESS PLEASE CALL SUPERIOR AT 1-800-422-2117.

\$50 off per animal purchased if hauled away sale day or day after.



HOW TO PARTICIPATE ON THE PHONE OR ONLINE

VIEWING THE AUCTION: The auction will be broadcast online at Bid.SuperiorLivestock.com and the pre-recorded videos will also be hosted there. You do not need an account just to watch the auction or view videos of the sale offering.

ONLINE BIDDING: Go to Bid.SuperiorLivestock.com for Superior's new online bidding platform. If you have not registered there before you will need to create an account. The first time you register an account you will receive a confirmation e-mail that you must click on. Once you have completed this, select the auction you would like to bid on and click the "Request a Buyer Number" button. The first time you request a buyer number you will be sent a confirmation code via text. Enter that code in the login portal and you will receive a buyer number. This 2-step verification process will only have to be done once and in the future you will be able to simply login and request a buyer number and receive it instantly for any auction. Once you have successfully registered and received

a buyer number it will show your name and buyer number on both the video preview page and the online bidding page when you are logged in. If you have an account at LiveAuctions.tv you may skip the registration process and use those login credentials to request a buyer number as LiveAuctions is a division of Superior Livestock. For more details on registering an account and also how to bid, you may watch a tutorial at Bid.SuperiorLivestock.com/how-it-works.

TURN IN BIDS OVER THE PHONE: This is Superior's traditional method of buying cattle and is the suggested process for anybody who does not have consistent, high-speed internet. You still must register an account at Bid.SuperiorLivestock.com and request a buyer number. Once you receive a buyer number you will see the bid line phone number. Just watch the auction online and call in at least 2 lots ahead of the lot you are looking to bid on. A Superior Livestock representative will be with you on the phone and will assist you in placing bids.

FOR HELP WITH REGISTRATION OR ANY PART OF THE BIDDING PROCESS PLEASE CALL SUPERIOR AT 1-800-422-2117.

**OCC REAR END 751R**

Calved 9/1/05

15649977

OCC Focus 813F
OCC Homer 650H
 OCC Dixie Erica 816B

Basin Rainmaker 654X
 Dixie Erica of CH 1019
 DHD Traveler 6807
 Dixie Erica of CH 1019
 OCC Emblazon 854E
 OCC Juanada 709V
 Rito 9Q4 of 1H1 Sasquatch
 OCC Revolution Rose 919E

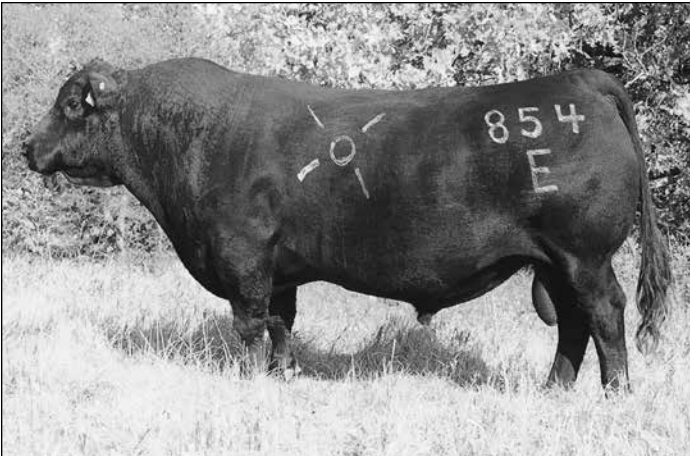
OCC Joker 620J

FCC Revolution Rose 995N

OCC Revolution Rose 887H

CED	BW	WW	YW	DMI	MILK	MW	MH	FL	\$EN
2	2.4	49	77	.51	16	-34	-1.0	1.13	26

OCC Rear End is a very deep, heavy muscled bull with unbelievable style, balance, and excellent feet and legs. His sire has done it all when it comes to calving ease and maternal quality with longevity. His grand sire, OCC Joker, sires moderate-sized females with excellent fleshing ability and great udder quality. Rear End has had great acceptance in Argentina with more than 1,000 progeny.

**OCC EMBLAZON 854E**

Calved 3/19/95

#+12514348

QAS Traveler 23-4
DHD Traveler 6807
 Bemindful Maid DHD 0807

Band 234 of Ideal 3163
 QAS Blackbird Eve 601 1
 PBC 707 1M F0203
 Bemindful Maid of R R 1079
 R R Rito 707
 Evocate Princess T
 Schearbrook Emulous 11N7
 R R Dixie Erica of C H 447

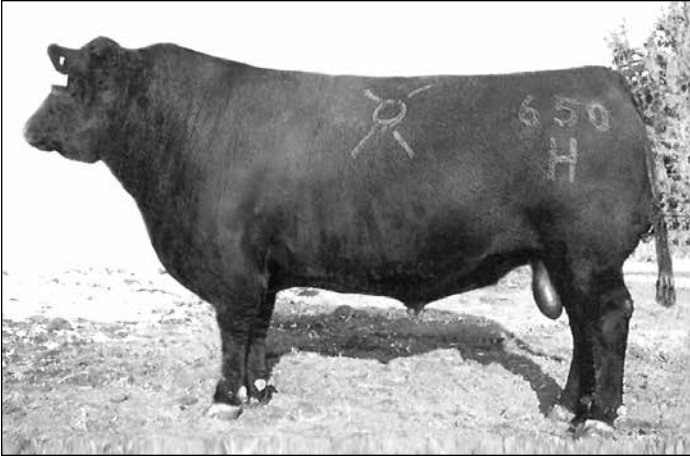
PBC 707 1M F0203

Dixie Erica of C H 1019

Dixie Erica of C H 615

CED	BW	WW	YW	DMI	MILK	MW	MH	FL	\$EN
12	.4	45	71	.40	16	6	-.6	1.11	19

His progeny have demonstrated to us that Emblazon is a worthy replacement for 6807 in our program. Emblazon has established an impressive set of low birth, superior growth EPDs, similar to those of his sire. Emblazon daughters are proving to be sound, easy fleshing females with beautiful udders.

**OCC HOMER 650H**

Calved 2/16/98

#*13235197

Basin Rainmaker 654X
OCC Focus 813F
 Dixie Erica of C H 1019

Basin Rainmaker D S 380U
 Basin Bardolene 423U
 PBC 707 1M F0203
 Dixie Erica of C H 615
 QAS Traveler 23-4
 Bemindful Maid DHD 0807
 PBC 707 1M F0203
 Dixie Erica of C H 615

DHD Traveler 6807

OCC Dixie Erica 816B

Dixie Erica of C H 1019

CED	BW	WW	YW	DMI	MILK	MW	MH	FL	\$EN
19	-3.8	24	45	-.16	18	-43	-1.3	1.11	26

A son of OCC Focus 813F, Homer is double bred to the Dixie Erica of C H 1019 cow that has produced so many herd sires for us. Homer's dam, OCC Dixie Erica 816B, is a beautiful 6807 daughter that we consider to be an ideal Angus cow. Well known for his calving ease and calf vigor for many years

**OCC EUREKA 865E**

Calved 3/22/95

#+*12514352

DHD Traveler 6807
OCC Backstop 888B
 Revolution Rose of R R 9239

QAS Traveler 23-4
 Bemindful Maid DHD 0807
 PBC 707 1M F0203
 Revolution Rose of R R 4064
 R R Rito 707
 Evocate Princess T
 Emulation N Bar 4073
 Blackbird of R R 5093

PBC 707 1M F0203

Blackbird of R R 1204

Blackbird of R R 7023

CED	BW	WW	YW	DMI	MILK	MW	MH	FL	\$EN
4	1.6	39	59	-.05	24	4	-.5	1.17	15

Eureka combines incredible thickness and fleshing ability with an attractive phenotype. His daughters are moderate sized, low maintenance females with excellent udder quality. His dam was one of our most productive foundation cows.



OCC EPITOME 630E

Calved 3/11/17

*19391475

OCC Focus 813F
OCC Paxton 730P
OCC Blackbird 736K

Basin Rainmaker 654X
Dixie Erica of CH 1019
OCC Great Plains 943G
OCC Blackbird 824G
OCC Homer 650H
FCC Revolution Rose 995N
OCC Eureka 865E
OCC Dixie Erica 606G

OCC Rear End 751R

OCC Dixie Erica 730W
OCC Dixie Erica 776M

CED	BW	WW	YW	DMI	MILK	MW	MH	FL	\$EN
13	-1.3	55	90	1.21	21	0	-1.0	1.14	19

A sale topping bull that we have used on purebred and crossbred cows. He sires great length and heavy muscle. His daughters are among our best young cows with fabulous udders. His sons have excellent growth and scrotal development with an exceptional phenotype. His dam is a fabulous Rear End daughter. An excellent follow up to Paxton.



OCC ZODIAC 655Z

Calved 9/16/02

*17715632

OCC Paxton 730P
OCC Umax 820U
OCC Dixie Erica 801M

OCC Focus 813F
OCC Blackbird 736K
OCC Joker 620J
OCC Dixie Erica 907C
OCC Focus 813F
OCC Juanada 968G
Papa Forte 1921
OCC Dixie Erica 826J

OCC Practical 841P

OCC Dixie Erica 628W
Chloe Dixie Erica 7313

CED	BW	WW	YW	DMI	MILK	MW	MH	FL	\$EN
11	-.9	35	59	-.14	10	-4	-.8	1.19	26

A sire that has caught the attention of nearly everyone that has stopped by. He has been used heavily in our program through both natural and AI service. They are very consistent in performance, muscling and fleshing ability. His dam has extreme fleshing ability and a perfect udder. Beautiful females. Top 1% \$EN



OCC PAXTON 730P

Calved 3/14/04

#*14940735

Basin Rainmaker 654X
OCC Focus 813F
Dixie Erica of CH 1019

Basin Rainmaker DS 380U
Basin Bardolene 423U
PBC 707 1M F0203
Dixie Erica of CH 615
N Bar Emulation EXT
Dixie Erica CH 1019
OCC Anchor 771A
OCC Blackbird 778A

OCC Great Plains 943G

OCC Blackbird 736K
OCC Blackbird 824G

CED	BW	WW	YW	DMI	MILK	MW	MH	FL	\$EN
13	-1.2	43	71	.62	15	-8	-1.3	1.20	23

A very long-bodied, big-scrotaled, wide-based bull that is four generations from the 6807 bloodline. Very linebred to F0203. Will make an excellent cross and complement intensely bred 6807 cattle and still be able to maintain the thickness and phenotype. BW 75 lbs. WR 106 YR 111. His Anchor granddam is also the granddam of OCC Legend 616L. Paternal brother to Homer and Hunter. His daughters are phenomenal and his genetic influence has topped many sales in the last few years!



OCC ZAR 869Z

Calved 9/13/12

*17995884

OCC Focus 813F
OCC Homer 650H
OCC Dixie Erica 816B

Basin Rainmaker 654X
Dixie Erica of CH 1019
DHD Traveler 6807
Dixie Erica of CH 1019
OCC Focus 813F
OCC Blackbird 736K
OCC Joker 620J
OCC Joker 620J5

OCC Paxton 730P

OCC Dixie Erica 642U
OCC Dixie Erica 801M

CED	BW	WW	YW	DMI	MILK	MW	MH	FL	\$EN
16	-2.4	30	55	-.04	15	-26	-1.0	1.12	26

A bull we used by natural service on heifers for many years. His daughters are proving his greatness as a female sire. His sons are growthy and powerful with good capacity and fleshing ability. He is proving to be a great replacement for Homer and Eureka.





OCC JOHNNY JUMBO 708J

Calved 3/29/21

*20347650

OCC Rear End 751R
OCC Homer 650H
FCC Revolution Rose 995N

OCC Dixie Erica 607B
OCC Paxton 730P
OCC Dixie Erica 801M

OCC Focus 813F
OCC Dixie Erica 816B
OCC Joker 620J
OCC Revolution Rose 887H
OCC Focus 813F
OCC Blackbird 736K
OCC Joker 620J
OCC Dixie Erica 907C

CED	BW	WW	YW	DMI	MILK	MW	MH	FL	\$EN
4	2.2	59	95	.72	19	9	-.8	1.19	15

Johnny Jumbo was the high selling bull in our 2023 auction. His exceptional style, balance, volume, and impeccable ancestry of maternal excellence generated great excitement then and interest has only grown since his first calves were born in 2024. We are using Johnny Jumbo heavily in our herd and several sons and daughters are featured in this year's sale offering.



OCC HERE FOR GOOD 924H

Calved 10/9/20

+*20839341

OCC Zodiac 655Z
OCC Umax 820U
OCC Dixie Erica 628W

OCC Dixie Erica 827A
OCC Paxton 730P
OCC Dixie Erica 771R

OCC Paxton 730P
OCC Dixie Erica 801M
OCC Practical 841P
Chloe Dixie Erica 7313
OCC Focus 813F
OCC Blackbird 736K
OCC Missing Link 830M
OCC Dixie Erica 776M

CED	BW	WW	YW	DMI	MILK	MW	MH	FL	\$EN
14	-2.7	40	69	.13	19	-2	-1.0	1.21	20

Here For Good 924H is a full brother to Do It All 656D, the high selling bull in our 2018 auction. Mating Zodiac 655X to Dixie Erica 827A has also produced other full brothers that serve as herd sires. 924H has sired an excellent set of calves for the last three years. He's in the top 2% of the breed for BW and FL and the top 4% for \$EN!



OCC HAS IT ALL 925H

Calved 10/9/20

+*20795649

OCC Zodiac 655Z
OCC Umax 820U
OCC Dixie Erica 628W

OCC Dixie Erica 827A
OCC Paxton 730P
OCC Dixie Erica 771R

OCC Paxton 730P
OCC Dixie Erica 801M
OCC Practical 841P
Chloe Dixie Erica 7313
OCC Focus 813F
OCC Blackbird 736K
OCC Missing Link 830M
OCC Dixie Erica 776M

CED	BW	WW	YW	DMI	MILK	MW	MH	FL	\$EN
11	-.8	42	76	.18	18	14	-.9	1.19	13

Has It All 925H is a full brother to Here For Good 924H and Do It All 656D, again demonstrating the success of the Zodiac x 827A mating. He has a powerful phenotype and his calves express excellent weaning performance. He's been used as a pasture sire in our herd for the last 3 years. Top 3% of the breed for FL and top 10% for \$EN.



OCC KILO 866K

Calved 9/3/22

*21222558

OCC Homer 650H
OCC Focus 813F
OCC Dixie Erica 816B

OCC Dixie Erica 926H
OCC Zodiac 655Z
OCC Dixie Erica 827A

Basin Rainmaker 654X
Dixie Erica of CH 1019
DHD Traveler 6807
Dixie Erica of CH 1019
OCC Umax 820U
OCC Dixie Erica 628W
OCC Paxton 730P
OCC Dixie Erica 771R

CED	BW	WW	YW	DMI	MILK	MW	MH	FL	\$EN
13	-.4	49	82	.35	11	23	-.9	1.15	13

Kilo is an exciting young herd sire that we believe has a tremendous future in our program. A son of the time-honored calving ease sire Homer 650H, his dam is Dixie Erica 926H, the only full sister to herd sires 656D, 924H, and 925H. We've used Kilo as a pasture service sire on heifers the last two years and many of the fall bred heifers in the 2026 auction carry his service. Top 10% of the breed for CED, FL, and \$EN.

**OCC ALPHA 700A**

Calved 3/25/13

*18041805

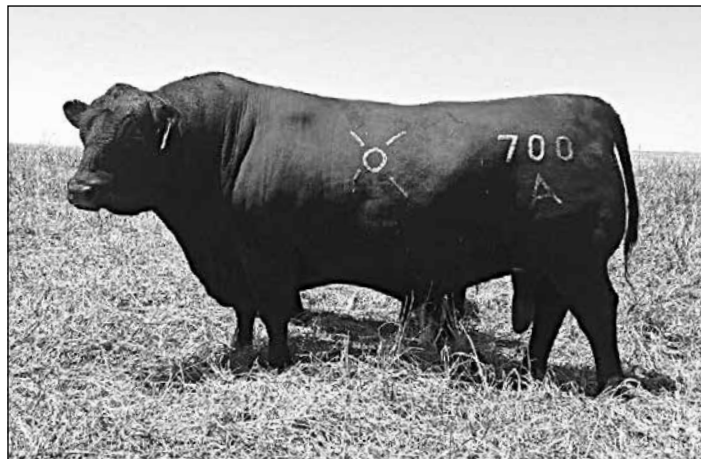
OCC NO Problems 52N
OCC X-tra Easy 708X
 OCC Dixie Erica 678T

OCC Focus 813F
 OCC Dixie Erica 816B
 OCC Traveler 723Z
 OCC Dixie Erica 613L
 OCC Emblazon 854E
 OCC Juanada 968G
 OCC Headliner 661H
 OCC Dixie Erica 816B

OCC Jet Stream 825J
OCC Dixie Erica 806Y
 OCC Dixie Erica 607P

CED	BW	WW	YW	DMI	MILK	MW	MH	FL	\$EN
14	-1.8	34	63	-.04	23	-11	-.8	1.06	19

A son of X-tra Easy, Alpha 700A is a consistent low-birth sire. He is a bull that will change fleshing ability, depth, and muscle with an attractive phenotype. Excellent uddered cattle throughout his pedigree.

**OCC DO IT ALL 656D**

Calved 3/15/16

*19067876

OCC Umax 820U
OCC Zodiac 655Z
 OCC Dixie Erica 628W

OCC Paxton 730P
 OCC Dixie Erica 801M
 OCC Practical 841P
 Chloe Dixie Erica 7313
 OCC Focus 813F
 OCC Blackbird 736K
 OCC Missing Link 830M
 OCC Dixie Erica 776M

OCC Paxton 730P
OCC Dixie Erica 827A
 OCC Dixie Erica 771R

CED	BW	WW	YW	DMI	MILK	MW	MH	FL	\$EN
9	-.9	37	67	-.01	19	2	-1.4	1.22	19

Do It All 656D was the high selling bull at \$110,000 in our 2018 auction. The excitement over his remarkable volume and attractive phenotype was justified as evidenced by his progeny. We continue to use Do It All extensively through our AI and ET programs.

**OCC EQUAL 685E**

Calved 3/29/17

*19391497

OCC Headliner 661H
OCC Moderator 825M
 OCC Dixie Erica 845K

OCC Emblazon 854E
 OCC Juanada 858F
 OCC Emblazon 854E
 OCC Dixie Erica 960H
 N Bar Emulation EXT
 Dixie Erica of CH 1019
 OCC Anchor 771A
 OCC Pollyanna 979F

OCC Great Plains 943G
OCC Pollyanna 638U
 OCC Pollyanna 944H

CED	BW	WW	YW	DMI	MILK	MW	MH	FL	\$EN
13	-2.2	24	40	-.04	22	-53	-1.1	1.22	25

Equal is a low-birth sire that's in the top 10% of the breed for CED and top 3% for BW. Sired by Moderator, his dam is the extraordinary Pollyanna 638U cow that produced until she was 16 years of age. Equal's daughters make very efficient cows. Note that he's in the top 2% of the breed for both FL and \$EN, useful selection tools for cow herd profitability.

**OCC EXCEPTIONAL BLAZE 149E**

Calved 4/14/17

3547570

Simmental

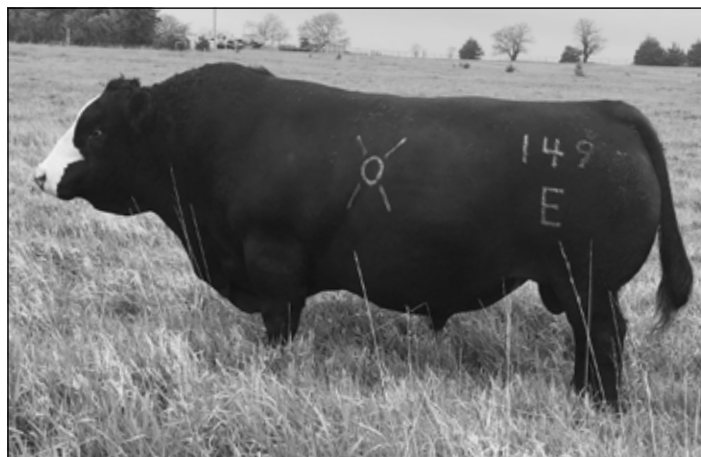
OCC Missing Link 830M
OCC Anvil 809A
 FCC Blackcap Lady 3810

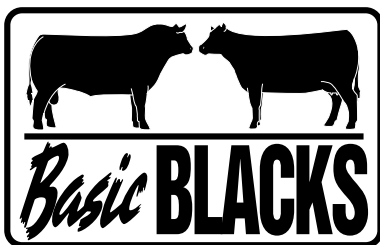
OCC Headliner 661H
 OCC Dixie Erica 946K
 OCC Anchor 771A
 H A Blackcap Lady 0464
 OCC Emblazon 854E
 OCC Juanada 968G
 Sir Arnold J5606
 Miss Arnold E5562

OCC Jet Stream 825J
OCC Scarlett 111S
 OCC Miss Arnold 134M

CED	BW	WW	YW	CEM	MILK	MWW	STAY	DOC
14	-.1	40	49	4	24	44	18	9.7

Exceptional Blaze 149E is a 1/4 Fleckvieh, 3/4 Angus bull that we continue to use heavily. Sired by Anvil 809A, his paternal granddam was a moderate and powerful Anchor daughter. 149E's dam, OCC Scarlett 111S, was a highly productive cow that remained in the herd until 17 years of age and produced 16 natural calves in her lifetime. 149E is homozygous polled and carries the red gene.





BULL & FEMALE SALE

Monday, April 20, 2026 • 1 PM
at the Ranch • Palmer, Kansas

Trudy: 785-630-0522 • Tim: 785-630-0523



OCC RED GEM 171G

Calved 9/15/19 RAAA 4901856

BTF 4 3119 ET
OCC Power Baldy 063W
OCC Valarie 452L
OCC Realist 641R
OCC Yasmin 184Y
OCC Sophie 1315

NT Plato Rupert 4
NT Austina 338
OCC Joker 620J
OCC Valarie 394H
OCC Focus 813F
OCC Dixie Erica 816B
OCC Julian 709J
Miss Arnold E5547

CED	BW	WW	YW	CEM	MILK	HB	ProS
16	-.4	47	63	7	26	63	58

Red Gem 171G is a powerfully thick and stout red composite bull that is registered through the Red Angus Association. He is 25% Polled Hereford, 12.5% Fleckvieh, and 62.5% Angus II. We used 171G as a natural service sire in 2023 on Fleck-Angus and Angus II cows and many sons are featured in this sale.



OCC GO POWER 172G

Calved 9/15/19 RAAA 4893798

OCC Transformation 680T
OCC Atlas 664A
Chloe Dixie Erica 7313
OCC X-Tra Easy 708X
OCC Eden 181E
OCC Breeze 193B

OCC Focus 813F
OCC Dixie Erica 603N
Papa Forte 1921
OCC Dixie Erica 826J
OCC No Problems 52N
OCC Dixie Erica 678T
OCC Rear End 751R
OCC Xenia 143X

CED	BW	WW	YW	CEM	MILK	HB	ProS
22	-4.0	50	93	8	21	61	123

Go Power 172G is a high percentage Angus, low percentage Fleckvieh bull that is proving to be a tremendous sire of sound, functional, and efficient cattle. Sired by Atlas 664A, Go Power also is a low-birth sire with very good weaning and yearling performance. He is a red gene carrier that is registered with the Red Angus Association. We have primarily used Go Power in our Fleckvieh-Angus program.



OCC HAVE IT MADE 125H

Calved 3/25/20 9% Fleckvieh, 91% Angus

OCC Transformation 680T
OCC Atlas 664A
Chloe Dixie Erica 7313
OCC Gulf Stream 183Z
OCC Miss 109F
OCC Miss 106B

OCC Focus 813F
OCC Dixie Erica 603N
Papa Forte 1921
OCC Dixie Erica 826J
OCC Jet Stream 939W
OCC Toni 134T
OCC Paxton 300X
OCC Miss Miss Paxton 104W

Have It Made 125H is a powerful low-percentage Fleckvieh-Angus bull that we have used as a pasture service sire for the last 3 years. Sired by Atlas 664A, his dam is an attractive and productive Gulf Stream daughter.



OCC ATLAS 664A

Calved 3/16/13 18078526

OCC Focus 813F
OCC Transformation 680T
OCC Dixie Erica 603N
Papa Forte 1921
Chloe Dixie Erica 7313
OCC Dixie Erica 826J

Basin Rainmaker 654X
Dixie Erica of C H 1019
OCC Joker 620J
OCC Dixie Erica 816B
Papa Optima 9818
Papa Envio's Blackbird 8832
OCC Emblazon 854E
OCC Dixie Erica 921E

CED	BW	WW	YW	DMI	MILK	MW	MH	FL	\$EN
16	-2.3	40	74	.72	18	-19	-1.0	1.25	23

Atlas has one of the most impressive herd sire EPD spreads, from low birth to yearling weight, in the OCC program. Atlas was the high selling bull in our 2015 sale. He consistently sires productive daughters with a beautiful phenotype and excellent udder quality. Atlas is in the top 2% of the breed for CED, top 3% for BW, top 1% for FL, top 2% for \$EN and top 15% for \$M!



OCC MAINSTAY 601M

Calved 1/14/24 21540463

OCC Echelon 857E
OCC He's So Right 920H
OCC Dixie Erica 803X

OCC Confidence 820C
OCC Juanada 950J
OCC Juanada 816F

DHD Traveler 6807
Dixie Erica of CH 1019
OCC Eureka 865E
OCC Dixie Erica 612H
OCC Big Time 746Z
OCC Dixie Erica 628W
OCC Wholesome 667W
OCC Juanada 754A

Production EPDs			
CED	BW	WW	YW
13	-2.2	29	51

Maternal EPDs			\$Values	
CEM	Milk	FL	SEN	
3	20	N/A	22	

Individual Birth Wt. Ratios, Fleshing Score			
BW	Weaning	Yearling	Fleshing
68	98	100	8.5

A very low-birth bull that is very sound with good length of body. Top 10% of the breed for CED and top 3% for birth weight EPD. **HEIFER BULL**



OCC MODERATE 602M

Calved 1/26/24 21539882

OCC Focus 813F
OCC Future 635F
OCC Pollyanna 683X

OCC Alpha 700A
OCC Dixie Erica 828H
OCC Dixie Erica 915C

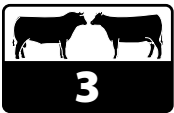
Basin Rainmaker 654X
Dixie Erica of CH 1019
OCC Remarkabull 937R
OCC Pollyanna 944H
OCC X-tra Easy 708X
OCC Dixie Erica 806Y
OCC Big Time 746Z
Limestone Dixie Erica Y675

Production EPDs			
CED	BW	WW	YW
5	1.6	44	77

Maternal EPDs			\$Values	
CEM	Milk	FL	SEN	
4	18	1.10	18	

Individual Birth Wt. Ratios, Fleshing Score			
BW	Weaning	Yearling	Fleshing
72	106	105	8

This Future 635F son combines moderate birth with excellent growth. He has a weaning ratio of 106, yearling ratio of 105, and a YW EPD of +77.



OCC MAGNATE 615M

Calved 3/14/24 21539875

OCC X-tra Easy 708X
OCC Alpha 700A
OCC Dixie Erica 806Y

FEATURED LOT

OCC Accolade 825A
OCC Dixie Erica 702K
OCC Dixie Erica 645F

OCC NO Problems 52N
OCC Dixie Erica 678T
OCC Jet Stream 825J
OCC Dixie Erica 607P
OCC Paxton 730P
OCC Dixie Erica 771R
OCC Echelon 857E
OCC Dixie Erica 600D

Production EPDs			
CED	BW	WW	YW
10	0.1	42	77

Maternal EPDs			\$Values	
CEM	Milk	FL	SEN	
5	23	1.11	14	

Individual Birth Wt. Ratios, Fleshing Score			
BW	Weaning	Yearling	Fleshing
66	114	113	8

An Alpha 700A son with moderate birth and terrific performance numbers. He recorded a WR of 114 and a YR of 115. The Alpha and Accolade daughters are outstanding and both sires are prominent in this bull's pedigree.



OCC MAGIC MAN 617M

Calved 3/14/24 21539876

OCC Moderator 825M
OCC Blueprint 632B
OCC Dixie Erica 628W

OCC Dakota 687D
OCC Dixie Erica 719K
OCC Dixie Erica 669G

OCC Headliner 661H
OCC Dixie Erica 845K
OCC Practical 841P
Chloe Dixie Erica 7313
OCC Zodiac 655Z
OCC Dixie Erica 839A
OCC Focus 813F
OCC Dixie Erica 806Y

Production EPDs			
CED	BW	WW	YW
11	-0.7	40	70

Maternal EPDs			\$Values	
CEM	Milk	FL	SEN	
5	18	1.19	22	

Individual Birth Wt. Ratios, Fleshing Score			
BW	Weaning	Yearling	Fleshing
62	109	111	8.5

Blueprint sons are rare and this low-birth son has a lot to offer. He's in the top 15% of the breed for both CED and BW EPDs and also posted a WR of 109 and a YR of 111. Blueprint 632B is one of the top 10 sires in the Angus breed for Functional Longevity. **HEIFER BULL**



OCC MAGNETIC 643M

Calved 3/26/24 21539878

OCC Rear End 751R
OCC Johnny Jumbo 708J
OCC Dixie Erica 607B

FEATURED LOT

OCC Focus 813F
OCC Dixie Erica 690D
OCC Dixie Erica 609B

OCC Homer 650H
FCC Revolution Rose 995N
OCC Paxton 730P
OCC Dixie Erica 801M
Basin Rainmaker 654X
Dixie Erica of CH 1019
OCC Rancher 680R
OCC Dixie Erica 803F

Production EPDs			
CED	BW	WW	YW
8	-0.5	42	73

Maternal EPDs			\$Values	
CEM	Milk	FL	SEN	
2	20	1.18	21	

Individual Birth Wt. Ratios, Fleshing Score			
BW	Weaning	Yearling	Fleshing
72	96	95	8.5

This outstanding Johnny Jumbo son is stout and attractive. His dam is a slick-haired Focus 813F daughter that always brings in a top calf. Note his very moderate BW EPD of -.5 combined with a YW EPD of +73.



OCC MAN OF STEEL 651M

Calved 3/28/24 21539879

OCC Rear End 751R
OCC Johnny Jumbo 708J
OCC Dixie Erica 607B

FEATURED LOT

OCC Alpha 700A
OCC Dixie Erica 717F
OCC Dixie Erica 745A

OCC Homer 650H
FCC Revolution Rose 995N
OCC Paxton 730P
OCC Dixie Erica 801M
OCC X-tra Easy 708X
OCC Dixie Erica 806Y
OCC Wholesome 667W
OCC Dixie Erica 714X

Production EPDs			
CED	BW	WW	YW
5	1.6	50	84

Maternal EPDs			\$Values	
CEM	Milk	FL	SEN	
2	22	1.15	15	

Individual Birth Wt. Ratios, Fleshing Score			
BW	Weaning	Yearling	Fleshing
84	112	110	9

A very good Johnny Jumbo son with moderate birth and high growth numbers (YW EPD +84). Top individual weaning and yearling performance.



OCC MERCED 654M

Calved 3/28/24 21539880

OCC Awakening 893A

OCC-ALC Style with Ease

ALC Juanada 501

OCC Zodiac 655Z

OCC Pollyanna 678J

OCC Pollyanna 638A

OCC NO Problems 52N

OCC Dixie Erica 617P

OCC X-cite 825X

ALC Dixie Erica 218

OCC Umax 820U

OCC Dixie Erica 628W

OCC Rear End 751R

OCC Pollyanna 638U

Production EPDs			
CED	BW	WW	YW
6	1.6	49	79

Maternal EPDs			\$Values	
CEM	Milk	FL	\$EN	
-1	19	1.20	16	

Individual Birth Wt. Ratios, Fleshing Score			
BW	Weaning	Yearling	Fleshing
82	113	109	9

An attractive Style with Ease son out of the Pollyanna cow family noted for great longevity. Top individual performance – WR of 113 and YR of 109. Top 3% of the breed for both FL and \$EN, good indicators of cow longevity and efficiency.



OCC MORE 658M

Calved 3/29/24 21539883

OCC Zodiac 655Z

OCC Has It All 925H

OCC Dixie Erica 827A

OCC Moderator 825M

OCC Dixie Erica 611F

OCC Dixie Erica 774D

OCC Umax 820U

OCC Dixie Erica 628W

OCC Paxton 730P

OCC Dixie Erica 771R

OCC Headliner 661H

OCC Dixie Erica 845K

OCC Focus 813F

OCC Dixie Erica 637S

Production EPDs			
CED	BW	WW	YW
13	-1.6	37	69

Maternal EPDs			\$Values	
CEM	Milk	FL	\$EN	
6	17	1.15	21	

Individual Birth Wt. Ratios, Fleshing Score			
BW	Weaning	Yearling	Fleshing
70	102	108	8

With a CED of +13 and a BW EPD of -1.6, this 925H son could be used on heifers. Very good weaning and yearling performance. Top 15% of the breed for FL and top 2% for \$EN.
HEIFER BULL



OCC MADDUX 661M

Calved 3/30/24 21540465

OCC Homer 650H

OCC Rear End 751R

FCC Revolution Rose 995N

OCC Wholesome 667W

OCC Dixie Erica 649G

OCC Dixie Erica 694C

OCC Focus 813F

OCC Dixie Erica 816B

OCC Joker 620J

OCC Revolution Rose 887H

OCC Practical 841P

OCC Juanada 664R

OCC Paxton 730P

OCC Dixie Erica 803X

Production EPDs			
CED	BW	WW	YW
3	2.5	51	85

Maternal EPDs			\$Values	
CEM	Milk	FL	\$EN	
-1	19	1.15	20	

Individual Birth Wt. Ratios, Fleshing Score			
BW	Weaning	Yearling	Fleshing
88	105	112	8.5

A powerful Rear End son out of a beautiful Wholesome daughter that goes back to the exceptional 694C and 803X cows. Excellent weaning and yearling performance.



OCC MAXIMUS 657M

Calved 3/28/24 21539881

OCC Rear End 751R

OCC Johnny Jumbo 708J

OCC Dixie Erica 607B

FEATURED LOT

OCC Eureka 865E

OCC Dixie Erica 665Z

OCC Dixie Erica 773U

OCC Homer 650H

FCC Revolution Rose 995N

OCC Paxton 730P

OCC Dixie Erica 801M

OCC Backstop 888B

Blackbird of RR 1204

OCC Prestige 672P

OCC Dixie Erica 778J

Production EPDs			
CED	BW	WW	YW
5	1.5	51	86

Maternal EPDs			\$Values	
CEM	Milk	FL	\$EN	
0	22	1.15	7	

Individual Birth Wt. Ratios, Fleshing Score			
BW	Weaning	Yearling	Fleshing
80	110	113	8

This Johnny Jumbo son has excellent growth and moderate birth. Top individual performance – WR of 110 and YR of 113. Top 15% of the breed for FL and top 10% for \$EN.



OCC MANLY 660M

Calved 3/29/24 21539885

OCC Headliner 661H

OCC Moderator 825M

OCC Dixie Erica 845K

FEATURED LOT

OCC Wholesome 667W

OCC Dixie Erica 656H

OCC Dixie Erica 601D

OCC Emblazon 854E

OCC Juanada 858F

OCC Emblazon 854E

OCC Dixie Erica 960H

OCC Practical 841P

OCC Juanada 664R

OCC Work of Art 766W

OCC Dixie Erica 605K

Production EPDs			
CED	BW	WW	YW
11	-0.3	33	55

Maternal EPDs			\$Values	
CEM	Milk	FL	\$EN	
6	22	1.14	20	

Individual Birth Wt. Ratios, Fleshing Score			
BW	Weaning	Yearling	Fleshing
78	99	97	8

This bull has a terrific maternal pedigree that includes the sires Moderator 825M, Wholesome 667W, and Work of Art 766W. There are only consistently great cows with perfect udders in his ancestry. Excellent EPDs for FL and \$EN.



OCC MIDWAY 667M

Calved 3/30/24 21539886

OCC Dakota 687D

OCC Judgement 630J

OCC Dixie Erica 803X

OCC Zodiac 655Z

OCC Juanada 839F

OCC Juanada 980C

OCC Zodiac 655Z

OCC Dixie Erica 839A

OCC Eureka 865E

OCC Dixie Erica 612H

OCC Umax 820U

OCC Dixie Erica 628W

OCC X-factor 677X

OCC Juanada 827X

Production EPDs			
CED	BW	WW	YW
13	-1.2	39	61

Maternal EPDs			\$Values	
CEM	Milk	FL	\$EN	
4	16	1.12	23	

Individual Birth Wt. Ratios, Fleshing Score			
BW	Weaning	Yearling	Fleshing
67	105	107	8.5

A very low-birth weight bull with top weaning and yearling performance. Top 10% of the breed for CED and BW EPDs.



OCC MARLIN 670M

Calved 3/31/24 21539887

OCC Fortress 744F
OCC Just Now 788J
OCC Juanada 808C
OCC Dakota 687D
OCC Evonne 713G
OCC Evonne 632C

OCC Alpha 700A
OCC Dixie Erica 752A
OCC Work of Art 766W
OCC Juanada 641Z
OCC Zodiac 655Z
OCC Dixie Erica 839A
OCC NO Problems 52N
OCC Evonne 806A

Production EPDs			
CED	BW	WW	YW
7	1.3	46	84

Maternal EPDs			\$Values
CEM	Milk	FL	\$EN
1	19	N/A	14

Individual Birth Wt. Ratios, Fleshing Score			
BW	Weaning	Yearling	Fleshing
80	101	107	8

A Just Now 788J son with a little more frame. He combines moderate birth with excellent yearling performance (YW EPD +84).



OCC MASTER 673M

Calved 4/1/24 21539888

OCC Jet Stream 825J
OCC Just The Thing 998J
OCC Pollyanna 638U

OCC Zar 869Z
OCC Juanada 698H
OCC Juanada 630F

OCC Emblazon 854E
OCC Juanada 968G
OCC Great Plains 943G
OCC Pollyanna 944H
OCC Homer 650H
OCC Dixie Erica 642U
OCC X-tra Easy 708X
OCC Juanada 865C

Production EPDs			
CED	BW	WW	YW
11	-0.6	39	66

Maternal EPDs			\$Values
CEM	Milk	FL	\$EN
7	23	1.19	19

Individual Birth Wt. Ratios, Fleshing Score			
BW	Weaning	Yearling	Fleshing
70	105	102	8

A low-birth weight EPD bull that is very long bodied with great muscle and eye appeal. Breed leading EPDs for FL and \$EN.



OCC METRO 674M

Calved 3/30/24 21539889

OCC Focus 813F
OCC Future 635F
OCC Pollyanna 683X
OCC Equal 685E
OCC Dixie Erica 711H
OCC Dixie Erica 693F

Basin Rainmaker 654X
Dixie Erica of C H 1019
OCC Remarkabull 937R
OCC Pollyanna 944H
OCC Moderator 825M
OCC Pollyanna 638U
OCC Blueprint 632B
OCC Dixie Erica 727D

Production EPDs			
CED	BW	WW	YW
13	-2.3	38	58

Maternal EPDs			\$Values
CEM	Milk	FL	\$EN
8	20	1.16	23

Individual Birth Wt. Ratios, Fleshing Score			
BW	Weaning	Yearling	Fleshing
64	113	102	8

An excellent heifer bull with a pedigree that goes back to Moderator and Blueprint. With a BW EPD of -2.3, he's in the top 3% of the breed for this trait. He's also top 10% for FL and top 1% for \$EN. **HEIFER BULL**



OCC MAGNUM 676M

Calved 4/2/24 21540466

OCC Transformation 680T
OCC Atlas 664A
FEATURED LOT Chloe Dixie Erica 7313
OCC Juanada 733D
OCC Accolade 825A
OCC Juanada 831A

OCC Focus 813F
OCC Dixie Erica 603N
Papa Forte 1921
OCC Dixie Erica 826J
OCC Paxton 730P
OCC Dixie Erica 771R
OCC Echelon 857E
OCC Juanada 826R

Production EPDs			
CED	BW	WW	YW
10	0.7	43	78

Maternal EPDs			\$Values
CEM	Milk	FL	\$EN
1	21	1.22	14

Individual Birth Wt. Ratios, Fleshing Score			
BW	Weaning	Yearling	Fleshing
82	112	111	9

One of the top bulls in the sale! He's simply "extra good" with terrific balance and eye appeal. All the dams in his pedigree for 4 generations are donor quality cows. Top 2% of the breed for FL and top 4% for \$EN.



OCC MAXWELL 679M

Calved 4/2/24 21539890

OCC Paxton 730P
OCC Epitome 630E
OCC Dixie Erica 730W
OCC You're Exact 763Y
OCC Dixie Erica 699E
OCC Dixie Erica 609B

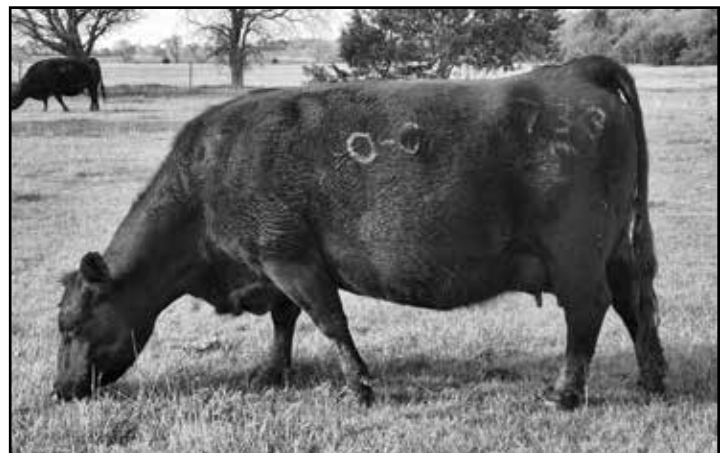
OCC Focus 813F
OCC Blackbird 736K
OCC Rear End 751R
OCC Dixie Erica 776M
OCC Paxton 730P
OCC Pollyanna 944H
OCC Rancher 680R
OCC Dixie Erica 803F

Production EPDs			
CED	BW	WW	YW
13	-1.4	45	74

Maternal EPDs			\$Values
CEM	Milk	FL	\$EN
2	22	1.13	19

Individual Birth Wt. Ratios, Fleshing Score			
BW	Weaning	Yearling	Fleshing
72	109	107	8.5

A very stout low-birth bull that should work well on heifers. Top 10% of the breed for CED and BW EPDs. Also has top weaning and yearling performance. **HEIFER BULL**



OCC Juanada 733D - Dam of Lot 16 and maternal grand-dam of Lot 21.



OCC MANNY 682M

Calved 4/3/24 21539894

OCC Echelon 857E
OCC He's So Right 920H
 OCC Dixie Erica 803X

CM Columbo 7118C
ALC-OCC Burgess 9604
 OCC Burgess 489C

DHD Traveler 6807
 Dixie Erica of CH 1019
 OCC Eureka 865E
 OCC Dixie Erica 612H

OCC Homer 650H
 RTR Primrose 27R2
 OCC Xerus 748X
 OCC Burgess 7157A

Production EPDs			
CED	BW	WW	YW
14	-1.5	19	35

Maternal EPDs			\$Values	
CEM	Milk	FL	FL	\$EN
7	18	N/A		25

Individual Birth Wt. Ratios, Fleshing Score			
BW	Weaning	Yearling	Fleshing
70	85	88	8

A low-birth bull that should work well on heifers. He's in the top 4% of the breed for CED (+14) and top 10% for BW EPD (-1.5). **HEIFER BULL**



OCC MORE JOHNNY 689M

Calved 4/5/24 21539893

OCC Rear End 751R
OCC Johnny Jumbo 708J
 OCC Dixie Erica 607B

FEATURED LOT
 OCC NO Problems 52N
OCC Dixie Erica 601B
 Chloe Dixie Erica 7313

OCC Homer 650H
 FCC Revolution Rose 995N
 OCC Paxton 730P
 OCC Dixie Erica 801M

OCC Focus 813F
 OCC Dixie Erica 816B
 Papa Forte 1921
 OCC Dixie Erica 826J

Production EPDs			
CED	BW	WW	YW
9	0.9	41	74

Maternal EPDs			\$Values	
CEM	Milk	FL	FL	\$EN
5	18	1.15		25

Individual Birth Wt. Ratios, Fleshing Score			
BW	Weaning	Yearling	Fleshing
80	94	101	8.5

Another good Johnny Jumbo son that's in the top 15% of the breed for FL and top 1% for \$EN. His dam is a daughter of the great 7313 cow that's also the dam of OCC Atlas 664A.



OCC MAINTAIN 685M

Calved 4/4/24 21539892

OCC Dakota 687D
OCC Judgement 630J
 OCC Dixie Erica 803X

FEATURED LOT
 OCC Paxton 730P
OCC Juanada 797E
 OCC Juanada 877Z

OCC Zodiac 655Z
 OCC Dixie Erica 839A
 OCC Eureka 865E
 OCC Dixie Erica 612H

OCC Focus 813F
 OCC Blackbird 736K
 OCC Jet Stream 825J
 OCC Juanada 826R

Production EPDs			
CED	BW	WW	YW
11	-0.1	41	63

Maternal EPDs			\$Values	
CEM	Milk	FL	FL	\$EN
0	17	1.11		23

Individual Birth Wt. Ratios, Fleshing Score			
BW	Weaning	Yearling	Fleshing
80	113	111	8.5

A very good Judgement 630J son with excellent weaning and yearling performance. His dam is a very moderate, smooth-made Paxton daughter with perfect udder quality.



OCC MESA 693M

Calved 4/6/24 21540476

OCC Big Time 746Z
OCC Confidence 820C
 OCC Dixie Erica 628W

OCC Homer 650H
OCC Juanada 622F
 OCC Juanada 733D

OCC Rear End 751R
 OCC Dixie Erica 771R
 OCC Practical 841P
 Chloe Dixie Erica 7313

OCC Focus 813F
 OCC Dixie Erica 816B
 OCC Accolade 825A
 OCC Juanada 831A

Production EPDs			
CED	BW	WW	YW
8	-0.1	30	55

Maternal EPDs			\$Values	
CEM	Milk	FL	FL	\$EN
2	17	1.15		23

Individual Birth Wt. Ratios, Fleshing Score			
BW	Weaning	Yearling	Fleshing
80	95	93	8

A lower birth EPD bull that could be used on heifers. His maternal grandsire is Homer 650H. Breed leading EPDs for both FL and \$EN.



OCC MILESTONE 699M

Calved 4/7/24 21539896

OCC Zodiac 655Z
OCC Here For Good 924H
 OCC Dixie Erica 827A

OCC Zar 869Z
OCC Pollyanna 708G
 OCC Pollyanna 611B

OCC Umax 820U
 OCC Dixie Erica 628W
 OCC Paxton 730P
 OCC Dixie Erica 771R

OCC Homer 650H
 OCC Dixie Erica 642U
 OCC Rear End 751R
 OCC Pollyanna 944H

Production EPDs			
CED	BW	WW	YW
13	-2.1	35	55

Maternal EPDs			\$Values	
CEM	Milk	FL	FL	\$EN
6	17	1.18		24

Individual Birth Wt. Ratios, Fleshing Score			
BW	Weaning	Yearling	Fleshing
70	97	92	8.5

A very good 924H son that should work well on heifers. He posts a CED of +13 (top 10%) and BW EPD of -2.1 (top 4%). His dam is a nice Zar 869Z daughter from the Pollyanna family.

HEIFER BULL

A New Maternal EPD FL = Functional Longevity

Cow longevity is a big factor in the profitability and sustainability of a herd. Cows that remain in the herd and produce a calf year after year are key to a ranch's long-term success.

"The Functional Longevity (FL) EPD predicts the number of calves a sire's daughter is expected to produce by 6 years of age compared to other sires in the population.

The unit of the trait is the number of calves produced by 6 years of age, with a higher EPD meaning that on average sires' daughters are predicted to produce more calves by 6 years of age, compared to a low EPD."
 (American Angus Association 2026)

The number of calves is expressed as a decimal, which might seem a bit confusing. It's best to focus on differences among sires. In other words, the higher the EPD the better.

Functional Longevity EPDs above 1.10 are considered to be very good. Please note that almost all of the OCC sale bulls have FL EPDs in the range of 1.10 to 1.20, which puts them in the top percentiles of the breed for this trait.

To emphasize further, two OCC herd sires are among the top 10 sires in the entire Angus breed for FL. OCC Blueprint 632B has a FL EPD of +1.28 and OCC Atlas 664A comes in at +1.26. That puts them in the top 1% of the breed for this EPD.



OCC MONTEREY 707M

Calved 4/7/24 21539897

OCC Moderator 825M
OCC Equal 685E
 OCC Pollyanna 638U
 CM Chisholm 7107C
OCC-ALC Juanada 8252
 ALC Dixie Erica 330

OCC Headliner 661H
 OCC Dixie Erica 845K
 OCC Great Plains 943G
 OCC Pollyanna 944H
 OCC Echelon 857E
 CM Blackbird 374A
 OCC Echelon 857E
 ALC Juanada 632

Production EPDs			
CED	BW	WW	YW
13	-2.0	35	53

Maternal EPDs			\$Values
CEM	Milk	FL	\$EN
9	17	1.20	27

Individual Birth Wt. Ratios, Flething Score			
BW	Weaning	Yearling	Flething
64	104	96	8

This Equal son is a low-birth weight bull that should work well on heifers. He's in the top 10% of the breed for CED (+13) and top 4% for BW EPD (-2.0). He also in the top 3% for FL and top 1% for \$EN! **HEIFER BULL**



OCC MAINLAND 710M

Calved 4/9/24 21539899

OCC Homer 650H
OCC Rear End 751R
FEATURED LOT
 FCC Revolution Rose 995N
 OCC Focus 813F
OCC Pollyanna 643E
 OCC Pollyanna 744Y

OCC Focus 813F
 OCC Dixie Erica 816B
 OCC Joker 620J
 OCC Revolution Rose 887H
 Basin Rainmaker 654X
 Dixie Erica of C H 1019
 OCC Paxton 730P
 OCC Pollyanna 944H

Production EPDs			
CED	BW	WW	YW
-1	3.6	46	81

Maternal EPDs			\$Values
CEM	Milk	FL	\$EN
0	16	1.17	23

Individual Birth Wt. Ratios, Flething Score			
BW	Weaning	Yearling	Flething
90	102	106	8

A big growth Rear End son out of an outstanding dam. Every cow in his pedigree is a great one. His maternal granddam, 744Y, produced a calf every year until the age of 14.



OCC MAKERS MARK 719M

Calved 4/10/24 21539901

OCC Awakening 893A
OCC-ALC Style with Ease
 ALC Juanada 501
 OCC Zodiac 655Z
OCC Dixie Erica 751J
 OCC Dixie Erica 681A

OCC NO Problems 52N
 OCC Dixie Erica 617P
 OCC X-cite 825X
 ALC Dixie Erica 218
 OCC Umax 820U
 OCC Dixie Erica 628W
 OCC Transformation 680T
 Chloe Dixie Erica 7313

Production EPDs			
CED	BW	WW	YW
16	-2.9	26	45

Maternal EPDs			\$Values
CEM	Milk	FL	\$EN
5	17	1.19	25

Individual Birth Wt. Ratios, Flething Score			
BW	Weaning	Yearling	Flething
60	91	91	9

A very low-birth Style with Ease son that should work well on heifers. His maternal granddam, 681A, is a very low-birth cow out of 7313, the dam of Atlas 664A. Note his CED of +16 (top 2%) and BW EPD of -2.9 (top 2%). Plus, he's in the top 4% for FL and top 1% for \$EN! **HEIFER BULL**



OCC MAKE ME PROUD 708M

Calved 4/7/24 21539898

OCC Emblazon 854E
OCC Headliner 661H
 OCC Juanada 858F
 OCC Echelon 857E
OCC Blackbird 650K
 OCC Blackbird 788H

DHD Traveler 6807
 Dixie Erica of C H 1019
 Basin Rainmaker 654X
 OCC Juanada 709V
 DHD Traveler 6807
 Dixie Erica of C H 1019
 OCC Double Take 706D
 OCC Blackbird 611E

Production EPDs			
CED	BW	WW	YW
9	0.2	45	82

Maternal EPDs			\$Values
CEM	Milk	FL	\$EN
3	18	1.08	19

Individual Birth Wt. Ratios, Flething Score			
BW	Weaning	Yearling	Flething
67	103	114	8.5

This Headliner 661H son offers moderate birth with excellent growth. Note his WR of 103 and YR of 114.



OCC MULTIPURPOSE 714M

Calved 4/9/24 21539900

OCC Emblazon 854E
OCC Jet Stream 825J
 OCC Juanada 968G
 OCC NO Problems 52N
OCC Pollyanna 640C
 OCC Pollyanna 638A

DHD Traveler 6807
 Dixie Erica of C H 1019
 OCC Eureka 865E
 OCC Juanada 774A
 OCC Focus 813F
 OCC Dixie Erica 816B
 OCC Rear End 751R
 OCC Pollyanna 638U

Production EPDs			
CED	BW	WW	YW
9	-0.3	52	83

Maternal EPDs			\$Values
CEM	Milk	FL	\$EN
0	21	1.12	19

Individual Birth Wt. Ratios, Flething Score			
BW	Weaning	Yearling	Flething
80	121	114	8.5

A low-birth bull with exceptional individual performance (WR 121, YR 114) and growth EPDs (WW +52, YW +83). His dam is a deep-flanked, slick-haired No Problems 52N daughter with a perfect udder.



OCC Pollyanna 638A - The maternal granddam of Lots 7, 26, and 139.

Angus Bulls



OCC MAN ENOUGH 720M

Calved 4/10/24 21539902

OCC Zodiac 655Z
OCC Here For Good 924H
 OCC Dixie Erica 827A

OCC Rear End 751R
OCC Pollyanna 665F
 OCC Pollyanna 613B

OCC Umax 820U
 OCC Dixie Erica 628W
 OCC Paxton 730P
 OCC Dixie Erica 771R
 OCC Homer 650H
 FCC Revolution Rose 995N
 OCC Missing Link 830M
 OCC Pollyanna 944H

Production EPDs			
CED	BW	WW	YW
9	-0.3	50	82

Maternal EPDs			\$Values
CEM	Milk	FL	\$EN
3	19	1.15	18

Individual Birth Wt. Ratios, Fleshing Score			
BW	Weaning	Yearling	Fleshing
75	110	111	8.5

A very moderate-birth 924H son with excellent growth. Top individual performance – WR of 110, YR of 111. He has excellent WW (+50) and YW (+82) EPDs to match.



OCC MAJESTY 723M

Calved 4/8/24 21539903

OCC Homer 650H
OCC Rear End 751R
FEATURED LOT FCC Revolution Rose 995N

OCC Blueprint 632B
OCC Blackbird 793F
 OCC Blackbird 636D

OCC Focus 813F
 OCC Dixie Erica 816B
 OCC Joker 620J
 OCC Revolution Rose 887H
 OCC Moderator 825M
 OCC Dixie Erica 628W
 OCC Zodiac 655Z
 OCC Blackbird 765W

Production EPDs			
CED	BW	WW	YW
4	2.0	44	76

Maternal EPDs			\$Values
CEM	Milk	FL	\$EN
3	14	1.18	26

Individual Birth Wt. Ratios, Fleshing Score			
BW	Weaning	Yearling	Fleshing
86	98	105	8.5

A very good Rear End son with great balance and eye appeal. His dam is a fabulous Blueprint daughter with perfect udder quality. The Rear End daughters are also prized for great udders and fleshing ability. He's in the top 10% of the breed for FL, top 1% for \$EN, and top 15% for \$M.



OCC MINUTEMAN 727M

Calved 4/11/24 21539904

OCC Jet Stream 825J
OCC Just The Thing 998J
 OCC Pollyanna 638U

FEATURED LOT
 OCC Discovery 918D
OCC Pollyanna 642H
 OCC Pollyanna 636B

OCC Emblazon 854E
 OCC Juanada 968G
 OCC Great Plains 943G
 OCC Pollyanna 944H
 Rito 9FB3 of 5H11 Fullback
 Erica Lassie of R R 766B
 OCC Moderator 825M
 OCC Pollyanna 683X

Production EPDs			
CED	BW	WW	YW
11	-1.1	36	59

Maternal EPDs			\$Values
CEM	Milk	FL	\$EN
7	26	1.20	17

Individual Birth Wt. Ratios, Fleshing Score			
BW	Weaning	Yearling	Fleshing
70	111	107	8

One of the top bulls in the sale! This exceptional 998J son in uniquely linebred to the extraordinary Pollyanna 944H family. His dam is a beautiful Discovery 918D daughter out of the great 636B cow. Top 3% for both FL and \$EN.



OCC MARBLE 730M

Calved 4/12/24 21539905

OCC Homer 650H
OCC Rear End 751R
 FCC Revolution Rose 995N

OCC Wholesome 667W
OCC Dixie Erica 728G
 OCC Dixie Erica 673D

OCC Focus 813F
 OCC Dixie Erica 816B
 OCC Joker 620J
 OCC Revolution Rose 887H
 OCC Practical 841P
 OCC Juanada 664R
 OCC Zodiac 655Z
 OCC Dixie Erica 843A

Production EPDs			
CED	BW	WW	YW
5	1.6	51	81

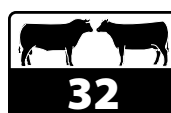
Maternal EPDs			\$Values
CEM	Milk	FL	\$EN
2	19	1.12	21

Individual Birth Wt. Ratios, Fleshing Score			
BW	Weaning	Yearling	Fleshing
82	114	111	8.5

A top performing Rear End son out of an attractive Wholesome daughter. Excellent weaning and yearling performance.



OCC Blackbird 793F - Dam of Lot 29



OCC JUST THE THING 736M

Calved 4/13/24 Angus II

OCC Jet Stream 825J
OCC Just The Thing 998J
 OCC Pollyanna 638U

OCC Zar 869Z
OCC Miss 763H
 OCC Miss 660E

OCC Emblazon 854E
 OCC Juanada 968G
 OCC Great Plains 943G
 OCC Pollyanna 944H
 OCC Homer 650H
 OCC Dixie Erica 642U
 OCC X-tra Easy 708X
 OCC Miss 702C

Production EPDs			
BW	WW	Milk	YW
-0.5	35	22	62

Individual Birth Wt. Ratios, Fleshing Score			
BW	Weaning	Yearling	Fleshing
78	98	95	8.5

This is an Angus II bull that got tagged by error with the registered bulls. A son of 998J out of a deep-bodied Zar daughter.



OCC MEMPHIS 741M

Calved 4/14/24

21540462

OCC Zodiac 655Z

OCC Here For Good 924H

OCC Dixie Erica 827A

OCC Rear End 751R

OCC Pollyanna 611B

OCC Pollyanna 944H

OCC Umax 820U

OCC Dixie Erica 628W

OCC Paxton 730P

OCC Dixie Erica 771R

OCC Homer 650H

FCC Revolution Rose 995N

OCC Anchor 771A

OCC Pollyanna 979F

Production EPDs			
CED	BW	WW	YW
7	0.7	46	75

Maternal EPDs			\$Values
CEM	Milk	FL	\$EN
3	20	1.18	18

Individual Birth Wt. Ratios, Fleshing Score

BW	Weaning	Yearling	Fleshing
80	113	109	8.5

A good 924H son with moderate birth and top weaning and yearling performance. His dam, 611B, is an older Rear End daughter out of the great Pollyanna 944H donor cow.



OCC METHODOICAL 744M

Calved 4/15/24

21539907

OCC Umax 820U

OCC Zodiac 655Z

OCC Dixie Erica 628W

OCC Definition 637D

OCC Pollyanna 769H

OCC Pollyanna 602E

OCC Paxton 730P

OCC Dixie Erica 801M

OCC Practical 841P

Chloe Dixie Erica 7313

OCC Zodiac 655Z

OCC Dixie Erica 821A

OCC Alpha 700A

OCC Pollyanna 961B

Production EPDs			
CED	BW	WW	YW
13	-1.9	29	49

Maternal EPDs			\$Values
CEM	Milk	FL	\$EN
7	14	1.19	25

Individual Birth Wt. Ratios, Fleshing Score

BW	Weaning	Yearling	Fleshing
60	90	96	8.5

A low-birth Zodiac son that could be used on both cows and heifers. He posts impressive birth and maternal EPDs – CED +13 (top 10%), BW -1.9 (top 4%), FL +1.19 (top 4%), and \$EN +25 (top 1%).



OCC MESQUITE 751M

Calved 4/15/24

21539909

OCC Zodiac 655Z

OCC Here For Good 924H

OCC Dixie Erica 827A

OCC NO Problems 52N

OCC Evonne 632C

OCC Evonne 806A

OCC Umax 820U

OCC Dixie Erica 628W

OCC Paxton 730P

OCC Dixie Erica 771R

OCC Focus 813F

OCC Dixie Erica 816B

OCC Rear End 751R

BHA Evonne 180

Production EPDs			
CED	BW	WW	YW
15	-3.1	40	67

Maternal EPDs			\$Values
CEM	Milk	FL	\$EN
6	20	1.17	21

Individual Birth Wt. Ratios, Fleshing Score

BW	Weaning	Yearling	Fleshing
65	108	102	8.5

A super low-birth heifer bull that's clean-made and slick-haired. This 924H son has a CED of +15 (top 3% of the breed) and \$EN of +21 (top 2%). **HEIFER BULL**



OCC METEOR 742M

Calved 4/14/24

21540461

OCC Emblazon 854E

OCC Jet Stream 825J

OCC Juanada 968G

OCC Legacy 839L

OCC Juanada 616G

OCC Juanada 704Y

DHD Traveler 6807

Dixie Erica of C H 1019

OCC Eureka 865E

OCC Juanada 774A

OCC Echelon 857E

OCC Dixie Erica 960E

OCC Prototype 847P

OCC Juanada 663R

Production EPDs			
CED	BW	WW	YW
8	0.2	39	64

Maternal EPDs			\$Values
CEM	Milk	FL	\$EN
1	21	1.09	20

Individual Birth Wt. Ratios, Fleshing Score

BW	Weaning	Yearling	Fleshing
72	107	102	8

An attractive Jet Stream son with very moderate birth and good weaning and yearling performance.



OCC MEAT WAGON 745M

Calved 4/15/24

21539908

OCC Mitchell 831M

OCC Remarkabull 937R

FEATURED LOT

OCC Dixie Erica 801M

OCC Dixie Erica 694C

OCC Paxton 730P

OCC Dixie Erica 803X

OCC Hunter 928H

OCC Erica Lassie 839J

OCC Joker 620J

OCC Dixie Erica 907C

OCC Focus 813F

OCC Blackbird 736K

OCC Eureka 865E

OCC Dixie Erica 612H

Production EPDs			
CED	BW	WW	YW
8	-0.2	32	55

Maternal EPDs			\$Values
CEM	Milk	FL	\$EN
3	21	1.15	21

Individual Birth Wt. Ratios, Fleshing Score

BW	Weaning	Yearling	Fleshing
80	99	98	8.5

A very moderate, attractive, thick & complete son of Remarkabull 937R. His dam, 694C, is a big-volume, slick-haired, easy fleshing Paxton daughter out of the great 803X donor cow.



OCC Dixie Erica 803X — Granddam of Lots 1, 18, 36, 56, 62, 150, 160, 164, and 175. Great granddam of Lots 11, 43, 61, 141, and 144.



OCC MOHAWK 753M

Calved 4/16/24 21539910

OCC Alpha 700A

OCC Friendly 718F

Chloe Dixie Erica 7313



OCC Zar 869Z

OCC Dixie Erica 827J

OCC Dixie Erica 827A

OCC X-tra Easy 708X

OCC Dixie Erica 806Y

Papa Forte 1921

OCC Dixie Erica 826J

OCC Homer 650H

OCC Dixie Erica 642U

OCC Paxton 730P

OCC Dixie Erica 771R

Production EPDs			
CED	BW	WW	YW
11	0.4	36	70

Maternal EPDs			\$Values	
CEM	Milk	FL	\$EN	
6	18	1.16	22	

Individual Birth Wt. Ratios, Fleshing Score			
BW	Weaning	Yearling	Fleshing
75	94	98	8

A very good, moderate-birth son of Friendly 718F. His dam is a Zar daughter out of the great 827A cow that's also the dam of Do It All 656D and his many brothers.



OCC MONROE 774M

Calved 4/20/24 21539911

OCC Alpha 700A

OCC Friendly 718F

Chloe Dixie Erica 7313

OCC Jet Stream 825J

OCC Pollyanna 685G

OCC Pollyanna 748Z

OCC X-tra Easy 708X

OCC Dixie Erica 806Y

Papa Forte 1921

OCC Dixie Erica 826J

OCC Emblazon 854E

OCC Juanada 968G

OCC Rear End 751R

OCC Pollyanna 944H

Production EPDs			
CED	BW	WW	YW
3	3.7	40	78

Maternal EPDs			\$Values	
CEM	Milk	FL	\$EN	
2	21	1.14	19	

Individual Birth Wt. Ratios, Fleshing Score			
BW	Weaning	Yearling	Fleshing
87	103	112	8

A heavier birth EPD bull with a great maternal pedigree that will work good on cows. Very good weaning and yearling performance and he's in the top 15% of the breed for FL and top 2% for \$EN.



OCC Friendly 718F - Sire of Lots 38, 40, 46, 52, 82, 85, 123, and 200.



OCC MANFRED 758M

Calved 4/17/24 21540467

OCC Fortress 744F

OCC Just Now 788J

OCC Juanada 808C

OCC Zar 869Z

OCC Dixie Erica 684G

OCC Dixie Erica 640Y

OCC Alpha 700A

OCC Dixie Erica 752A

OCC Work of Art 766W

OCC Juanada 641Z

OCC Homer 650H

OCC Dixie Erica 642U

OCC Echelon 857E

OCC Dixie Erica 687W

Production EPDs			
CED	BW	WW	YW
6	2.0	56	98

Maternal EPDs			\$Values	
CEM	Milk	FL	\$EN	
1	23	N/A	2	

Individual Birth Wt. Ratios, Fleshing Score			
BW	Weaning	Yearling	Fleshing
85	120	119	8

This Just Now 788J son offers terrific growth. He's one of the top performing bulls in the sale (WR 120, YR 119) and has excellent growth EPDs to match (WW +56, YW +98).



OCC MENDER 775M

Calved 4/20/24 21539912

OCC Zodiac 655Z

OCC Has It All 925H

OCC Dixie Erica 827A

OCC Linebred 661L

OCC Blackcap 658C

OCC Blackcap 856X

OCC Umax 820U

OCC Dixie Erica 628W

OCC Paxton 730P

OCC Dixie Erica 771R

OCC Homer 650H

OCC Dixie Erica 686J

OCC Echelon 857E

OCC Blackcap 872K

Production EPDs			
CED	BW	WW	YW
16	-2.7	31	60

Maternal EPDs			\$Values	
CEM	Milk	FL	\$EN	
7	17	1.17	23	

Individual Birth Wt. Ratios, Fleshing Score			
BW	Weaning	Yearling	Fleshing
63	90	97	8

A very low-birth 925H son that should work well on heifers. His dam is an attractive, deep-bodied Linebred 661L daughter. **HEIFER BULL**



OCC MARCELLO 785M

Calved 4/23/24 21540477

OCC Dakota 687D

OCC Judgement 630J

OCC Dixie Erica 803X

OCC Zodiac 655Z

OCC Dixie Erica 754D

OCC Dixie Erica 681A

OCC Zodiac 655Z

OCC Dixie Erica 839A

OCC Eureka 865E

OCC Dixie Erica 612H

OCC Umax 820U

OCC Dixie Erica 628W

OCC Transformation 680T

Chloe Dixie Erica 7313

Production EPDs			
CED	BW	WW	YW
14	-2.4	25	36

Maternal EPDs			\$Values	
CEM	Milk	FL	\$EN	
4	15	1.13	28	

Individual Birth Wt. Ratios, Fleshing Score			
BW	Weaning	Yearling	Fleshing
58	92	87	8.5

A very low-birth Judgement 630J son out of a cow family noted for calving ease. With a CED of +14 (top 4%) and BW EPD of -2.4 (top 3%), he should work well on heifers. **HEIFER BULL**



OCC MIGHTY MAN 786M

Calved 4/23/24 21540468

OCC Rear End 751R

OCC Johnny Jumbo 708J

OCC Dixie Erica 607B

FEATURED LOT

OCC Great Plains 943G

OCC Dixie Erica 624E

OCC Dixie Erica 694C

OCC Homer 650H

FCC Revolution Rose 995N

OCC Paxton 730P

OCC Dixie Erica 801M

N Bar Emulation EXT

Dixie Erica of CH 1019

OCC Paxton 730P

OCC Dixie Erica 803X

Production EPDs			
CED	BW	WW	YW
4	1.9	46	75

Maternal EPDs			\$Values
CEM	Milk	FL	\$EN
3	22	1.18	19

Individual Birth Wt. Ratios, Fleshing Score			
BW	Weaning	Yearling	Fleshing
84	101	95	8

A good Johnny Jumbo son out of a highly proven cow family. His dam is a Great Plains daughter out of the great 694C cow and her granddam is 803X. Top 10% of the breed for FL, top 2% for \$EN, and top 10% for \$M.



OCC MOTTO 796M

Calved 4/25/24 21540478

OCC Moderator 825M

OCC Equal 685E

OCC Pollyanna 638U

OCC Blueprint 632B

OCC Dixie Erica 713H

OCC Dixie Erica 688F

OCC Headliner 661H

OCC Dixie Erica 845K

OCC Great Plains 943G

OCC Pollyanna 944H

OCC Moderator 825M

OCC Dixie Erica 628W

OCC Anvil 809A

OCC Dixie Erica 645U

Production EPDs			
CED	BW	WW	YW
15	-3.3	28	49

Maternal EPDs			\$Values
CEM	Milk	FL	\$EN
9	20	1.21	23

Individual Birth Wt. Ratios, Fleshing Score			
BW	Weaning	Yearling	Fleshing
65	99	99	8

A very low-birth Equal son that will make a great heifer bull. With a CED of +15 (top 3%) and BW of -3.3 (top 1%), he's certainly a unique find. In addition to calving ease, he's also in the top 3% of the breed for FL and top 1% for \$EN. **HEIFER BULL**



OCC MODESTO 806M

Calved 4/23/24 21540470

OCC Fortress 744F

OCC Just Now 788J

OCC Juanada 808C

FEATURED LOT

OCC Double Impact 722D

OCC Dixie Erica 773H

OCC Dixie Erica 724E

OCC Alpha 700A

OCC Dixie Erica 752A

OCC Work of Art 766W

OCC Juanada 641Z

OCC Jet Stream 825J

OCC Dixie Erica 771R

OCC Zodiac 655Z

OCC Dixie Erica 745A

Production EPDs			
CED	BW	WW	YW
6	1.2	44	77

Maternal EPDs			\$Values
CEM	Milk	FL	\$EN
0	23	N/A	13

Individual Birth Wt. Ratios, Fleshing Score			
BW	Weaning	Yearling	Fleshing
70	97	96	8

A moderate-birth bull with good growth numbers. His dam is a deep-bodied 722D daughter with great udder quality.



OCC MIGHTY 792M

Calved 4/20/24 21539906

OCC Awakening 893A

OCC-ALC Style with Ease

ALC Juanada 501

OCC Equal 685E

OCC Dixie Erica 753J

OCC Dixie Erica 909C

OCC NO Problems 52N

OCC Dixie Erica 617P

OCC X-cite 825X

ALC Dixie Erica 218

OCC Moderator 825M

OCC Pollyanna 638U

OCC Rear End 751R

OCC Dixie Erica 630X

Production EPDs			
CED	BW	WW	YW
6	1.6	38	63

Maternal EPDs			\$Values
CEM	Milk	FL	\$EN
1	19	1.18	23

Individual Birth Wt. Ratios, Fleshing Score			
BW	Weaning	Yearling	Fleshing
86	98	94	8.5

The Style with Ease daughters make functional and efficient cows. This Style with Ease son should do the same. His dam is from the same cow family that produced the great 827A donor cow. Top 10% for FL and top 1% for \$EN.



OCC MORE BASIC 797M

Calved 4/25/24 21540469

OCC Alpha 700A

OCC Friendly 718F

Chloe Dixie Erica 7313

OCC Practical 841P

OCC Pollyanna 842Z

OCC Pollyanna 944H

OCC X-tra Easy 708X

OCC Dixie Erica 806Y

Papa Forte 1921

OCC Dixie Erica 826J

OCC Focus 813F

OCC Juanada 968G

OCC Anchor 771A

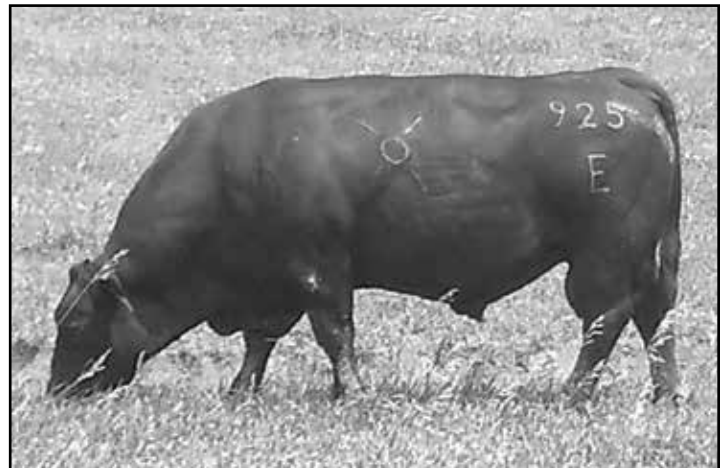
OCC Pollyanna 979F

Production EPDs			
CED	BW	WW	YW
6	2.6	31	61

Maternal EPDs			\$Values
CEM	Milk	FL	\$EN
0	16	1.12	24

Individual Birth Wt. Ratios, Fleshing Score			
BW	Weaning	Yearling	Fleshing
88	105	105	8

A Friendly 718F son with very good weaning and yearling performance. His dam, 842Z, is sired by Practical 841P and has been a donor cow in our program. Note that she's a daughter of the great Anchor sired 944H cow.



OCC-ALC Style with Ease - Sire of Lots 7, 27, 44, 167, 181, and 189.



OCC MAUI 808M

Calved 4/25/24 21540471

OCC Focus 813F

OCC Future 635F

OCC Pollyanna 683X

OCC Echelon 857E

OCC Dixie Erica 653H

OCC Dixie Erica 845E

Basin Rainmaker 654X
Dixie Erica of C H 1019
OCC Remarkabull 937R
OCC Pollyanna 944H

DHD Traveler 6807
Dixie Erica of C H 1019
OCC Blueprint 632B
OCC Dixie Erica 672C

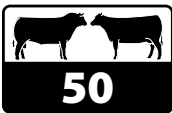
Production EPDs			
CED	BW	WW	YW
12	-1.6	34	62

Maternal EPDs			\$Values	
CEM	Milk	FL	\$EN	
6	15	1.14	24	

Individual Birth Wt. Ratios, Fleshing Score

BW	Weaning	Yearling	Fleshing
68	97	101	8

A low-birth Future 635F son that should work well on heifers. He's in the top 10% of the breed for both CED and BW EPDs.



OCC MONTEZ 820M

Calved 5/9/24 21539913

OCC Moderator 825M

OCC Equal 685E

OCC Pollyanna 638U

OCC X-cellent 857X

OCC Dixie Erica 690G

OCC Dixie Erica 601D

OCC Headliner 661H
OCC Dixie Erica 845K
OCC Great Plains 943G
OCC Pollyanna 944H

OCC Focus 813F
OCC Blackcap 872K
OCC Work of Art 766W
OCC Dixie Erica 605K

Production EPDs			
CED	BW	WW	YW
11	-0.6	29	51

Maternal EPDs			\$Values	
CEM	Milk	FL	\$EN	
8	22	1.16	22	

Individual Birth Wt. Ratios, Fleshing Score

BW	Weaning	Yearling	Fleshing
80	101	104	8

This Equal son is another low-birth bull that could be used on heifers. Top 15% of the breed for both CED and BW EPDs.



OCC Confidence 820C - Sire of Lots 21, 51, 130, and 165. Confidence is a maternal brother to Zodiac 655Z and Blueprint 632B.



OCC MAESTRO 810M

Calved 4/20/24 21540472

OCC Zodiac 655Z

OCC Here For Good 924H

OCC Dixie Erica 827A

OCC Zar 869Z

OCC Blackcap 753F

OCC Blackcap 658C

OCC Umax 820U
OCC Dixie Erica 628W
OCC Paxton 730P
OCC Dixie Erica 771R

OCC Homer 650H
OCC Dixie Erica 642U
OCC Linebred 661L
OCC Blackcap 856X

Production EPDs			
CED	BW	WW	YW
16	-2.6	34	63

Maternal EPDs			\$Values	
CEM	Milk	FL	\$EN	
8	17	1.18	23	

Individual Birth Wt. Ratios, Fleshing Score

BW	Weaning	Yearling	Fleshing
68	94	100	8.5

This low-birth 924H son should make a great heifer bull. He's in the top 2% of the breed for both CED and BW EPDs.

HEIFER BULL



OCC MODOC 822M

Calved 5/10/24 21539914

OCC Big Time 746Z

OCC Confidence 820C

OCC Dixie Erica 628W

OCC Great Plains 943G

OCC Dixie Erica 638D

OCC Dixie Erica 721Y

OCC Rear End 751R
OCC Dixie Erica 771R
OCC Practical 841P
Chloe Dixie Erica 7313

N Bar Emulation EXT
Dixie Erica of C H 1019
OCC Practical 841P
OCC Dixie Erica 808U

Production EPDs			
CED	BW	WW	YW
7	-0.1	37	61

Maternal EPDs			\$Values	
CEM	Milk	FL	\$EN	
4	19	1.17	21	

Individual Birth Wt. Ratios, Fleshing Score

BW	Weaning	Yearling	Fleshing
77	102	92	8

A moderate-birth Confidence 820C son that will sire those functional & efficient replacement females. Very good longevity in his maternal ancestry. His great granddam, 808U, produced until she was 15 years of age.



OCC MONTE 827M

Calved 5/13/24 21539915

OCC Alpha 700A

OCC Friendly 718F

Chloe Dixie Erica 7313

OCC Blueprint 632B

OCC Erica Lassie 613G

OCC Erica Lassie 761D

OCC X-tra Easy 708X
OCC Dixie Erica 806Y
Papa Forte 1921
OCC Dixie Erica 826J

OCC Moderator 825M
OCC Dixie Erica 628W
OCC Zodiac 655Z
OCC Erica Lassie 688A

Production EPDs			
CED	BW	WW	YW
11	0.5	32	57

Maternal EPDs			\$Values	
CEM	Milk	FL	\$EN	
6	17	1.21	26	

Individual Birth Wt. Ratios, Fleshing Score

BW	Weaning	Yearling	Fleshing
75	89	89	8

A 718F son that will sire excellent replacement females. Top 3% of the breed for FL and top 1% for \$EN.



OCC MERCURY 829M

Calved 5/14/24 21539916

OCC Fortress 744F
OCC Just Now 788J
OCC Juanada 808C

OCC Focus 813F
OCC Juanada 636G
OCC Juanada 831A

OCC Alpha 700A
OCC Dixie Erica 752A
OCC Work of Art 766W
OCC Juanada 641Z

Basin Rainmaker 654X
Dixie Erica of C H 1019
OCC Echelon 857E
OCC Juanada 826R

Production EPDs			
CED	BW	WW	YW
5	1.8	38	74

Maternal EPDs			\$Values
CEM	Milk	FL	\$EN
1	21	N/A	17

Individual Birth Wt. Ratios, Flething Score			
BW	Weaning	Yearling	Flething
80	95	101	8.5

This bull comes from an interesting cow family that goes back to the great Eureka daughter, 968G, that was the dam of Jet Stream.



OCC MOAB 831M

Calved 5/15/24 21540473

OCC Zodiac 655Z
OCC Here For Good 924H
OCC Dixie Erica 827A

OCC Big Time 746Z
ALC-OCC Dixie Erica 9636
ALC Dixie Erica 963

OCC Umax 820U
OCC Dixie Erica 628W
OCC Paxton 730P
OCC Dixie Erica 771R
OCC Rear End 751R
OCC Dixie Erica 771R
OCC Principal 668P
ALC Miss Eureka 633

Production EPDs			
CED	BW	WW	YW
7	0.3	44	76

Maternal EPDs			\$Values
CEM	Milk	FL	\$EN
1	22	1.23	10

Individual Birth Wt. Ratios, Flething Score			
BW	Weaning	Yearling	Flething
85	112	103	8

A long-bodied, clean-headed 924H son with excellent weaning performance. He's in the top 1% of the breed for FL and top 5% for \$EN.



OCC MENTOR 832M

Calved 5/15/24 21539917

OCC Focus 813F
OCC Future 635F
OCC Pollyanna 683X

OCC Thumper 819T
OCC Juanada 672A
OCC Juanada 715T

Basin Rainmaker 654X
Dixie Erica of C H 1019
OCC Remarkabull 937R
OCC Pollyanna 944H

OCC Eureka 865E
OCC Dixie Erica 954K
OCC Missing Link 830M
OCC Juanada 894N

Production EPDs			
CED	BW	WW	YW
3	1.3	36	65

Maternal EPDs			\$Values
CEM	Milk	FL	\$EN
0	12	1.07	24

Individual Birth Wt. Ratios, Flething Score			
BW	Weaning	Yearling	Flething
84	97	101	8

A stout Future 635F son out of a powerful dam sired by Thumper 819T.



OCC MONEY MAKER 833M

Calved 2/10/24 21539918

OCC Legacy 839L
OCC Great One 803G
OCC Dixie Erica 827A

OCC Zodiac 655Z
OCC Dixie Erica 883F
OCC Dixie Erica 803X

OCC Echelon 857E
OCC Dixie Erica 960E
OCC Paxton 730P
OCC Dixie Erica 771R

OCC Umax 820U
OCC Dixie Erica 628W
OCC Eureka 865E
OCC Dixie Erica 612H

Production EPDs			
CED	BW	WW	YW
12	-0.5	43	74

Maternal EPDs			\$Values
CEM	Milk	FL	\$EN
4	20	1.16	15

Individual Birth Wt. Ratios, Flething Score			
BW	Weaning	Yearling	Flething
76	100	100	8.5

A lower birth bull that combines two exceptional cow families in his pedigree. He's sired by Great One 803G, the powerful Legacy son out of the 827A donor cow, while his dam, 883F, is a beautiful Zodiac daughter out of the great 803X cow. Top 10% for FL and top 3% for \$EN.



OCC MOVE OVER 836M

Calved 3/1/24 21540474

OCC Legacy 839L
OCC Great One 803G
OCC Dixie Erica 827A

OCC Eureka 865E
OCC Juanada 791G
OCC Juanada 877Z

OCC Echelon 857E
OCC Dixie Erica 960E
OCC Paxton 730P
OCC Dixie Erica 771R

OCC Backstop 888B
Blackbird of RR 1204
OCC Jet Stream 825J
OCC Juanada 826R

Production EPDs			
CED	BW	WW	YW
8	0.7	42	69

Maternal EPDs			\$Values
CEM	Milk	FL	\$EN
2	23	1.16	19

Individual Birth Wt. Ratios, Flething Score			
BW	Weaning	Yearling	Flething
81	99	93	8

A thick and stout son of 803G that's out of the cow family that produced Jet Stream 825J. Top 15% of the breed for \$M.



OCC Dixie Erica 827A — The dam of herd sires Do It All 656D, Here For Good 924H, Has It All 925H, and Great One 803G.



OCC MORNING MAN 839M

Calved 5/15/24

21539919

OCC Jet Stream 825J

OCC Just The Thing 998J

OCC Pollyanna 638U

OCC Moderator 825M

OCC Juanada 619H

OCC Juanada 612F

OCC Emblazon 854E

OCC Juanada 968G

OCC Great Plains 943G

OCC Pollyanna 944H

OCC Headliner 661H

OCC Dixie Erica 845K

OCC Focus 813F

OCC Juanada 734Z

Production EPDs			
CED	BW	WW	YW
12	-1.5	33	55

Maternal EPDs			\$Values
CEM	Milk	FL	\$EN
8	22	1.22	22

Individual Birth Wt. Ratios, Fleshing Score			
BW	Weaning	Yearling	Fleshing
67	99	99	8.5

A low birth 998J son that should work well on heifers.

He's in the top 10% of the breed for CED (+12) and BW EPD (-1.5). This bull also has very interesting maternal EPDs – top 2% for FL, top 1% for \$EN, and top 10% for \$M. **HEIFER BULL**



OCC MOCHA 855M

Calved 5/31/24

21540475

OCC Zodiac 655Z

OCC Has It All 925H

OCC Dixie Erica 827A

OCC Archon 889A

OCC Dixie Erica 660F

OCC Dixie Erica 716C

OCC Umax 820U

OCC Dixie Erica 628W

OCC Paxton 730P

OCC Dixie Erica 771R

OCC Rear End 751R

OCC Blackcap 654W

OCC Linebred 661L

OCC Dixie Erica 826A

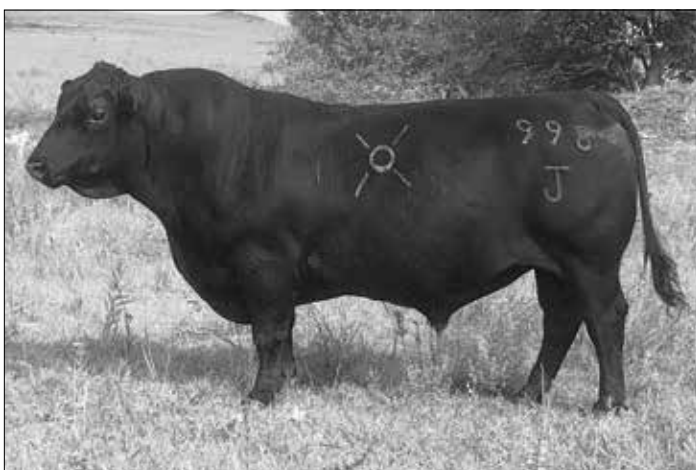
Production EPDs			
CED	BW	WW	YW
10	-0.2	44	79

Maternal EPDs			\$Values
CEM	Milk	FL	\$EN
5	15	1.17	14

Individual Birth Wt. Ratios, Fleshing Score			
BW	Weaning	Yearling	Fleshing
74	99	106	8

A very moderate birth weight bull with good

growth numbers. Note his top yearling performance and strong maternal EPDs.



OCC Just The Thing 998J — Sire of Lots 14, 30, 32, 58, 61, and 187.



OCC MOJO 843M

Calved 5/20/24

21539920

OCC Moderator 825M

OCC Equal 685E

OCC Pollyanna 638U

OCC Linebred 661L

OCC Dixie Erica 622C

OCC Dixie Erica 821A

OCC Headliner 661H

OCC Dixie Erica 845K

OCC Great Plains 943G

OCC Pollyanna 944H

OCC Homer 650H

OCC Dixie Erica 686J

OCC Rear End 751R

OCC Dixie Erica 706S

Production EPDs			
CED	BW	WW	YW
11	-0.9	36	57

Maternal EPDs			\$Values
CEM	Milk	FL	\$EN
8	22	1.17	22

Individual Birth Wt. Ratios, Fleshing Score			
BW	Weaning	Yearling	Fleshing
76	109	107	8

Another heifer bull with 3 generations of low-birth

ancestry. The legendary calving ease sire, Homer 650H, appears twice in his pedigree. He has very good maternal EPDs also.

HEIFER BULL



OCC LUCKY STAR 9113L

Calved 11/18/23

21539766

OCC Jet Stream 825J

OCC Just The Thing 998J

OCC Pollyanna 638U

OCC Confidence 820C

OCC Dixie Erica 942J

OCC Dixie Erica 883F

OCC Emblazon 854E

OCC Juanada 968G

OCC Great Plains 943G

OCC Pollyanna 944H

OCC Big Time 746Z

OCC Dixie Erica 628W

OCC Zodiac 655Z

OCC Dixie Erica 803X

Production EPDs			
CED	BW	WW	YW
9	-.1	36	61

Maternal EPDs			\$Values
CEM	Milk	FL	\$EN
4	23	1.19	N/A

Individual Birth Wt. Ratios, Fleshing Score			
BW	Weaning	Yearling	Fleshing
60	98	100	8

A very long & complete bull sired by 998J. His maternal

great granddam is the excellent 803X cow. Many other great cows in his 3-generation pedigree also – 968G, 638U, 944H, and 628W.



OCC LUCKY LUKE 9125L

Calved 12/3/23

21539765

OCC Echelon 857E

OCC He's So Right 920H

OCC Dixie Erica 803X

OCC Fair Deal 854F

OCC Dixie Erica 962J

OCC Dixie Erica 753G

DHD Traveler 680T

Dixie Erica of C H 1019

OCC Eureka 865E

OCC Dixie Erica 612H

OCC Moderator 825M

OCC Juanada 570W

OCC Dakota 687D

OCC Dixie Erica 651C

Production EPDs			
CED	BW	WW	YW
15	-2.8	28	49

Maternal EPDs			\$Values
CEM	Milk	FL	\$EN
6	21	N/A	23

Individual Birth Wt. Ratios, Fleshing Score			
BW	Weaning	Yearling	Fleshing
56	99	97	8

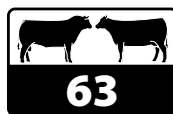
A very low-birth bull that should work well on heifers.

Top 3% of the breed for CED (+15) and top 2% for BW EPD (-2.8). **HEIFER BULL**

CM ANGUS BULLS

Lots 63-65 are consigned by
Clyde Mattson
Manhattan, Kansas

For more information,
Call 785-632-0763 or
email clydem2@yahoo.com



CM MORPHEUS 7101M

Calved 4/10/24

21540565

OCC Homer 650H
OCC Rear End 751R
FCC Revolution Rose 995N

OCC Paxton 730P
CM Merle 972G
CM Merle 802U

OCC Focus 813F
OCC Dixie Erica 816B
OCC Joker 620J
OCC Revolution Rose 887H
OCC Focus 813F
OCC Blackbird 736K
OCC Homer 650H
C M Merle 601S

Production EPDs			
CED	BW	WW	YW
5	1.9	43	69

Maternal EPDs			\$Values
CEM	Milk	FL	\$EN
1	17	1.15	22

Individual Birth Wt. Ratios, Fleshing Score			
BW	Weaning	Yearling	Fleshing
82	96	102	8.5

A thick Rear End son out of a very efficient Paxton daughter. Top 15% of the breed for FL and top 1% for \$EN.



CM MAHALO 7102M

Calved 4/12/24

21540566

OCC Paxton 730P
OCC Epitome 630E
OCC Dixie Erica 730W

Churchill of Wye
CM Churchill's Babine 881F
Newports Babine 90

OCC Focus 813F
OCC Blackbird 736K
OCC Rear End 751R
OCC Dixie Erica 776M

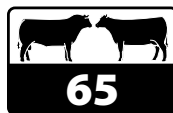
Lodge of Wye
Colleen of Wye
Alap of Wye UMF 8329
Blackbird of Wye UMF 8711

Production EPDs			
CED	BW	WW	YW
8	-0.9	34	53

Maternal EPDs			\$Values
CEM	Milk	FL	\$EN
4	20	1.12	22

Individual Birth Wt. Ratios, Fleshing Score			
BW	Weaning	Yearling	Fleshing
70	106	101	8

A good Epitome 630E son with a low-birth weight EPD. His dam is a very efficient, easy fleshing Churchill of Wye daughter with an old-school Wye pedigree throughout.



CM MOJAVE 7103M

Calved 4/16/24

21540567

OCC Paxton 730P
OCC Epitome 630E
OCC Dixie Erica 730W

Qualton of Wye
CM Qualton's Babine 970G
Newports Babine 90

OCC Focus 813F
OCC Blackbird 736K
OCC Rear End 751R
OCC Dixie Erica 776M

Lonestar of Wye
Quija of Wye
Alap of Wye UMF 8329
Blackbird of Wye UMF 8711

Production EPDs			
CED	BW	WW	YW
9	-1.2	31	50

Maternal EPDs			\$Values
CEM	Milk	FL	\$EN
3	21	1.14	23

Individual Birth Wt. Ratios, Fleshing Score			
BW	Weaning	Yearling	Fleshing
72	108	107	8

Another Epitome 630E son that offers low-birth and top maternal EPDs for FL and \$EN. His dam also has a Wye pedigree and she's a maternal sister to the dam of Lot 64.



RED ANGUS BULLS

Lots 66-68



OCC LEADING LIGHT 967L

Calved 10/11/23 4960584 Red Angus

Redhill P707 Nebula 153Z
OCC Forefront 750F

OCC Vanessa 604C
FEATURED LOT Redhill P707 Nebula 153Z

OCC Vanessa 616F
 OCC Vanessa 607C

Beckton Nebula P P707
 BUF CRK Redpride P154
 OCC Grazer 610Z
 OCC Vanessa 829S
 Beckton Nebula P P707
 BUF CRK Redpride P154
 OCC Grazer 610Z
 OCC Vanessa 829S

Production EPDs			
CED	BW	WW	YW
15	-3.7	55	87

Maternal EPDs			\$Values
CEM	Milk	HB	ProS
6	26	76	112

Individual Birth Wt. Ratios, Fleshing Score			
BW	Weaning	Yearling	Fleshing
72	107	101	8.5

A stout and attractive Red Angus bull that's linebred to both Redhill P707 Nebula 153Z and the Vanessa 829S cow family. He combines low-birth traits with good growth EPDs. Top 11% of the breed for the Herd Builder (HB) EPD, a good selection tool for low-input cow herd traits.



PCL-OCC JULIUS 69M

Calved 3/23/24 5027547 Red Angus

OCC Daylight 848D
OCC Julius 794J
 OCC Vanessa 604C

OCC Home Run 650H
PCL Miss 84K
 SR Miss 9058

Redhill P707 Nebula 153Z
 OCC Vanessa 902B
 OCC Grazer 610Z
 OCC Vanessa 829S

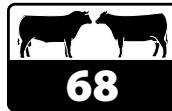
Calvo Titan 64E
 OCC Vanessa 607C
 SR Endre 7070E
 SR 1405B

Production EPDs			
CED	BW	WW	YW
16	-3.3	51	78

Maternal EPDs			\$Values
CEM	Milk	HB	ProS
7	23	81	113

Individual Birth Wt. Ratios, Fleshing Score			
BW	Weaning	Yearling	Fleshing
66	96	95	8.2

A thick and stout son of Julius 794J that offers low-birth and good growth EPDs. Top 9% for HB and top 37% for ProS (Profitability & Sustainability), a combination EPD that includes maternal and carcass traits. Consigned by Peats Creek Livestock, Palmer, KS.



PCL-OCC DAYLIGHT 91M

Calved 9/18/24 5095399 Red Angus

Redhill P707 Nebula 153Z
OCC Daylight 848D
 OCC Vanessa 902B

OCC 119U
OCC Vanessa 895J
 OCC Vanessa 829S

Beckton Nebula P P707
 BUF CRK Redpride P154
 Red Hill B571 Julian 84S
 OCC Vanessa 822P

OCC Linebred 801R
 OCC Belinda 137R
 PCC Colorado Hobo
 OCC Vanessa 768P

Production EPDs			
CED	BW	WW	YW
15	-2.9	60	93

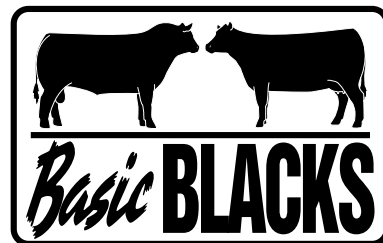
Maternal EPDs			\$Values
CEM	Milk	HB	ProS
7	23	81	119

Individual Birth Wt. Ratios, Fleshing Score			
BW	Weaning	Yearling	Fleshing
64	103	104	8.2

An attractive son of Daylight 848D with top weaning and yearling performance. He also combines low-birth with good growth EPDs. Top 9% for HB and top 29% for ProS. Note that he has a Category 1B registration and is 93.8% Red Angus and 6.2% Fleckvieh. Consigned by Peats Creek Livestock, Palmer, KS.



OCC Vanessa 616F — Dam of Lot 66



BULL & FEMALE SALE

Monday, April 20, 2026 • 1 PM

at the Ranch • Palmer, Kansas

Trudy: 785-630-0522 • Tim: 785-630-0523

ANGUS II[®] BULLS

Developed exclusively at Ohlde Cattle Co. Angus IIs are typically at least 7/8 Angus and offer more consistent fertility, performance and milk production than the registered cattle but with the same or improved calving ease, muscle, carcass quality and fleshing ability.



OCC EQUAL 302M

Calved 2/14/24

Angus II

OCC Moderator 825M
OCC Equal 685E
 OCC Pollyanna 638U

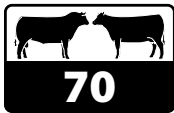
OCC Zar 869Z
OCC Miss 346G
 OCC Valarie 312D

OCC Headliner 661H
 OCC Dixie Erica 845K
 OCC Great Plains 943G
 OCC Pollyanna 944H
 OCC Homer 650H
 OCC Dixie Erica 642U
 OCC Little Big Man 639Z
 OCC Valarie 312Y

Production EPDs			
BW	WW	Milk	YW
-0.4	32	24	58

Individual Birth Wt. Ratios, Fleshing Score			
BW	Weaning	Yearling	Fleshing
70	94	99	8

A very stout Equal 685E son that has recent maternal ancestry to the foundation Valarie cow family. Heterozygous Polled (PH) with a scurred phenotype.



OCC BEST YET 303M

Calved 2/25/24

Angus II

OCC Work of Art 766W
OCC Best Yet 766B
 OCC Dixie Erica 817Y

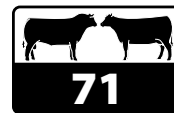
OCC Homer 650H
OCC Miss 301C
 OCC Miss 357A

OCC Great Plains 943G
 OCC Dixie Erica 662J
 OCC Eureka 865E
 OCC Dixie Erica 612H
 OCC Focus 813F
 OCC Dixie Erica 816B
 OCC Jet Stream 825J
 OCC Miss Paxton 4061

Production EPDs			
BW	WW	Milk	YW
-1.2	42	22	85

Individual Birth Wt. Ratios, Fleshing Score			
BW	Weaning	Yearling	Fleshing
80	111	116	8

A very long-bodied Best Yet 766B son with a little more frame. His dam is a highly productive Homer 650H daughter. Excellent weaning and yearling performance.



OCC JOHNNY 312M

Calved 3/24/24

Angus II

OCC Rear End 751R
OCC Johnny Jumbo 708J
 OCC Dixie Erica 607B

FEATURED LOT
OCC Miss 355F
 OCC Accolade 825A
 OCC Miss 371B

OCC Homer 650H
 FCC Revolution Rose 995N
 OCC Paxton 730P
 OCC Dixie Erica 801M
 OCC Paxton 730P
 OCC Dixie Erica 771R
 OCC Solution 362S
 OCC Miss Focus 315R

Production EPDs			
BW	WW	Milk	YW
1.5	48	21	92

Individual Birth Wt. Ratios, Fleshing Score			
BW	Weaning	Yearling	Fleshing
82	111	108	8.5

A powerful Johnny Jumbo son out of a beautiful Accolade daughter. Excellent weaning and yearling performance and top growth EPDs to match.



OCC HERE TO STAY 316M

Calved 3/27/24

Angus II

OCC Zodiac 655Z
OCC Here To Stay 923H
 OCC Dixie Erica 827A

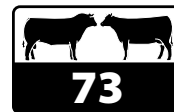
FEATURED LOT
OCC Miss 349Y
 OCC Paxton 730P
 OCC Miss 480P

OCC Umax 820U
 OCC Dixie Erica 628W
 OCC Paxton 730P
 OCC Dixie Erica 771R
 OCC Focus 813F
 OCC Blackbird 736K
 OCC Mitchell 831M
 OCC Miss Eureka 479M

Production EPDs			
BW	WW	Milk	YW
-1.1	42	18	78

Individual Birth Wt. Ratios, Fleshing Score			
BW	Weaning	Yearling	Fleshing
70	92	94	8

An attractive Here To Stay 923H son out of a Paxton daughter that produced 12 calves over her 13 year lifespan.



OCC GALAXY 319M

Calved 3/28/24

Angus II

OCC Dakota 687D
OCC Galaxy 376G
 OCC Miss 404R

OCC Atlas 664A
OCC Miss 399G
 OCC Miss 379D

OCC Zodiac 655Z
 OCC Dixie Erica 839A
 OCC Eureka 865E
 OCC Miss Anchor 488E
 OCC Transformation 680T
 Chloe Dixie Erica 7313
 OCC Rear End 751R
 OCC Miss Paxton 373T

Production EPDs			
BW	WW	Milk	YW
1.2	40	19	72

Individual Birth Wt. Ratios, Fleshing Score			
BW	Weaning	Yearling	Fleshing
76	104	111	8.2

A top performing Galaxy son out of an attractive Atlas daughter that also features Rear End in her pedigree.



OCC HERE FOR GOOD 325M

Calved 3/30/24 Angus II

OCC Zodiac 655Z
OCC Here For Good 924H
 OCC Dixie Erica 827A

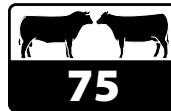
OCC You're Exact 763Y
OCC Miss 332G
 OCC Miss 444W

OCC Umax 820U
 OCC Dixie Erica 628W
 OCC Paxton 730P
 OCC Dixie Erica 771R
 OCC Paxton 730P
 OCC Pollyanna 944H
 OCC Prophet 666P
 OCC Flo 595R

Production EPDs			
BW	WW	Milk	YW
-1.5	42	18	74

Individual Birth Wt. Ratios, Fleshing Score			
BW	Weaning	Yearling	Fleshing
60	99	108	8

A low-birth 924H son with excellent yearling performance. He would work well on heifers. Heterozygous Polled (HP) with a scurred phenotype.



OCC JUDGEMENT 330M

Calved 4/4/24 Angus II

OCC Dakota 687D
OCC Judgement 630J
FEATURED LOT
 OCC Dixie Erica 803X

OCC X-cellent 857X
OCC Miss 359F
 OCC Miss 316C

OCC Zodiac 655Z
 OCC Dixie Erica 839A
 OCC Eureka 865E
 OCC Dixie Erica 612H
 OCC Focus 813F
 OCC Blackcap 872K
 OCC Paxton 300X
 OCC Miss Rear End 316Y

Production EPDs			
BW	WW	Milk	YW
0.2	38	18	65

Individual Birth Wt. Ratios, Fleshing Score			
BW	Weaning	Yearling	Fleshing
84	112	103	8.5

This Judgement 630J son has excellent weaning performance. His maternal granddam, 316C, is a deep-flanked, big-volume cow that brings in a top performing calf every year.



OCC JUDGEMENT 335M

Calved 4/8/24 Angus II

OCC Dakota 687D
OCC Judgement 630J
 OCC Dixie Erica 803X

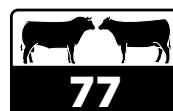
OCC Zar 869Z
OCC Miss 365G
 OCC Miss 307D

OCC Zodiac 655Z
 OCC Dixie Erica 839A
 OCC Eureka 865E
 OCC Dixie Erica 612H
 OCC Homer 650H
 OCC Dixie Erica 642U
 OCC Alpha 700A
 OCC Miss 334B

Production EPDs			
BW	WW	Milk	YW
-1.2	36	17	62

Individual Birth Wt. Ratios, Fleshing Score			
BW	Weaning	Yearling	Fleshing
70	91	95	8.5

Another Judgement 630J son that offers low-birth and excellent maternal traits.



OCC HERE FOR GOOD 343M

Calved 4/9/24 Angus II

OCC Zodiac 655Z
OCC Here For Good 924H
 OCC Dixie Erica 827A

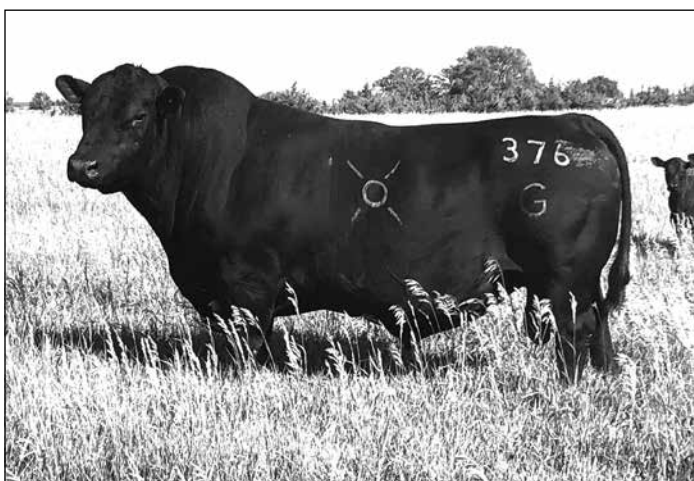
OCC Prestige 672P
OCC Miss 322X
 OCC Miss 522N

OCC Umax 820U
 OCC Dixie Erica 628W
 OCC Paxton 730P
 OCC Dixie Erica 771R
 OCC Headliner 661H
 OCC Dixie Erica 816B
 OCC Eureka 865E
 OCC Miss Anchor 462F

Production EPDs			
BW	WW	Milk	YW
-0.5	42	18	72

Individual Birth Wt. Ratios, Fleshing Score			
BW	Weaning	Yearling	Fleshing
77	109	106	8.2

An attractive 924H son with excellent weaning and yearling performance. His dam, 322X, is an extra stout Prestige daughter that calved with 343M at 14 years of age.



OCC Galaxy 376 G — Sire of Lots 73, 78, and 89.



OCC GALAXY 344M

Calved 4/10/24 Angus II

OCC Dakota 687D
OCC Galaxy 376G
 OCC Miss 404R

OCC Accolade 825A
OCC Miss 346F
 OCC Miss 369B

OCC Zodiac 655Z
 OCC Dixie Erica 839A
 OCC Eureka 865E
 OCC Miss Anchor 488E
 OCC Paxton 730P
 OCC Dixie Erica 771R
 OCC Legend 616L
 OCC Valarie 452L

Production EPDs			
BW	WW	Milk	YW
1.4	40	22	71

Individual Birth Wt. Ratios, Fleshing Score			
BW	Weaning	Yearling	Fleshing
82	118	113	8

A very good Galaxy son with top weaning and yearling performance. His dam is an excellent Accolade daughter that goes back to the great Valarie 452L cow. 452L is also the dam of Power Baldy 063W, a bull that has played a big role in our Fleck-Angus and Composite programs through his sons Guess What 162G and Red Gem 171G.



OCC EXTRA POWER 349M

Calved 4/11/24 Angus II

OCC Paxton 730P
OCC Extra Power 307E
 OCC Miss 404R

OCC Alpha 700A
OCC Miss 307D
 OCC Miss 334B

OCC Focus 813F
 OCC Blackbird 736K
 OCC Eureka 865E
 OCC Miss Anchor 488E

OCC X-tra Easy 708X
 OCC Dixie Erica 806Y
 OCC Thumper 819T
 OCC Miss 302U

Production EPDs			
BW	WW	Milk	YW
0.2	38	22	68

Individual Birth Wt. Ratios, Fleshing Score			
BW	Weaning	Yearling	Fleshing
78	101	100	8.5

A good Extra Power 307E son that will sire excellent replacement females. His dam is a very moderate Alpha daughter that is smooth-made and slick-haired.



OCC HERE FOR GOOD 352M

Calved 4/12/24 Angus II

OCC Zodiac 655Z
OCC Here For Good 924H
 OCC Dixie Erica 827A

OCC Zodiac 655Z
OCC Miss 370C
 OCC Miss 363Z

OCC Umax 820U
 OCC Dixie Erica 628W
 OCC Paxton 730P
 OCC Dixie Erica 771R

OCC Umax 820U
 OCC Dixie Erica 628W
 OCC Paxton's Fleck 154W
 OCC Miss 312W

Production EPDs			
BW	WW	Milk	YW
1.1	40	16	72

Individual Birth Wt. Ratios, Fleshing Score			
BW	Weaning	Yearling	Fleshing
84	96	103	8.5

924H has sired a great set of calves on Angus II cows. This bull's dam, 370C, is a very easy fleshing Zodiac daughter with worlds of depth and volume. Through his dam, this bull is 3% Fleckvieh but given the low percentage, we chose to leave him in the Angus II group.



OCC HERE FOR GOOD 357M

Calved 4/14/24 Angus II

OCC Zodiac 655Z
OCC Here For Good 924H
 OCC Dixie Erica 827A

OCC Dakota 687D
OCC Miss 315G
 OCC Miss 342W

OCC Umax 820U
 OCC Dixie Erica 628W
 OCC Paxton 730P
 OCC Dixie Erica 771R

OCC Zodiac 655Z
 OCC Dixie Erica 839A
 OCC Solution 362S
 OCC Miss Paxton 378T

Production EPDs			
BW	WW	Milk	YW
-0.5	40	17	68

Individual Birth Wt. Ratios, Fleshing Score			
BW	Weaning	Yearling	Fleshing
78	92	95	8.2

Another good 924H son with moderate birth and good growth EPDs.



OCC FRIENDLY 368M

Calved 4/15/24 Angus II

OCC Alpha 700A
OCC Friendly 718F
 Chloe Dixie Erica 7313

OCC X-tra Easy 708X
OCC Miss 306F
 OCC Miss 401C

OCC X-tra Easy 708X
 OCC Dixie Erica 806Y
 Papa Forte 1921
 OCC Dixie Erica 826J

OCC No Problems 52N
 OCC Dixie Erica 678T
 OCC No Problems 52N
 OCC Miss 425A

Production EPDs			
BW	WW	Milk	YW
0.8	36	21	72

Individual Birth Wt. Ratios, Fleshing Score			
BW	Weaning	Yearling	Fleshing
78	97	100	8

This Friendly 718F son has an interesting pedigree that includes the sire No Problems 52N three times.



OCC HERE FOR GOOD 371M

Calved 4/19/24 Angus II

OCC Zodiac 655Z
OCC Here For Good 924H
 OCC Dixie Erica 827A

OCC Paxton 300X
OCC Miss 337D
 OCC Miss 363Z

OCC Umax 820U
 OCC Dixie Erica 628W
 OCC Paxton 730P
 OCC Dixie Erica 771R

OCC Paxton 730P
 OCC Miss Emblazon 512L
 OCC Paxton's Fleck 154W
 OCC Miss 312W

Production EPDs			
BW	WW	Milk	YW
0.2	40	21	71

Individual Birth Wt. Ratios, Fleshing Score			
BW	Weaning	Yearling	Fleshing
74	96	106	8.5

A thick 924H son with very moderate birth and excellent yearling performance. Through his dam, this bull is 3% Fleckvieh but we chose to include him in the Angus II bull group.



OCC Dixie Erica 628W — Dam of herdsires Zodiac 655Z, Blueprint 632B, and Confidence 820C.



OCC FUTURE 375M

Calved 4/23/24

Angus II

OCC Focus 813F

OCC Future 635F

OCC Pollyanna 683X

OCC Paxton 730P

OCC Miss 407Y

OCC Miss Emblazon 512L

Basin Rainmaker 654X

Dixie Erica of CH 1019

OCC Remarkabull 937R

OCC Pollyanna 944H

OCC Focus 813F

OCC Blackbird 736K

OCC Emblazon 854E

OCC Miss Anchor 358F

Production EPDs			
BW	WW	Milk	YW
-0.5	38	16	71

Individual Birth Wt. Ratios, Flething Score			
BW	Weaning	Yearling	Flething
70	91	97	8.2

This bull's dam, 407Y, is a daughter of the foundation Angus II cow Miss Emblazon 512L. 407Y produced a calf every year until the age of 14.



OCC FRIENDLY 381M

Calved 4/24/24

Angus II

OCC Alpha 700A

OCC Friendly 718F

Chloe Dixie Erica 7313

OCC Night Watch 902N

OCC Miss 376J

OCC Miss 365G

OCC X-tra Easy 708X

OCC Dixie Erica 806Y

Papa Forte 1921

OCC Dixie Erica 826J

OCC Linebred 661L

OCC Primrose 931L

OCC Zar 869Z

OCC Miss 307D

Production EPDs			
BW	WW	Milk	YW
-2.2	36	18	65

Individual Birth Wt. Ratios, Flething Score			
BW	Weaning	Yearling	Flething
50	98	102	8

A very low-birth 718F son that should work well on heifers. His pedigree is stacked with calving ease sires such as Alpha, Night Watch, Linebred, and Zar.



OCC HERE FOR GOOD 385M

Calved 4/28/24

Angus II

OCC Zodiac 655Z

OCC Here For Good 924H

OCC Dixie Erica 827A

OCC Accolade 825A

OCC Miss 355E

OCC Miss 358B

OCC Umax 820U

OCC Dixie Erica 628W

OCC Paxton 730P

OCC Dixie Erica 771R

OCC Paxton 730P

OCC Dixie Erica 771R

OCC Wholesome 667W

OCC Miss 319X

Production EPDs			
BW	WW	Milk	YW
1.2	50	22	85

Individual Birth Wt. Ratios, Flething Score			
BW	Weaning	Yearling	Flething
87	116	108	8

A 924H son with excellent weaning and yearling performance. His dam, 355E, is a powerful Accolade daughter.



OCC HERE FOR GOOD 396M

Calved 5/4/24

Angus II

OCC Zodiac 655Z

OCC Here For Good 924H

OCC Dixie Erica 827A

OCC Zebron 871Z

OCC Miss 360G

OCC Miss 314W

OCC Umax 820U

OCC Dixie Erica 628W

OCC Paxton 730P

OCC Dixie Erica 771R

OCC Rear End 751R

OCC Pollyanna 944H

OCC Practical 841P

OCC Miss 340S

Production EPDs			
BW	WW	Milk	YW
2.1	42	21	75

Individual Birth Wt. Ratios, Flething Score			
BW	Weaning	Yearling	Flething
92	98	99	8

Another attractive 924H son out of the excellent 360G cow that features Rear End, Anchor, and Practical in her pedigree.



OCC HAS IT ALL 400M

Calved 5/11/24

Angus II

OCC Zodiac 655Z

OCC Has It All 925H

OCC Dixie Erica 827A

OCC No Problems 52N

OCC Miss 320D

OCC Miss 350B

OCC Umax 820U

OCC Dixie Erica 628W

OCC Paxton 730P

OCC Dixie Erica 771R

OCC Focus 813F

OCC Dixie Erica 816B

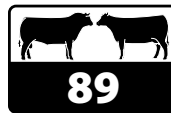
OCC You're Stout 677Y

OCC Miss Eureka 411M

Production EPDs			
BW	WW	Milk	YW
-0.5	42	21	72

Individual Birth Wt. Ratios, Flething Score			
BW	Weaning	Yearling	Flething
78	112	117	8.2

This 925H son has moderate birth and top weaning and yearling performance. His dam, 320D, weans one of the top performing calves every year.



OCC GALAXY 404M

Calved 5/1/24

Angus II

OCC Dakota 687D

OCC Galaxy 376G

OCC Miss 404R

OCC Paxton 300X

OCC Miss 343D

OCC Miss 480Z

OCC Zodiac 655Z

OCC Dixie Erica 839A

OCC Eureka 865E

OCC Miss Anchor 488E

OCC Paxton 730P

OCC Miss Emblazon 512L

OCC Jet Stream 825J

OCC Miss Anchor 462F

Production EPDs			
BW	WW	Milk	YW
0.5	38	19	70

Individual Birth Wt. Ratios, Flething Score			
BW	Weaning	Yearling	Flething
82	93	93	8

Another Galaxy son that will sire those efficient replacement females that are in great demand.



OCC GREAT ONE 405M

Calved 4/1/24

Angus II

OCC Legacy 839L

OCC Great One 803G

OCC Dixie Erica 827A

OCC Rear End 751R

OCC Miss 420C

OCC Miss 433Z

OCC Echelon 857E

OCC Dixie Erica 960E

OCC Paxton 730P

OCC Dixie Erica 771R

OCC Homer 650H

FCC Revolution Rose 995N

OCC Umax 820U

OCC Miss Eureka 506P

Production EPDs			
BW	WW	Milk	YW
-0.2	45	19	82

Individual Birth Wt. Ratios, Fleshing Score			
BW	Weaning	Yearling	Fleshing
77	104	98	8.2

This bull is sired by Great One 803G, the Legacy son out of the great 827A donor cow. We've been very impressed with the 803G calves. This bull offers moderate birth with very good growth EPDs.



OCC EQUAL 407M

Calved 5/18/24

Angus II

OCC Moderator 825M

OCC Equal 685E

OCC Pollyanna 638U

OCC Practical 841P

OCC Miss 376Z

OCC Miss 522N

OCC Headliner 661H

OCC Dixie Erica 845K

OCC Great Plains 943G

OCC Pollyanna 944H

OCC Focus 813F

OCC Juanada 968G

OCC Eureka 865E

OCC Miss Anchor 462F

Production EPDs			
BW	WW	Milk	YW
-1.4	35	18	59

Individual Birth Wt. Ratios, Fleshing Score			
BW	Weaning	Yearling	Fleshing
78	92	92	8

A nice Equal son out of an older, highly proven dam. The 376Z cow was an easy fleshing, slick-haired Practical daughter that produced a calf every year until 13 years of age. Heterozygous Polled (PH) with a scurred phenotype.



OCC ZAR 645M

Calved 3/28/24

Angus II

OCC Homer 650H

OCC Zar 869Z

OCC Dixie Erica 642U

OCC Accolade 825A

OCC Miss 683K

OCC Miss 609F

OCC Focus 813F

OCC Dixie Erica 816B

OCC Paxton 730P

OCC Dixie Erica 801M

OCC Paxton 730P

OCC Dixie Erica 771R

OCC Wholesome 667W

OCC Dixie Erica 621Z

Production EPDs			
BW	WW	Milk	YW
-1.5	42	19	75

Individual Birth Wt. Ratios, Fleshing Score			
BW	Weaning	Yearling	Fleshing
62	111	107	8.5

This Zar 869Z son combines very low-birth with excellent weaning and yearling performance. He should work well on heifers. His dam is a maternal sister to the bull that sells as Lot 95.



OCC EQUAL 406M

Calved 5/16/24

Angus II

OCC Moderator 825M

OCC Equal 685E

OCC Pollyanna 638U

OCC Fanfare 323F

OCC Miss 91J

OCC Miss 373E

OCC Headliner 661H

OCC Dixie Erica 845K

OCC Great Plains 943G

OCC Pollyanna 944H

OCC Paxton 730P

OCC Miss 404R

OCC Zar 869Z

OCC Miss 387C

Production EPDs			
BW	WW	Milk	YW
-0.5	68	23	65

Individual Birth Wt. Ratios, Fleshing Score			
BW	Weaning	Yearling	Fleshing
75	101	98	8.2

A very thick and deep-bodied Equal son that will sire those efficient, easy fleshing replacement females.



OCC HERE FOR GOOD 412M

Calved 5/15/24

Angus II

OCC Zodiac 655Z

OCC Here For Good 924H

OCC Dixie Erica 827A

OCC Zuk 681Z

OCC Miss 349D

OCC Miss 302U

OCC Umax 820U

OCC Dixie Erica 628W

OCC Paxton 730P

OCC Dixie Erica 771R

OCC Eureka 865E

OCC Dixie Erica 645U

OCC Prototype 847P

OCC Miss 305L

Production EPDs			
BW	WW	Milk	YW
-0.1	40	18	68

Individual Birth Wt. Ratios, Fleshing Score			
BW	Weaning	Yearling	Fleshing
76	109	102	8.2

Another 924H son with moderate birth and excellent weaning and yearling performance.



OCC EQUAL 711M

Calved 4/9/24

Angus II

OCC Moderator 825M

OCC Equal 685E

OCC Pollyanna 638U

OCC Wholesome 667W

OCC Miss 609F

OCC Dixie Erica 621Z

OCC Headliner 661H

OCC Dixie Erica 845K

OCC Great Plains 943G

OCC Pollyanna 944H

OCC Practical 841P

OCC Juanada 664R

OCC Priority 357X

OCC Dixie Erica 662J

Production EPDs			
BW	WW	Milk	YW
0.2	39	24	68

Individual Birth Wt. Ratios, Fleshing Score			
BW	Weaning	Yearling	Fleshing
86	100	96	8.5

An attractive Equal 685E son with a little more frame. His dam, 609F, is an easy fleshing, deep-flanked, big-volume Wholesome daughter that has a model phenotype for low-input cow efficiency.

THE OCC FLECKVIEH-ANGUS BULL PROGRAM

We selected 20 Fleckvieh cows in the 1,000-head Arnold Brother's dispersal in 2001. The cows we picked were smaller framed, dark red, very easy fleshing, good uddered and in the top 10% in production records.

We knew the cows were good, but they proved to be way better than we hoped. I selected and imported a group of these Austrian Fleckvieh in 1972-1974. The 10 best females of this group went to the Arnold Brothers and they were the basis of many of the cows I bought from them in 2001.

We then bred these cattle to our OCC Angus bulls and the result is our Fleck-Angus cattle. These are not typical Simm-Angus cattle. They are more range oriented. The frame, muscle, fleshing ability, udder quality and calving ease nearly match our Angus and Angus II cattle today. I warn you, if you try these cattle you might become addicted to them.

THEY ARE GOOD!



OCC GO POWER 052M

Calved 3/16/24 11% Fleckvieh, 3% HP, 86% Angus II

OCC Atlas 664A
OCC Go Power 172G
OCC Eden 181E

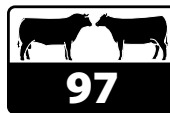
OCC Atlas 664A
OCC Miss 051K
OCC Miss 054H

OCC Transformation 680T
Chloe Dixie Erica 7313
OCC X-tra Easy 708X
OCC Breeze 193B
OCC Transformation 680T
Chloe Dixie Erica 7313
OCC Exceptional Blaze 149E
OCC Miss 053B

Production EPDs			
BW	WW	Milk	YW
-3.1	53	20	87

Individual Birth Wt. Ratios, Fleshing Score			
BW	Weaning	Yearling	Fleshing
66	93	94	8.5

A very low-birth Go Power 172G son that is double bred to Atlas 664A. His maternal granddam, 054H, is a gorgeous 149E daughter. Heterozygous Black (Ede) and Homozygous Polled (PP).



OCC GEM 056M

Calved 3/31/24 12% Fleckvieh, 16% HP, 72% Angus II

OCC Power Baldy 063W
OCC Red Gem 171G
OCC Yasmin 184Y

OCC Zar 869Z
OCC Miss 050H
OCC Miss 059F

BTF 4 3119 ET
OCC Valarie 452L
OCC Realist 641R
OCC Sophie 131S
OCC Homer 650H
OCC Dixie Erica 642U
OCC Zebron 871Z
OCC Miss 053B

Production EPDs			
BW	WW	Milk	YW
-0.7	52	21	75

Individual Birth Wt. Ratios, Fleshing Score			
BW	Weaning	Yearling	Fleshing
77	95	99	8

A balanced & attractive blaze-faced Red Gem 171G son with moderate birth and good growth EPDs. His dam is a maternal sister to the dam of Lot 96. Heterozygous Black (Ede) and Homozygous Polled (PP).



OCC GUESS WHAT 059M

Calved 4/5/24 13% Fleckvieh, 19% HP, 68% Angus II

OCC Power Baldy 063W
OCC Guess What 162G

FEATURED LOT

OCC Yolanda 181Y
OCC Miss 050J
OCC Perflektion 111A
OCC Miss 052A

BTF 4 3119 ET
OCC Valarie 452L
OCC Wide-Body 838W
OCC Legends Naomi 126N
OCC You're The One 610Y
OCC Willa 122W
OCC Power Baldy 063W
OCC Trixie 100T

Production EPDs			
BW	WW	Milk	YW
1.4	60	21	85

Individual Birth Wt. Ratios, Fleshing Score			
BW	Weaning	Yearling	Fleshing
68	109	109	8

This Guess What 162G son offers low-birth combined with top weaning and yearling performance. A very stout, long-bodied, blaze-faced bull. Red (ee) and Horned (HH) phenotype.



OCC HAVE IT MADE 063M

Calved 4/20/24 17% Fleckvieh, 6% HP, 77% Angus II

OCC Atlas 664A
OCC Have It Made 125H
OCC Miss 109F

OCC Zebron 871Z
OCC Miss 059F
OCC Miss 053B

OCC Transformation 680T
Chloe Dixie Erica 7313
OCC Gulf Stream 183Z
OCC Miss 106B
OCC Rear End 751R
OCC Pollyanna 944H
OCC Power Baldy 063W
MFI Black Litta 7078

Production EPDs			
BW	WW	Milk	YW
-1	57	20	85

Individual Birth Wt. Ratios, Fleshing Score			
BW	Weaning	Yearling	Fleshing
78	105	106	8.2

A stout 125H son out of a beautiful 871Z daughter with a perfect udder. Moderate birth with top weaning and yearling performance. Homozygous Black (EDED) and Polled (PP).



OCC GUESS WHAT 065M

Calved 4/24/24 6% Fleckvieh, 13% HP, 81% Angus II

OCC Power Baldy 063W
OCC Guess What 162G
OCC Yolanda 181Y

OCC Y Not 388Y
OCC Miss 318C
OCC Miss 312Y

BTF 4 3119 ET
OCC Valarie 452L
OCC Wide-Body 838W
OCC Legends Naomi 126N
OCC Night Watch 902N
OCC Juanada 723S
Lavenham Minotaur
OCC Valarie 399H

Production EPDs			
BW	WW	Milk	YW
0.3	55	23	77

Individual Birth Wt. Ratios, Fleshing Score			
BW	Weaning	Yearling	Fleshing
80	106	100	8

A very eye appealing BWF bull sired by Guess What. His dam is a productive Angus II cow from the Valarie cow family that weans a heavy calf every year. Heterozygous Black (Ede). Heterozygous Black (Ede) and Homozygous Polled (PP).



OCC GEM 066M

Calved 4/26/24 19% Fleckvieh, 19% HP, 62% Angus II

OCC Power Baldy 063W
OCC Red Gem 171G
OCC Yasmin 184Y

OCC Exceptional Blaze 149E
OCC Miss 053J
OCC Miss 053B

BTF 4 3119 ET
OCC Valarie 452L
OCC Realist 641R
OCC Sophie 131S
OCC Anvil 809A
OCC Scarlett 111S
OCC Power Baldy 063W
MFI Black Litta 7078

Production EPDs			
BW	WW	Milk	YW
0.7	49	23	68

Individual Birth Wt. Ratios, Fleshing Score			
BW	Weaning	Yearling	Fleshing
87	107	102	8

An impressive Red Gem son out of a beautiful 149E daughter. Very good weaning and yearling performance. Red phenotype (ee) and Homozygous Polled (PP).



OCC HAVE IT MADE 067M

Calved 4/26/24 17% Fleckvieh, 6% HP, 77% Angus II

OCC Atlas 664A
OCC Have It Made 125H
OCC Miss 109F

OCC Gulf Stream 183Z
OCC Miss 054G
OCC Miss 059B

OCC Transformation 680T
Chloe Dixie Erica 7313
OCC Gulf Stream 183Z
OCC Miss 106B
OCC Jet Stream 939W
OCC Toni 134T
OCC Power Baldy 063W
OCC Nadia 127N

Production EPDs			
BW	WW	Milk	YW
-1.1	52	21	83

Individual Birth Wt. Ratios, Fleshing Score			
BW	Weaning	Yearling	Fleshing
74	93	96	8.2

A very smooth-made, clean-headed bull with a lot of balance. Sired by 125H, his dam is a gorgeous Gulf Stream daughter. Heterozygous Black (Ede) and Homozygous Polled (PP).



OCC HALF BLAZE 068M

Calved 4/20/24 25% Fleckvieh, 25% HP, 50% Angus II

OCC Exceptional Blaze 149E
OCC Half Blaze 056H
OCC Miss 077C

OCC Exceptional Blaze 149E
OCC Miss 052J
OCC Miss 077C

OCC Anvil 809A
OCC Scarlett 111S
OCC Zorro 067Z
OCC Belinda 137R
OCC Anvil 809A
OCC Scarlett 111S
OCC Zorro 067Z
OCC Belinda 137R

Production EPDs			
BW	WW	Milk	YW
0.5	44	22	64

Individual Birth Wt. Ratios, Fleshing Score			
BW	Weaning	Yearling	Fleshing
75	97	95	8

This closely linebred bull is double bred to 149E and the powerful 077C cow. His dam, 052J, is a beautiful cow with a perfect udder. Heterozygous Black and Polled (Ede and PH).



OCC GO POWER 100M

Calved 4/5/24 12.5% Fleckvieh, 12.5% HP, 75% Angus II

OCC Atlas 664A
OCC Go Power 172G
OCC Eden 181E

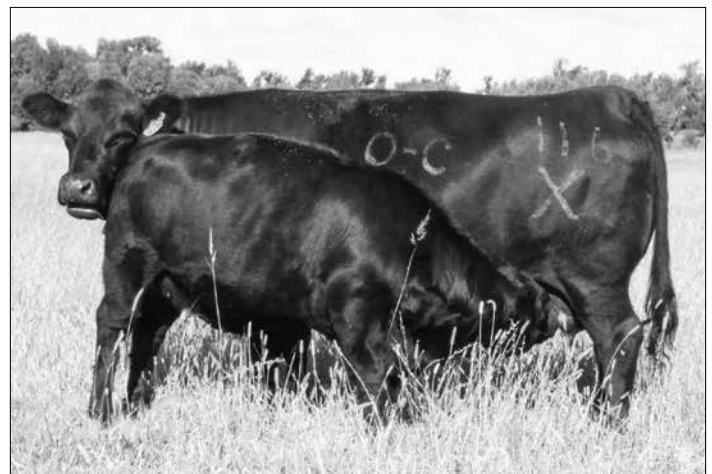
OCC Wholesome 667W
OCC Miss 135H
OCC Xara 116X

OCC Transformation 680T
Chloe Dixie Erica 7313
OCC X-tra Easy 708X
OCC Breeze 193B
OCC Practical 841P
OCC Juanada 664R
OCC Transformation 680T
OCC Toni 134T

Production EPDs			
BW	WW	Milk	YW
-0.9	50	21	85

Individual Birth Wt. Ratios, Fleshing Score			
BW	Weaning	Yearling	Fleshing
80	97	99	8

A very good, well balanced red bull sired by Go Power 172G. His maternal granddam is the 116X cow that's a maternal sister to Gulf Stream 183Z. Red phenotype (ee) and Homozygous Polled (PP).



OCC Xara 116X — The maternal granddam of Lot 104.



OCC BLUEPRINT 103M

105

Calved 4/5/24 12.5% Fleckvieh, 87.5% Angus

OCC Moderator 825M
OCC Blueprint 632B
OCC Dixie Erica 628W

OCC Zodiac 655Z
OCC Miss 298J
OCC Priscilla 158P

OCC Headliner 661H
OCC Dixie Erica 845K
OCC Practical 841P
Chloe Dixie Erica 7313

OCC Umax 820U
OCC Dixie Erica 628W
OCC Jet Stream 825J
Miss Arnold E1007

Production EPDs			
BW	WW	Milk	YW
-0.7	58	23	87

Individual Birth Wt. Ratios, Fleshing Score			
BW	Weaning	Yearling	Fleshing
70	101	98	8.2

This Blueprint son offers very moderate birth with good growth EPDs. His dam is a young ¼ Fleckvieh daughter of Zodiac from our ET program. Homozygous Black (EDED) and Polled (PP).



OCC FUTURE 104M

106

Calved 4/6/24 25% Fleckvieh, 75% Angus

OCC Focus 813F
OCC Future 635F
OCC Pollyanna 683X

OCC Mitchell 831M
MFI Black Flora 9070
MFI Flora 7033

Basin Rainmaker 654X
Dixie Erica of C H 1019
OCC Remarkabull 937R
OCC Pollyanna 944H

OCC Hunter 928H
OCC Erica Lassie 839J
IPU Bronson 19K
MFI Flora 4128

Production EPDs			
BW	WW	Milk	YW
-0.4	52	20	80

Individual Birth Wt. Ratios, Fleshing Score			
BW	Weaning	Yearling	Fleshing
77	105	101	8

An attractive Future 635F son with good weaning and yearling performance. He will sire those functional replacement females that are in high demand. Heterozygous Black (Ede) and Homozygous Polled (PP).



OCC HERE FOR GOOD 120M

107

Calved 4/7/24 12.5% Fleckvieh, 87.5% Angus

OCC Zodiac 655Z
OCC Here For Good 924H
OCC Dixie Erica 827A

OCC You're Exact 763Y
OCC Miss 153G
MFI Black Lolita 8086

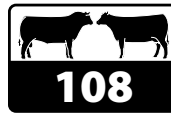
OCC Umax 820U
OCC Dixie Erica 628W
OCC Paxton 730P
OCC Dixie Erica 771R

OCC Paxton 730P
OCC Pollyanna 944H
OCC Paxton 730P
MFI Lolita 6190

Production EPDs			
BW	WW	Milk	YW
-2	59	20	91

Individual Birth Wt. Ratios, Fleshing Score			
BW	Weaning	Yearling	Fleshing
70	106	110	8.2

A top performing 924H son out of an attractive 1/8 Fleckvieh dam sired by You're Exact 763Y. Homozygous Black (EDED) and Polled (PP).



OCC JUDGEMENT 123M

108

Calved 4/11/24 3% Fleckvieh, 97% Angus

OCC Dakota 687D
OCC Judgement 630J
OCC Dixie Erica 803X

OCC Unbelievable 851U
OCC Miss 142F
OCC Miss 107D

OCC Zodiac 655Z
OCC Dixie Erica 839A
OCC Eureka 865E
OCC Dixie Erica 612H

OCC Practical 841P
OCC Pollyanna 944H
OCC Transformation 680T
OCC Miss 155B

Production EPDs			
BW	WW	Milk	YW
-1.9	50	17	76

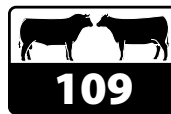
Individual Birth Wt. Ratios, Fleshing Score			
BW	Weaning	Yearling	Fleshing
82	92	92	8.5

We've been very impressed by the Judgement 630J calves. This son offers a nice balance of low-birth and higher growth EPDs. Homozygous Black (EDED) and Polled (PP).

Fleckvieh-Angus



OCC Miss 107Z — The dam of Lot 109 and maternal granddam of Lot 120. Pictured at 13 years of age.



OCC GEM 124M

109

Calved 4/11/24 37.5% Fleckvieh, 12.5% HP, 50% Angus II

OCC Power Baldy 063W
OCC Red Gem 171G
OCC Yasmin 184Y

FEATURED LOT

OCC Jet Stream 825J
OCC Miss 107Z
Miss Arnold F9708

BTF 4 3119 ET
OCC Valarie 452L
OCC Realist 641R
OCC Sophie 131S

OCC Emblazon 854E
OCC Juanada 968G
Sir Arnold B9018A
Miss Arnold D9496

Production EPDs			
BW	WW	Milk	YW
0.9	58	26	88

Individual Birth Wt. Ratios, Fleshing Score			
BW	Weaning	Yearling	Fleshing
88	109	115	8.2

This bull possesses extreme length and muscle. He's a very impressive individual. His dam, 107Z, has been a consistent producer of top performing calves. At 14 years of age, she remains sound and has produced a total of 13 calves to date. Heterozygous Black (Ede) and Homozygous Polled (PP).



OCC GEM 125M

Calved 4/11/24 14% Fleckvieh, 13% HP, 73% Angus II

OCC Power Baldy 063W

OCC Red Gem 171G

OCC Yasmin 184Y

FEATURED LOT

OCC Captain 271C

OCC Miss 149G

OCC Miss 123D

BTF 4 3119 ET

OCC Valarie 452L

OCC Realist 641R

OCC Sophie 131S

OCC Gulf Stream 183Z

OCC Zelda 274Z

OCC Paxton 300X

OCC Miss 105Z

Production EPDs			
BW	WW	Milk	YW
0.1	49	22	74

Individual Birth Wt. Ratios, Fleshing Score			
BW	Weaning	Yearling	Fleshing
76	113	114	8

This Red Gem son is thick and massively stout. Top weaning and yearling performance. Red phenotype (ee) and Homozygous Polled (PP).



OCC HERE FOR GOOD 126M

Calved 4/12/24 6% Fleckvieh, 94% Angus

OCC Zodiac 655Z

OCC Here For Good 924H

OCC Dixie Erica 827A

OCC Miss 140D

OCC Paxton 730P

OCC Miss 188Y

OCC Umax 820U

OCC Dixie Erica 628W

OCC Paxton 730P

OCC Dixie Erica 771R

OCC Focus 813F

OCC Blackbird 736K

OCC Wide-Body 838W

MFI Black Frieda 9266

Production EPDs			
BW	WW	Milk	YW
-2.8	59	18	92

Individual Birth Wt. Ratios, Fleshing Score			
BW	Weaning	Yearling	Fleshing
82	106	114	8.5

A moderate framed bull with terrific thickness. Excellent weaning and yearling performance and an impressive spread of low-birth to high growth EPDs. Homozygous Black (EDED) and Polled (PP).



OCC GEM 130M

Calved 4/7/24 25% Fleckvieh, 12.5% HP, 62.5% Angus II

OCC Power Baldy 063W

OCC Red Gem 171G

OCC Yasmin 184Y

FEATURED LOT

OCC Perfection 111A

OCC Haven 0217H

OCC Nadia 127N

BTF 4 3119 ET

OCC Valarie 452L

OCC Realist 641R

OCC Sophie 131S

OCC You're The One 610Y

OCC Willa 122W

OCC Jet Stream 825J

Miss Arnold F9708

Production EPDs			
BW	WW	Milk	YW
-0.1	51	24	74

Individual Birth Wt. Ratios, Fleshing Score			
BW	Weaning	Yearling	Fleshing
78	102	99	8

A red bull with more size and lots of growth. Red phenotype (ee) and Heterozygous Polled (PH).



OCC EXTRA POWER 131M

Calved 4/15/24 6% Fleckvieh, 94% Angus

OCC Paxton 730P

OCC Extra Power 307E

OCC Miss 404R

OCC Miss 168F

OCC Unanimous 637U

OCC Miss 148Z

OCC Focus 813F

OCC Blackbird 736K

OCC Eureka 865E

OCC Miss Anchor 488E

OCC Great Plains 943G

OCC Pollyanna 944H

OCC Transformation 680T

OCC Miss 137W

Production EPDs			
BW	WW	Milk	YW
0.4	53	19	84

Individual Birth Wt. Ratios, Fleshing Score			
BW	Weaning	Yearling	Fleshing
84	116	106	8.2

A very good Extra Power son with excellent weaning and yearling performance. His dam is an attractive daughter of the 148Z cow. Heterozygous Black (Ede) and Polled (PH).



OCC GEM 138M

Calved 4/20/24 12.5% Fleckvieh, 12.5% HP, 75% Angus II

OCC Power Baldy 063W

OCC Red Gem 171G

OCC Yasmin 184Y

FEATURED LOT

OCC Paxton 300X

OCC Miss 123D

OCC Miss 105Z

BTF 4 3119 ET

OCC Valarie 452L

OCC Realist 641R

OCC Sophie 131S

OCC Paxton 730P

OCC Miss Emblazon 512L

OCC Mitchell 336U

OCC Legends Miss 184R

Production EPDs			
BW	WW	Milk	YW
0.6	50	22	82

Individual Birth Wt. Ratios, Fleshing Score			
BW	Weaning	Yearling	Fleshing
72	100	100	8

One of the best red bulls in the sale! He's thick, stout, and attractive. Red phenotype (ee) and Heterozygous Polled (PH).



OCC Miss 190C — A Gulf Stream 183Z daughter that's the dam of Lot 188 and the maternal great granddam of Lot 199.



OCC GEM 141M

Calved 4/21/24 13% Fleckvieh, 19% HP, 68% Angus II

OCC Power Baldy 063W
OCC Red Gem 171G
 OCC Yasmin 184Y

OCC Extra Power 307E
OCC Miss 134J
 MFI Black Robin GER 9071

BTF 4 3119 ET
 OCC Valarie 452L
 OCC Realist 641R
 OCC Sophie 131S
 OCC Paxton 730P
 OCC Miss 404R
 OCC Total 616T
 MFI Miss Robin GER 7197

Production EPDs			
BW	WW	Milk	YW
-0.2	52	22	74

Individual Birth Wt. Ratios, Fleshing Score			
BW	Weaning	Yearling	Fleshing
85	101	95	8

This bull's dam is an attractive ¼ Fleck-Angus II daughter of Extra Power. From a great cow family. Heterozygous Black (Ede) and Polled (PH).



OCC JUMP START 143M

Calved 4/24/24 6% Fleckvieh, 94% Angus

OCC Legend 616L
OCC Jump Start 861J
 OCC Juanada 767G

FEATURED LOT
 OCC Extra Power 307E
OCC Miss 109J
 OCC Geena 159G

OCC Emblazon 854E
 OCC Blackbird 632J
 OCC Atlas 664A
 OCC Juanada 877D
 OCC Paxton 730P
 OCC Miss 404R
 OCC Anvil 809A
 OCC Trixie 100T

Production EPDs			
BW	WW	Milk	YW
-2.4	57	15	92

Individual Birth Wt. Ratios, Fleshing Score			
BW	Weaning	Yearling	Fleshing
66	93	101	8.2

A low-birth, low percentage Fleck-Angus bull that is massively thick with a moderate frame. Homozygous Black (EDED) and Polled (PP).



OCC GEM 144M

Calved 4/26/24 50% Fleckvieh, 12.5% HP, 37.5% Angus II

OCC Power Baldy 063W
OCC Red Gem 171G
 OCC Yasmin 184Y

FEATURED LOT
 OCC Jetfleck 133N
OCC Miss 298J
 Miss Arnold E5562

BTF 4 3119 ET
 OCC Valarie 452L
 OCC Realist 641R
 OCC Sophie 131S
 OCC Jet Stream 925J
 Miss Arnold C5368
 Panzer
 Miss Arnold A5225

Production EPDs			
BW	WW	Milk	YW
1.2	53	29	85

Individual Birth Wt. Ratios, Fleshing Score			
BW	Weaning	Yearling	Fleshing
80	94	98	8

A smooth-made, well balanced, attractive bull out of an impeccable dam. Heterozygous Black (Ede) and Polled (PH).



OCC GEM 152M

Calved 5/1/24 19% Fleckvieh, 12% HP, 69% Angus II

OCC Power Baldy 063W
OCC Red Gem 171G
 OCC Yasmin 184Y

OCC Gulf Stream 183Z
OCC Miss 175H
 OCC Miss 100W

BTF 4 3119 ET
 OCC Valarie 452L
 OCC Realist 641R
 OCC Sophie 131S
 OCC Jet Stream 939W
 OCC Toni 134T
 OCC Remarkabull 937R
 MFI Black Helga 7054

Production EPDs			
BW	WW	Milk	YW
-0.2	51	23	77

Individual Birth Wt. Ratios, Fleshing Score			
BW	Weaning	Yearling	Fleshing
82	92	95	8

A nice 171G son out of a very moderate and efficient Gulf Stream daughter. Heterozygous Black (Ede) and Polled (PH).



OCC Gulf Stream 183Z — Gulf Stream is a great female sire. He's the maternal grandsire of Lots 102, 118, 120, 137, 187, 188, and 198.



OCC GEM 154M

Calved 5/3/24 19% Fleckvieh, 12% HP, 69% Angus II

OCC Power Baldy 063W
OCC Red Gem 171G
 OCC Yasmin 184Y

OCC Exceptional Blaze 149E
OCC Miss 157J
 OCC Miss 167D

BTF 4 3119 ET
 OCC Valarie 452L
 OCC Realist 641R
 OCC Sophie 131S
 OCC Anvil 809A
 OCC Scarlett 111S
 OCC Zodiac 655Z
 OCC Sophie 131S

Production EPDs			
BW	WW	Milk	YW
0.2	49	23	75

Individual Birth Wt. Ratios, Fleshing Score			
BW	Weaning	Yearling	Fleshing
74	92	93	8

A Red Gem son out of an Exceptional Blaze 149E daughter. Red (ee) and Horned (HH).



OCC JUST NOW 156M

Calved 5/4/24 19% Fleckvieh, 81% Angus

OCC Fortress 744F

OCC Just Now 788J

OCC Juanada 808C

OCC Gulf Stream 183Z

OCC Miss 137F

OCC Miss 107Z

OCC Alpha 700A

OCC Dixie Erica 752A

OCC Work of Art 766W

OCC Juanada 641Z

OCC Jet Stream 939W

OCC Toni 134T

OCC Jet Stream 825J

Miss Arnold F9708

Production EPDs			
BW	WW	Milk	YW
-0.4	59	25	93

Individual Birth Wt. Ratios, Fleshing Score			
BW	Weaning	Yearling	Fleshing
78	101	101	8.2

A moderate-birth son of Just Now 788J with good growth EPDs. His dam is a beautiful Gulf Stream daughter. Heterozygous Black (Ede) and Homozygous Polled (PP).



OCC HERE FOR GOOD 157M

Calved 5/1/24 12.5% Fleckvieh, 87.5% Angus

OCC Zodiac 655Z

OCC Here For Good 924H

OCC Dixie Erica 827A

OCC Anvil 809A

OCC Miss 121F

OCC Xandra 157X

OCC Umax 820U

OCC Dixie Erica 628W

OCC Paxton 730P

OCC Dixie Erica 771R

OCC Missing Link 830M

FCC Blackcap Lady 3810

OCC Paxton 730P

Miss Arnold E5562

Production EPDs			
BW	WW	Milk	YW
-2.2	57	22	87

Individual Birth Wt. Ratios, Fleshing Score			
BW	Weaning	Yearling	Fleshing
58	94	101	8.2

A low-birth 924H son with good growth EPDs. Homozygous Black (EDED) and Heterozygous Polled (PH) with a scurred phenotype.



OCC GEM 162M

Calved 5/12/24 12.5% Fleck, 12.5% HP, 75% AN II

OCC Power Baldy 063W

OCC Red Gem 171G

OCC Yasmin 184Y

FEATURED LOT

OCC Perfectiont 111A

OCC Miss 113H

MFI Black Robin GER 9071

BTF 4 3119 ET

OCC Valarie 452L

OCC Realist 641R

OCC Sophie 131S

OCC You're The One 610Y

OCC Willa 122W

OCC Total 616T

MFI Miss Robin GER 7197

Production EPDs			
BW	WW	Milk	YW
1.6	51	26	78

Individual Birth Wt. Ratios, Fleshing Score			
BW	Weaning	Yearling	Fleshing
70	113	117	8

A fantastic red bull out of a fantastic dam. Very moderate birth combined with exceptional weaning and yearling performance. Red phenotype (ee) and Heterozygous Polled (PH).



OCC FRIENDLY 172M

Calved 5/10/24 12.5% Fleckvieh, 87.5% Angus

OCC Alpha 700A

OCC Friendly 718F

Chloe Dixie Erica 7313

OCC Anvil 809A

OCC Miss 157F

OCC Miss 194Y

OCC X-tra Easy 708X

OCC Dixie Erica 806Y

Papa Forte 1921

OCC Dixie Erica 826J

OCC Missing Link 830M

FCC Blackcap Lady 3810

OCC Kiddo 832K

Miss Arnold E5562

Production EPDs			
BW	WW	Milk	YW
-1.6	56	22	86

Individual Birth Wt. Ratios, Fleshing Score			
BW	Weaning	Yearling	Fleshing
75	95	96	8

A very stout and rugged bull sired by 718F. His maternal granddam, 194Y, is a 1/2 Fleck-Angus cow that remains in the herd at 15 years of age and will calve again in 2026 with her 14th calf. Homozygous Black (EDED) and Polled (PP).



OCC ATLAS 202M

Calved 3/14/24 12.5% Fleckvieh, 87.5% Angus

OCC Transformation 680T

OCC Atlas 664A

Chloe Dixie Erica 7313

OCC Rear End 751R

OCC Miss 299J

OCC Scarlett 111S

OCC Focus 813F

OCC Dixie Erica 603N

Papa Forte 1921

OCC Dixie Erica 826J

OCC Homer 650H

FCC Revolution Rose 995N

OCC Jet Stream 825J

OCC Miss Arnold 134M

Production EPDs			
BW	WW	Milk	YW
-1.1	62	20	96

Individual Birth Wt. Ratios, Fleshing Score			
BW	Weaning	Yearling	Fleshing
80	115	106	8.2

This Atlas 664A son is one of the most complete Fleck-Angus bulls in the sale. Excellent weaning and yearling performance. His dam is an impressive young Rear End daughter out of the great 111S cow. Homozygous Black (EDED) and Polled (PP).



OCC Miss 148Z — A 1/4 Fleckvieh, 3/4 Angus cow sired by Transformation 680T. She's the maternal granddam of Lot 113. Pictured with her 2022 bull calf.



OCC FOREFRONT 203M

Calved 3/14/24 3% Fleckvieh, 97% Red Angus

OCC Forefront 750F
Redhill P707 Nebula 153Z
OCC Vanessa 604C

OCC Miss 144K
OCC Daylight 848D
OCC Miss 100H

Beckton Nebula P P707
BUF CRK Redpride P154
OCC Grazer 610Z
OCC Vanessa 829S

Redhill P707 Nebula 153Z
OCC Vanessa 902B
OCC Confidence 820C
OCC Miss 167D

Production EPDs			
BW	WW	Milk	YW
-2.9	57	21	89

Individual Birth Wt. Ratios, Fleshing Score			
BW	Weaning	Yearling	Fleshing
73	97	100	8.2

An impressive red bull with a predominately Red Angus pedigree. Heterozygous Black (Ede) and Homozygous Polled (PP).



OCC TRANSFORMATION 205M

Calved 3/16/24 3% Fleckvieh, 97% Angus

OCC Transformation 680T
OCC Focus 813F
OCC Dixie Erica 603N

OCC Miss 146K
OCC Double Impact 722D
OCC Miss 173C

Basin Rainmaker 654X
Dixie Erica of C H 1019
OCC Joker 620J
OCC Dixie Erica 816B

OCC Jet Stream 825J
OCC Dixie Erica 771R
OCC X-cellent 857X
OCC Miss 102X

Production EPDs			
BW	WW	Milk	YW
-2	52	20	83

Individual Birth Wt. Ratios, Fleshing Score			
BW	Weaning	Yearling	Fleshing
68	94	97	8

A moderate framed, very smooth-made son of Transformation 680T. Low-birth with good growth EPDs. Homozygous Black (EDED) and Polled (PP).



OCC FOREFRONT 207M

Calved 3/18/24 6% Fleckvieh, 94% Red Angus

OCC Forefront 750F
Redhill P707 Nebula 153Z
OCC Vanessa 604C

FEATURED LOT
OCC Miss 163K
OCC Daylight 848D
OCC Haven 0217H

Beckton Nebula P P707
BUF CRK Redpride P154
OCC Grazer 610Z
OCC Vanessa 829S

Redhill P707 Nebula 153Z
OCC Vanessa 902B
OCC Perflektion 111A
OCC Nadia 127N

Production EPDs			
BW	WW	Milk	YW
-3.1	55	22	86

Individual Birth Wt. Ratios, Fleshing Score			
BW	Weaning	Yearling	Fleshing
72	111	102	8.2

Another impressive, high percentage Red Angus bull with excellent weaning and yearling performance. His dam is a young Daylight daughter with a perfect udder. Red phenotype (ee) and Homozygous Polled (PP).



OCC GO POWER 209M

Calved 3/28/24 3% Fleckvieh, 97% Angus

OCC Go Power 172G
OCC Atlas 664A
OCC Eden 181E

OCC Miss 123K
OCC Best Yet 766B
OCC Miss 103G

OCC Transformation 680T
Chloe Dixie Erica 7313
OCC X-tra Easy 708X
OCC Breeze 193B

OCC Work of Art 767W
OCC Dixie Erica 817Y
OCC Zodiac 655Z
OCC Miss 187Z

Production EPDs			
BW	WW	Milk	YW
-1.6	55	20	94

Individual Birth Wt. Ratios, Fleshing Score			
BW	Weaning	Yearling	Fleshing
75	102	108	8.2

A nice Go Power 172G son that combines low-birth with good performance traits. Homozygous Black (EDED) and Polled (PP).



OCC Miss 217K — A daughter of OCC Exceptional Blaze 149E pictured at 2 years of age.



OCC GO POWER 213M

Calved 3/29/24 20% Fleckvieh, 80% Angus

OCC Go Power 172G
OCC Atlas 664A
OCC Eden 181E

FEATURED LOT
OCC Miss 165K
OCC Exceptional Blaze 149E
OCC Scarlett 111S

OCC Transformation 680T
Chloe Dixie Erica 7313
OCC X-tra Easy 708X
OCC Breeze 193B

OCC Anvil 809A
OCC Scarlett 111S
OCC Jet Stream 825J
OCC Miss Arnold 134M

Production EPDs			
BW	WW	Milk	YW
-0.6	51	22	78

Individual Birth Wt. Ratios, Fleshing Score			
BW	Weaning	Yearling	Fleshing
72	108	109	8

A big, stout, and growthy son of Go Power with top weaning and yearling performance. His dam is a daughter of the great 111S cow. Homozygous Black (EDED) and Polled (PP).



OCC CONFIDENCE 215M

Calved 4/1/24 12.5% Fleckvieh, 87.5% Angus

OCC Big Time 746Z
OCC Confidence 820C
OCC Dixie Erica 628W

OCC Anvil 809A
OCC Miss 165E
OCC Nadia 127N

OCC Rear End 751R
OCC Dixie Erica 771R
OCC Practical 841P
Chloe Dixie Erica 7313

OCC Missing Link 830M
FCC Blackcap Lady 3810
OCC Jet Stream 825J
Miss Arnold F9708

Production EPDs			
BW	WW	Milk	YW
-0.1	60	20	97

Individual Birth Wt. Ratios, Fleshing Score			
BW	Weaning	Yearling	Fleshing
77	94	101	8.2

A thick and stout 820C son with very good growth EPDs. Heterozygous Black (Ede) and Polled (PH).



OCC GEM 216M

Calved 4/3/24 19% Fleckvieh, 12% HP, 69% Angus II

OCC Power Baldy 063W
OCC Red Gem 171G
OCC Yasmin 184Y

FEATURED LOT
OCC Dakota 687D

OCC Miss 114H
OCC Scarlett 1115

BTF 4 3119 ET
OCC Valarie 452L
OCC Realist 641R
OCC Sophie 1315
OCC Zodiac 655Z
OCC Dixie Erica 839A
OCC Jet Stream 825J
OCC Miss Arnold 134M

Production EPDs			
BW	WW	Milk	YW
1	52	21	73

Individual Birth Wt. Ratios, Fleshing Score			
BW	Weaning	Yearling	Fleshing
74	104	108	8

A highly attractive RWF bull with red goggle-eyed pigmentation. He will sire terrific replacement females on both Angus and Hereford cows. His dam is a daughter of the great 1115 cow which makes her a maternal sister to Exceptional Blaze 149E. Red phenotype (ee) and Heterozygous Polled (PH).

COMPOSITE BULLS

Lots 132-138



OCC JUMP START 011M

Calved 4/26/24 Composite

OCC Legend 616L
OCC Jump Start 861J
OCC Juanada 767G

FEATURED LOT
OCC Exceptional Blaze 149E

OCC Miss 003K
OCC Miss 31

OCC Emblazon 854E
OCC Blackbird 632J
OCC Atlas 664A
OCC Juanada 877D
OCC Anvil 809A
OCC Scarlett 1115
OCC Texas Black 005C
Beefmaster x Angus

Production EPDs			
BW	WW	Milk	YW
-0.5	38	20	62

Individual Birth Wt. Ratios, Fleshing Score			
BW	Weaning	Yearling	Fleshing
76	94	99	8

This Composite bull is 12.5% Senepol, 6.25% Fleckvieh, 6.25% Beefmaster, and 75% Angus. Sired by a son of Legend 616L, his dam is a smooth-made, slick-haired daughter of Exceptional Blaze 149E. Heterozygous Black (Ede) and Homozygous Polled (PP).



OCC GEM 341M

Calved 4/9/24 Composite

OCC Power Baldy 063W
OCC Red Gem 171G
OCC Yasmin 184Y

FEATURED LOT
OCC Blueprint 632B
OCC Miss 321H

OCC Miss 302F

BTF 4 3119 ET
OCC Valarie 452L
OCC Realist 641R
OCC Sophie 1315

OCC Moderator 825M
OCC Dixie Erica 628W
OCC Alpha 700A
OCC Miss 319D

Production EPDs			
BW	WW	Milk	YW
0.2	42	22	68

Individual Birth Wt. Ratios, Fleshing Score			
BW	Weaning	Yearling	Fleshing
84	99	103	8

An impressive Red Gem 171G son out of a beautiful Angus II cow sired by Blueprint. This composite bull is 12.5% Polled Hereford, 6.25% Fleckvieh, and 81.25% Angus II. Heterozygous Black (Ede) and Homozygous Polled (PP).



OCC GEM 351M

Calved 4/11/24 Composite

OCC Power Baldy 063W
OCC Red Gem 171G
OCC Yasmin 184Y

OCC Accolade 825A
OCC Miss 350H
OCC Miss 321Y

BTF 4 3119 ET
OCC Valarie 452L
OCC Realist 641R
OCC Sophie 1315
OCC Paxton 730P
OCC Dixie Erica 771R
OCC Homer 650H
OCC Miss 314W

Production EPDs			
BW	WW	Milk	YW
0.8	48	24	72

Individual Birth Wt. Ratios, Fleshing Score			
BW	Weaning	Yearling	Fleshing
80	103	96	8

Another good Red Gem 171G son out of an Angus II cow sired by Accolade. This composite bull is 12.5% Polled Hereford, 6.25% Fleckvieh, and 81.25% Angus II. Heterozygous Black (Ede) and Homozygous Polled (PP).

Fleckvieh-Angus

Composite Bulls



OCC GO POWER 363M

135

Calved 4/16/24

Composite

OCC Atlas 664A
OCC Go Power 172G
OCC Eden 181E

OCC Eureka 482Z
OCC Miss 321D
OCC Miss 321Y

OCC Transformation 680T
Chloe Dixie Erica 7313
OCC X-tra Easy 708X
OCC Breeze 193B
OCC Eureka 865E
OCC Miss Emblazon 512L
OCC Homer 650H
OCC Miss 314W

Production EPDs			
BW	WW	Milk	YW
-1.6	52	20	82

Individual Birth Wt. Ratios, Fleshing Score			
BW	Weaning	Yearling	Fleshing
84	104	103	8.2

A Go Power 172G son with very good weaning and yearling performance. His Angus II dam is an attractive granddaughter of Eureka. This composite bull is 98.4% Angus II and only 1.6% Fleckvieh. Heterozygous Black (Ede) and Homozygous Polled (PP).



OCC COW MAKER 366M

136

Calved 4/17/24

Composite

BTF 7841 4F 3613
Southern Cow Maker
FCC Blackcap Lady 3810

OCC Accolade 825A
OCC Miss 312E
OCC Miss 477A

Milkman MS4F
WC 7841F
OCC Anchor 771A
H A Blackcap Lady 0464
OCC Paxton 730P
OCC Dixie Erica 771R
OCC Rear End 751R
OCC Miss 310S

Production EPDs			
BW	WW	Milk	YW
0.5	45	21	71

Individual Birth Wt. Ratios, Fleshing Score			
BW	Weaning	Yearling	Fleshing
85	103	95	8.5

A Southern Cow Maker son out of the powerful 312E Angus II cow. This composite bull is 25% Senepol and 75% Angus II. Heterozygous Black (Ede) and Homozygous Polled (PP).



OCC FUTURE 387M

137

Calved 4/30/24

Composite

OCC Focus 813F
OCC Future 635F
OCC Pollyanna 683X

OCC Gulf Stream 183Z
OCC Miss 312G
OCC Miss 311D

Basin Rainmaker 654X
Dixie Erica of CH 1019
OCC Remarkabull 937R
OCC Pollyanna 944H
OCC Jet Stream 939W
OCC Toni 134T
OCC Paxton 730P
OCC Miss 427W

Production EPDs			
BW	WW	Milk	YW
0.2	42	19	75

Individual Birth Wt. Ratios, Fleshing Score			
BW	Weaning	Yearling	Fleshing
78	95	95	8.2

This predominately Angus II bull has a Gulf Stream 183Z sired dam. This makes him 93.75% Angus II and 6.25% Fleckvieh. He will be a fantastic female sire. Homozygous Black (EDED) and Polled (PP).



OCC EQUAL 398M

138

Calved 5/9/24

Composite

OCC Moderator 825M
OCC Equal 685E
OCC Pollyanna 638U

Southern Cow Maker
OCC Miss 363J
OCC Dixie Erica 621Z

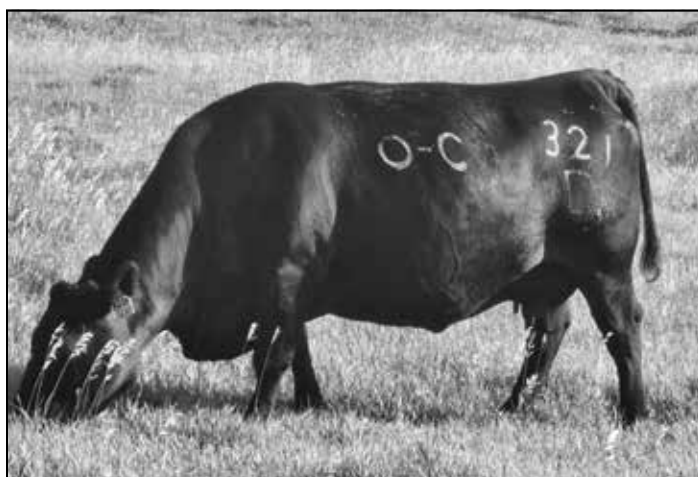
OCC Headliner 661H
OCC Dixie Erica 845K
OCC Great Plains 943G
OCC Pollyanna 944H
BTF 7841 4F 3613
FCC Blackcap Lady 3810
OCC Priority 357X
OCC Dixie Erica 662J

Production EPDs			
BW	WW	Milk	YW
-1.5	35	19	59

Individual Birth Wt. Ratios, Fleshing Score			
BW	Weaning	Yearling	Fleshing
78	100	96	8.2

A very good Equal son out of an exceptional cow family that goes back to the 662J cow. His dam is sired by Southern Cow Maker and that makes him 12.5% Senepol and 87.5% Angus II.

Composite Bulls



OCC Miss 321D — The dam of Lot 135.

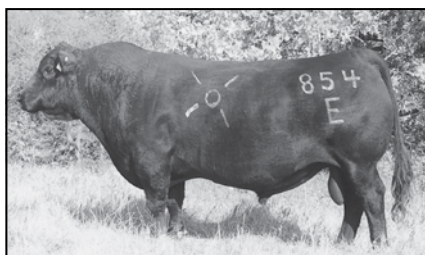


OCC Miss 312E — An Accolade 825A daughter that's the dam of Lot 136.

SEMEN ORDERS

Trudy: 785-630-0522 • Tim: 785-630-0523

Visit OhIdeCattle.com for a complete list of bulls. Please call and order semen by Noon Friday April 18 if you would like to pick up your semen order at the sale for a 10% discount. Delivery to your doorstep is always available as usual but not qualified for the discount. We would love to visit regarding the best choices for your needs. 785-630-0522



2026 Sire Directory

Sire	Registration #	Straw	Cert
OCC Emblazon 845E	#12514348	Call	\$50
OCC Paxton 730P	#14940735	Call	\$40
OCC X-tra Easy 708X ★	#17190960	\$20	\$35
OCC Linebred 661L ★	#14051770	\$50	\$40
OCC Best Yet 766B	#18413646	\$20	\$40
OCC Zar 869Z ★	#17995884	\$25	\$35
OCC Alpha 700A ★	#18041805	\$25	N/A
OCC Hunter 928H	#13354639	\$20	\$35
OCC Confidence 820C	#15289755	\$25	\$40
OCC Eureka 865E	#12514352	Call	\$40
OCC Missing Link 830M	#14456399	\$20	\$40
OCC X-cel 652X	#16877211	\$20	\$35
OCC Blueprint 632B ★	#18396008	Call	\$40
OCC Picture Perfect 738P ★	#14940739	\$20	\$35
OCC Dakota 687D	#19067883	\$25	\$40
OCC Epitome 630E	#19391475	\$35	\$40
OCC Accolade 825A	#18078529	\$20	\$40
OCC Night Watch 902N ★	#14940663	\$20	\$35
OCC Heifer Bull 632H ★	#20313543	\$25	\$40
OCC Rear End 751R	#15649977	Call	\$40
OCC Big Time 746Z	#17696450	\$20	\$35
OCC Thumper 819T	#16293203	\$20	\$30
OCC Anchor 771A	#11684971	Call	\$40
OCC Unmistakable 946U	#16294218	\$30	\$40
OCC Great Plains 943G	#13092912	\$20	\$35
OCC Echelon 857E ★	#12514349	Call	\$40
OCC Realist 641R ★	#15289740	\$20	\$30
OCC No Problems 52N ★	#15659166	\$100	\$35
OCC Homer 650H ★	#13235197	Call	\$35
OCC Y-Not 388Y ★	#17695293	\$20	\$35
OCC Equal 865E ★	#19391497	\$20	\$35

★ = Calving Ease Bull

LOTS 139-202

REGISTERED ANGUS FEMALE LOTS

139-168

RED ANGUS FEMALE LOT

169

ANGUS II FEMALE LOTS

170-185

FLECKVIEH-ANGUS FEMALE LOTS

186-202



The females offered this year represent OCC's four main breed groups: registered Angus, Angus II, Fleckvieh-Angus and Red Angus. These females, including the yearling heifers, have grazed out all winter and have not received supplemental feed prior to the sale. The offering includes a mix of open yearling heifers, a group of late spring calving heifers, and a strong group of fall bred heifers. We think these females are ready to go to work and excel in any forage-based system.



OCC POLLYANNA 608N

139

Calved 03/08/25

21528337

OCC Focus 813F
OCC Practical 841P
OCC Juanada 968G

OCC Zodiac 655Z
OCC Pollyanna 678J
OCC Pollyanna 638A

Basin Rainmaker 654X
Dixie Erica of C H 1019
OCC Eureka 865E
OCC Juanada 774A
OCC Umax 820U
OCC Dixie Erica 628W
OCC Rear End 751R
OCC Pollyanna 638U

Production EPDs			
CED	BW	WW	YW
8	0.2	36	62

Maternal EPDs			\$Values
CEM	Milk	FL	\$EN
-3	15	1.18	24

The maternal excellence of Practical 841P daughters became evident 20 years ago and remains relevant today. This heifer is actually linebred to Practical through the dam of Zodiac. From the great Pollyanna cow family. Sells open.



OCC JUANADA 634N

140

Calved 03/19/25

21393074

OCC Rear End 751R
OCC Johnny Jumbo 708J
OCC Dixie Erica 607B

OCC Paxton 730P
OCC Juanada 797E
OCC Juanada 877Z

OCC Homer 650H
FCC Revolution Rose 995N
OCC Paxton 730P
OCC Dixie Erica 801M
OCC Focus 813F
OCC Blackbird 736K
OCC Jet Stream 825J
OCC Juanada 826R

Production EPDs			
CED	BW	WW	YW
8	0.7	48	78

Maternal EPDs			\$Values
CEM	Milk	FL	\$EN
3	19	1.17	21

An impressive Johnny Jumbo daughter out of a smooth-made, slick-haired Paxton daughter with great udder quality. From the cow family that produced Jet Stream 825J and Practical 841P. Sells open.



OCC DIXIE ERICA 637N

141

Calved 03/20/25

21528345

OCC Homer 650H
OCC Rear End 751R
FCC Revolution Rose 995N

OCC Wholesome 667W
OCC Dixie Erica 649G
OCC Dixie Erica 694C

OCC Focus 813F
OCC Dixie Erica 816B
OCC Joker 620J
OCC Revolution Rose 887H
OCC Practical 841P
OCC Juanada 664R
OCC Paxton 730P
OCC Dixie Erica 803X

Production EPDs			
CED	BW	WW	YW
5	1.4	48	77

Maternal EPDs			\$Values
CEM	Milk	FL	\$EN
0	20	1.15	21

The Rear End daughters consistently make great cows. This heifer's dam is a beautiful Wholesome daughter and her granddam, 694C, is a big-volume Paxton daughter. Sells open.



OCC POLLYANNA 648N

142

Calved 03/23/25

21528348

OCC Homer 650H
OCC Rear End 751R
FCC Revolution Rose 995N

OCC Moderator 825M
OCC Pollyanna 636B
OCC Pollyanna 683X

OCC Focus 813F
OCC Dixie Erica 816B
OCC Joker 620J
OCC Revolution Rose 887H
OCC Headliner 661H
OCC Dixie Erica 845K
OCC Remarkabull 937R
OCC Pollyanna 944H

Production EPDs			
CED	BW	WW	YW
7	0.7	40	65

Maternal EPDs			\$Values
CEM	Milk	FL	\$EN
7	18	1.15	24

Mating Rear End to Pollyanna 636B has produced fantastic calves several times. This heifer is no exception. A full sister sells as Lot 166. Sells open.



OCC POLLYANNA 715N

Calved 04/08/25 21528980

OCC Homer 650H
CVC Gaucho 991G
FCC Revolution Rose 995N

OCC Definition 637D
OCC Pollyanna 769H
OCC Pollyanna 602E

OCC Focus 813F
OCC Dixie Erica 816B
OCC Joker 620J
OCC Revolution Rose 887H
OCC Zodiac 655Z
OCC Dixie Erica 821A
OCC Alpha 700A
OCC Pollyanna 961B

Production EPDs				Maternal EPDs			\$Values
CED	BW	WW	YW	CEM	Milk	FL	\$EN
10	-0.1	28	43	4	22	1.13	25

This heifer is sired by CVC Gaucho 991G, a full brother to Rear End 751R. The first Gaucho calves were born in 2025 and they are impressive. Sells open.



OCC DIXIE ERICA 726N

Calved 04/10/25 21528376

OCC Zodiac 655Z
OCC Here For Good 924H
OCC Dixie Erica 827A

OCC Great Plains 943G
OCC Dixie Erica 624E
OCC Dixie Erica 694C

OCC Umax 820U
OCC Dixie Erica 628W
OCC Paxton 730P
OCC Dixie Erica 771R
N Bar Emulation EXT
Dixie Erica of C H 1019
OCC Paxton 730P
OCC Dixie Erica 803X

Production EPDs				Maternal EPDs			\$Values
CED	BW	WW	YW	CEM	Milk	FL	\$EN
11	-0.9	40	70	3	22	1.19	18

An attractive Here For Good 924H daughter. Her Great Plains sired dam is from the great 803X cow family. Sells open.



OCC DIXIE ERICA 732N

Calved 04/12/25 21528378

OCC Backstop 888B
OCC Eureka 865E
Blackbird of R R 1204

OCC NO Problems 52N
OCC Dixie Erica 779D
OCC Dixie Erica 803Z

D H D Traveler 6807
Revolution Rose of R R 9239
PBC 707 1M F0203
Blackbird of R R 7023
OCC Focus 813F
OCC Dixie Erica 816B
OCC Eureka 865E
OCC Dixie Erica 693N

Production EPDs				Maternal EPDs			\$Values
CED	BW	WW	YW	CEM	Milk	FL	\$EN
7	0.4	37	59	-3	25	1.15	18

An outstanding Eureka daughter that features many of the great Montana foundation cows up close in her pedigree. She traces to 1204 twice and 1019 three times. Sells open.



OCC DIXIE ERICA 738N

Calved 04/16/25 21528380

OCC Emblazon 854E
OCC Jet Stream 825J
OCC Juanada 968G

OCC Zodiac 655Z
OCC Dixie Erica 727J
OCC Dixie Erica 640Y

D H D Traveler 6807
Dixie Erica of C H 1019
OCC Eureka 865E
OCC Juanada 774A
OCC Umax 820U
OCC Dixie Erica 628W
OCC Echelon 857E
OCC Dixie Erica 687W

Production EPDs				Maternal EPDs			\$Values
CED	BW	WW	YW	CEM	Milk	FL	\$EN
10	-0.8	41	67	2	20	1.12	19

Jet Stream 825J is a legendary maternal sire and we continue to use him in our program 27 years after his birth. This heifer's pedigree is stacked with maternal excellence. Sells open.



OCC POLLYANNA 801N

Calved 05/13/25 21528407

OCC Zodiac 655Z
OCC Has It All 925H
OCC Dixie Erica 827A

OCC Accolade 825A
OCC Pollyanna 771J
OCC Pollyanna 697D

OCC Umax 820U
OCC Dixie Erica 628W
OCC Paxton 730P
OCC Dixie Erica 771R
OCC Paxton 730P
OCC Dixie Erica 771R
OCC Zodiac 655Z
OCC Pollyanna 638A

Production EPDs				Maternal EPDs			\$Values
CED	BW	WW	YW	CEM	Milk	FL	\$EN
6	1.1	45	79	-2	19	1.2	11

A good Has It All 925H heifer that's linebred to Zodiac twice and Paxton four times. Her dam is a beautiful, smooth-made Accolade daughter. Sells open.



OCC POLLYANNA 9115M

Calved 11/30/24 21379752

OCC Zodiac 655Z
OCC Gonzo 663G
OCC Dixie Erica 839A

OCC Jet Stream 825J
OCC Pollyanna 873Z
OCC Pollyanna 731X

OCC Umax 820U
OCC Dixie Erica 628W
OCC Paxton 730P
OCC Dixie Erica 637S
OCC Emblazon 854E
OCC Juanada 968G
GCC Hunter 649U
OCC Pollyanna 835T

Production EPDs				Maternal EPDs			\$Values
CED	BW	WW	YW	CEM	Milk	FL	\$EN
9	0.4	36	60	1	20	1.12	23

This heifer is sired by Gonzo 663G, a full brother to Dakota 687D. Her dam is a beautiful Jet Stream daughter. A late fall-born heifer that we held over for spring breeding. Sells open.



OCC DIXIE ERICA 9118M

Calved 12/08/24 21391081

OCC Zodiac 655Z
OCC Gonzo 663G
OCC Dixie Erica 839A

OCC Deliverance 846D
OCC Dixie Erica 861H
OCC Dixie Erica 821F

OCC Umax 820U
OCC Dixie Erica 628W
OCC Paxton 730P
OCC Dixie Erica 637S
OCC Moderator 825M
OCC Blackcap 906B
OCC Echelon 857E
OCC Dixie Erica 851D

Production EPDs			
CED	BW	WW	YW
11	-0.3	32	55

Maternal EPDs			\$Values
CEM	Milk	FL	\$EN
5	17	1.12	25

Another Gonzo 663G daughter from a great cow family. A late fall-born heifer that we held over for spring breeding. Sells open.



OCC JUANADA 9119M

Calved 12/08/24 21391082

OCC Echelon 857E
OCC He's So Right 920H
OCC Dixie Erica 803X

OCC Hallmark 705H
OCC Juanada 579K
OCC Juanada 889H

D H D Traveler 6807
Dixie Erica of C H 1019
OCC Eureka 865E
OCC Dixie Erica 612H
OCC Zar 869Z
OCC Dixie Erica 699E
OCC Double Take 706D
OCC Juanada 908A

Production EPDs			
CED	BW	WW	YW
17	-3.5	24	44

Maternal EPDs			\$Values
CEM	Milk	FL	\$EN
7	21	N/A	23

A very low-birth heifer sired by He's So Right 920H, whose dam is the great 803X cow. A late fall-born heifer that we held over for spring breeding. Sells open.



OCC DIXIE ERICA 630M

Calved 03/19/24 21208901

OCC Focus 813F
OCC NO Problems 52N
OCC Dixie Erica 816B

OCC Atlas 664A
OCC Dixie Erica 9104J
OCC Dixie Erica 819Z

Basin Rainmaker 654X
Dixie Erica of C H 1019
D H D Traveler 6807
Dixie Erica of C H 1019
OCC Transformation 680T
Chloe Dixie Erica 7313
OCC Jet Stream 825J
OCC Dixie Erica 864L

Production EPDs			
CED	BW	WW	YW
17	-3.8	32	58

Maternal EPDs			\$Values
CEM	Milk	FL	\$EN
8	23	1.16	22

Sired by No Problems 52N (a full brother to Homer 650H), this heifer is in the top 1% of the breed for CED, BW, and \$EN. A spring born heifer that we purposefully held over for fall breeding. Pasture exposed to OCC Kilo 866K (AAA 21222558) from 12/7/25 to 3/1/26. Due to calve Mid-September 2026 with a heifer calf.



OCC DIXIE ERICA 656M

Calved 03/28/24 21207367

OCC Rear End 751R
OCC Johnny Jumbo 708J
OCC Dixie Erica 607B

OCC Legacy 839L
OCC Dixie Erica 630G
OCC Dixie Erica 812A

OCC Homer 650H
FCC Revolution Rose 995N
OCC Paxton 730P
OCC Dixie Erica 801M
OCC Echelon 857E
OCC Dixie Erica 960E
OCC Rear End 751R
OCC Dixie Erica 605K

Production EPDs			
CED	BW	WW	YW
4	2.3	42	71

Maternal EPDs			\$Values
CEM	Milk	FL	\$EN
4	21	1.15	21

A stout Johnny Jumbo sired heifer that traces to the 1019 cow 9 times. A spring born heifer that we purposefully held over for fall breeding. Pasture exposed to OCC Kilo 866K from 12/7/25 to 3/1/26. Due to calve Early September 2026.



OCC BLACKCAP 683M

Calved 04/04/24 21278509

OCC Focus 813F
OCC Future 635F
OCC Pollyanna 683X

OCC Deliverance 846D
OCC Blackcap 766H
OCC Blackcap 753F

Basin Rainmaker 654X
Dixie Erica of C H 1019
OCC Remarkabull 937R
OCC Pollyanna 944H
OCC Moderator 825M
OCC Blackcap 906B
OCC Zar 869Z
OCC Blackcap 658C

Production EPDs			
CED	BW	WW	YW
11	-0.3	29	56

Maternal EPDs			\$Values
CEM	Milk	FL	\$EN
8	16	1.14	26

Future 635F is a Focus 813F son that we've been using as a pasture sire. His daughters are efficient and easy fleshing. A spring born heifer that we purposefully held over for fall breeding. Pasture exposed to OCC Kilo 866K from 12/7/25 to 3/1/26. Due to calve Late September 2026 with a bull calf.



OCC DIXIE ERICA 687M

Calved 04/05/24 21216708

OCC Zodiac 655Z
OCC Here For Good 924H
OCC Dixie Erica 827A

OCC Eureka 865E
OCC Dixie Erica 633D
OCC Dixie Erica 803Y

OCC Umax 820U
OCC Dixie Erica 628W
OCC Paxton 730P
OCC Dixie Erica 771R
OCC Backstop 888B
Blackbird of RR 1204
OCC Paxton 730P
OCC Dixie Erica 605K

Production EPDs			
CED	BW	WW	YW
16	-3.6	27	47

Maternal EPDs			\$Values
CEM	Milk	FL	\$EN
5	19	1.19	22

This Here For Good 924H daughter is in the top 1% of the breed for CED, BW, and \$EN. Her dam is a very moderate and easy fleshing Eureka daughter. A spring born heifer that we purposefully held over for fall breeding. Pasture exposed to OCC Kilo 866K from 12/7/25 to 3/1/26. Due to calve Early October 2026.



OCC JUANADA 705M

Calved 04/07/24 21216711

OCC Zodiac 655Z

OCC Here To Stay 923H

OCC Dixie Erica 827A

OCC Deliverance 846D

OCC Juanada 726H

OCC Juanada 776F

OCC Umax 820U

OCC Dixie Erica 628W

OCC Paxton 730P

OCC Dixie Erica 771R

OCC Moderator 825M

OCC Blackcap 906B

OCC X-cellent 857X

OCC Juanada 801C

Production EPDs			
CED	BW	WW	YW
14	-2.3	33	58

Maternal EPDs			\$Values
CEM	Milk	FL	\$EN
6	16	N/A	24

This heifer is sired by Here To Stay 923H, another one of the Zodiac x 827A brothers. She's in the top percentiles of the breed for CED, BW, and \$EN. A spring born heifer that we purposefully held over for fall breeding. Pasture exposed to OCC Heifer Bull 632H (AAA 20313543) from 12/1/25 to 3/1/26. Due to calve Late October 2026.



OCC DIXIE ERICA 716M

Calved 04/10/24 21545862

OCC Focus 813F

OCC NO Problems 52N

OCC Dixie Erica 816B

OCC Do It All 656D

OCC Dixie Erica 696K

OCC Dixie Erica 699E

Basin Rainmaker 654X

Dixie Erica of C H 1019

D H D Traveler 6807

Dixie Erica of C H 1019

OCC Zodiac 655Z

OCC Dixie Erica 827A

OCC You're Exact 763Y

OCC Dixie Erica 609B

Production EPDs			
CED	BW	WW	YW
16	-2.9	29	53

Maternal EPDs			\$Values
CEM	Milk	FL	\$EN
6	21	1.15	24

The No Problems 52N daughters make exceptional cows. Note that this heifer's dam is sired by Do It All 656D. A spring born heifer that we purposefully held over for fall breeding. Pasture exposed to OCC Kilo 866K from 12/7/25 to 3/1/26. Due to calve Early September 2026.



OCC BLACKCAP 803M

Calved 04/26/24 21207385

OCC Zodiac 655Z

OCC Here For Good 924H

OCC Dixie Erica 827A

OCC Zodiac 655Z

OCC Blackcap 738G

OCC Blackcap 616A

OCC Umax 820U

OCC Dixie Erica 628W

OCC Paxton 730P

OCC Dixie Erica 771R

OCC Umax 820U

OCC Dixie Erica 628W

OCC Rancher 680R

OCC Blackcap 872K

Production EPDs			
CED	BW	WW	YW
6	1.2	44	76

Maternal EPDs			\$Values
CEM	Milk	FL	\$EN
-1	17	1.18	12

This Here For Good 924H is linebred to Zodiac and Paxton. A spring born heifer that we purposefully held over for fall breeding. Pasture exposed to OCC Kilo 866K from 12/7/25 to 3/1/26. Due to calve Mid-October 2026.



OCC DIXIE ERICA 807M

Calved 04/28/24 21207376

OCC Homer 650H

OCC Heifer Bull 632H

OCC Pollyanna 807F

OCC-ALC Style with Ease

OCC Dixie Erica 794K

OCC Dixie Erica 607B

OCC Focus 813F

OCC Dixie Erica 816B

OCC Zodiac 655Z

OCC Pollyanna 744Y

OCC Awakening 893A

ALC Juanada 501

OCC Paxton 730P

OCC Dixie Erica 801M

Production EPDs			
CED	BW	WW	YW
15	-2	38	66

Maternal EPDs			\$Values
CEM	Milk	FL	\$EN
6	21	1.17	19

Sired by Heifer Bull 632H, this heifer is in the top percentiles of the breed for CED, BW, and \$EN. Her dam is a maternal sister to Johnny Jumbo! A spring born heifer that we purposefully held over for fall breeding. Pasture exposed to OCC Kilo 866K from 12/7/25 to 3/1/26. Due to calve November 2026.



OCC DIXIE ERICA 863M

Calved 06/12/24 21235248

OCC Zodiac 655Z

OCC Here For Good 924H

OCC Dixie Erica 827A

OCC X-tra Easy 708X

OCC Dixie Erica 691G

OCC Dixie Erica 724E

OCC Umax 820U

OCC Dixie Erica 628W

OCC Paxton 730P

OCC Dixie Erica 771R

OCC NO Problems 52N

OCC Dixie Erica 678T

OCC Zodiac 655Z

OCC Dixie Erica 745A

Production EPDs			
CED	BW	WW	YW
10	-0.5	49	85

Maternal EPDs			\$Values
CEM	Milk	FL	\$EN
3	21	1.14	11

Another low-birth daughter of Here For Good 924H. A spring born heifer that we purposefully held over for fall breeding. Pasture exposed to OCC Kilo 866K from 12/7/25 to 3/1/26. Due to calve Mid-September 2026.



OCC DIXIE ERICA 875M

Calved 08/25/24 21544421

OCC Echelon 857E

OCC He's So Right 920H

OCC Dixie Erica 803X

ALC Dauntless 662

ALC-OCC Dixie Erica 9623

ALC Dixie Erica 147

D H D Traveler 6807

Dixie Erica of C H 1019

OCC Eureka 865E

OCC Dixie Erica 612H

OCC Homer 650H

ALC Dixie Erica 185

OCC NO Problems 52N

ALC Miss Joker 810

Production EPDs			
CED	BW	WW	YW
15	-2.5	33	55

Maternal EPDs			\$Values
CEM	Milk	FL	\$EN
7	19	N/A	24

Sired by He's So Right 920H, this heifer is in the top 2% of the breed for CED and BW and top 1% for \$EN. A.I. bred to OCC Zar 869Z on 11/27/25. Pasture exposed to OCC Kilo 866K from 12/7/25 to 3/1/26. Due to calve to Zar 869Z in Late August 2026 with a heifer calf.



OCC POLLYANNA 9121M

161

Calved 12/18/24

21379751

OCC Paxton 730P

OCC Epitome 630E

OCC Dixie Erica 730W

OCC Homer 650H

OCC Pollyanna 852D

OCC Pollyanna 820B

OCC Focus 813F

OCC Blackbird 736K

OCC Rear End 751R

OCC Dixie Erica 776M

OCC Focus 813F

OCC Dixie Erica 816B

OCC Headliner 661H

OCC Pollyanna 944H

Production EPDs			
CED	BW	WW	YW
12	-0.7	43	71

Maternal EPDs			\$Values
CEM	Milk	FL	\$EN
1	21	1.11	21

An attractive Epitome 630E daughter out of the great Pollyanna 944H cow family. A.I. bred to OCC Moderator 825M (AAA 14456398) on 12/7/25. Pasture exposed to OCC Kilo 866K from 12/15/25 to 3/1/26. Due to calve to Moderator 825M in Early September 2026.



CM MERLE 482M

162

Calved 04/03/24

21543620

OCC Paxton 730P

OCC Epitome 630E

OCC Dixie Erica 730W

OCC Echelon 857E

CM Merle 871F

CM Merle 802U

OCC Focus 813F

OCC Blackbird 736K

OCC Rear End 751R

OCC Dixie Erica 776M

D H D Traveler 6807

Dixie Erica of C H 1019

OCC Homer 650H

C M Merle 601S

Production EPDs			
CED	BW	WW	YW
15	-2.2	43	73

Maternal EPDs			\$Values
CEM	Milk	FL	\$EN
4	20	N/A	22

An Epitome 630E daughter that's in the top percentiles of the breed for CED, BW, and \$EN. Her dam is smooth-made Echelon daughter with a perfect udder. Pasture exposed to OCC Kilo 866K from 12/7/25 to 3/1/26. Due to calve Late September 2026 with a heifer calf. Consigned by Clyde Mattson.



CM PRIMROSE 14T4

163

Calved 5/8/24

21544143

OCC Zodiac 655Z

OCC Guideline 798G

OCC Juanada 827X

OCC Paxton 730P

RTR Primrose 5T0

RTR Primrose 15R5

OCC Umax 820U

OCC Dixie Erica 628W

OCC Eureka 865E

OCC Juanada 858F

OCC Focus 813F

OCC Blackbird 736K

OCC Rear End 751R

RTR Primrose 6T3

Production EPDs			
CED	BW	WW	YW
3	1.4	42	66

Maternal EPDs			\$Values
CEM	Milk	FL	\$EN
-4	18	1.16	24

This heifer's dam, 5T0, is a Paxton daughter with abundant volume, depth of flank, and fleshing ability. This heifer is almost a mirror image of her dam. Pasture exposed to OCC Kilo 866K from 12/7/25 to 3/1/26. Due to calve Mid-November 2026. Consigned by Clyde Mattson.



OCC DIXIE ERICA 639M

164

Calved 03/24/24

21207363

OCC Dakota 687D

OCC Judgement 630J

OCC Dixie Erica 803X

OCC Atlas 664A

OCC Dixie Erica 627G

OCC Dixie Erica 765E

OCC Zodiac 655Z

OCC Dixie Erica 839A

OCC Eureka 865E

OCC Dixie Erica 612H

OCC Transformation 680T

Chloe Dixie Erica 7313

OCC Wholesome 667W

OCC Dixie Erica 640Y

Production EPDs			
CED	BW	WW	YW
11	-0.2	42	65

Maternal EPDs			\$Values
CEM	Milk	FL	\$EN
0	18	1.13	22

This heifer is sired by Judgement 630J, a thick and smooth Dakota son out of the 803X cow that we've been using as a pasture sire. Her dam is a top producing Atlas daughter. Due to calve Late April 2026 to OCC Heifer Bull 632H (AAA 20313543).



OCC DIXIE ERICA 652M

165

Calved 03/28/24

21207366

OCC Big Time 746Z

OCC Confidence 820C

OCC Dixie Erica 628W

OCC Great Plains 943G

OCC Dixie Erica 673F

OCC Dixie Erica 812A

OCC Rear End 751R

OCC Dixie Erica 771R

OCC Practical 841P

Chloe Dixie Erica 7313

N Bar Emulation EXT

Dixie Erica of C H 1019

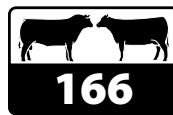
OCC Rear End 751R

OCC Dixie Erica 605K

Production EPDs			
CED	BW	WW	YW
8	-0.5	31	54

Maternal EPDs			\$Values
CEM	Milk	FL	\$EN
6	20	1.14	22

A low-birth Confidence 820C daughter from a great cow family. Her dam is an outstanding Great Plains daughter. Due to calve Mid to Late April 2026 to OCC Heifer Bull 632H.



OCC POLLYANNA 671M

166

Calved 03/31/24

21207372

OCC Homer 650H

OCC Rear End 751R

FCC Revolution Rose 995N

OCC Moderator 825M

OCC Pollyanna 636B

OCC Pollyanna 683X

OCC Focus 813F

OCC Dixie Erica 816B

OCC Joker 620J

OCC Revolution Rose 887H

OCC Headliner 661H

OCC Dixie Erica 845K

OCC Remarkabull 937R

OCC Pollyanna 944H

Production EPDs			
CED	BW	WW	YW
6	1.5	44	71

Maternal EPDs			\$Values
CEM	Milk	FL	\$EN
6	17	1.15	24

A very powerful Rear End daughter from the great Pollyanna 944H cow family. Her dam, 636B, is now 12-years-old and calved with her 11th calf in March 2026. A full sister sells as Lot 142. Due to calve Early May 2026 to OCC Heifer Bull 632H.



OCC DIXIE ERICA 779M

Calved 04/22/24 21235237

OCC Awakening 893A
OCC-ALC Style with Ease
ALC Juanada 501

OCC Accolade 825A
OCC Dixie Erica 811J
OCC Dixie Erica 724E

OCC NO Problems 52N
OCC Dixie Erica 617P
OCC X-cite 825X
A L C Dixie Erica 218
OCC Paxton 730P
OCC Dixie Erica 771R
OCC Zodiac 655Z
OCC Dixie Erica 745A

Production EPDs				Maternal EPDs			\$Values
CED	BW	WW	YW	CEM	Milk	FL	\$EN
10	0	41	69	-1	22	1.19	17

Style with Ease is a very smooth-made, easy fleshing bull that sires moderate and efficient cows. This heifer represents his daughters well. Projected to calve Early August 2026 to OCC Heifer Bull 632H (20313543).



OCC DIXIE ERICA 850M

Calved 05/31/24 21207380

OCC Zodiac 655Z
OCC Here For Good 924H
OCC Dixie Erica 827A

OCC Transformation 680T
OCC Dixie Erica 800E
OCC Dixie Erica 903B

OCC Umax 820U
OCC Dixie Erica 628W
OCC Paxton 730P
OCC Dixie Erica 771R
OCC Focus 813F
OCC Dixie Erica 603N
OCC Work of Art 766W
OCC Dixie Erica 605K

Production EPDs				Maternal EPDs			\$Values
CED	BW	WW	YW	CEM	Milk	FL	\$EN
15	-2.8	32	57	7	22	1.17	20

A low-birth Here For Good 924H daughter that was born twin to a heifer. Due to calve Early May 2026 to OCC Lifesaver 900L (AAA 21544420).



RTR HI DEE 15T4

Calved 5/22/24 4956462 Red Angus

Calvo Easy Red 126C
CM Kingston 7106K
RTR Hi Dee 37R2

Calvo Forager 57E
RTR Hi Dee 2T0
RTR Hi Dee 15R7

OCC Easy Red
BUF CRK Amy W086
PCC OH Cash Crop 4429P
RTR Hi Dee 6T9
OCC Red Grazer 610Z
SR Jessi 683A
PCC REI Super Pud 5216W
RTR Hi Dee 13R2

Production EPDs				Maternal EPDs			\$Values
CED	BW	WW	YW	CEM	Milk	HB	ProS
12	-1.7	52	82	6	23	60	96

A moderate, smooth-made Red Angus heifer from a productive cow family noted for exceptional udder quality. Due to calve Early August 2026 to the Red Angus bull OCC Keystone 983K (RAAA 4820567). Consigned by Clyde Mattson.



OCC MISS 304N

Calved 3/15/25 Angus II

OCC Homer 650H
CVC Gaucho 991G
FCC Revolution Rose 995N

OCC Little Big Man 639Z
OCC Miss 300D
OCC Flo 595R

OCC Focus 813F
OCC Dixie Erica 816B
OCC Joker 620J
OCC Revolution Rose 887H
OCC Paxton 730P
OCC Dixie Erica 605K
Troycastle Ali 2
OCC Flo 302V

This Angus II heifer is sired by CVC Gaucho 991G, a full brother to Rear End 751R. Gaucho sired his first set of calves at OCC in 2025 and they are impressive! Sells open.



OCC MISS 319N

Calved 3/24/25 Angus II

OCC Homer 650
CVC Gaucho 991G
FCC Revolution Rose 995N

OCC Eureka 482Z
OCC Miss 351D
OCC Miss 348Y

OCC Focus 813F
OCC Dixie Erica 816B
OCC Joker 620J
OCC Revolution Rose 887H
OCC Eureka 865E
OCC Miss Emblazon 512L
OCC Umax 820U
OCC Flo 597R

Another Gaucho 991G sired heifer. Her dam is a powerful granddaughter of Eureka 865E. Sells open.



OCC MISS 320N

Calved 3/24/25 Angus II

OCC Homer 650
CVC Gaucho 991G
FCC Revolution Rose 995N

OCC Epitome 630E
OCC Miss 382H
OCC Miss 311D

OCC Focus 813F
OCC Dixie Erica 816B
OCC Joker 620J
OCC Revolution Rose 887H
OCC Paxton 730P
OCC Dixie Erica 730W
OCC Paxton 730P
OCC Miss 427W

Yet another Gaucho 991G daughter! Her dam is a beautiful Epitome 630E daughter that's double bred to Paxton. Sells open.



OCC MISS 321N

Calved 3/25/25 Angus II

OCC Zodiac 655Z
OCC Here For Good 924H
OCC Dixie Erica 827A

OCC Wholesome 667W
OCC Miss 354H
OCC Miss 631E

OCC Umax 820U
OCC Dixie Erica 628W
OCC Paxton 730P
OCC Dixie Erica 771R
OCC Practical 841P
OCC Juanada 664R
OCC Echelon 857E
OCC Miss 605Y

This heifer's dam is a very productive, smooth-made, slick-haired daughter of Wholesome 667W. This heifer will be good! Sells open.

Red Angus Female

Angus II Females



OCC MISS 344N

Calved 4/3/25

Angus II

OCC Fortress 744F

OCC Just Now 788J

OCC Juanada 808C

OCC Double Impact 722D

OCC Miss 92J

OCC Miss 514H

OCC Alpha 700A

OCC Dixie Erica 752A

OCC Work of Art 766W

OCC Juanada 641Z

OCC Jet Stream 825J

OCC Dixie Erica 771R

OCC Best Yet 766B

OCC Valarie 312Y

A powerful, big-volume heifer sired by Just Now 788J. She will make a great cow. Sells open.



OCC MISS 374N

Calved 4/22/25

Angus II

OCC Homer 650H

CVC Gaucho 991G

FCC Revolution Rose 995N

OCC Extra Power 307E

OCC Miss 306J

OCC Miss 350B

OCC Focus 813F

OCC Dixie Erica 816B

OCC Joker 620J

OCC Revolution Rose 887H

OCC Paxton 730P

OCC Miss 404R

OCC You're Stout 677Y

OCC Miss Eureka 411M

An attractive Gaucho 991G daughter out of an Extra Power sired dam. Sells open.



OCC MISS 650N

Calved 3/24/25

Angus II

OCC Rear End 751R

OCC Johnny Jumbo 708J

OCC Dixie Erica 607B

OCC Wholesome 667W

OCC Miss 609F

OCC Dixie Erica 621Z

OCC Homer 650H

FCC Revolution Rose 995N

OCC Paxton 730P

OCC Dixie Erica 801M

OCC Practical 841P

OCC Juanada 664R

OCC Priority 357X

OCC Dixie Erica 662J

Wow! A powerful Johnny Jumbo daughter out of a gorgeous Wholesome sired dam. Great cow efficiency and longevity throughout her pedigree. Sells open.



OCC MISS 409M

Calved 5/24/24

Angus II

OCC Zodiac 655Z

OCC Here For Good 924H

OCC Dixie Erica 827A

OCC Accolade 825A

OCC Miss 330H

OCC Miss 389C

OCC Umax 820U

OCC Dixie Erica 628W

OCC Paxton 730P

OCC Dixie Erica 771R

OCC Paxton 730P

OCC Dixie Erica 771R

OCC Unmistakable 946U

OCC Miss 397Z

A smaller framed Here For Good 924H daughter that should make a very efficient cow. Pasture exposed to OCC Kilo 866K from 12/7/25 to 3/1/26. Due to calve Mid-September 2026 with a bull calf.



OCC MISS 350N

Calved 4/5/25

Angus II

OCC Dakota 687D

OCC Judgement 630J

OCC Dixie Erica 803X

OCC Anvil 809A

OCC Miss 347F

OCC Miss 328X

OCC Zodiac 655Z

OCC Dixie Erica 839A

OCC Eureka 865E

OCC Dixie Erica 612H

OCC Missing Link 830M

FCC Blackcap Lady 3810

OCC Transformation 680T

OCC Miss 326T

We've been impressed by the Judgement 630J calves and this heifer is a nice example. 630J is a Dakota 687D son out of the great 803X cow. Sells open.



OCC MISS 381N

Calved 4/30/25

Angus II

OCC Paxton 730P

OCC Epitome 630E

OCC Dixie Erica 730W

OCC X-tra Easy 708X

OCC Miss 307F

OCC Miss 389C

OCC Focus 813F

OCC Blackbird 736K

OCC Rear End 751R

OCC Dixie Erica 776M

OCC No Problems 52N

OCC Dixie Erica 678T

OCC Unmistakable 946U

OCC Miss 397Z

We love the Epitome 630E calves. This heifer is a nice example. Sells open.



OCC MISS 365M

Calved 4/17/24

Angus II

OCC Focus 813F

OCC Future 635F

OCC Pollyanna 683X

OCC Wholesome 667W

OCC Miss 321F

OCC Miss 322X

Basin Rainmaker 654X

Dixie Erica of C H 1019

OCC Remarkabull 937R

OCC Pollyanna 944H

OCC Practical 841P

OCC Juanada 664R

OCC Prestige 672P

OCC Miss Eureka 522N

An attractive Future 635F daughter out of a Wholesome sired dam. Pasture exposed to OCC Kilo 866K from 12/7/25 to 3/1/26. Due to calve Early to Mid-September 2026.



OCC MISS 417M

Calved 7/22/24

Angus II

OCC Awakening 893A

OCC-ALC Style with Ease

ALC Juanada 501

OCC Big Time 746Z

OCC Miss 505J

OCC Miss 311Z

OCC No Problems 52N

OCC Dixie Erica 617P

OCC X-cite 825X

ALC Dixie Erica 218

OCC Rear End 751R

OCC Dixie Erica 771R

OCC Rear End 751R

OCC Miss Eureka 522N

A Style with Ease daughter that goes back to the great 311Z cow that's sired by Rear End. Pasture exposed to OCC Kilo 866K from 12/7/25 to 3/1/26. Due to calve Late October 2026.



OCC MISS 420M

Calved 8/20/24

Angus II

OCC Atlas 664A

OCC Go Power 172G

OCC Eden 181E

OCC Deacon 615D

OCC Miss 379G

OCC Miss 387B

OCC Transformation 680T

Chloe Dixie Erica 7313

OCC X-tra Easy 708X

OCC Breeze 193B

OCC Realist 641R

OCC Blackcap 804M

OCC No Problems 52N

OCC Miss 413Z

This Go Power 172G daughter is predominately Angus II but has 1.6% Fleckvieh ancestry from her sire. Pasture exposed to OCC Kilo 866K from 12/7/25 to 3/1/26. Due to calve Late September 2026.



OCC MISS 457M

Calved 10/2/24

Angus II

OCC Atlas 664A

OCC Have It Made 125H

OCC Miss 109F

OCC Rear End 751R

OCC Miss 379D

OCC Miss 373T

OCC Transformation 680T

Chloe Dixie Erica 7313

OCC Gulf Stream 183Z

OCC Miss 106B

OCC Homer 650H

FCC Revolution Rose 995N

OCC Paxton 730P

OCC Miss Anchor 316E

A nice Have It Made 125H daughter. We included her with the Angus II heifers but note that she has 4.7% Fleckvieh ancestry from her sire. Pasture exposed to OCC Kilo 866K from 12/7/25 to 3/1/26. Due to calve Early November 2026.



OCC MISS 310M

Calved 3/23/24

Angus II

OCC Rear End 751R

OCC Johnny Jumbo 708J

OCC Dixie Erica 607B

OCC X-factor 677X

OCC Miss 446B

OCC Miss 552N

OCC Homer 650H

FCC Revolution Rose 995N

OCC Paxton 730P

OCC Dixie Erica 801M

OCC Focus 813F

OCC Dixie Erica 603N

OCC Joker 620J

OCC Valarie 399H

A stout Johnny Jumbo sired heifer out of the productive 446B cow. Due to calve Mid-May 2026 to OCC Lifesaver 900L (AAA 21544420).



OCC MISS 812M

Calved 5/1/24

Angus II

OCC Focus 813F

OCC Future 635F

OCC Pollyanna 683X

OCC Double Impact 722D

OCC Miss 662J

OCC Miss 758F

Basin Rainmaker 654X

Dixie Erica of C H 1019

OCC Remarkabull 937R

OCC Pollyanna 944H

OCC Jet Stream 825J

OCC Dixie Erica 771R

OCC Zodiac 655Z

OCC Miss 605Y

A nice Angus II heifer sired by Future 635F. Due to calve Mid-April 2026 to OCC Heifer Bull 632H (AAA 20313543).



OCC MISS 114N

Calved 3/21/25

9% Fleckvieh, 91% Angus

OCC Transformation 680T

OCC Atlas 664A

Chloe Dixie Erica 7313

OCC Exceptional Blaze 149E

OCC Miss 193L

OCC Miss 141G

OCC Focus 813F

OCC Dixie Erica 603N

Papa Forte 1921

OCC Dixie Erica 826J

OCC Anvil 809A

OCC Scarlett 111S

OCC Anvil 809A

OCC Miss Paxton 157U

An attractive Atlas 664A daughter out of a 149E sired dam. Atlas has worked extremely well in our Fleck-Angus program. Sells open.



OCC MISS 125N

Calved 3/28/25

12.5% Fleckvieh, 87.5 % Angus

OCC Jet Stream 825J

OCC Just The Thing 998J

OCC Pollyanna 638U

OCC Gulf Stream 183Z

OCC Miss 172D

OCC Yasmin 184Y

OCC Emblazon 854E

OCC Juanada 968G

OCC Great Plains 943G

OCC Pollyanna 944H

OCC Jet Stream 939W

OCC Toni 134T

OCC Realist 641R

OCC Sophie 131S

An attractive daughter of Just The Thing 998J, a Jet Stream son out of the 638U cow that we're using as a pasture service sire. Her dam is a maternal sister to the herd sire OCC Red Gem 171G. Sells open.



OCC MISS 131N

Calved 3/30/25

22% Fleckvieh, 78% Angus

OCC Anvil 809A

OCC Exceptional Blaze 149E

OCC Scarlett 111S

OCC Gulf Stream 183Z

OCC Miss 190C

OCC Miss 286Z

OCC Missing Link 830M

FCC Blackcap Lady 3810

OCC Jet Stream 825J

OCC Miss Arnold 134M

OCC Jet Stream 939W

OCC Toni 134T

OCC Normalizar 842N

OCC Miss Paxton 163W

An attractive daughter of Exceptional Blaze 149E. Her dam is a big capacity Gulf Stream daughter. Sells open.



OCC MISS 141N

Calved 4/1/25

3% Fleckvieh, 25% Red Angus, 72% Angus

OCC Awakening 893A

OCC-ALC Style with Ease

ALC Juanada 501

OCC Daylight 848E

OCC Miss 144K

OCC Miss 100H

OCC No Problems 52N

OCC Dixie Erica 617P

OCC X-cite 825X

ALC Dixie Erica 218

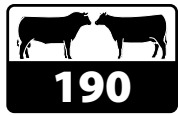
Redhill P707 Nebula 153Z

OCC Vanessa 902B

OCC Confidence 820C

OCC Miss 167D

A nice Style with Ease daughter out of dam sired by the Red Angus bull Daylight 848D. Sells open.



OCC MISS 153N

190

Calved 4/10/25 19% Fleckvieh, 81% Angus

OCC Atlas 664A
OCC Go Power 172G
OCC Eden 181E

OCC Zodiac 655Z
OCC Miss 298J
OCC Priscilla 158P

OCC Transformation 680T
Chloe Dixie Erica 7313
OCC X-tra Easy 708X
OCC Breeze 193B
OCC Umax 820U
OCC Dixie Erica 628W
OCC Jet Stream 825J
Miss Arnold E1007

The Go Power 172G daughters are making great cows. This heifer won't disappoint. Sells open.



OCC MISS 188N

191

Calved 5/4/25 4% Fleckvieh, 96% Angus

OCC Homer 650H
OCC Kilo 866K
OCC Dixie Erica 926H

OCC Go Power 172G
OCC Miss 176L
OCC Miss 135H

OCC Focus 813F
OCC Dixie Erica 816B
OCC Zodiac 655Z
OCC Dixie Erica 827A
OCC Atlas 664A
OCC Eden 181E
OCC Wholesome 667W
OCC Xara 116X

This Kilo 866K daughter has a very interesting pedigree that features Go Power 172G and the great OCC Xara 116X cow. Sells open.



OCC MISS 190N

192

Calved 5/6/25 14% Fleckvieh, 86% Angus

OCC Atlas 664A
OCC Go Power 172G
OCC Eden 181E

OCC Gulf Stream 183Z
OCC Miss 147J
OCC Miss 147Z

OCC Transformation 680T
Chloe Dixie Erica 7313
OCC X-tra Easy 708X
OCC Breeze 193B
OCC Jet Stream 939W
OCC Toni 134T
OCC Transformation 680T
Akers Miss Emblazon U100

A Go Power 172G daughter out of a young Gulf Stream 183Z sired dam. Sells open.



OCC MISS 184M

193

Calved 9/10/24 5.5% Fleckvieh, 94.5% Angus

OCC Homer 650H
OCC Zar 869Z
OCC Dixie Erica 642U

OCC Halo 614H
OCC Miss 259K
OCC Miss 184H

OCC Focus 813F
OCC Dixie Erica 816B
OCC Paxton 730P
OCC Dixie Erica 801M
OCC Alpha 700A
OCC Dixie Erica 625F
OCC Exceptional Blaze 149E
OCC Miss 283C

This low-percentage Fleck-Angus heifer is sired by Zar 869Z. A fall-born heifer that we purposefully held over for spring breeding. Sells open.



OCC MISS 134M

194

Calved 4/19/24 56% Fleckvieh, 13% HP, 31% Angus II

OCC Power Baldy 063W
OCC Guess What 162G
OCC Yolanda 181Y

Kuntz Gudas
OCC Molly 700XJ
CFFS Molly 700X

BTF 4 3119 ET
OCC Valarie 452L
OCC Wide-Body 838W
OCC Legends Naomi 126N
JNR's Salton
Kuntz Miss Moses 517C
Sunny Valley Sargent 24S
CFFS MS Molly 443T

This Guess What 162G daughter is out of a fullblood Fleckvieh dam. Her maternal granddam, CFFS Molly 700X, remains in the herd at 16 years of age. Pasture exposed to OCC Kilo 866K from 1/15/26 to 3/1/26. Due to calve Early November 2026.



OCC MISS 145M

195

Calved 4/27/24 6% Fleckvieh, 94% Angus

OCC Zodiac 655Z
OCC Here For Good 924H
OCC Dixie Erica 827A

OCC Jet Stream 825J
OCC Miss 134Z
OCC Miss 108X

OCC Umax 820U
OCC Dixie Erica 628W
OCC Paxton 730P
OCC Dixie Erica 771R
OCC Emblazon 854E
OCC Juanada 968G
OCC Transformation 680T
MFI Black Flora 7004

A low-percentage Fleck-Angus heifer sired by Here For Good 924H. A spring born heifer purposefully held over for fall breeding. Pasture exposed to OCC Kilo 866K from 12/7/25 to 3/1/26. Due to calve Late September 2026 with a bull calf.



OCC MISS 173M

196

Calved 6/20/24 4% Fleckvieh, 96% Angus

OCC Legend 616L
OCC Jump Start 861J
OCC Juanada 767G

OCC Atlas 664A
OCC Miss 111K
OCC Miss 138H

OCC Emblazon 854E
OCC Blackbird 632J
OCC Atlas 664A
OCC Juanada 877D
OCC Transformation 680T
Chloe Dixie Erica 7313
OCC Exceptional Blaze 149E
OCC Miss 107D

This heifer is sired by Jump Start 861J, a Legend 616L son, that we used as a cleanup sire on heifers. A spring born heifer purposefully held over for fall breeding. Pasture exposed to OCC Kilo 866K from 12/7/25 to 3/1/26. Due to calve Late September 2026.



OCC MISS 212M

197

Calved 3/29/24 25% Fleckvieh, 75% Angus

OCC Focus 813F
OCC Transformation 680T
OCC Dixie Erica 603N

OCC Legend 616L
OCC Miss 292K
Golden Dawn Britches

Basin Rainmaker 654X
Dixie Erica of CH 1019
OCC Joker 620J
OCC Dixie Erica 816B
OCC Emblazon 854E
OCC Blackbird 632J
TRI-T Talladega 24T
792U

This heifer's dam is a young Legend 616L daughter out of Golden Dawn Britches, the fullblood Fleckvieh cow that was a donor in our ET program. A spring born heifer purposefully held over for fall breeding. Pasture exposed to OCC Kilo 866K from 12/7/25 to 3/1/26. Due to calve Mid to Late October 2026.



OCC MISS 225M

Calved 9/17/24 25% Fleckvieh, 75% Angus

OCC Anvil 809A

OCC Exceptional Blaze 149E

OCC Scarlett 111S

OCC Gulf Stream 183Z

OCC Miss 220H

OCC Miss 265B

OCC Missing Link 830M

FCC Blackcap Lady 3810

OCC Jet Stream 825J

OCC Miss Arnold 134M

OCC Jet Stream 939W

OCC Toni 134T

OCC You Sleep 638Y

OCC Ximena 148X

An attractive black blaze-faced heifer sired by 149E. Her dam is a 183Z daughter out of a powerful cow family noted for longevity. Pasture exposed to OCC Kilo 866K from 12/7/25 to 3/1/26. Due to calve Mid-October 2026.



OCC MISS 280M

Calved 10/18/24 3% Fleckvieh, 97% Angus

OCC Alpha 700A

OCC Friendly 718F

Chloe Dixie Erica 7313

OCC Extra Power 307E

OCC Miss 197J

OCC Miss 286Z

OCC X-tra Easy 708X

OCC Dixie Erica 806Y

Papa Forte 1921

OCC Dixie Erica 826J

OCC Paxton 730P

OCC Miss 404R

OCC Normalizar 842N

OCC Miss Paxton 163W

A big-volume, deep-flanked 718F daughter from a highly proven cow family. A. I. bred to OCC Atlas 664A on 12/15/25. Pasture exposed to OCC Kilo 866K from 12/30/25 to 3/1/26. Due to calve to Atlas 664A in Mid-September 2026 with a heifer calf.



OCC MISS 135M

Calved 4/20/24 12.5% Fleckvieh, 87.5 % Angus

OCC Zodiac 655Z

OCC Here For Good 924H

OCC Dixie Erica 827A

OCC Anvil 809A

OCC Miss 156G

OCC Miss 194Y

OCC Umax 820U

OCC Dixie Erica 628W

OCC Paxton 730P

OCC Dixie Erica 771R

OCC Missing Link 830M

FCC Blackcap Lady 3810

OCC Kiddo 832K

Miss Arnold E5562

An attractive 924H daughter out of a powerful, big-volume dam. Her maternal granddam, 194Y, remains in the herd at 15 years of age and will calve with her 14th calf this spring. Due to calve Late April 2026 to OCC Lifesaver 900L (AAA 21544420).



OCC MISS 251M

Calved 9/27/24 2% Fleckvieh, 98% Angus

OCC Hunter 928H

GCC Hunter 649U

OCC Juanada 862M

OCC Accolade 825A

OCC Miss 222J

OCC Miss 190E

OCC Focus 813F

OCC Dixie Erica 960E

OCC Homer 650H

OCC Juanada 914K

OCC Paxton 730P

OCC Dixie Erica 771R

OCC Zar 869Z

OCC Miss 190C

A low-percentage Fleck-Angus heifer sired by GCC Hunter 649U. Her dam traces back to the 190C cow. Pasture exposed to OCC Kilo 866K from 12/7/25 to 3/1/26. Due to calve Early November 2026.



OCC MISS 255L

Calved 9/22/23 9% Fleckvieh, 91% Angus

OCC Mitchell 831M

OCC Remarkabull 937R

OCC Dixie Erica 801M

OCC Exceptional Blaze 149E

OCC Miss 243J

OCC Zelda 274Z

OCC Hunter 928H

OCC Erica Lassie 839J

OCC Joker 620J

OCC Dixie Erica 907C

OCC Anvil 809A

OCC Scarlett 111S

OCC Missing Link 830M

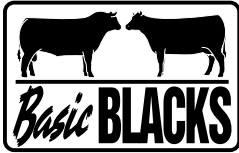
OCC Rachel 162R

The Remarkabull 937R daughters are known for excellent udder quality. Note that this heifer's dam is a 149E daughter. Pasture exposed to OCC Kilo 866K from 1/15/25 to 3/1/26. Due to calve Mid-November 2026.



OCC Dixie Erica 926H - The dam of OCC Kilo 866K. She's also a full sister to Do It All 656D, Here For Good 924H, and Has It All 925H.

Fleckvieh-Angus



Ohlde Cattle Co.
1362 2nd Road
Palmer, KS 66962

Address Service Requested

**DATED MATERIAL
FIRST CLASS**

Mail to:

**Ohlde Cattle Co.
BASIC BLACKS
BULL & FEMALE SALE
April 20, 2026 • 1 PM
Palmer, Kansas**